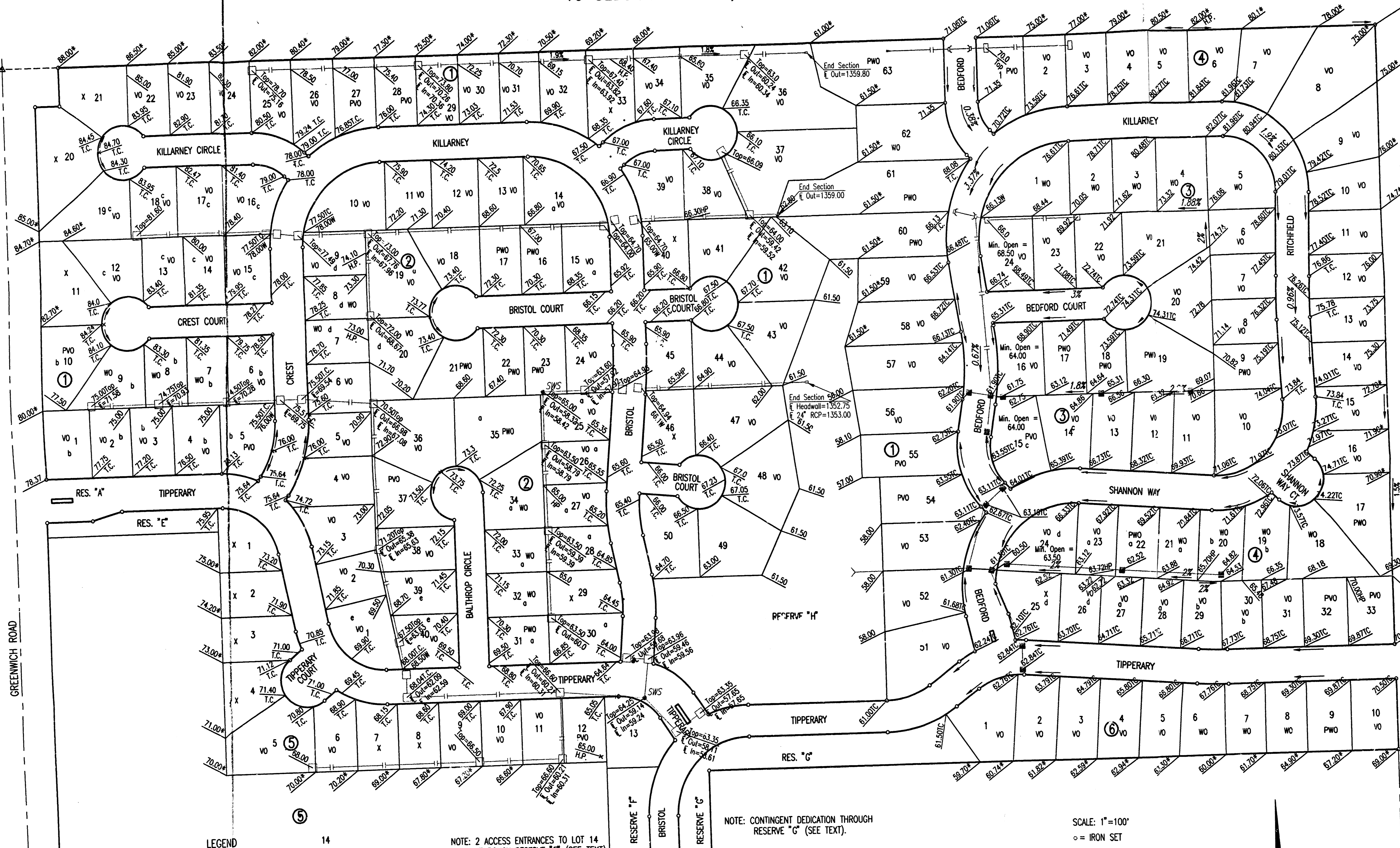


# FOUR CORNER LOT GRADING BALTHROP ADDITION TO SEDGWICK COUNTY, KANSAS

N.W. Corner S.W. 1/4  
Sec. 15, T27S, R2E  
of the 6th P.M.  
Fd. 1 I.P.

N.E. Corner S.W. 1/4  
Sec. 15, T27S, R2E  
of the 6th P.M.  
Fd. 3/4 I.P.



D:\S:\SAD\_OPEP\_SAD SCALE: 1"=100.00  
 09-12-2001 08:22:28 am  
 C:\Lot\_Gradings\Balthrop\Corner

- LEGEND**
- ELEV. ELEVATION (ADD 1300 FOR M.S.L. DATUM)
  - \* MATCH EXISTING ELEVATION
  - TC TOP OF CURB ELEVATION
  - W WALK GRADE ELEVATION
  - HP HIGH POINT
  - VO VIEW-OUT BASEMENT LOT
  - WO WALK-OUT BASEMENT LOT
  - PVO POSSIBLE VIEW-OUT BASEMENT LOT
  - PWO POSSIBLE WALK-OUT BASEMENT LOT
  - X RANCH BASEMENT LOT
  - STORM WATER SEWER
  - FLOW DIRECTION

- MINIMUM OPENINGS FOR:**
- LOTS 1-50, BLOCK 1,
  - LOTS 1-40, BLOCK 2,
  - LOTS 1-13, BLOCK 5
- a Minimum Opening for View-out or Walk-out = 1366.0
  - b Minimum Opening for View-out or Walk-out = 1377.0
  - c Minimum Opening for View-out or Walk-out = 1379.0
  - d Minimum Opening for View-out or Walk-out = 1374.0
  - e Minimum Opening for View-out or Walk-out = 1369.5

NOTE: 2 ACCESS ENTRANCES TO LOT 14 THROUGH RESERVE "F" (SEE TEXT).

SCALE: 1"=100'  
○ = IRON SET

B.M. - CHISELED "O" IN CENTER CONCRETE HEADWALL TO R.C.B. 24.5' SOUTH AND 56.7' WEST OF THE INTERSECTION OF THE CENTERLINES OF CENTRAL AND GREENWICH.  
ELEV. 188.878 CITY DATUM

**MINIMUM PAD ELEVATIONS (LOWEST OPENING) AS FOLLOWS:**

- LOTS 36-63, BLOCK 1 = ELEV. 1362.0 M.S.L.
- LOTS 14&15, BLOCK 5 = ELEV. 1362.0 M.S.L.

**APPROVED  
DRAINAGE PLAN**

- MINIMUM OPENINGS FOR:**
- LOTS 51-56, BLOCK 1,
  - LOT 10-15, BLOCK 3
  - LOTS 16-33, BLOCK 4
  - LOTS 1-10, BLOCK 6
- a MINIMUM OPENING FOR VIEW-OUT OR WALK-OUT 1364.2
  - b MINIMUM OPENING FOR VIEW-OUT OR WALK-OUT 1366.3
  - c MINIMUM OPENING FOR VIEW-OUT OR WALK-OUT 1364.0
  - d MINIMUM OPENING FOR VIEW-OUT OR WALK-OUT 1363.5
  - e MINIMUM OPENINGS FOR LOTS 51-63, BLOCK 1 = 1362.0 M.S.L.

REVISED 9-12-2001 **BALTHROP ADDN**