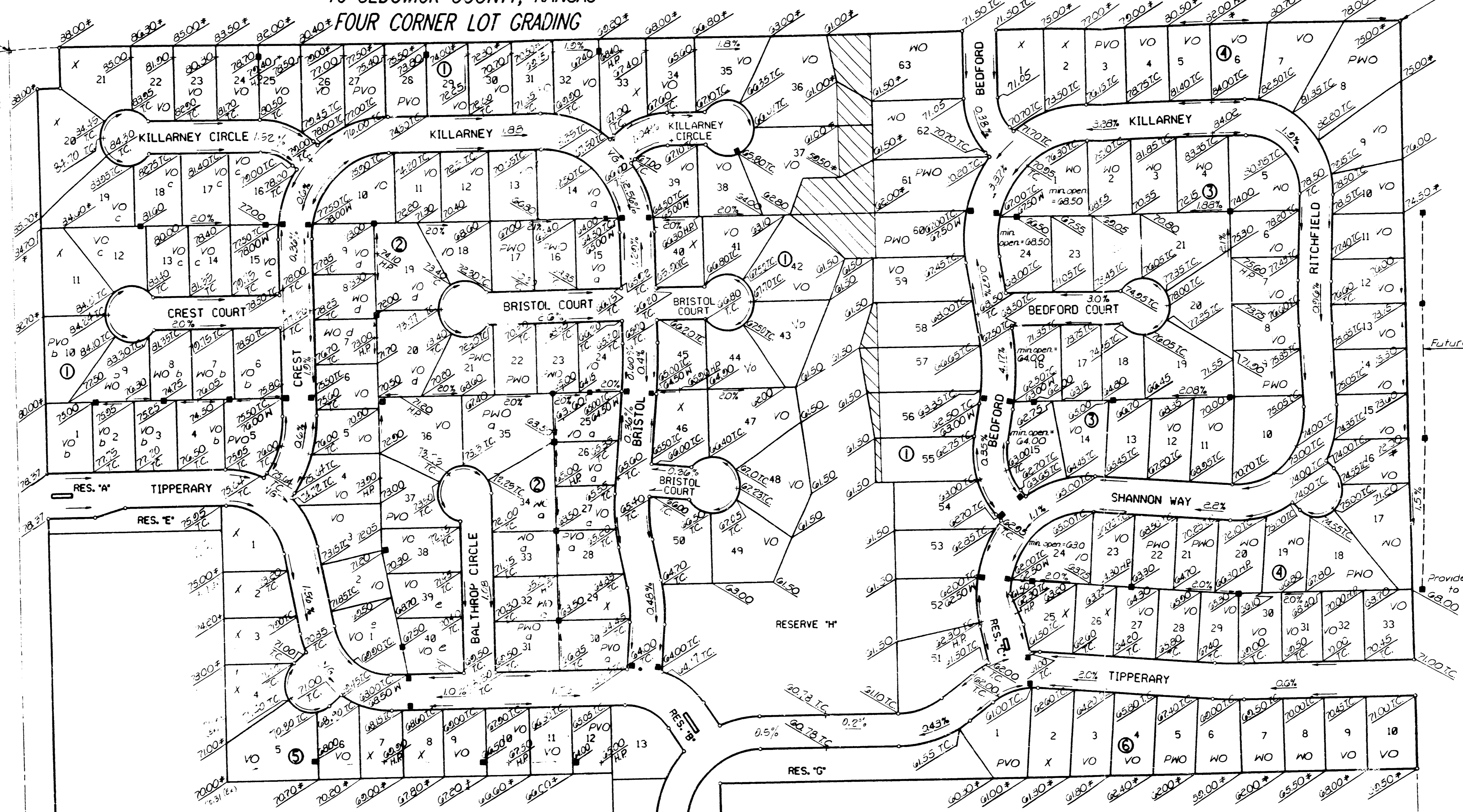


# BALTHROP ADDITION TO SEDGWICK COUNTY, KANSAS FOUR CORNER LOT GRADING

N.W. Corner, S.W. 1/4  
Sec. 15, T27S, R2E  
of the 6th P.M.  
Ed. 11.P.

N.E. Corner, S.W. 1/4  
Sec. 15, T27S, R2E  
of the 6th P.M.  
Ed. 11.P.



SCALE: 1"=20'  
= IRON SET  
BSL = BUILDING SETBACK LINE  
C.A.C. = COMPLETE ACCESS CONTROL  
REVISED 2-13-96

DRAINAGE EASEMENT

B.M. - CHISELED 17 IN CENTER CONCRETE HEADWALL TO R.C.B.  
24.5' SOUTH AND 56.7' WEST OF THE INTERSECTION OF THE  
CENTERLINES OF CENTRAL AND GREENWICH.  
ELEV. 188.828 CITY DATUM  
MINIMUM PAD ELEVATIONS (LOWEST OPENING) AS FOLLOWS:

Revised 2-13-96  
Revised 11-12-96

**APPROVED  
DRAINAGE PLAN**  
LR# 7447

- LEGEND**
- ▨ Drainage Easement
  - Elevation (Add 100 for M.S.L. Datum.)
  - # March Existing
  - X Walk Grade Elevation
  - C Top of Curb Elevation
  - +P High Point Elevation
  - VO View-out Basement allowed
  - WO Walk-out Basement allowed
  - PVO Possible View-out Basement lot
  - PWO Possible Walk-out Basement lot
  - 1 Minimum opening for View-out or Walk-out = 1356.0
  - 2 Minimum opening for View-out or Walk-out = 1377.0
  - 3 Minimum opening for View-out or Walk-out = 1379.0
  - 4 Minimum opening for View-out or Walk-out = 1374.0
  - 5 Minimum opening for View-out or Walk-out = 1368.5
  - 6 Minimum opening for Lots 35 thru 33 Block = 1352.5
  - 7 Minimum opening for Lots 14 & 15 Block = 1352.0

**BALTHROP  
ADDITION**  
(STRATLED IN COUNTY  
ANNEXED FEB '98)

Plot Area marked 31/10/1978 250