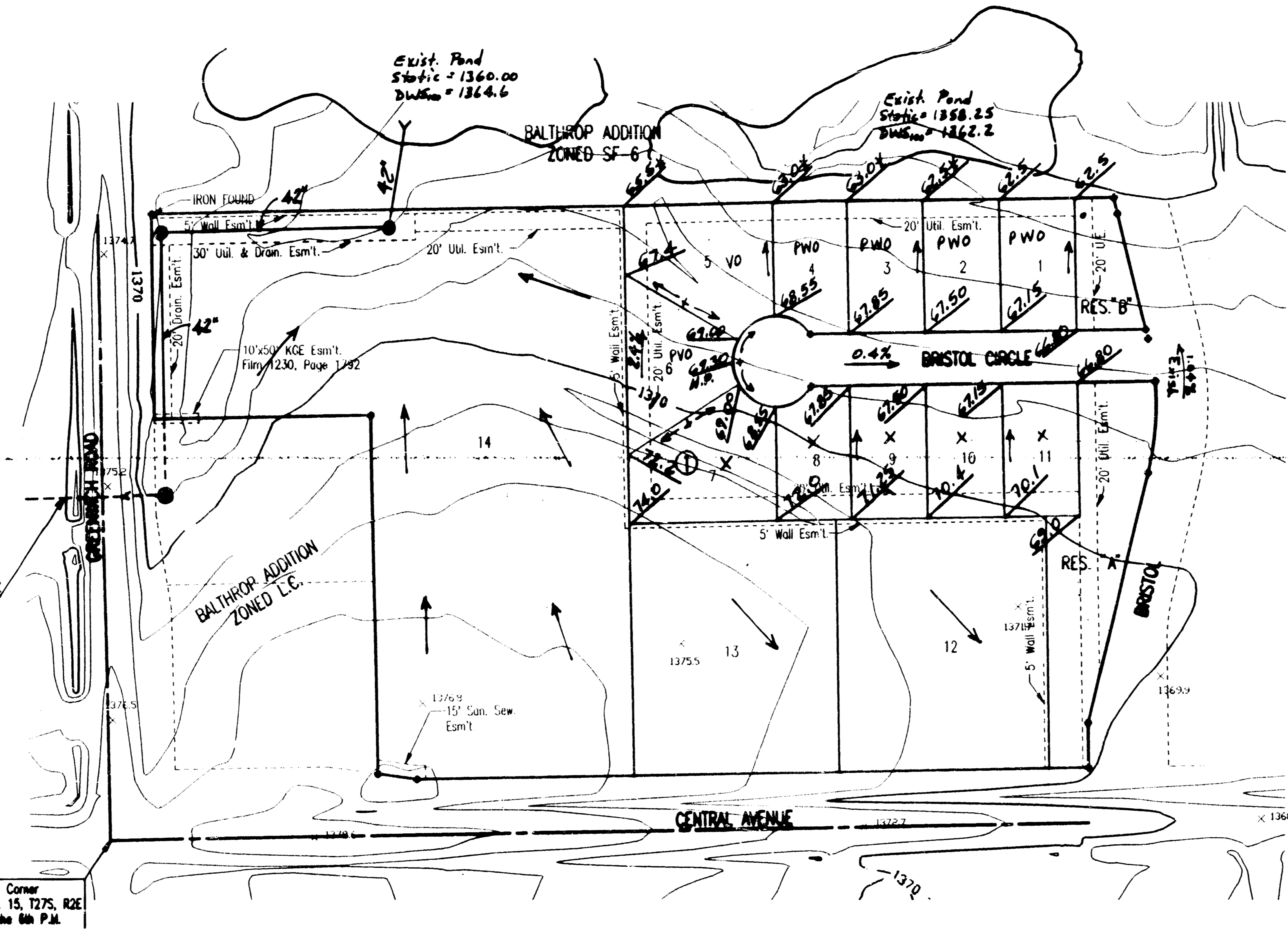


DRAINAGE PLAN
BALTHROP 2ND ADDITION
 TO WICHITA, SEDGWICK COUNTY, KANSAS

1. Reference Balthrop Addition Drainage Plan for hydrology and hydraulic computations.
2. Lots 12 & 13 shall drain to Central Ave. or Bristol Street via storm sewers, flumes, sheet flow, ditches, or other approved drainage measure.
3. Lot 14 shall be drained to proposed 42" SWS and inlets.
4. Commercial properties will not be permitted to drain across residential lots.

Exist. 36" x 66" C.M.W.
 D.A. = 29 Ac.
 Q_{max} = 70 cfs

S.W. Corner
 Sec. 15, T27S, R2E
 of the 6th P.M.



SCALE: 1"=100'
 • = IRON SET
 B.S.L. = BUILDING SETBACK LINE
 C.A.C. = COMPLETE ACCESS CONTROL
 B.M. - CHISELED "I" IN CENTER CONCRETE HEADWALL TO RCB
 24.5' SOUTH AND 56.7' WEST OF THE INTERSECTION
 OF THE CENTERLINES OF CENTRAL AND GREENWICH
 ELEV.=188.828 CITY DATUM

LEGEND

- 10.1 - 4-Corner Lot Elevation (AVID 1300 FOR MERRIS SEA LEVEL)
- - Flow Direction
- - SWS MH or Inlet
- Min. Pad for Lot 14 = 1366.0
- Min. Pad for Lots 1-5 = 1364.0
- X Ranch Bsm't Lot
- VO View-Out Bsm't Lot
- PVO Possible View-Out Bsm't Lot
- PWO Possible Walk-Out Bsm't Lot

**BALTHROP
 2ND ADDITION**

12/23/98
 PLAT CARD UNKOPD 23 DEC 198

CSMS, INC. OFFER DEP. SCALE: 1"=100.00
 2.11971700A UNKOPD PLAN 02-13-1998 08:55:09 AM