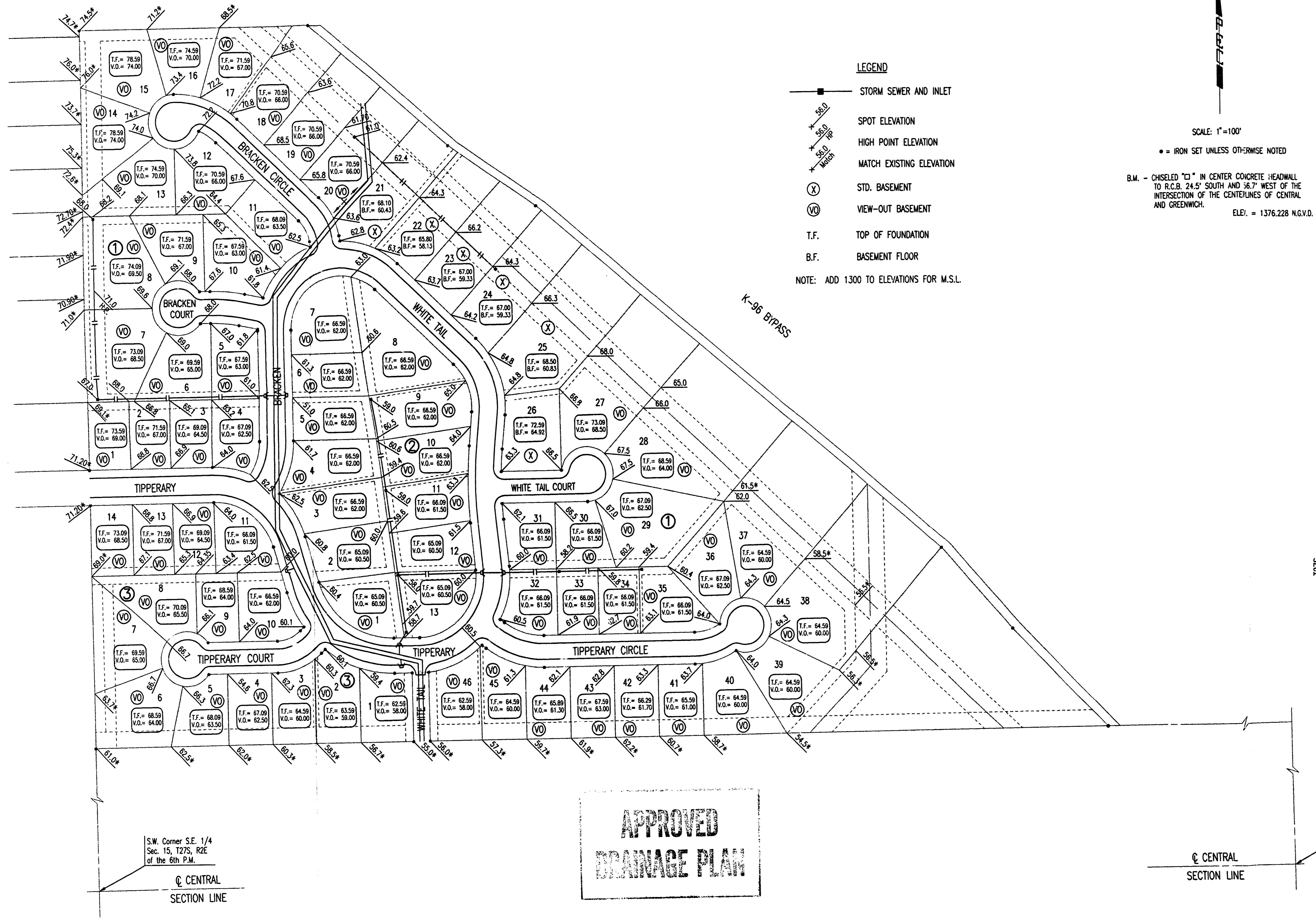
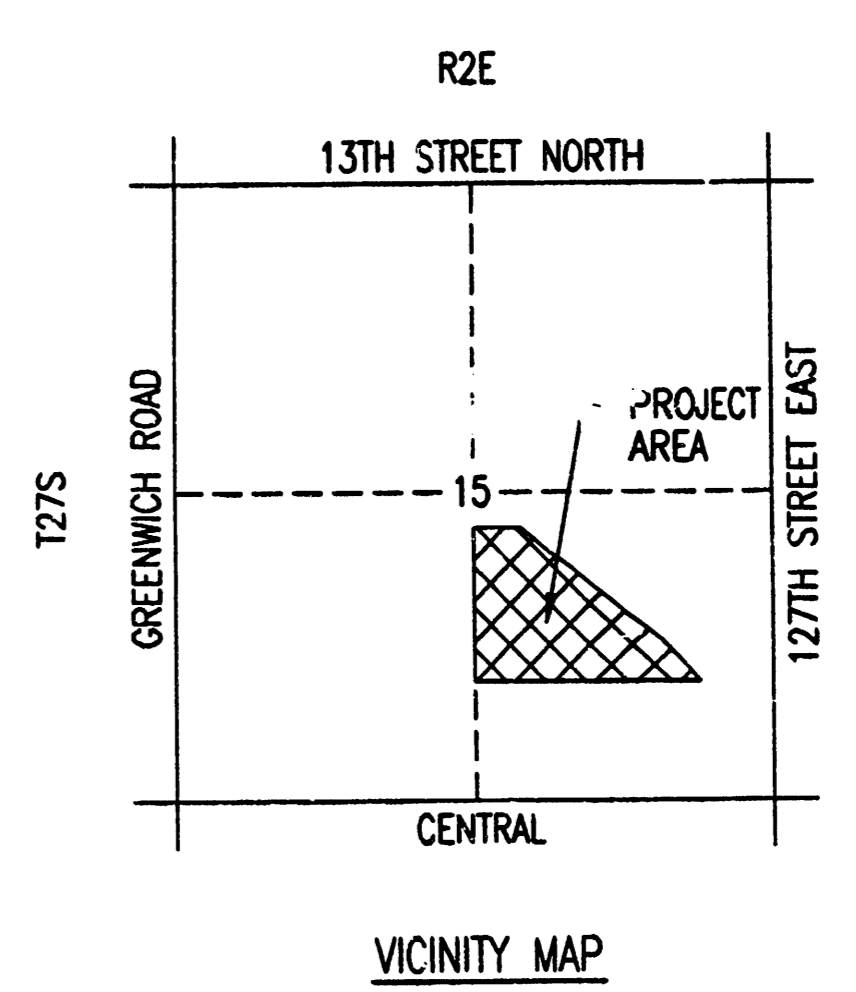


FOUR-CORNER PLAN/MASTER DRAINAGE PLAN
BALTHROP 4TH ADDITION
 TO WICHITA, SEDGWICK COUNTY, KANSAS



- LEGEND**
- STORM SEWER AND INLET
 - x 85.0
x 85.0
x 85.0 SPOT ELEVATION
 - + 85.0 HIGH POINT ELEVATION
 - 85.0 MATCH EXISTING ELEVATION
 - (X) STD. BASEMENT
 - (VO) VIEW-OUT BASEMENT
 - T.F. TOP OF FOUNDATION
 - B.F. BASEMENT FLOOR
- NOTE: ADD 1300 TO ELEVATIONS FOR M.S.L.

SCALE: 1"=100'
 • = IRON SET UNLESS OTHERWISE NOTED
 B.M. - CHISELED "C" IN CENTER CONCRETE HEADWALL TO R.C.B. 24.5' SOUTH AND 36.7' WEST OF THE INTERSECTION OF THE CENTERLINES OF CENTRAL AND GREENWICH. ELEV. = 1376.228 N.G.V.D.



**APPROVED
 DRAINAGE PLAN**

S.W. Corner S.E. 1/4
 Sec. 15, T27S, R2E
 of the 6th P.M.

© CENTRAL
 SECTION LINE

© CENTRAL
 SECTION LINE

S.E. Corner S.E. 1/4,
 Sec. 15, T27S, R2E
 of the 6th P.M.

BALTHROP 4th

DSNR: SAD OPER: SAD SCALE: 1"=100.00
 0:1995/09624/Balthrop 4th.dwg 4/03/02 02:55:49 pm