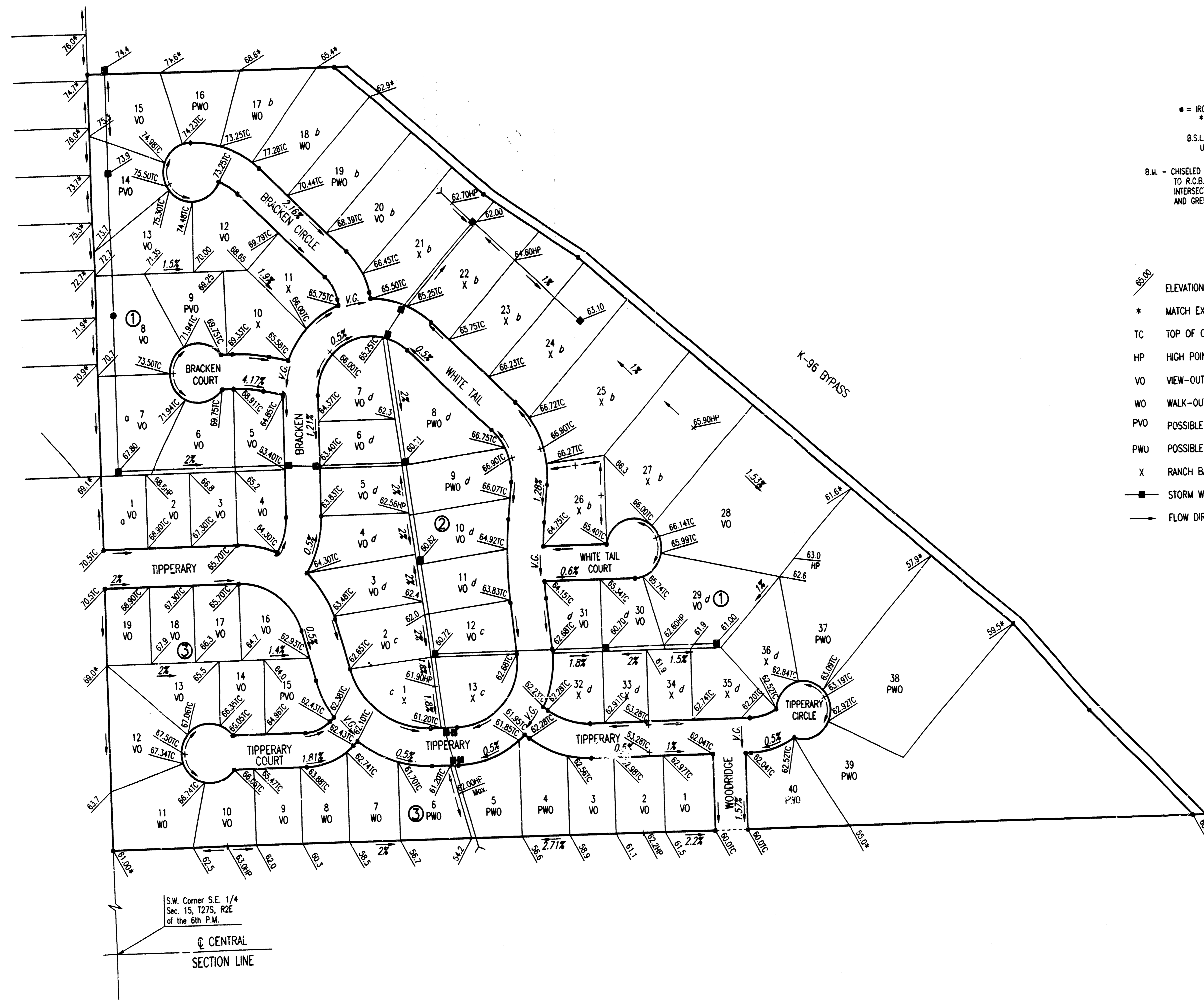


FOUR CORNER LOT GRADING PLAN  
 BALTHROP 4TH ADDITION  
 TO WICHITA, SEDGWICK COUNTY, KANSAS



SCALE: 1"=100'

● = IRON SET UNLESS OTHERWISE NOTED  
 \* = EXAGGERATED SCALE

B.S.L. = BUILDING SETBACK LINE  
 U.E. = UTILITY EASEMENT

B.M. - CHISELED "10" IN CENTER CONCRETE HEADWALL  
 TO R.C.B. 24.5' SOUTH AND 56.7' WEST OF THE  
 INTERSECTION OF THE CENTERLINES OF CENTRAL  
 AND GREENWICH. ELEV.=1376.228 M.S.L.

LEGEND

- 88.00' ELEVATION (ADD 1300 FOR M.S.L. DATUM)
- \* MATCH EXISTING ELEVATION
- TC TOP OF CURB ELEVATION
- HP HIGH POINT
- VO VIEW-OUT BASEMENT LOT
- WO WALK-OUT BASEMENT LOT
- PVO POSSIBLE VIEW-OUT BASEMENT LOT
- PWU POSSIBLE WALK-OUT BASEMENT LOT
- X RANCH BASEMENT LOT
- STORM WATER SEWER
- FLOW DIRECTION

Minimum Pad Elevations (Lowest Openings)

- a = 1370.0 M.S.L.
- b = 1367.5 M.S.L.
- c = 1363.5 M.S.L.
- d = 1364.0 M.S.L.

S.W. Corner S.E. 1/4  
 Sec. 15, T27S, R2E  
 of the 6th P.M.  
 CENTRAL  
 SECTION LINE

BALTHROP 4<sup>TH</sup> ADDN  
 APPROVED  
 DRAINAGE PLAN

DSNR: KER OPER: KER SCALE: 1"=100.00  
 02/19/99 1996/24 (Cent Addition) (Drg) (CORNER 10-18-1999 02:16:20 pm)

10-18-99 KER