

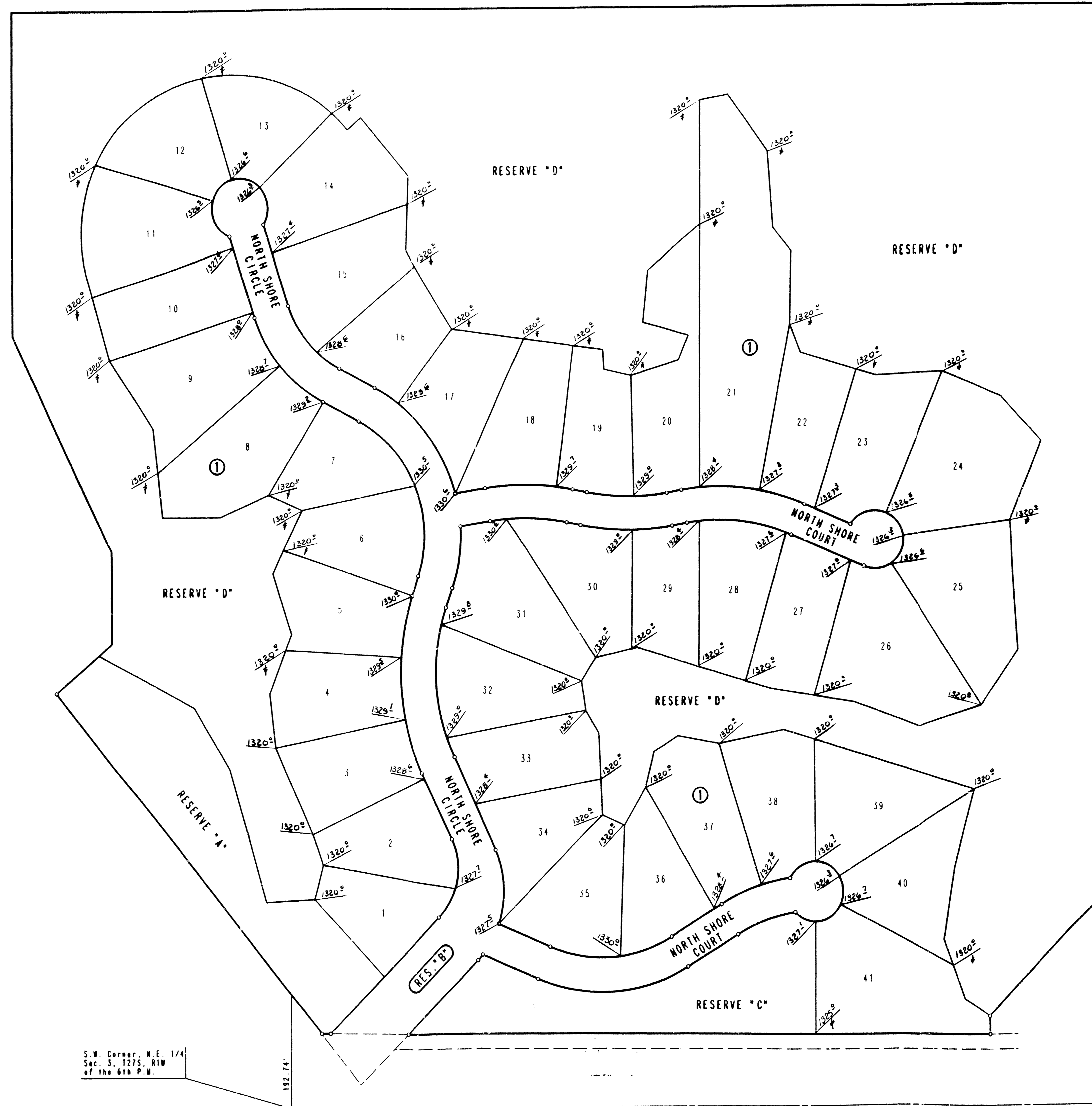
FOUR CORNER LOT GRADING
 BAREFOOT BAY
 AN ADDITION TO WICHITA,
 SEDGWICK COUNTY, KANSAS



SCALE: 1" = 100'
 O - IRON SET

B.M. - HOOVER AND 21ST STREET NORTH
 CITY OF WICHITA BENCH MARK DISC.
 30 FEET NORTH AND 37 FEET EAST OF
 THE INTERSECTION OF THE CENTERLINE
 OF BOTH. ELEV. +139.991 CITY DATUM

≠ - MATCH EXISTING GROUND



S.W. Corner, N.E. 1/4
 Sec. 3, T27S, R1W
 of the 6th P.M.

BAREFOOT BAY
 GRADING PLAN

**APPROVED
 DRAINAGE PLAN**