

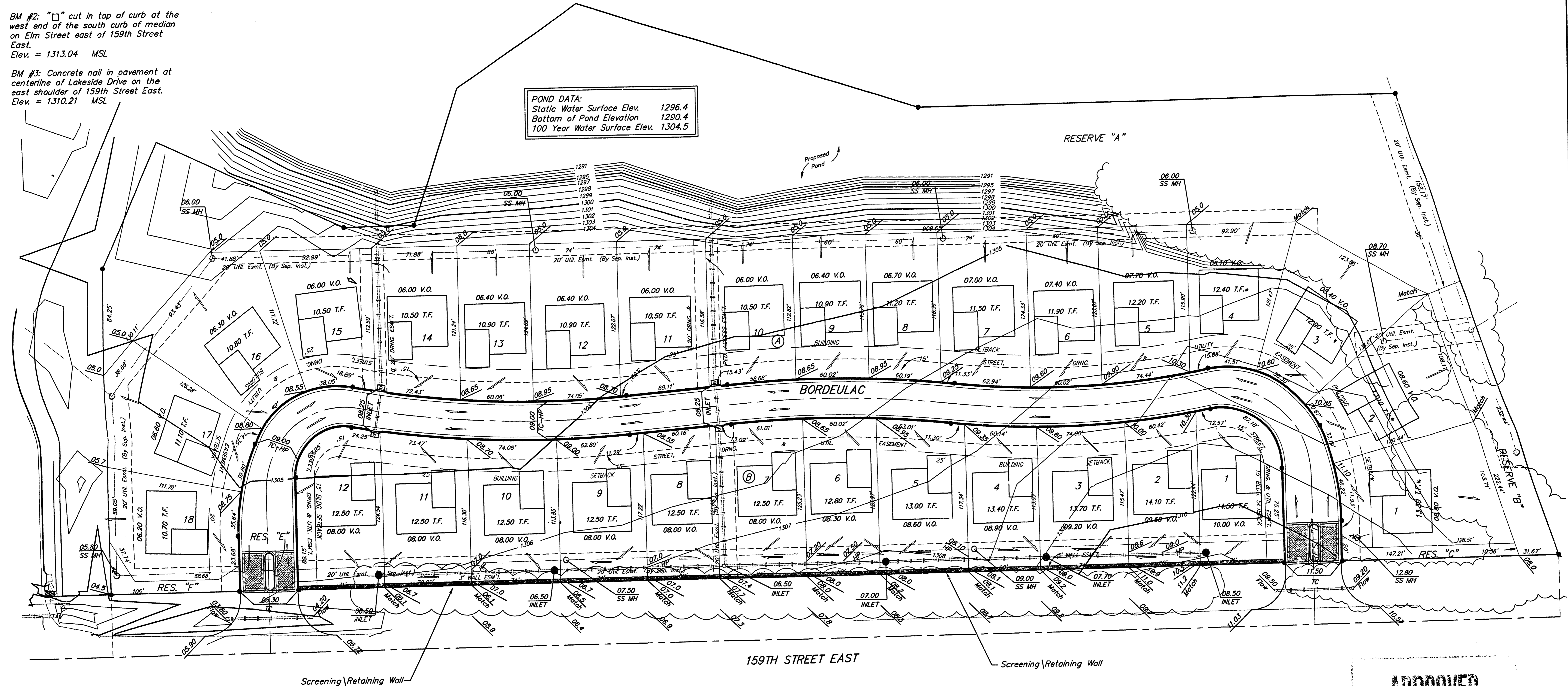
**BENCHMARK:**  
 BM #1: RR spike in PP east of 159th Street East, south of SE corner of Belriv Addition, Elev. = 1304.55 MSL

BM #2: "□" cut in top of curb at the west end of the south curb of median on Elm Street east of 159th Street East. Elev. = 1313.04 MSL

BM #3: Concrete nail in pavement at centerline of Lakeside Drive on the east shoulder of 159th Street East. Elev. = 1310.21 MSL

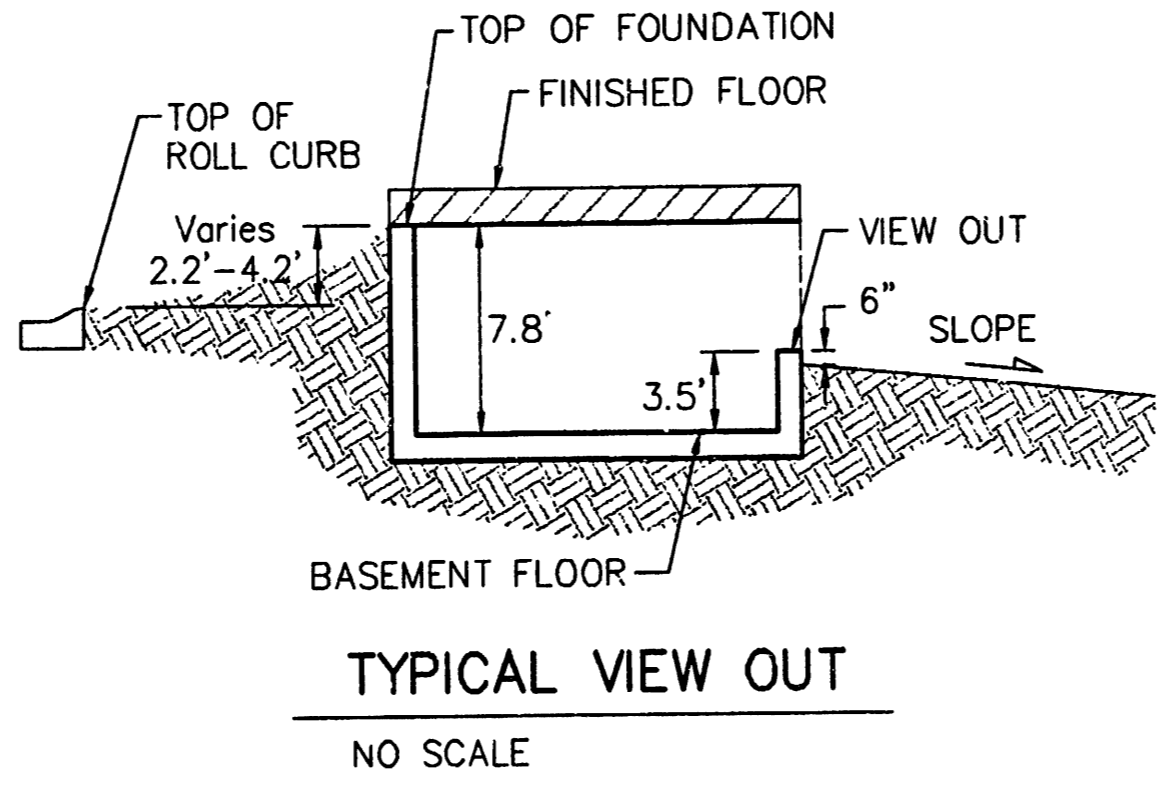
Scale: 1" = 40'  
 • = Iron

**POND DATA:**  
 Static Water Surface Elev. 1296.4  
 Bottom of Pond Elevation 1280.4  
 100 Year Water Surface Elev. 1304.5



MINIMUM BUILDING PAD ELEVATIONS FOR LOWEST OPENING TO THE STRUCTURES

LOT	BLOCK	ELEVATION
1,2,3	A	1307
4-17	A	1306



**NOTE:**  
 Proposed top of foundation and minimum view-out elevations are shown on plans. Contractor to set finish floor elevation.

All street elevations shown on plans are for top of curb (full height).

View-out elevations are denoted as XXX.X V.O.

\* Extra deep foundations may be required on Lots 1-4, Block A.

**APPROVED DRAINAGE PLAN**

Revised 12/30/99 by TMG per BLP  
 Revised 12/29/99 by TMG per NBW

**BELRIV ADDITION**  
**GRADING PLAN**  
 SEDGWICK COUNTY, KANSAS

**BAUGHMAN COMPANY P.A.**  
 ENGINEERING, SURVEYING, & PLANNING  
 316-262-7271 • 315 ELLIS • WICHITA, KANSAS 67211

PROJECT NUMBER: \_\_\_\_\_ SHEET: \_\_\_\_\_ OF \_\_\_\_\_

DESIGN: BP DRAWN: TMG APPROVED: \_\_\_\_\_ DATE: 10-99 SCALE: 1"=40'

Belriv Grading