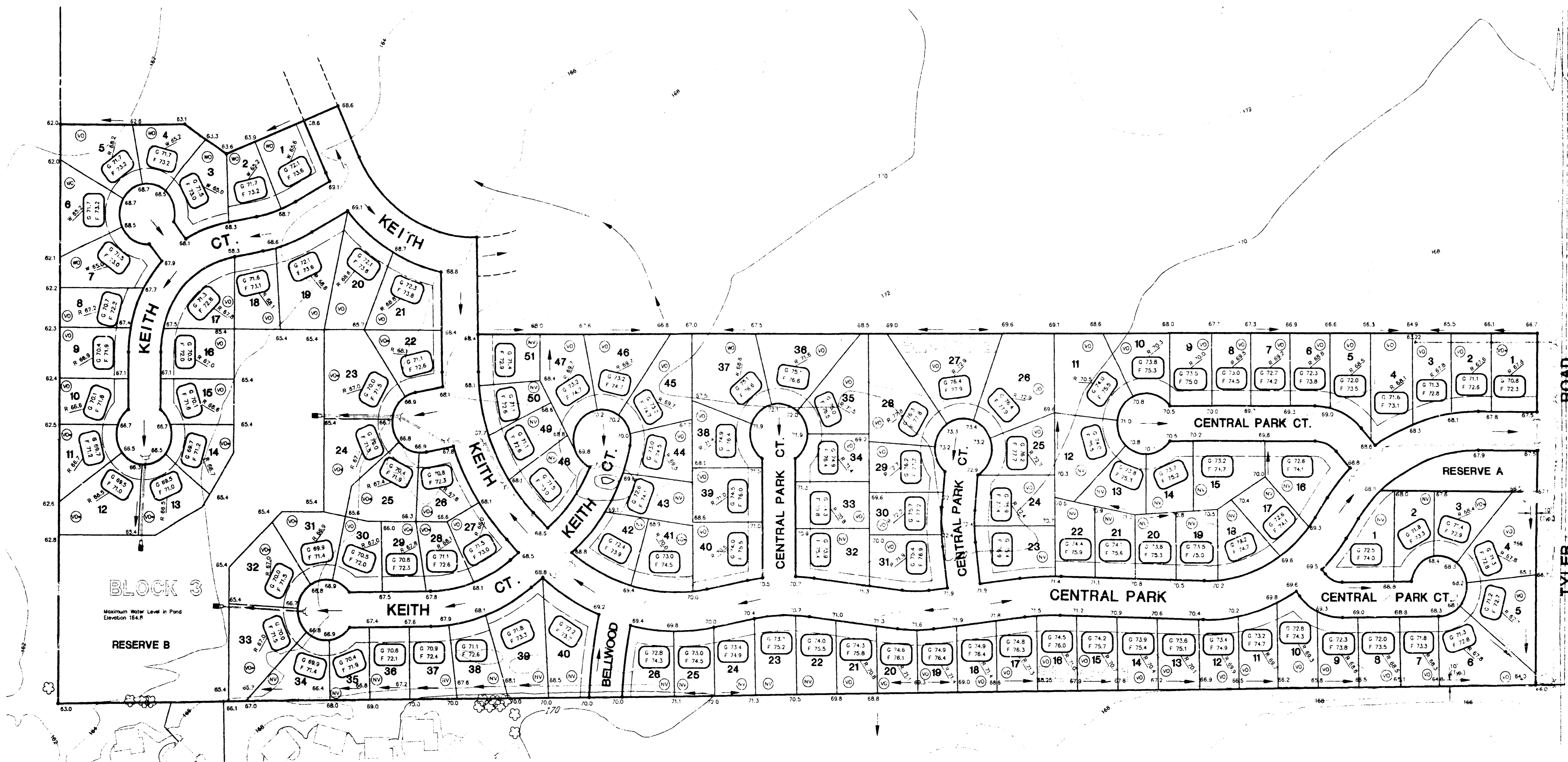


LEGEND

- Top of Rear Wall (Viewout Basement)
- Garage Floor
- Top of Foundation
- Top of Rear Wall (Walkout Basement)
- Viewout Basement (3' High Rear Wall)
- Viewout Basement (3.5' High Rear Wall)
- No Viewout
- Walkout Basement
- Basement

Scale: 1" = 100'



LOT GRADING PLAN BRADFORD SOUTH

AN ADDITION TO WICHITA, SEDGWICK COUNTY, KANSAS

BRADFORD SOUTH

POE & ASSOCIATES OF KANSAS, INC.

Consulting Engineers
434 N. Oliver, Suite 110 ■ Wichita, KS 67208 ■ 316/685-4114

DATE: July 19, 1994
Rev. August 31, 1995

**APPROVED
DRAINAGE PLAN**