

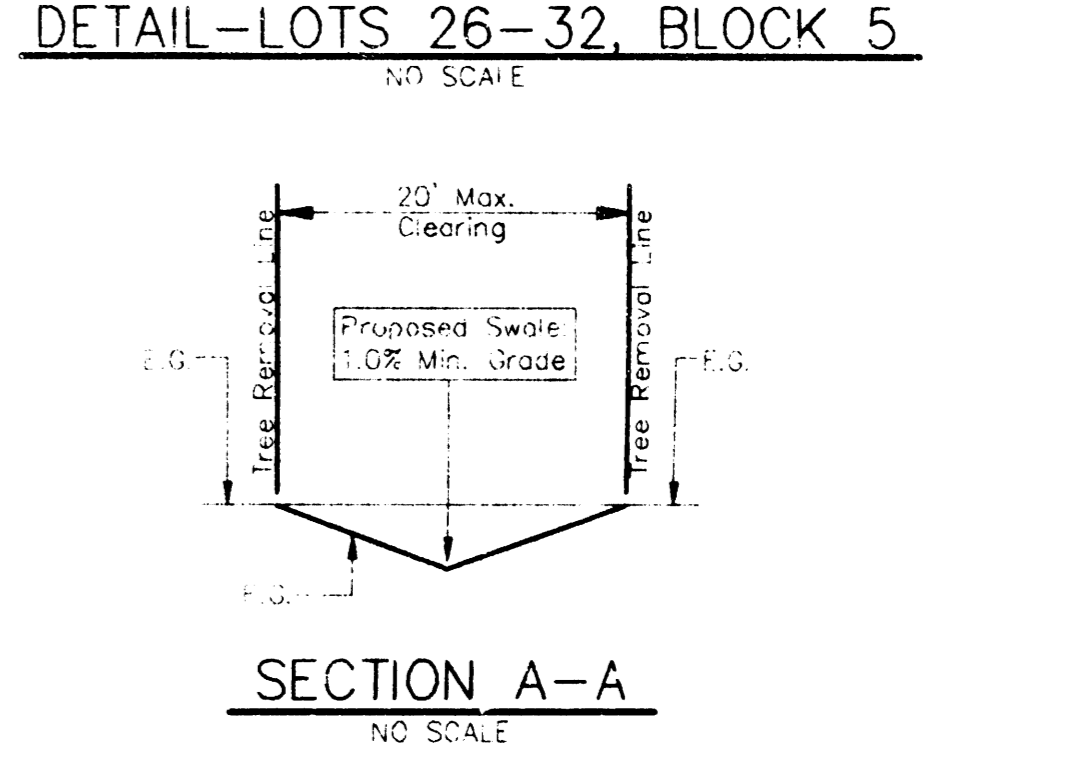
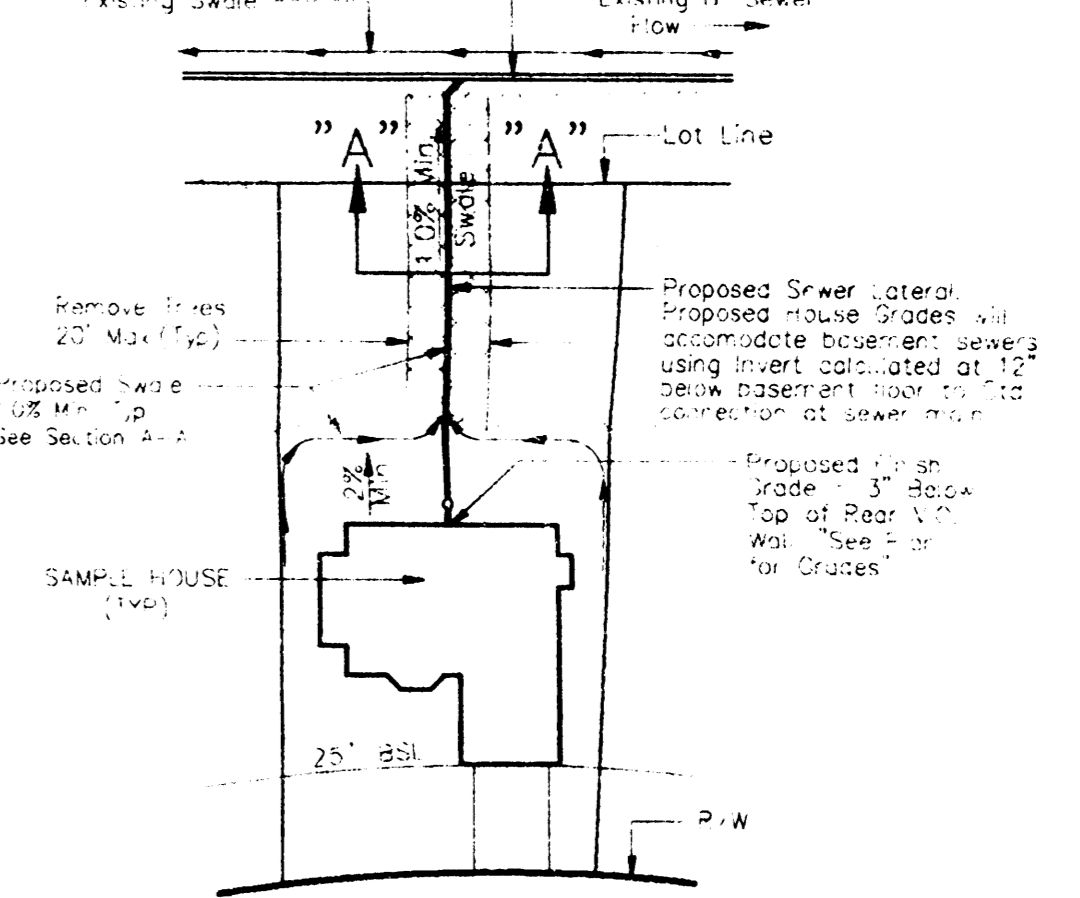
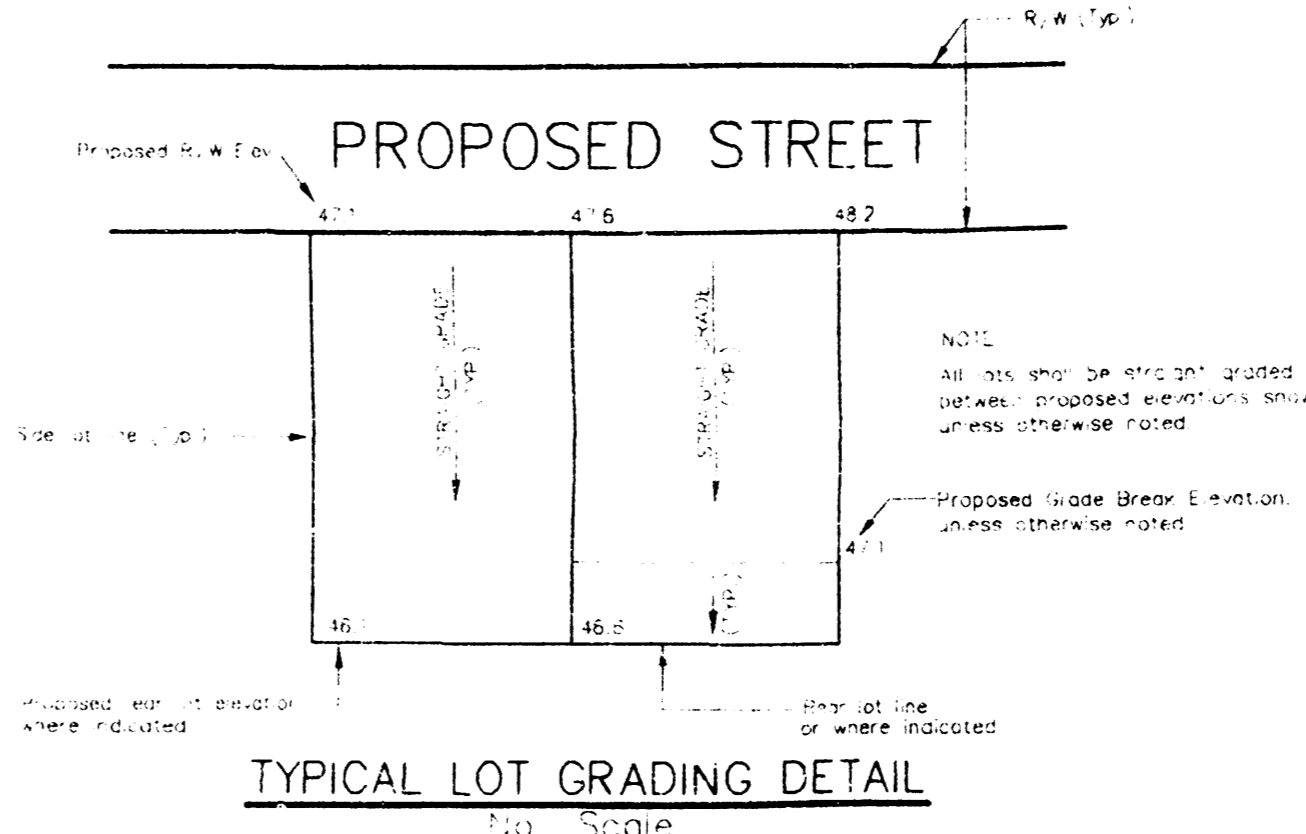
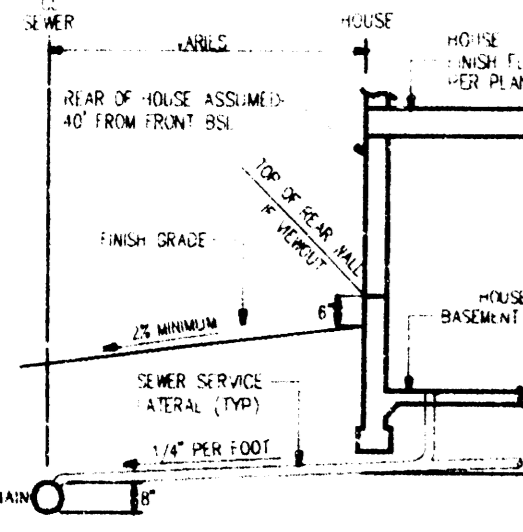
LOT GRADING PLAN BRADFORD NORTH

AN ADDITION TO WICHITA, SEDGWICK COUNTY, KANSAS

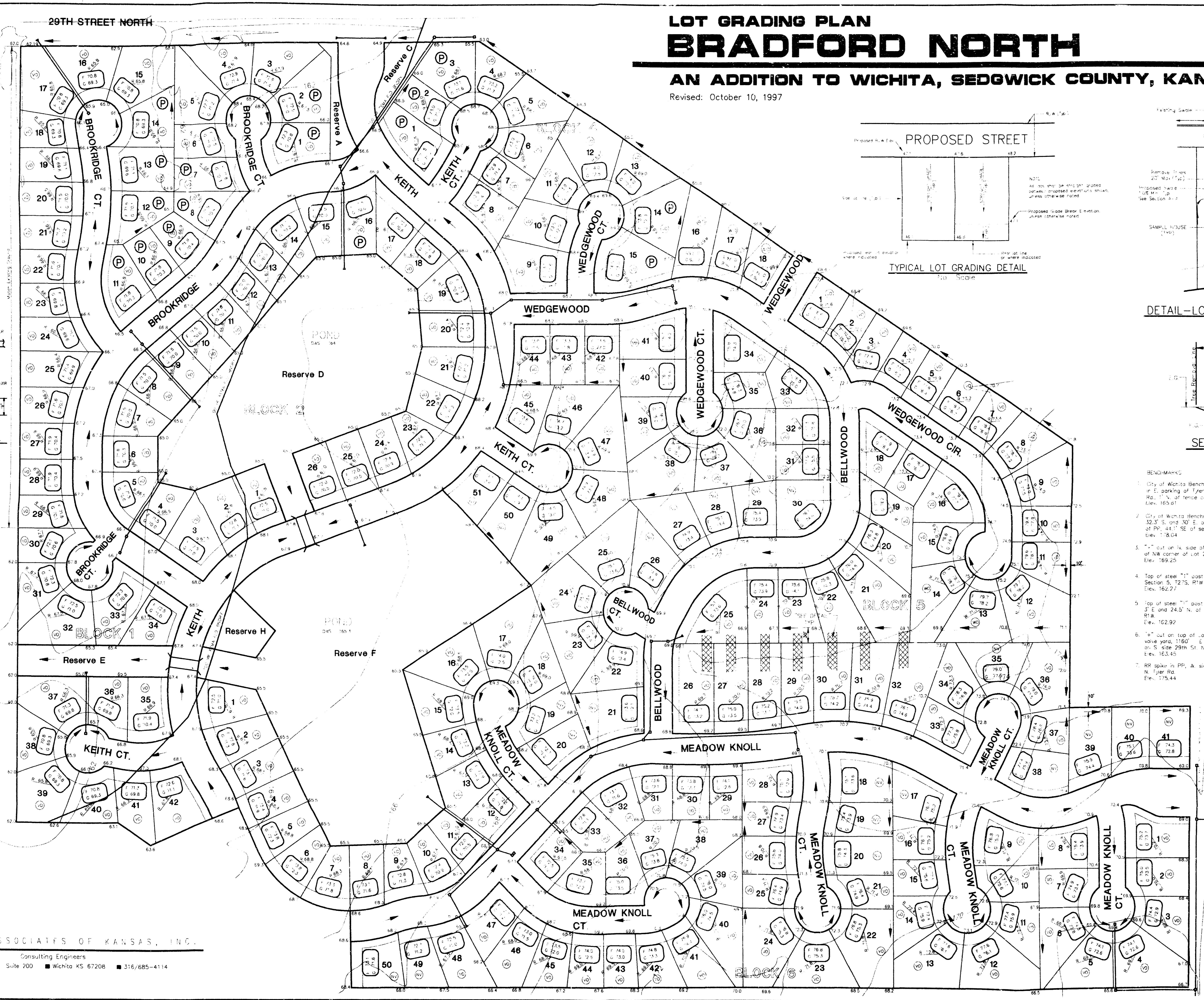
Revised: October 10, 1997

LEGEND

- Top of Rear Apron (W/leakout Basement)
- Top of Foundation (Storage Room)
- Top of Rear Apron (No-leakout Basement)
- W/leakout Basement (3.0' max. clear. W/leakout)
- W/leakout Basement (3.0' max. clear. W/leakout)
- No-leakout
- W/leakout Basement
- Sewer Pump Required to serve Basement (utilizing criteria shown in Detail below)



- BENCHMARKS**
1. City of Wichita Benchmark disc @ Tyler Rd. and 28th St. N. in E. parking of Tyler Rd. 3.3' W. of Iron on E. S.W. of Tyler Rd. 1/4" S. of fence corner E. & S. (from Dean Krug C.O.D.) Elev. 163.61
 2. City of Wichita Benchmark disc @ Tyler Rd. and 29th St. N. 12.8' S. and 100' E. of centerline beam, 55.5' E. of PP, 3.2' SE of PP, 44.1' SE of section corner. (from Dean Krug C.O.D.) Elev. 178.04
 3. 7" cut on N. side of Manhole 15' S. and 5' E. of SW corner of Lot 23 Block 1, Sterling Farms 2nd Addition. Elev. 169.25
 4. Top of steel "T" post set 1' below ground, 10' N. of center Section 5, 12/25, RTW. Elev. 162.27
 5. Top of steel "T" post set 5' below ground, 2' E. of N-S Fence 3' E. and 24.5' N. of W-1/4 Corner of NE Cor. Sec. 5, 12/25, RTW. Elev. 162.97
 6. 7" cut on top of curb headwork at entrance to 1/4" manhole yard, 176' E. of N 1/4 Cor. Sec. 5, 12/25, RTW, on on S. side 29th St. N. Elev. 163.45
 7. RR spike in PP, A side Tyler Rd., on N. side entrance to 2759 W. Tyler Rd. Elev. 175.44



Scale: 1" = 100'

POC & ASSOCIATES OF KANSAS, INC.
Consulting Engineers
5940 E. Central Suite 200 ■ Wichita KS 67208 ■ 316/685-4114

APPROVED
PLANNING PLAN

VRH 10/14/97

BRADFORD NORTH ADD'N

10-22-97

→ Revised

Sheet No. 1 of 1