

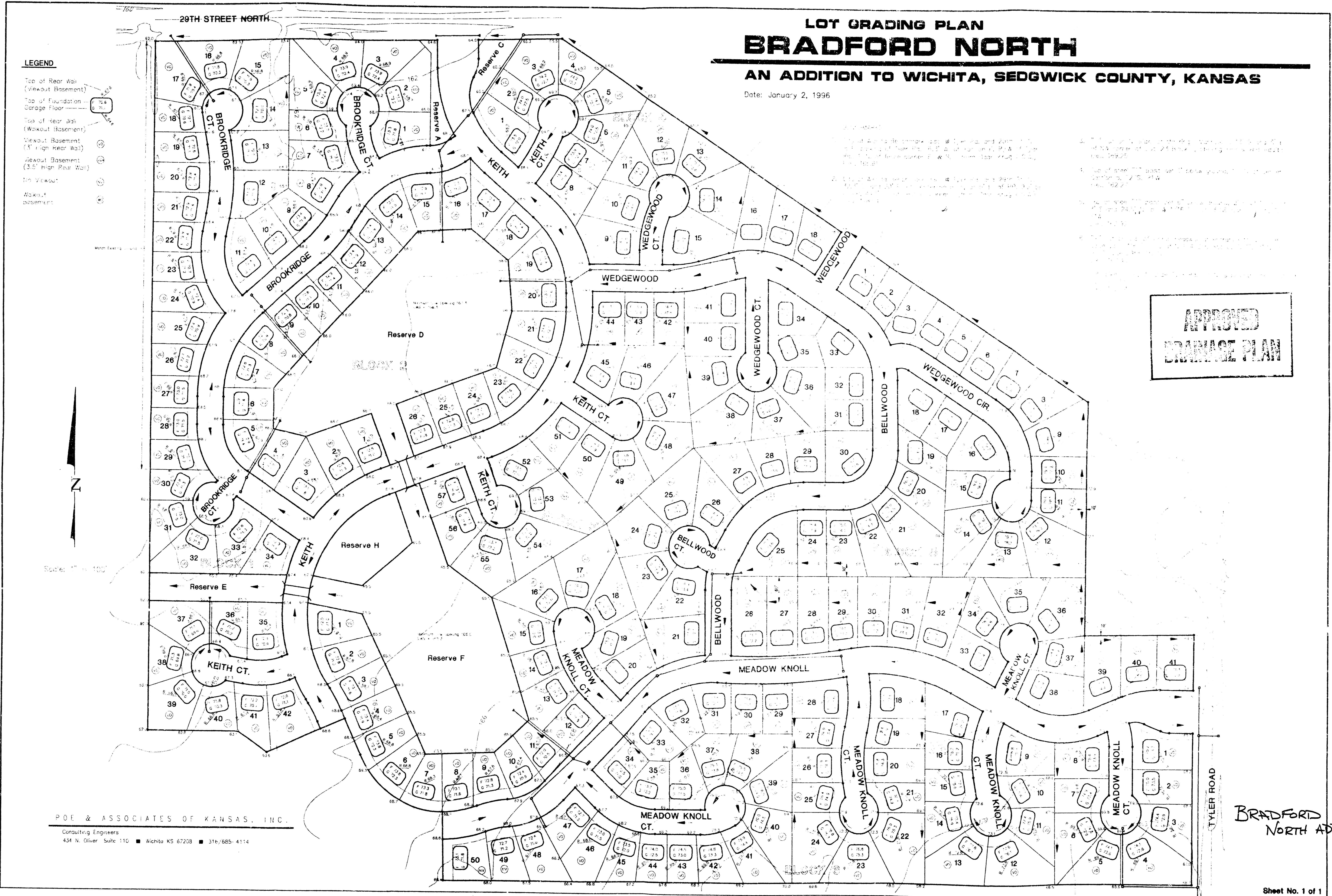
# LOT GRADING PLAN BRADFORD NORTH

AN ADDITION TO WICHITA, SEDGWICK COUNTY, KANSAS

Date: January 2, 1996

## LEGEND

- Top of Rear Wall (Viewout Basement)
- Top of Foundation Garage Floor
- Top of Rear Wall (Walkout Basement)
- Viewout Basement (3' High Rear Wall)
- Walkout Basement (3.5' High Rear Wall)
- In Viewout
- Walkout basement



**APPROVED  
DRAINAGE PLAN**

POE & ASSOCIATES OF KANSAS, INC.  
Consulting Engineers  
434 N. Oliver Suite 110 ■ Wichita KS 67208 ■ 316/685-4114

BRADFORD  
NORTH ADDN.