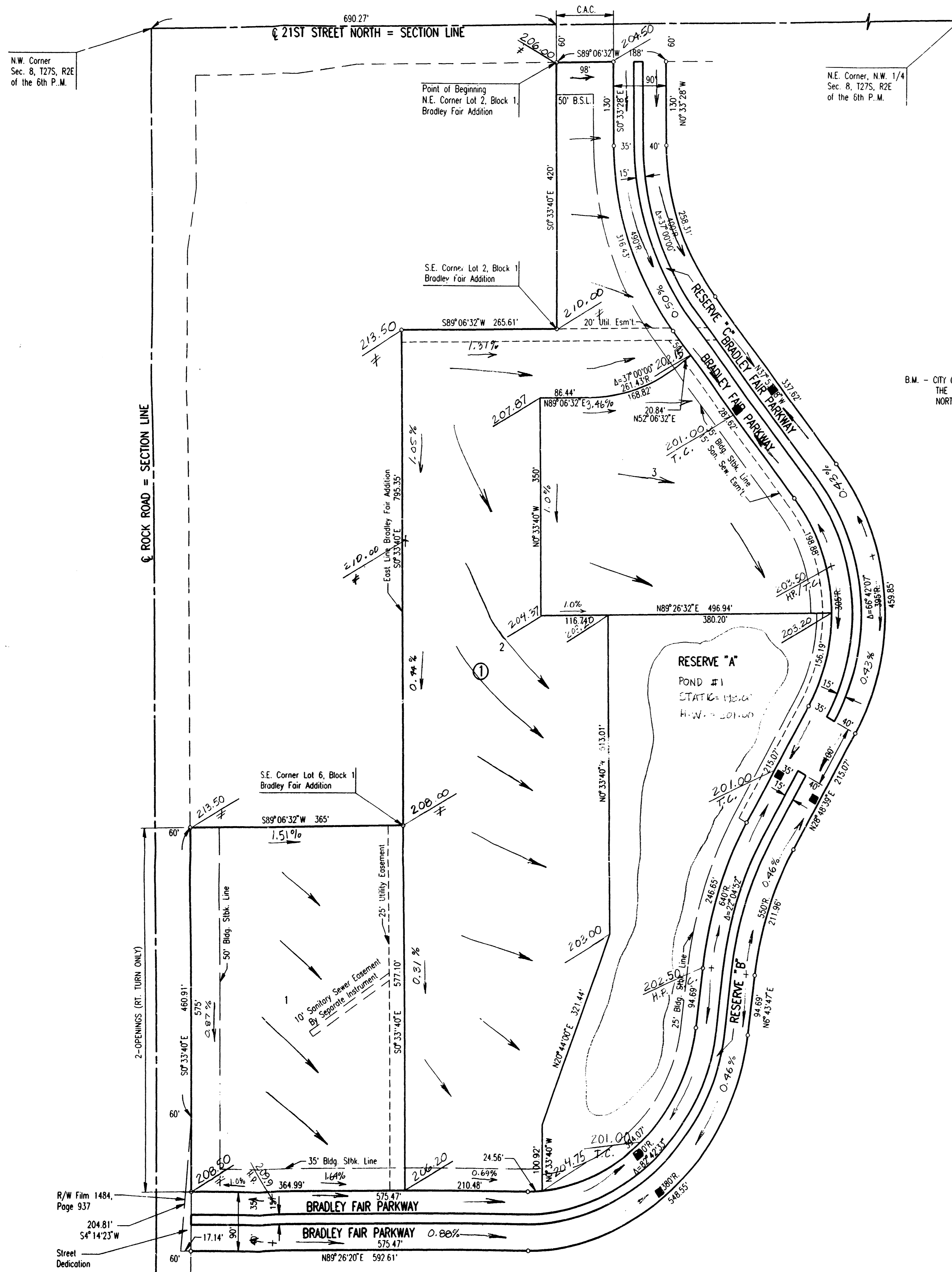


SHEET NO.	TOTAL SHEETS

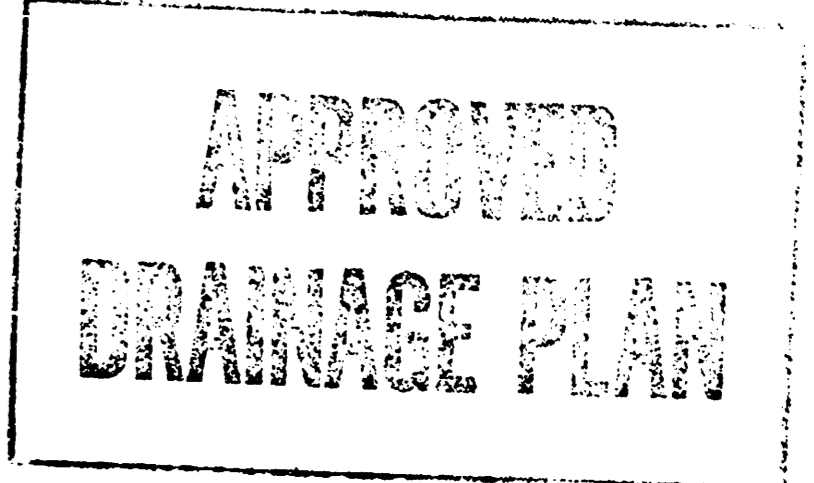
BRADLEY FAIR 2ND ADDITION TO WICHITA, SEDGWICK COUNTY, KANSAS



SCALE: 1"=100'
 B.M. - CITY OF WICHITA B.M. DISC. 45' NORTH AND 48' EAST OF THE INTERSECTION OF THE CENTERLINES OF 21ST STREET NORTH AND ROCK ROAD. ELEV. 214.568 CITY DATUM

LEGEND

- - CURB INLET
- - DIRECTION OF FLOW
- H.P. - HIGH POINT ELEVATION
- ≠ - MATCH EXISTING ELEVATION
- T.C. - TOP OF CURB ELEVATION
- ALL ELEVATIONS BASED ON CITY OF WICHITA DATUM.



BRADLEY FAIR 2ND
BRADLEY FAIR 2ND ADDITION

LOT GRADING PLAN
3/29/96

PROFESSIONAL ENGINEERING CONSULTANTS, P.A.
ENGINEERS
WICHITA, KANSAS

Designed by	Checked by
Drawn by DEP	Date MAR., 1996 Job No. 96110

DSNR: PAUL MILLER OPER: DEP SCALE: 1"=100.00
 03/19/96 9:51 TO PLATING 03-27-1996 9:45:32 am

R/W Film 1484,
Page 937
204.81'
54° 14' 23" W
Street
Dedication