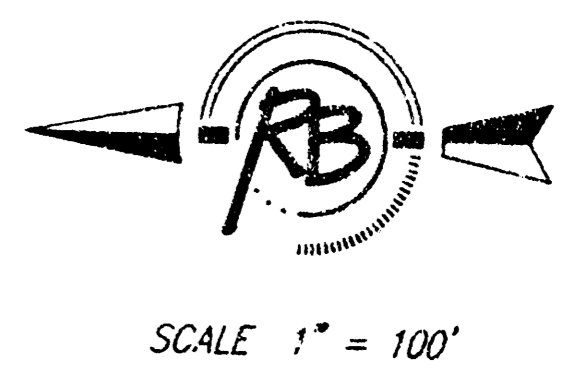
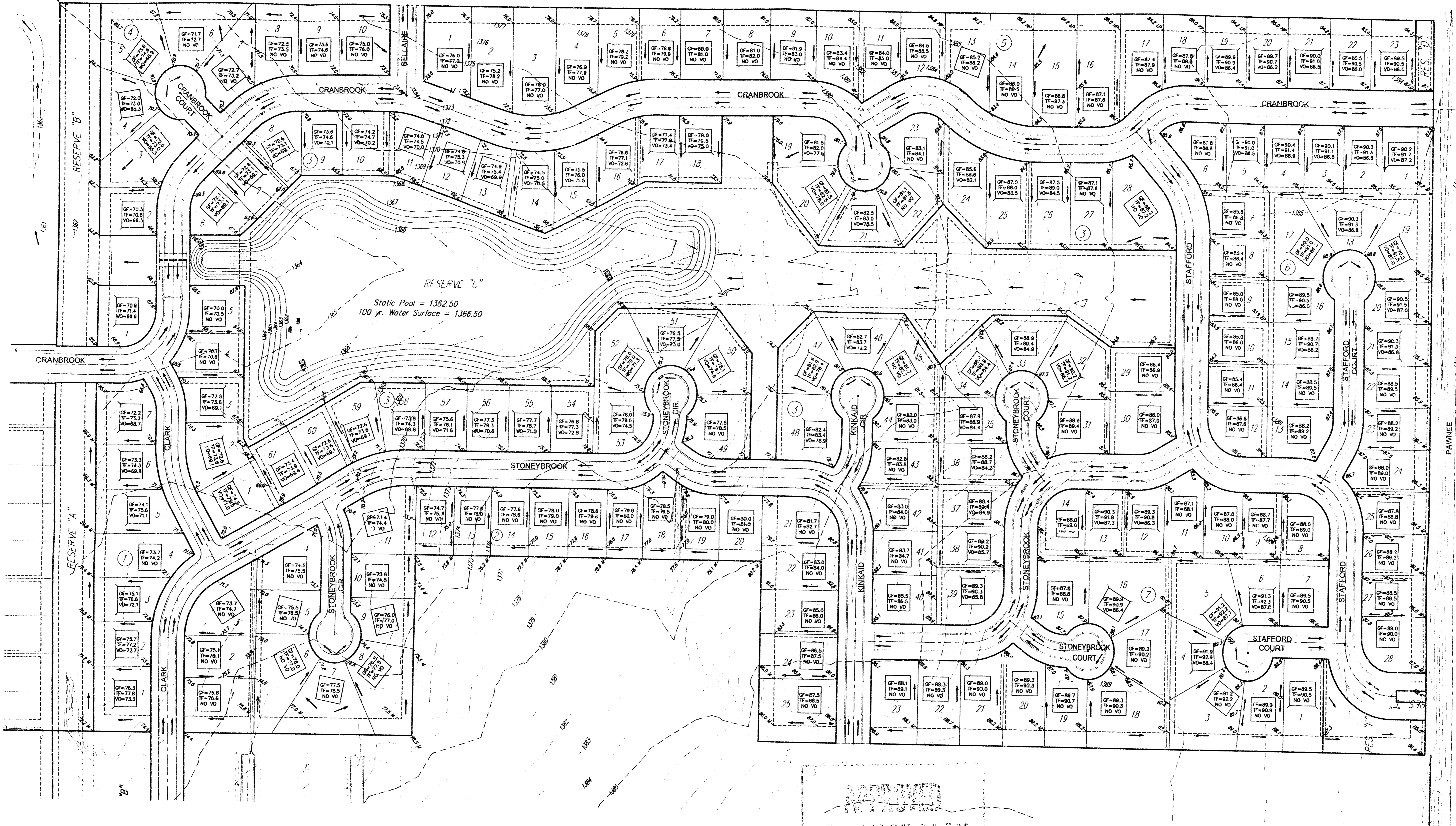


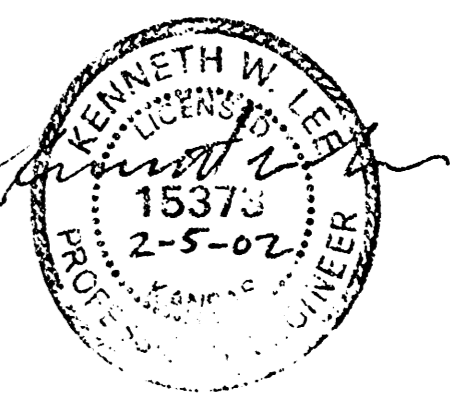
NE COR 3067  
SEC 33-75-2



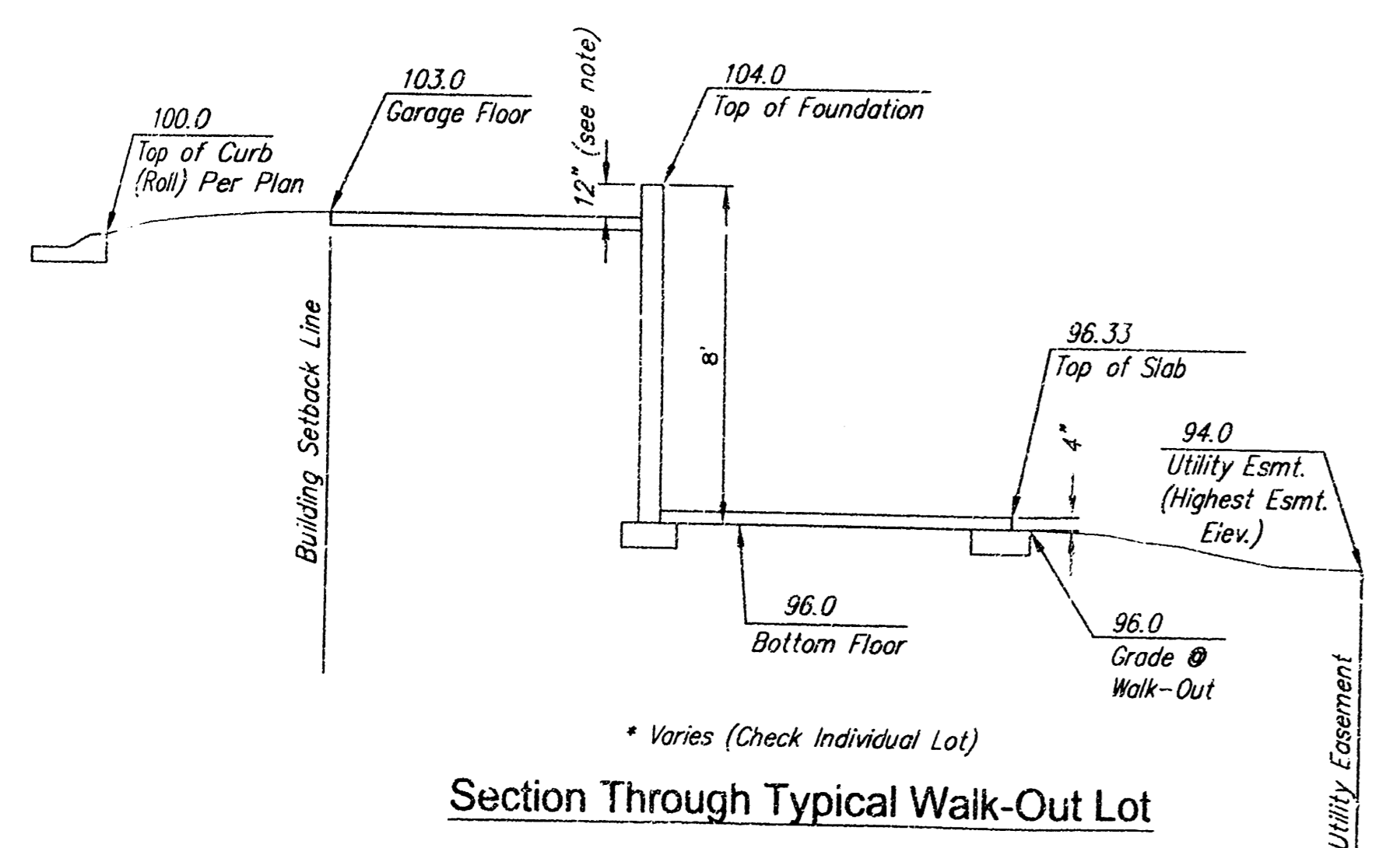
**BENCH MARKS**

BENCH MARK #1: U.S.S. BRASS PLUG 2 1/2" S. & 3/32" W. OF CENTERLINE INTERSECTION OF CLARK & FAHNEE  
ELEV.=136.25 NGVD

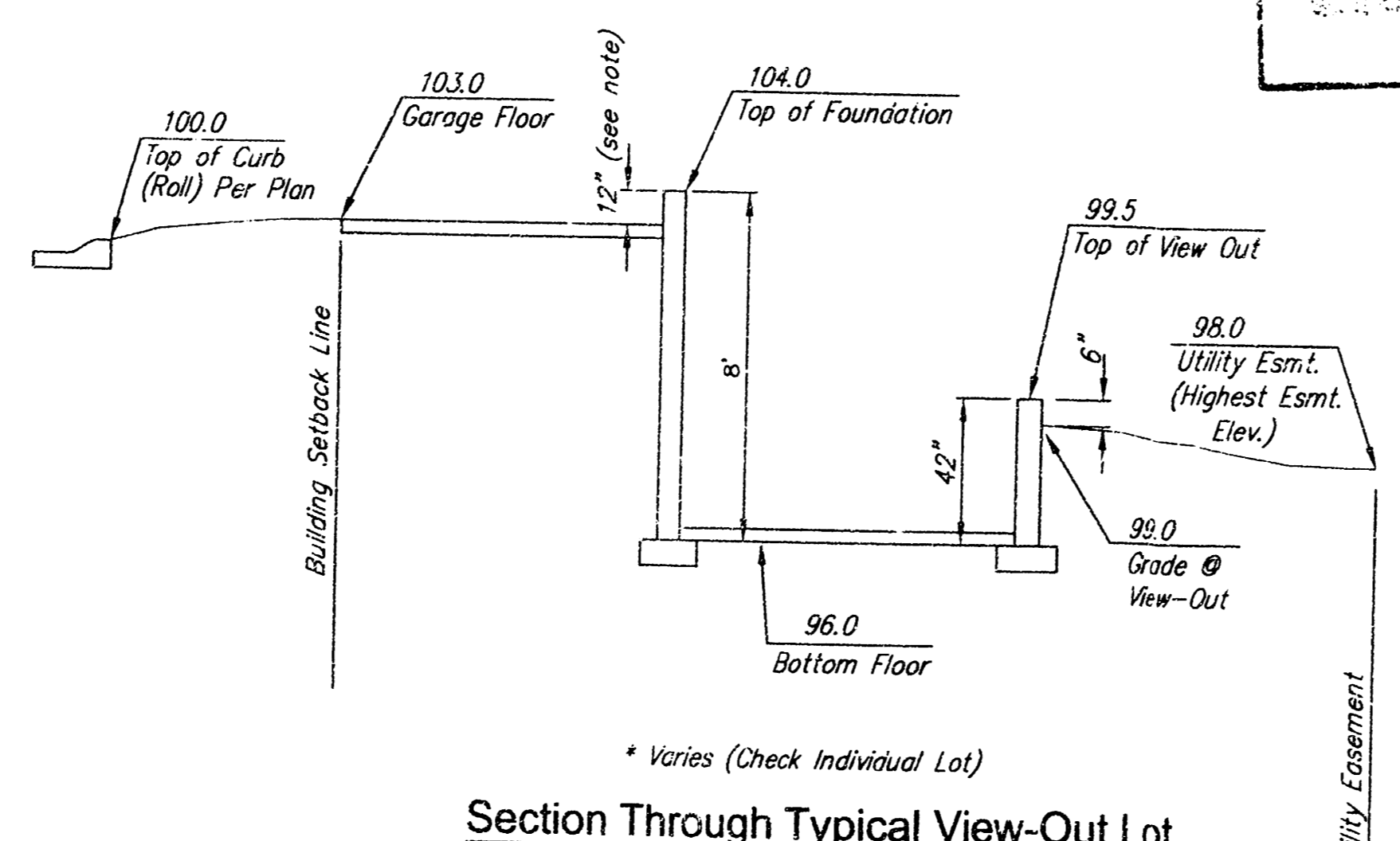
BENCH MARK #2: CITY OF WICHITA STD. DISC 20.8" W. & 34.5" S. OF CENTERLINE INTERSECTION DALTON & FAHNEE  
ELEV.=137.60 NGVD



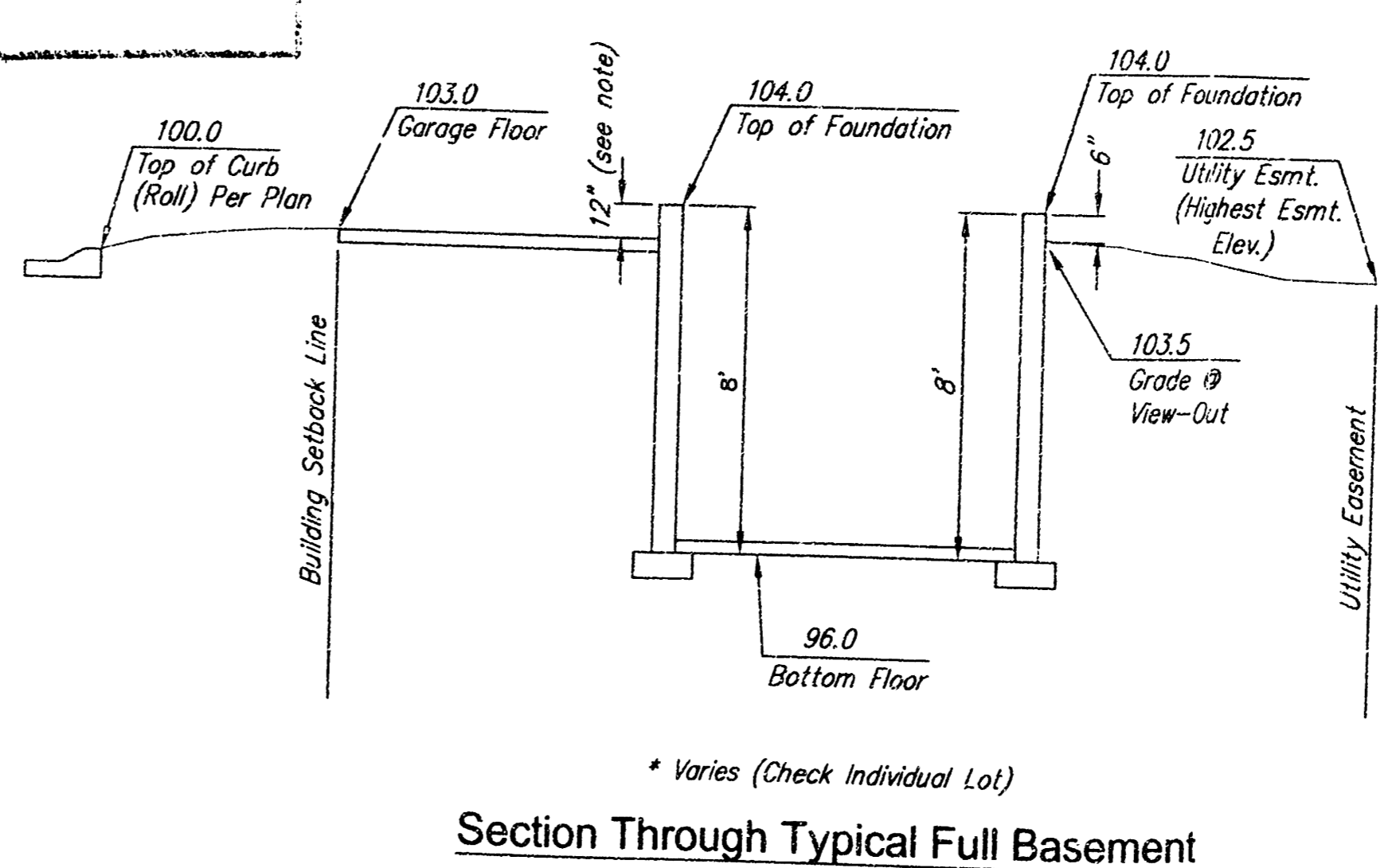
**APPROVED**  
ENGINEER'S SEAL



Section Through Typical Walk-Out Lot



Section Through Typical View-Out Lot



Section Through Typical Full Basement

NOTE: GRADES PROPOSED AT THE TIME OF HOME CONSTRUCTION MAY DIFFER FROM GRADES ON THIS PLAN. A DETAILED LOT GRADING PLAN STAMPED BY A PROFESSIONAL ENGINEER WILL BE REQUIRED FOR ANY LOT WHOSE PROPOSED GRADES DEVIATE FROM GRADES INDICATED HERE.

REVISED Feb. 5, 2002

**BRENTWOOD SOUTH ADDITION  
GRADING PLAN  
WICHITA, KANSAS**

Ruggles & Bohm, P.A.  
Engineering, Surveying, Land Planning

924 North Main  
Wichita, Kansas 67203  
www.rkansas.com

(316) 264-8008  
(316) 264-4621 fax  
E-mail: info@rkansas.com

|                            |                     |
|----------------------------|---------------------|
| DESIGN: K.W.L.             | DATE: June 8, 2001  |
| DRAWN: RA/K.W.L.           |                     |
| REVIEW: [ ]                |                     |
| UTILITY: [ ]               |                     |
| DRAWING FILE: grading plan | PROJECT NUMBER: [ ] |