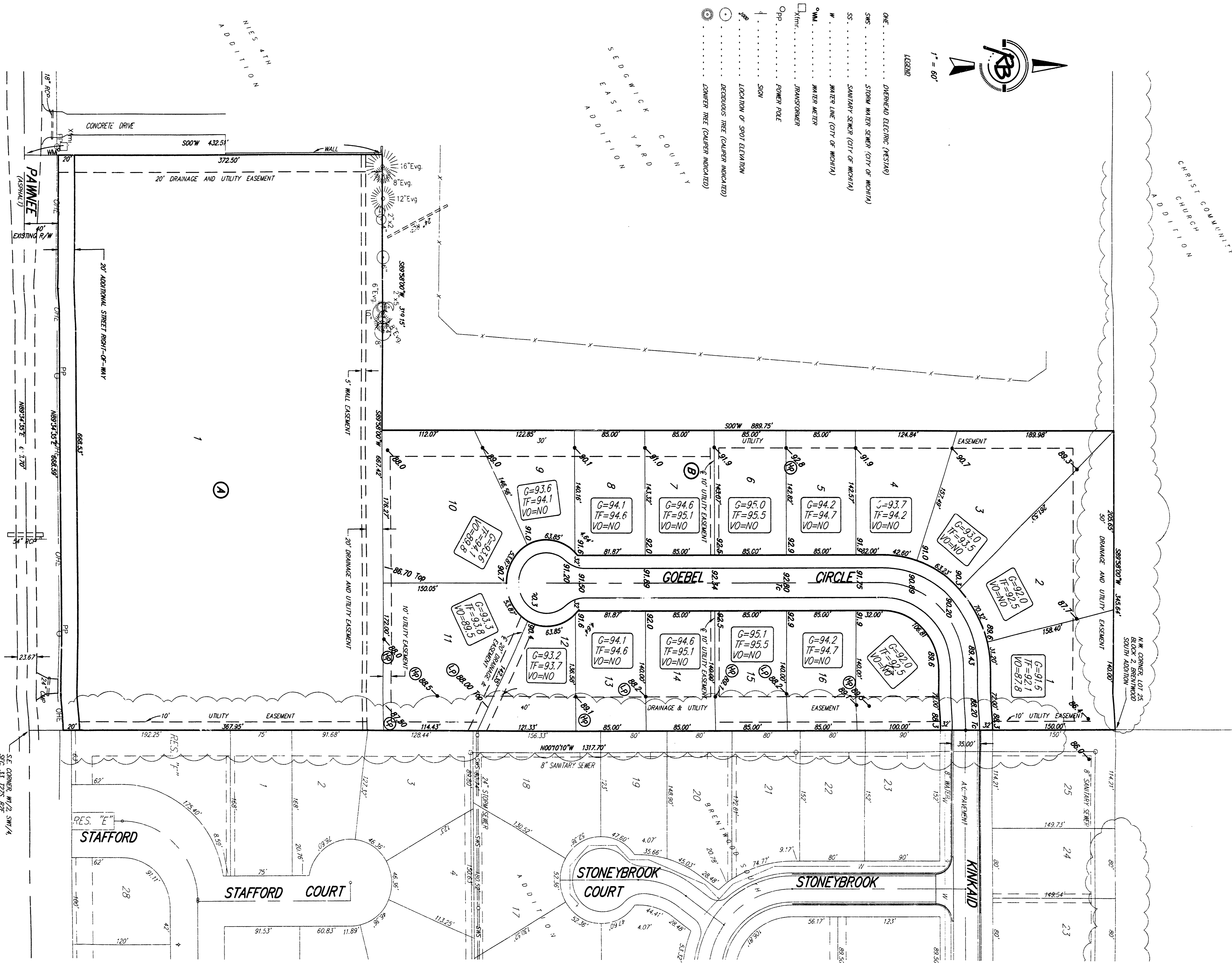


10/10/10
 24-6333
 BRENTWOOD SOUTH 2ND ADDITION
 Wichita, Sedgwick County, Kansas

Drainage Plan

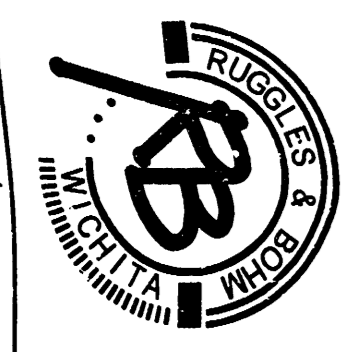


LEGAL DESCRIPTION:
 That part of the SW 1/4 of Sec. 33, T27S, R2E of the 6th P.M., Sedgwick County, Kansas, described as beginning at the northwest corner of Lot 23, Block 2, Brentwood South Addition, Wichita, Sedgwick County, Kansas; thence S89°58'00"W, 343.64 feet, thence S00°00'00"W, 689.79 feet, thence S89°58'00"W, 319.13 feet, thence S00°00'00"W, 432.51 feet, thence N89°34'35"E, 688.70 feet, thence N00°10'10"W, 137.70 feet to the place of beginning, EXCEPT the South 40.00 feet for right of way.

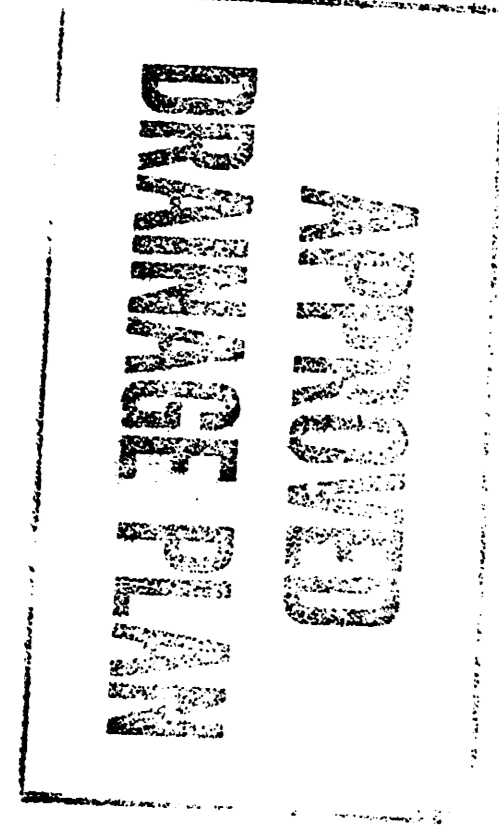
OWNER:
 Brentwood Development, Inc.
 527 N. Forestview
 Wichita, Kansas 67235
 Attn: Steve Miller
 Ph: (316) 259-2377

BRENTWOOD SOUTH 2ND ADDITION

DATE OF TOPOGRAPHY:
 AUGUST 6, 2003



Ruggles & Bohm, P.A.
 Engineering, Surveying, Land Planning
 924 North Main
 Wichita, Kansas 67203
 (316) 264-8098 fax
 www.ruggles.com
 E-mail: info@ruggles.com



DWG FILE: 2489 (Update) Plan.dwg
 PROJECT NO: 2489
 FILE: 11_2003

18' Redwood 6" x 6" 31' 11" x 24" 2025-5
 72' x 6" 4" 10' 10" x 6" 10' 10" x 6"