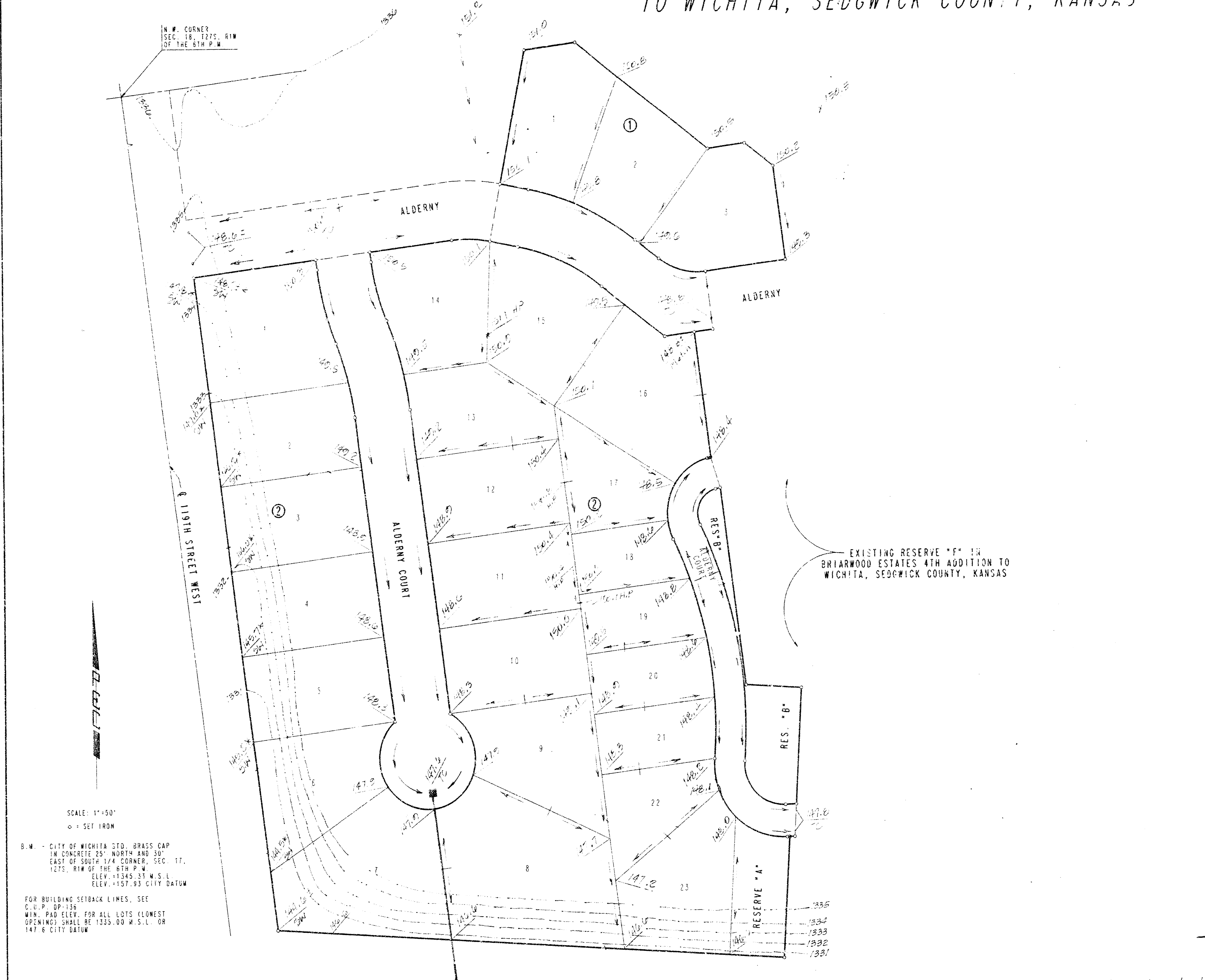


# BRIARWOOD ESTATES 6TH ADDITION TO WICHITA, SEDGWICK COUNTY, KANSAS



N.W. CORNER  
SEC. 18, 1275, R1W  
OF THE 6TH P.M.

SCALE: 1"=50'  
O = SET IRON

B.M. - CITY OF WICHITA STD. BRASS CAP  
IN CONCRETE 25' NORTH AND 50'  
EAST OF SOUTH 1/4 CORNER, SEC. 17,  
1275, R1W OF THE 6TH P.M.  
ELEV. +1345.31 M.S.L.  
ELEV. +157.93 CITY DATUM

FOR BUILDING SETBACK LINES, SEE  
C.I.P. DP-136  
MIN. PAD ELEV. FOR ALL LOTS (LOWEST  
OPENING) SHALL BE 1333.00 M.S.L. OR  
147.6 CITY DATUM

EXISTING RESERVE "F" IN  
BRIARWOOD ESTATES 4TH ADDITION TO  
WICHITA, SEDGWICK COUNTY, KANSAS

### LEGEND

- 130.5 Prop. Ground Elev. at Lot Corner
- Prop. Drainage Direction
- H.P. High Point
- T.C. Top Curb
- S.H. Sidewalk

Note: Contours Shown are mean sea level (M.S.L.).

\* Elevations as noted are sidewalk (S.W.) Design  
Elevations per City Project 472-81849.

BRIARWOOD  
ESTATES 6th  
→ Revised 14 October  
1992

**APPROVED  
DRAINAGE PLAN**

DETAILED DRAINAGE PLAN  
4-24-92

Revised 10/14/92

FILMED FROM THE BEST  
AVAILABLE COPY....