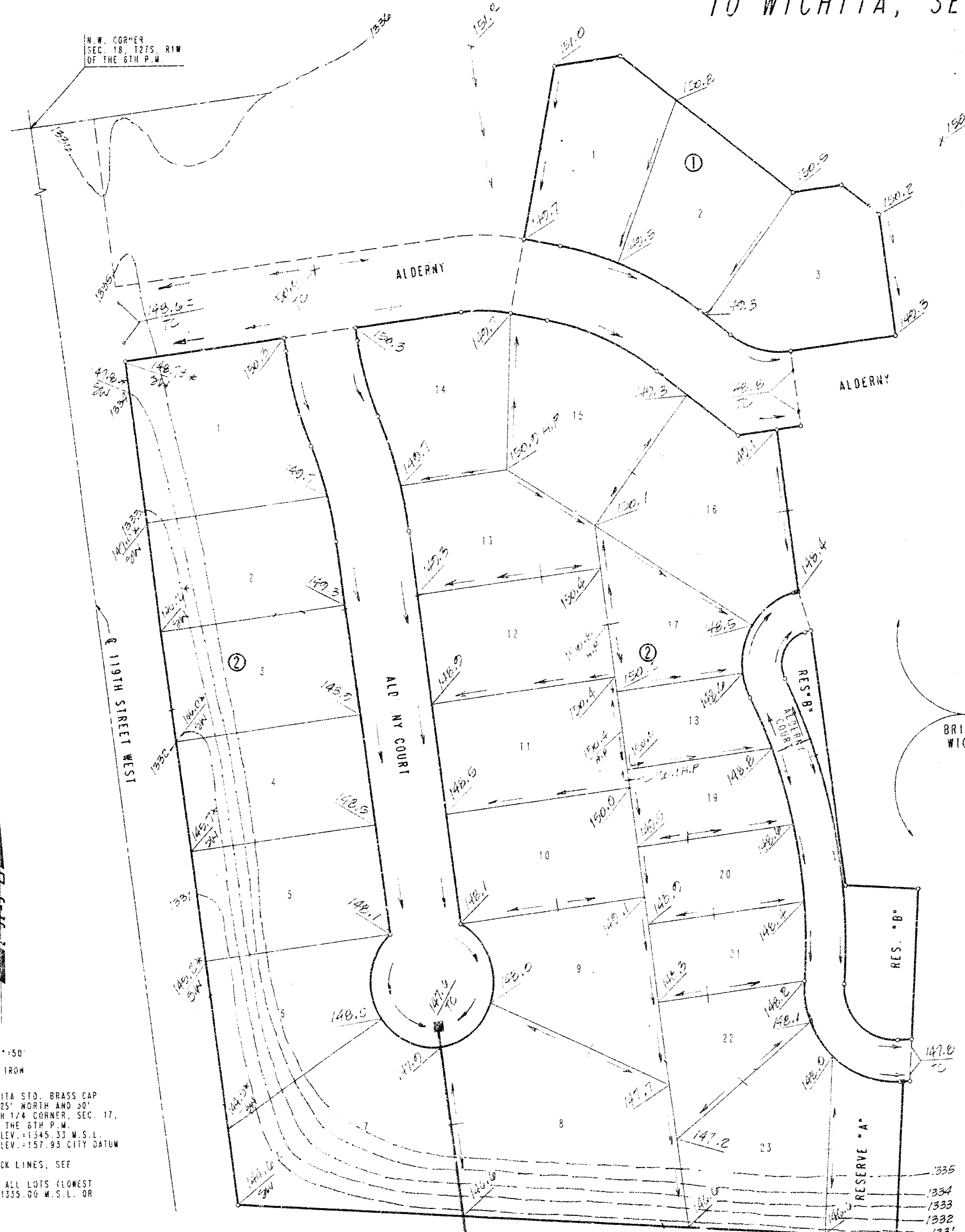


BRIARWOOD ESTATES 6TH ADDITION TO WICHITA, SEDGWICK COUNTY, KANSAS



EXISTING RESERVE *F* IN
BRIARWOOD ESTATES 4TH ADDITION TO
WICHITA, SEDGWICK COUNTY, KANSAS

- LEGEND**
- ∇ 150.5 Prop. Ground Elev. at Lot Corner
 - \rightarrow Prop. Drainage Direction
 - H.P. High Point
 - T.C. Top Curb
 - S.H. Sidewalk

Note: Contours shown are mean sea level (M.S.L.).

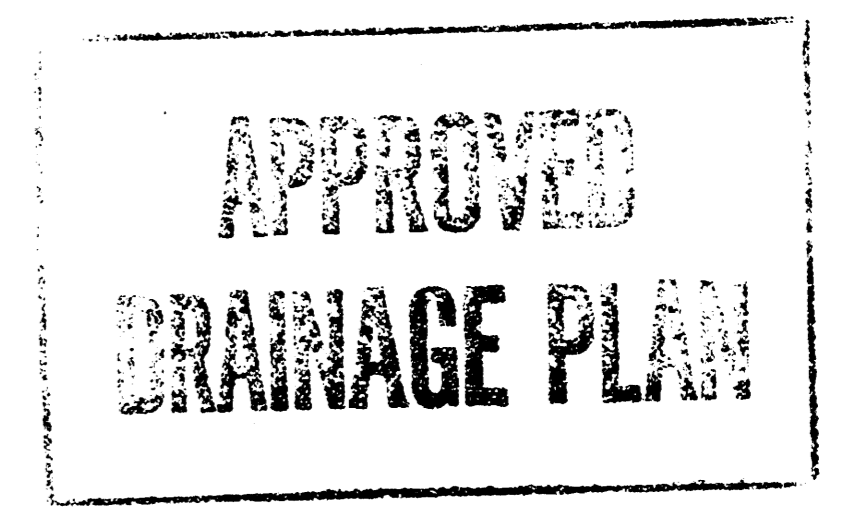
* Elevations as noted are sidewalk (S.W.) Design Elevations per City Project 472-81849.

SCALE: 1" = 50'
O = SET IRON

B.M. - CITY OF WICHITA STD. BRASS CAP
IN CONCRETE 25' NORTH AND 30'
EAST OF SOUTH 1/4 CORNER, SEC. 17,
T27S. R1W OF THE 6TH P.W. ELEV. 1345.33 M.S.L. OR
ELEV. 1357.93 CITY DATUM

FOR BUILDING SETBACK LINES, SEE
C.U.P. DP-136

MIN. PAD ELEV. FOR ALL LOTS (LOWEST
OPENING) SHALL BE 1335.00 M.S.L. OR
147.5 CITY DATUM



BRIARWOOD ESTATES 6TH
DETAILED DRAINAGE PLAN
4-24-02

NO RECORD 2/27/02