



MINIMUM BUILDING PAD ELEVATIONS FOR LOWEST OPENING OF STRUCTURE

Lot	Block	Elevation	
		M.S.L.	City Datum
16-19	B	1339.40	152.00
1-5	C	1339.40	152.00
1-17	D	1336.40	144.00
1-7	E	1336.40	149.00
11	L	1336.40	144.00

BENCHMARK  
 119TH ST. W. & CENTRAL CITY RD. 43' E & 46' S  
 OF C. BUSH. ELEV. = 156.43 (CITY DATUM)  
 (1344.33 M.S.L.)

1ST CUT - TOP OF CURB N. SIDE OF HICKORY ST.  
 26' S. EAST OF C. 119TH ST. W.  
 ELEV. = 159.97 (CITY DATUM)  
 (1346.37 M.S.L.)

NOTE  
 Proposed minimum garage floor elevations are shown on plans. Contractor to set finish floor elevation.

All street elevations shown on plans are for top of curb (full height).

Contour elevations shown are for graphic representation of drainage concept. Spot elevations shall take precedence over contour lines.

**APPROVED  
 DRAINAGE PLAN**

BUCKHEAD ADDITION  
**LOT GRADING PLAN**

**BAUGHMAN COMPANY P. A.**  
 ENGINEERING, SURVEYING, & PLANNING  
 316 E. 2nd Street, Suite 200, Wichita, Kansas 67201

PROJECT NUMBER: \_\_\_\_\_ SHEET: **1** of **3**

DESIGN: \_\_\_\_\_ DRAWN: \_\_\_\_\_ APPROVED: \_\_\_\_\_ DATE: 7-6-95 SCALE: 1"=60'

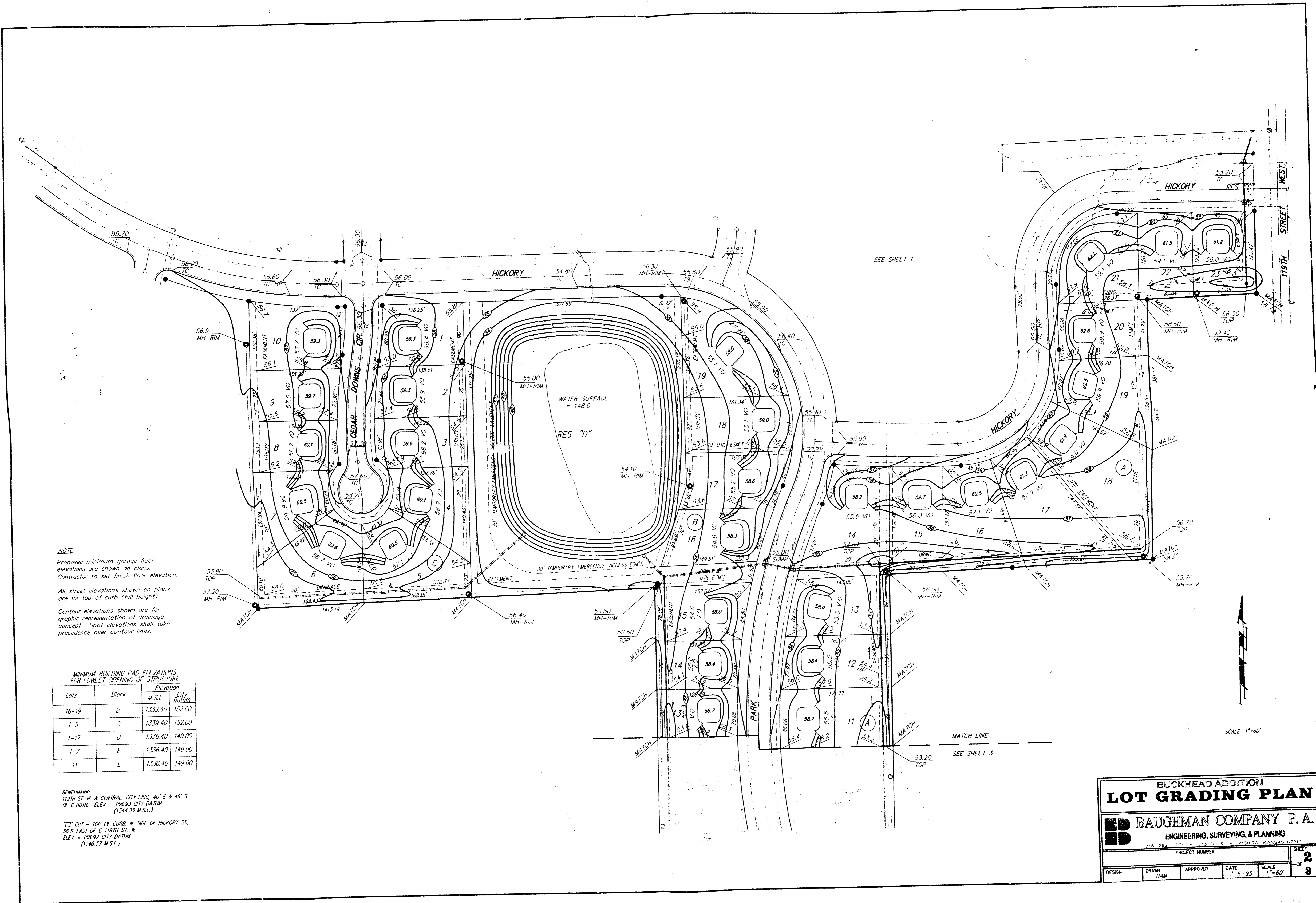
**NOTE:**  
 Proposed minimum garage floor elevations are shown on plans. Contractor to set finish floor elevation.  
 All street elevations shown on plans are for top of curb (full height).  
 Contour elevations shown are for graphic representation of drainage concept. Spot elevations shall take precedence over contour lines.

**MINIMUM BUILDING PAD ELEVATIONS FOR LOWEST OPENING OF STRUCTURE**

Lots	Block	Elevation	
		M.S.L.	City Datum
16-19	B	1339.40	152.00
1-5	C	1339.40	152.00
1-17	D	1336.40	149.00
1-7	E	1336.40	149.00
11	E	1336.40	149.00

**BENCHMARK:**  
 119TH ST. W. & CENTRAL, CITY DISC. 40' E & 46' S  
 OF C. BOTH. ELEV. = 156.93 CITY DATUM  
 (1344.33 M.S.L.)

"T" CUT - TOP OF CURB, N. SIDE OF HICKORY ST.  
 56.5' EAST OF C. 119TH ST. W.  
 ELEV. = 158.97 CITY DATUM  
 (1346.37 M.S.L.)



**BUCKHEAD ADDITION**  
**LOT GRADING PLAN**

**ED BAUGHMAN COMPANY P.A.**  
 ENGINEERING, SURVEYING, & PLANNING  
 316 282 1271 • 112 LULLS • WICHITA, KANSAS 67214

PROJECT NUMBER: \_\_\_\_\_ SHEET: **2** OF **3**

DESIGN: \_\_\_\_\_ DRAWN: *DM* APPROVED: \_\_\_\_\_ DATE: 6-25 SCALE: 1"=60'

**NOTE:**  
 Proposed minimum garage floor elevations are shown on plans. Contractor to set finish floor elevation.  
 All street elevations shown on plans are for top of curb (full height).  
 Contour elevations shown are for graphic representation of drainage concept. Spot elevations shall take precedence over contour lines.

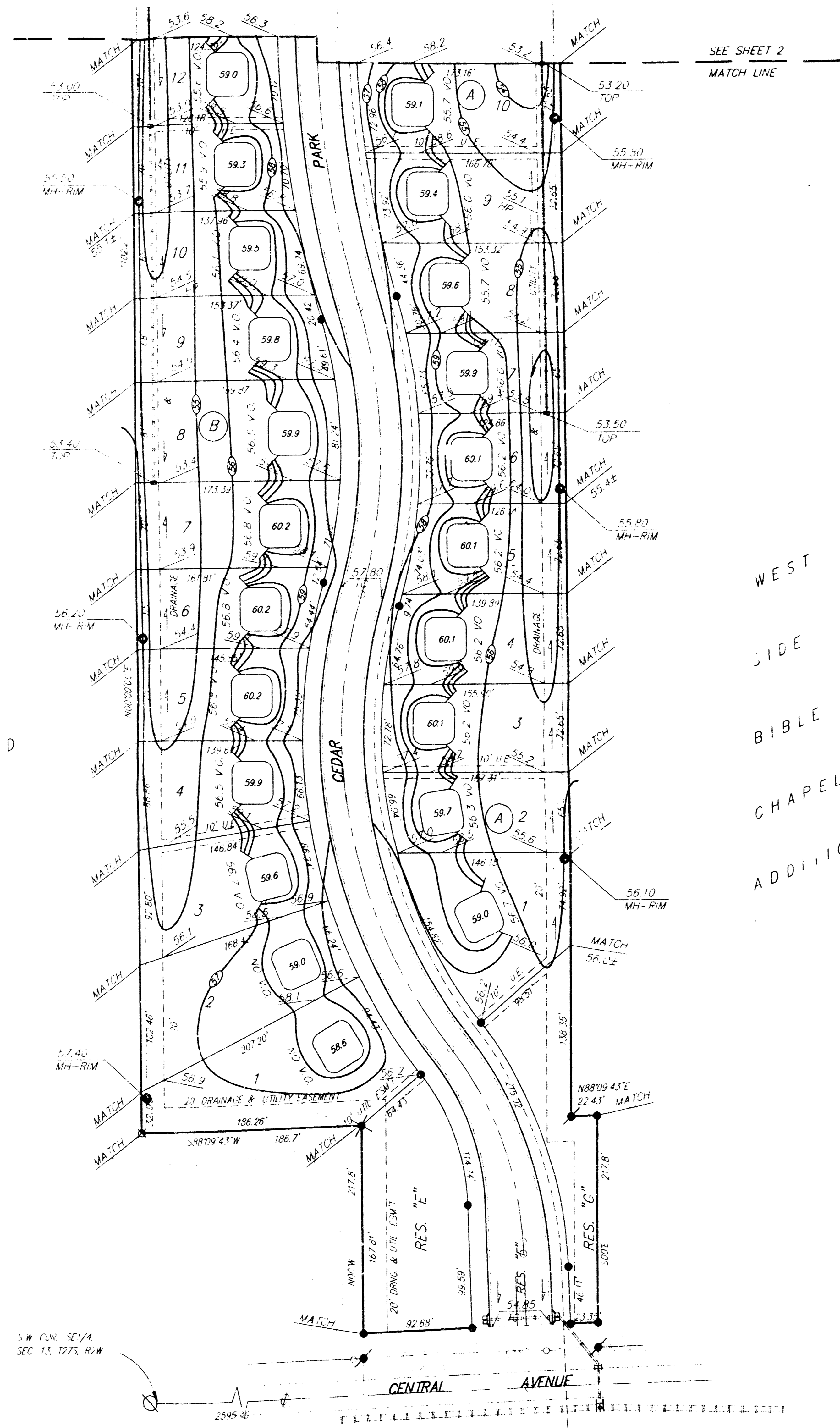
**MINIMUM BUILDING PAD ELEVATIONS FOR LOWEST OPENINGS OF STRUCTURE**

Lots	Block	M.S.L. Elevation	City Datum
16-19	B	1339.40	152.00
1-5	C	1339.40	152.00
1-17	D	1336.40	149.00
1-7	E	1336.40	149.00
11	E	1336.40	149.00

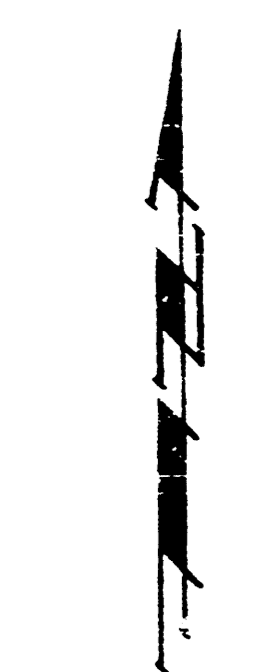
**BENCHMARK:**  
 119th ST W & CENTRAL CITY DISC. 40' E & 46' S  
 OF C BOTH. ELEV = 136.93 CITY DATUM  
 (1344.32 M.S.L.)

"C" CUT - TOP OF CURB, N. SIDE OF HICKORY ST.  
 36.5' EAST OF C. 119th ST. W  
 ELEV = 158.37 CITY DATUM  
 (1346.32 M.S.L.)

UNPLATTED



WEST  
 SIDE  
 BIBLE  
 CHAPEL  
 ADDITION



SCALE 1"=100'

BUCKHEAD ADDITION  
**LOT GRADING PLAN**  
 BAUGHMAN COMPANY P.A.  
 ENGINEERING, SURVEYING, & PLANNING  
 PROJECT NUMBER: 318-82-12-11, 318-81-13-10, 318-81-13-11, 318-81-13-12, 318-81-13-13, 318-81-13-14, 318-81-13-15, 318-81-13-16, 318-81-13-17, 318-81-13-18, 318-81-13-19, 318-81-13-20, 318-81-13-21, 318-81-13-22, 318-81-13-23, 318-81-13-24, 318-81-13-25, 318-81-13-26, 318-81-13-27, 318-81-13-28, 318-81-13-29, 318-81-13-30, 318-81-13-31, 318-81-13-32, 318-81-13-33, 318-81-13-34, 318-81-13-35, 318-81-13-36, 318-81-13-37, 318-81-13-38, 318-81-13-39, 318-81-13-40, 318-81-13-41, 318-81-13-42, 318-81-13-43, 318-81-13-44, 318-81-13-45, 318-81-13-46, 318-81-13-47, 318-81-13-48, 318-81-13-49, 318-81-13-50, 318-81-13-51, 318-81-13-52, 318-81-13-53, 318-81-13-54, 318-81-13-55, 318-81-13-56, 318-81-13-57, 318-81-13-58, 318-81-13-59, 318-81-13-60, 318-81-13-61, 318-81-13-62, 318-81-13-63, 318-81-13-64, 318-81-13-65, 318-81-13-66, 318-81-13-67, 318-81-13-68, 318-81-13-69, 318-81-13-70, 318-81-13-71, 318-81-13-72, 318-81-13-73, 318-81-13-74, 318-81-13-75, 318-81-13-76, 318-81-13-77, 318-81-13-78, 318-81-13-79, 318-81-13-80, 318-81-13-81, 318-81-13-82, 318-81-13-83, 318-81-13-84, 318-81-13-85, 318-81-13-86, 318-81-13-87, 318-81-13-88, 318-81-13-89, 318-81-13-90, 318-81-13-91, 318-81-13-92, 318-81-13-93, 318-81-13-94, 318-81-13-95, 318-81-13-96, 318-81-13-97, 318-81-13-98, 318-81-13-99, 318-81-13-100, 318-81-13-101, 318-81-13-102, 318-81-13-103, 318-81-13-104, 318-81-13-105, 318-81-13-106, 318-81-13-107, 318-81-13-108, 318-81-13-109, 318-81-13-110, 318-81-13-111, 318-81-13-112, 318-81-13-113, 318-81-13-114, 318-81-13-115, 318-81-13-116, 318-81-13-117, 318-81-13-118, 318-81-13-119, 318-81-13-120, 318-81-13-121, 318-81-13-122, 318-81-13-123, 318-81-13-124, 318-81-13-125, 318-81-13-126, 318-81-13-127, 318-81-13-128, 318-81-13-129, 318-81-13-130, 318-81-13-131, 318-81-13-132, 318-81-13-133, 318-81-13-134, 318-81-13-135, 318-81-13-136, 318-81-13-137, 318-81-13-138, 318-81-13-139, 318-81-13-140, 318-81-13-141, 318-81-13-142, 318-81-13-143, 318-81-13-144, 318-81-13-145, 318-81-13-146, 318-81-13-147, 318-81-13-148, 318-81-13-149, 318-81-13-150, 318-81-13-151, 318-81-13-152, 318-81-13-153, 318-81-13-154, 318-81-13-155, 318-81-13-156, 318-81-13-157, 318-81-13-158, 318-81-13-159, 318-81-13-160, 318-81-13-161, 318-81-13-162, 318-81-13-163, 318-81-13-164, 318-81-13-165, 318-81-13-166, 318-81-13-167, 318-81-13-168, 318-81-13-169, 318-81-13-170, 318-81-13-171, 318-81-13-172, 318-81-13-173, 318-81-13-174, 318-81-13-175, 318-81-13-176, 318-81-13-177, 318-81-13-178, 318-81-13-179, 318-81-13-180, 318-81-13-181, 318-81-13-182, 318-81-13-183, 318-81-13-184, 318-81-13-185, 318-81-13-186, 318-81-13-187, 318-81-13-188, 318-81-13-189, 318-81-13-190, 318-81-13-191, 318-81-13-192, 318-81-13-193, 318-81-13-194, 318-81-13-195, 318-81-13-196, 318-81-13-197, 318-81-13-198, 318-81-13-199, 318-81-13-200, 318-81-13-201, 318-81-13-202, 318-81-13-203, 318-81-13-204, 318-81-13-205, 318-81-13-206, 318-81-13-207, 318-81-13-208, 318-81-13-209, 318-81-13-210, 318-81-13-211, 318-81-13-212, 318-81-13-213, 318-81-13-214, 318-81-13-215, 318-81-13-216, 318-81-13-217, 318-81-13-218, 318-81-13-219, 318-81-13-220, 318-81-13-221, 318-81-13-222, 318-81-13-223, 318-81-13-224, 318-81-13-225, 318-81-13-226, 318-81-13-227, 318-81-13-228, 318-81-13-229, 318-81-13-230, 318-81-13-231, 318-81-13-232, 318-81-13-233, 318-81-13-234, 318-81-13-235, 318-81-13-236, 318-81-13-237, 318-81-13-238, 318-81-13-239, 318-81-13-240, 318-81-13-241, 318-81-13-242, 318-81-13-243, 318-81-13-244, 318-81-13-245, 318-81-13-246, 318-81-13-247, 318-81-13-248, 318-81-13-249, 318-81-13-250, 318-81-13-251, 318-81-13-252, 318-81-13-253, 318-81-13-254, 318-81-13-255, 318-81-13-256, 318-81-13-257, 318-81-13-258, 318-81-13-259, 318-81-13-260, 318-81-13-261, 318-81-13-262, 318-81-13-263, 318-81-13-264, 318-81-13-265, 318-81-13-266, 318-81-13-267, 318-81-13-268, 318-81-13-269, 318-81-13-270, 318-81-13-271, 318-81-13-272, 318-81-13-273, 318-81-13-274, 318-81-13-275, 318-81-13-276, 318-81-13-277, 318-81-13-278, 318-81-13-279, 318-81-13-280, 318-81-13-281, 318-81-13-282, 318-81-13-283, 318-81-13-284, 318-81-13-285, 318-81-13-286, 318-81-13-287, 318-81-13-288, 318-81-13-289, 318-81-13-290, 318-81-13-291, 318-81-13-292, 318-81-13-293, 318-81-13-294, 318-81-13-295, 318-81-13-296, 318-81-13-297, 318-81-13-298, 318-81-13-299, 318-81-13-300, 318-81-13-301, 318-81-13-302, 318-81-13-303, 318-81-13-304, 318-81-13-305, 318-81-13-306, 318-81-13-307, 318-81-13-308, 318-81-13-309, 318-81-13-310, 318-81-13-311, 318-81-13-312, 318-81-13-313, 318-81-13-314, 318-81-13-315, 318-81-13-316, 318-81-13-317, 318-81-13-318, 318-81-13-319, 318-81-13-320, 318-81-13-321, 318-81-13-322, 318-81-13-323, 318-81-13-324, 318-81-13-325, 318-81-13-326, 318-81-13-327, 318-81-13-328, 318-81-13-329, 318-81-13-330, 318-81-13-331, 318-81-13-332, 318-81-13-333, 318-81-13-334, 318-81-13-335, 318-81-13-336, 318-81-13-337, 318-81-13-338, 318-81-13-339, 318-81-13-340, 318-81-13-341, 318-81-13-342, 318-81-13-343, 318-81-13-344, 318-81-13-345, 318-81-13-346, 318-81-13-347, 318-81-13-348, 318-81-13-349, 318-81-13-350, 318-81-13-351, 318-81-13-352, 318-81-13-353, 318-81-13-354, 318-81-13-355, 318-81-13-356, 318-81-13-357, 318-81-13-358, 318-81-13-359, 318-81-13-360, 318-81-13-361, 318-81-13-362, 318-81-13-363, 318-81-13-364, 318-81-13-365, 318-81-13-366, 318-81-13-367, 318-81-13-368, 318-81-13-369, 318-81-13-370, 318-81-13-371, 318-81-13-372, 318-81-13-373, 318-81-13-374, 318-81-13-375, 318-81-13-376, 318-81-13-377, 318-81-13-378, 318-81-13-379, 318-81-13-380, 318-81-13-381, 318-81-13-382, 318-81-13-383, 318-81-13-384, 318-81-13-385, 318-81-13-386, 318-81-13-387, 318-81-13-388, 318-81-13-389, 318-81-13-390, 318-81-13-391, 318-81-13-392, 318-81-13-393, 318-81-13-394, 318-81-13-395, 318-81-13-396, 318-81-13-397, 318-81-13-398, 318-81-13-399, 318-81-13-400, 318-81-13-401, 318-81-13-402, 318-81-13-403, 318-81-13-404, 318-81-13-405, 318-81-13-406, 318-81-13-407, 318-81-13-408, 318-81-13-409, 318-81-13-410, 318-81-13-411, 318-81-13-412, 318-81-13-413, 318-81-13-414, 318-81-13-415, 318-81-13-416, 318-81-13-417, 318-81-13-418, 318-81-13-419, 318-81-13-420, 318-81-13-421, 318-81-13-422, 318-81-13-423, 318-81-13-424, 318-81-13-425, 318-81-13-426, 318-81-13-427, 318-81-13-428, 318-81-13-429, 318-81-13-430, 318-81-13-431, 318-81-13-432, 318-81-13-433, 318-81-13-434, 318-81-13-435, 318-81-13-436, 318-81-13-437, 318-81-13-438, 318-81-13-439, 318-81-13-440, 318-81-13-441, 318-81-13-442, 318-81-13-443, 318-81-13-444, 318-81-13-445, 318-81-13-446, 318-81-13-447, 318-81-13-448, 318-81-13-449, 318-81-13-450, 318-81-13-451, 318-81-13-452, 318-81-13-453, 318-81-13-454, 318-81-13-455, 318-81-13-456, 318-81-13-457, 318-81-13-458, 318-81-13-459, 318-81-13-460, 318-81-13-461, 318-81-13-462, 318-81-13-463, 318-81-13-464, 318-81-13-465, 318-81-13-466, 318-81-13-467, 318-81-13-468, 318-81-13-469, 318-81-13-470, 318-81-13-471, 318-81-13-472, 318-81-13-473, 318-81-13-474, 318-81-13-475, 318-81-13-476, 318-81-13-477, 318-81-13-478, 318-81-13-479, 318-81-13-480, 318-81-13-481, 318-81-13-482, 318-81-13-483, 318-81-13-484, 318-81-13-485, 318-81-13-486, 318-81-13-487, 318-81-13-488, 318-81-13-489, 318-81-13-490, 318-81-13-491, 318-81-13-492, 318-81-13-493, 318-81-13-494, 318-81-13-495, 318-81-13-496, 318-81-13-497, 318-81-13-498, 318-81-13-499, 318-81-13-500, 318-81-13-501, 318-81-13-502, 318-81-13-503, 318-81-13-504, 318-81-13-505, 318-81-13-506, 318-81-13-507, 318-81-13-508, 318-81-13-509, 318-81-13-510, 318-81-13-511, 318-81-13-512, 318-81-13-513, 318-81-13-514, 318-81-13-515, 318-81-13-516, 318-81-13-517, 318-81-13-518, 318-81-13-519, 318-81-13-520, 318-81-13-521, 318-81-13-522, 318-81-13-523, 318-81-13-524, 318-81-13-525, 318-81-13-526, 318-81-13-527, 318-81-13-528, 318-81-13-529, 318-81-13-530, 318-81-13-531, 318-81-13-532, 318-81-13-533, 318-81-13-534, 318-81-13-535, 318-81-13-536, 318-81-13-537, 318-81-13-538, 318-81-13-539, 318-81-13-540, 318-81-13-541, 318-81-13-542, 318-81-13-543, 318-81-13-544, 318-81-13-545, 318-81-13-546, 318-81-13-547, 318-81-13-548, 318-81-13-549, 318-81-13-550, 318-81-13-551, 318-81-13-552, 318-81-13-553, 318-81-13-554, 318-81-13-555, 318-81-13-556, 318-81-13-557, 318-81-13-558, 318-81-13-559, 318-81-13-560, 318-81-13-561, 318-81-13-562, 318-81-13-563, 318-81-13-564, 318-81-13-565, 318-81-13-566, 318-81-13-567, 318-81-13-568, 318-81-13-569, 318-81-13-570, 318-81-13-571, 318-81-13-572, 318-81-13-573, 318-81-13-574, 318-81-13-575, 318-81-13-576, 318-81-13-577, 318-81-13-578, 318-81-13-579, 318-81-13-580, 318-81-13-581, 318-81-13-582, 318-81-13-583, 318-81-13-584, 318-81-13-585, 318-81-13-586, 318-81-13-587, 318-81-13-588, 318-81-13-589, 318-81-13-590, 318-81-13-591, 318-81-13-592, 318-81-13-593, 318-81-13-594, 318-81-13-595, 318-81-13-596, 318-81-13-597, 318-81-13-598, 318-81-13-599, 318-81-13-600, 318-81-13-601, 318-81-13-602, 318-81-13-603, 318-81-13-604, 318-81-13-605, 318-81-13-606, 318-81-13-607, 318-81-13-608, 318-81-13-609, 318-81-13-610, 318-81-13-611, 318-81-13-612, 318-81-13-613, 318-81-13-614, 318-81-13-615, 318-81-13-616, 318-81-13-617, 318-81-13-618, 318-81-13-619, 318-81-13-620, 318-81-13-621, 318-81-13-622, 318-81-13-623, 318-81-13-624, 318-81-13-625, 318-81-13-626, 318-81-13-627, 318-81-13-628, 318-81-13-629, 318-81-13-630, 318-81-13-631, 318-81-13-632, 318-81-13-633, 318-81-13-634, 318-81-13-635, 318-81-13-636, 318-81-13-637, 318-81-13-638, 318-81-13-639, 318-81-13-640, 318-81-13-641, 318-81-13-642, 318-81-13-643, 318-81-13-644, 318-81-13-645, 318-81-13-646, 318-81-13-647, 318-81-13-648, 318-81-13-649, 318-81-13-650, 318-81-13-651, 318-81-13-652, 318-81-13-653, 318-81-13-654, 318-81-13-655, 318-81-13-656, 318-81-13-657, 318-81-13-658, 318-81-13-659, 318-81-13-660, 318-81-13-661, 318-81-13-662, 318-81-13-663, 318-81-13-664, 318-81-13-665, 318-81-13-666, 318-81-13-667, 318-81-13-668, 318-81-13-669, 318-81-13-670, 318-81-13-671, 318-81-13-672, 318-81-13-673, 318-81-13-674, 318-81-13-675, 318-81-13-676, 318-81-13-677, 318-81-13-678, 318-81-13-679, 318-81-13-680, 318-81-13-681, 318-81-13-682, 318-81-13-683, 318-81-13-684, 318-81-13-685, 318-81-13-686, 318-81-13-687, 318-81-13-688, 318-81-13-689, 318-81-13-690, 318-81-13-691, 318-81-13-692, 318-81-13-693, 318-81-13-694, 318-81-13-695, 318-81-13-696, 318-81-13-697, 318-81-13-698, 318-81-13-699, 318-81-13-700, 318-81-13-701, 318-81-13-702, 318-81-13-703, 318-81-13-704, 318-81-13-705, 318-81-13-706, 318-81-13-707, 318-81-13-708, 318-81-13-709, 318-81-13-710, 318-81-13-711, 318-81-13-712, 318-81-13-713, 318-81-13-714, 318-81-13-715, 318-81-13-716, 318-81-13-717, 318-81-13-718, 318-81-13-719, 318-81-13-720, 318-81-13-721, 318-81-13-722, 318-81-13-723, 318-81-13-724, 318-81-13-725, 318-81-13-726, 318-81-13-727, 318-81-13-728, 318-81-13-729, 318-81-13-730, 318-81-13-731, 318-81-13-732, 318-81-13-733, 318-81-13-734, 318-81-13-735, 318-81-13-736, 318-81-13-737, 318-81-13-738, 318-81-13-739, 318-81-13-740, 318-81-13-741, 318-81-13-742, 318-81-13-743, 318-81-13-744, 318-81-13-745, 318-81-13-746, 318-81-13-747, 318-81-13-748, 318-81-13-749, 318-81-13-750, 318-81-13-751, 318-81-13-752, 318-81-13-753, 318-81-13-754, 318-81-13-755, 318-81-13-756, 318-81-13-757, 318-81-13-758, 318-81-13-759, 318-81-13-7