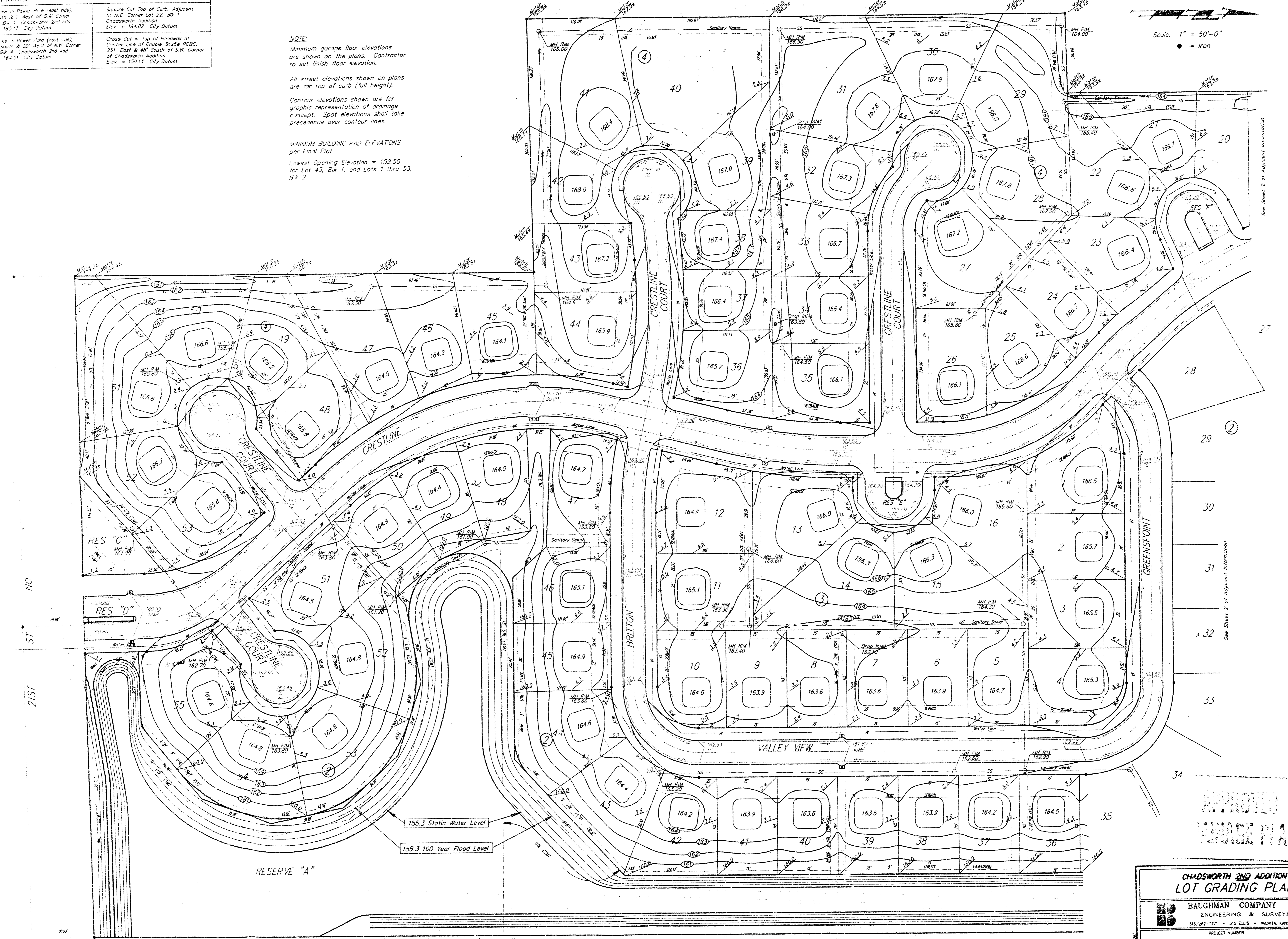


BENCH MARKS	
40 Spike in Power Pole (east side)	Square Cut Top of Curb, Adjacent to N.E. Corner Lot 22, Bk 1, Chadsworth Addition
40 South 2' West of S.W. Corner of 41 Bk 4, Chadsworth 2nd Add.	City Datum
40 Spike in Power Pole (east side)	Cross Cut in Top of Headwall at Center Line of Double 3/4" x 2" R.C.B.C., 25' East & 48' South of S.W. Corner of Chadsworth Addition
41 S. 1' Bk 1, Chadsworth 2nd Add.	City Datum
41 Spike in Power Pole (east side)	City Datum

NOTE:
 Minimum garage floor elevations are shown on the plans. Contractor to set finish floor elevation.
 All street elevations shown on plans are for top of curb (full height).
 Contour elevations shown are for graphic representation of drainage concept. Spot elevations shall take precedence over contour lines.
 MINIMUM BUILDING PAD ELEVATIONS per Final Plat
 Lowest Opening Elevation = 159.50 for Lot 45, Bk 1, and Lots 1 thru 55, Bk 2.

Scale: 1" = 50'-0"
 ● = Iron



21ST
ST
NO

See Sheet 2 of Adjacent Information
 20
21
22
23
24
25
26
27
28
29
30
31
32
33
34
35

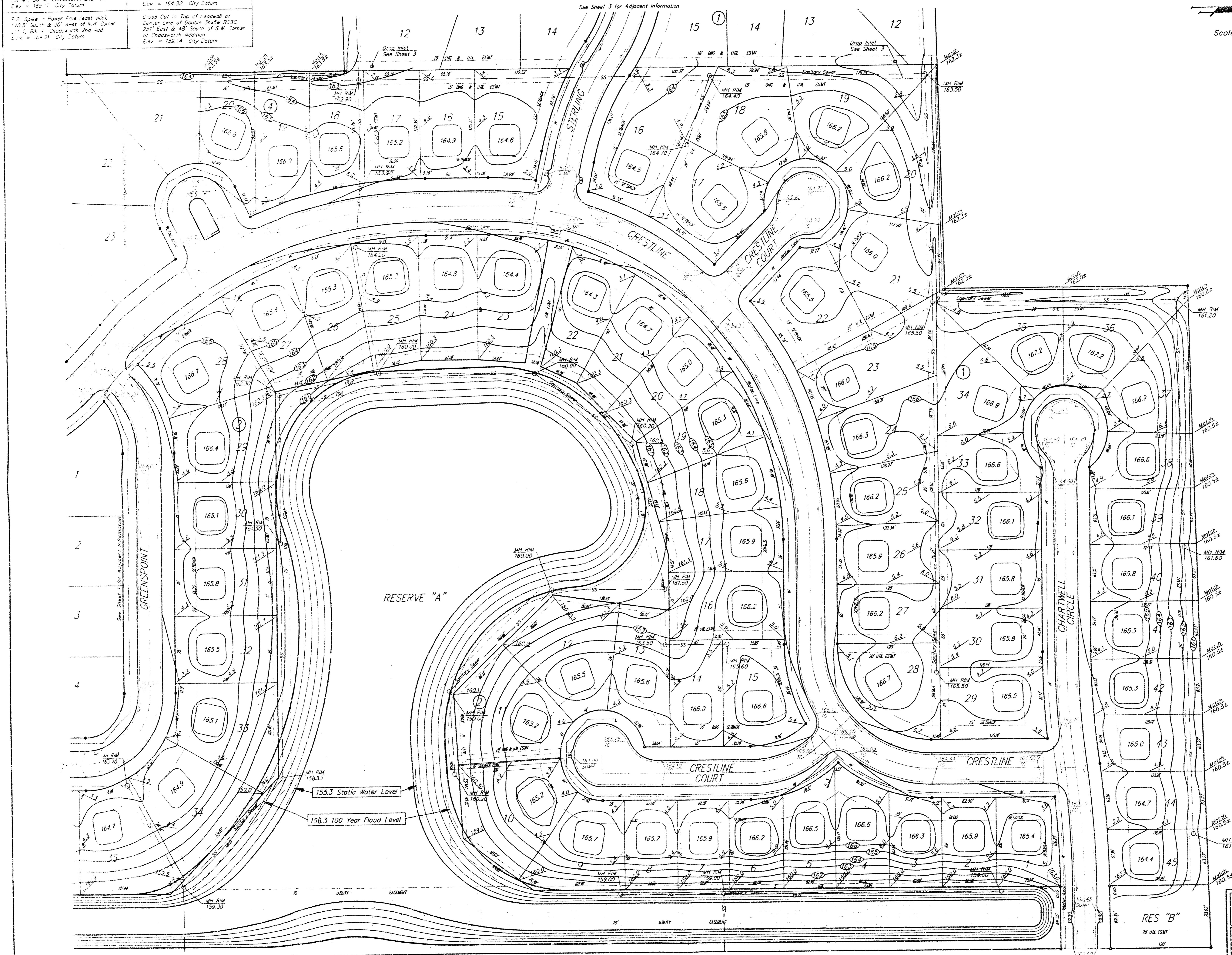
155.3 Static Water Level
 158.3 100 Year Flood Level

CHADSWORTH 2ND ADDITION LOT GRADING PLAN			
BAUGHMAN COMPANY P.A. ENGINEERING & SURVEYING 316/622-271 • 315 ELLIS • MOHAWK, KANSAS 67211			
PROJECT NUMBER			SHEET
			1
DESIGN	DRAWN	CHECKED	DATE
P.J.M.	P.J.M.		11/24/92
SCALE			
1" = 50'-0"			

1043

FILMED FROM THE BEST AVAILABLE COPY....

BENCH MARKS	
BM 1 - Spike - Power Pole (east side), 140' South & 11' West of S.W. Corner of Lot 41, Blk 4, Chadsworth 2nd Add. Elev. = 162.17 City Datum	Square Cut Top of Curb, Adjacent to N.E. Corner Lot 25, Blk 1, Chadsworth Addition. Elev. = 164.92 City Datum
BM 2 - Spike - Power Pole (east side), 140' South & 10' West of N.W. Corner of Lot 11, Blk 1, Chadsworth 2nd Add. Elev. = 162.17 City Datum	Cross Cut in Top of Rearwall of Center Line of Double Inflow Pipe, 251' East & 48' South of S.W. Corner of Chadsworth Addition. Elev. = 159.14 City Datum



Scale: 1" = 50'-0"
 ● = Iron

NOTE:
 Minimum garage floor elevations are shown on the plans. Contractor to set finish floor elevation.
 All street elevations shown on plans are for top of curb (full height).
 Contour elevations shown are for graphic representation of drainage concept. Spot elevations shall take precedence over contour lines.
 MINIMUM BUILDING PAD ELEVATIONS per Final Plat
 Lowest Opening Elevation = 159.50 for Lot 45, Blk 1, and Lots 1 thru 35, Blk 2.

155.3 Static Water Level
 158.3 100 Year Flood Level

**CHADSWORTH 2ND ADDITION
 LOT GRADING PLAN**

BAUGHMAN COMPANY P. A.
 ENGINEERING & SURVEYING
 316/262-7271 • 315 ELLIS • WICHITA, KANSAS 67211

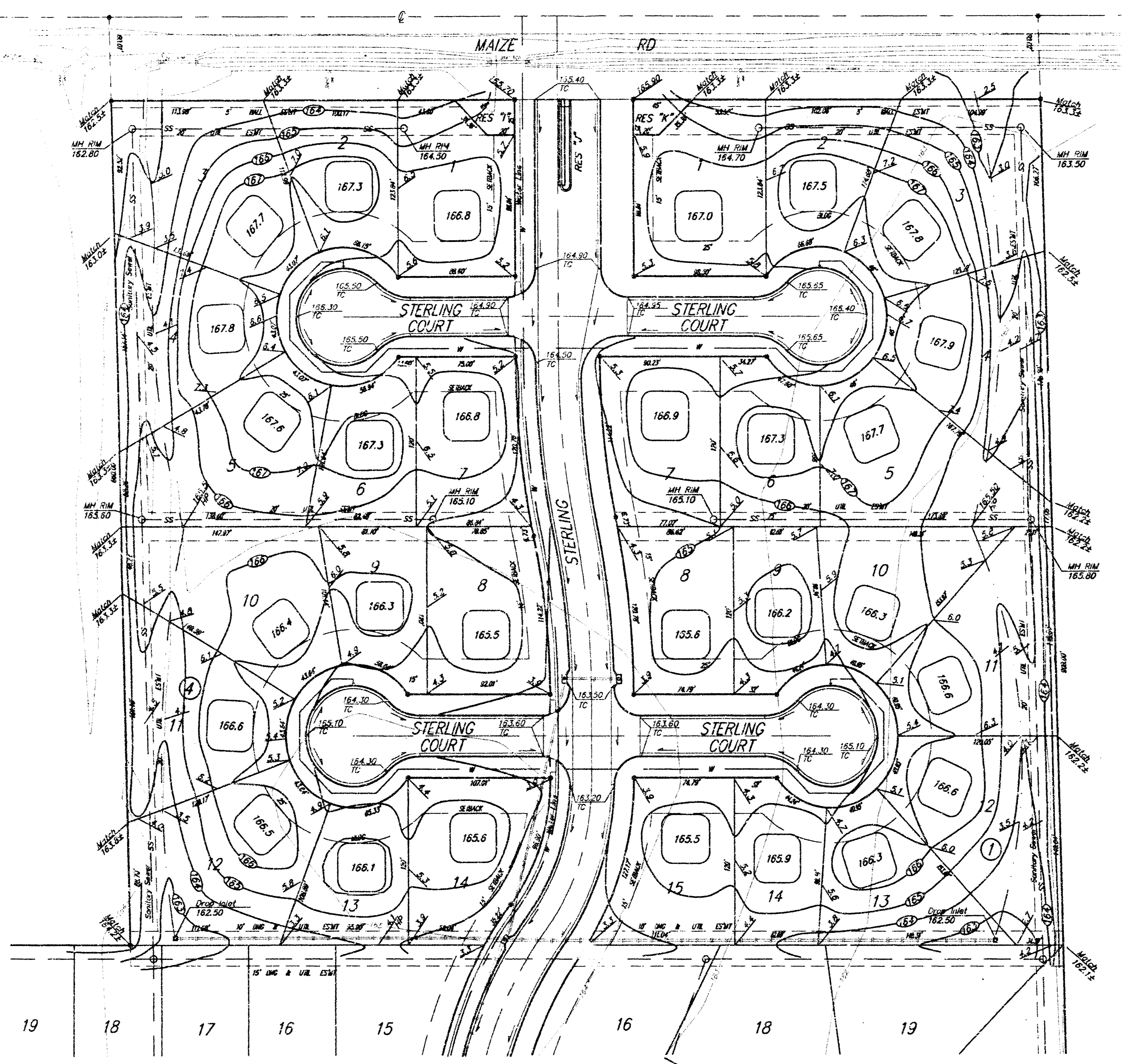
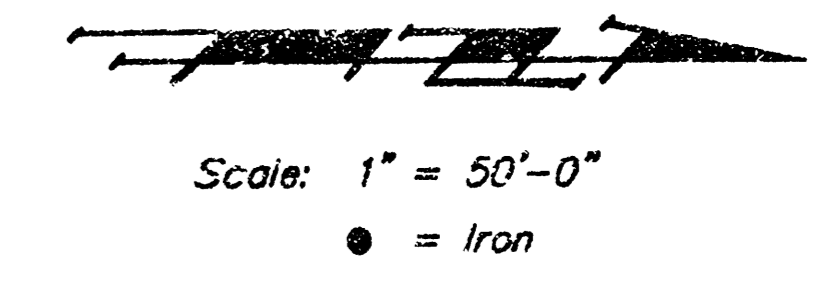
PROJECT NUMBER: _____ SHEET: **2** OF **3**

DESIGN	DRAWN	UTIL. CHECKED	DATE	SCALE
P.J.M.	P.J.M.		Jan 24, 92	1" = 50'-0"

2093

FILMED FROM THE BEST AVAILABLE COPY....

BENCH MARKS:	
P.R. Spike in Power Pole (east side), 48' South & 1' West of S.W. Corner Lot 1, Blk 4, Chadsworth 2nd Add. Elev. = 163.17 City Datum	Square Cut Top of Curb, Adjacent to N.E. Corner Lot 22, Blk 1 Chadsworth Addition Elev. = 154.82 City Datum
P.R. Spike in Power Pole (west side), 143.5' South & 20' West of N.W. Corner Lot 1, Blk 4, Chadsworth 2nd Add. Elev. = 164.01 City Datum	Cross Cut in Top of Headwall at Center Line of Double 30x50 RCBC, 231' East & 48' South of S.W. Corner of Chadsworth Addition Elev. = 158.14 City Datum



NOTE:
Minimum garage floor elevations are shown on the plans. Contractor to set finish floor elevation.
All street elevations shown on plans are for top of curb (full height).
Contour elevations shown are for graphic representation of drainage concept. Spot elevations shall take precedence over contour lines.
MINIMUM BUILDING PAD ELEVATIONS per Final Plat
Lowest Opening Elevation = 159.50 for Lot 45, Blk 1, and Lots 1 thru 55, Blk 2.

19 18 17 16 15 16 18 19

See Sheet 2 for Adjacent Information

CHADSWORTH 2ND ADDITION LOT GRADING PLAN			
BAUGHMAN COMPANY P. A. ENGINEERING & SURVEYING 319/262-7271 • 315 ELLIS • WICHITA, KANSAS 67201			
PROJECT NUMBER		SHEET	
		3	
DESIGN	DRAWN	DATE	SCALE
P.L.M.	P.L.M.	JUN 24, 92	1"=50'-0"

FILMED FROM THE BEST AVAILABLE COPY