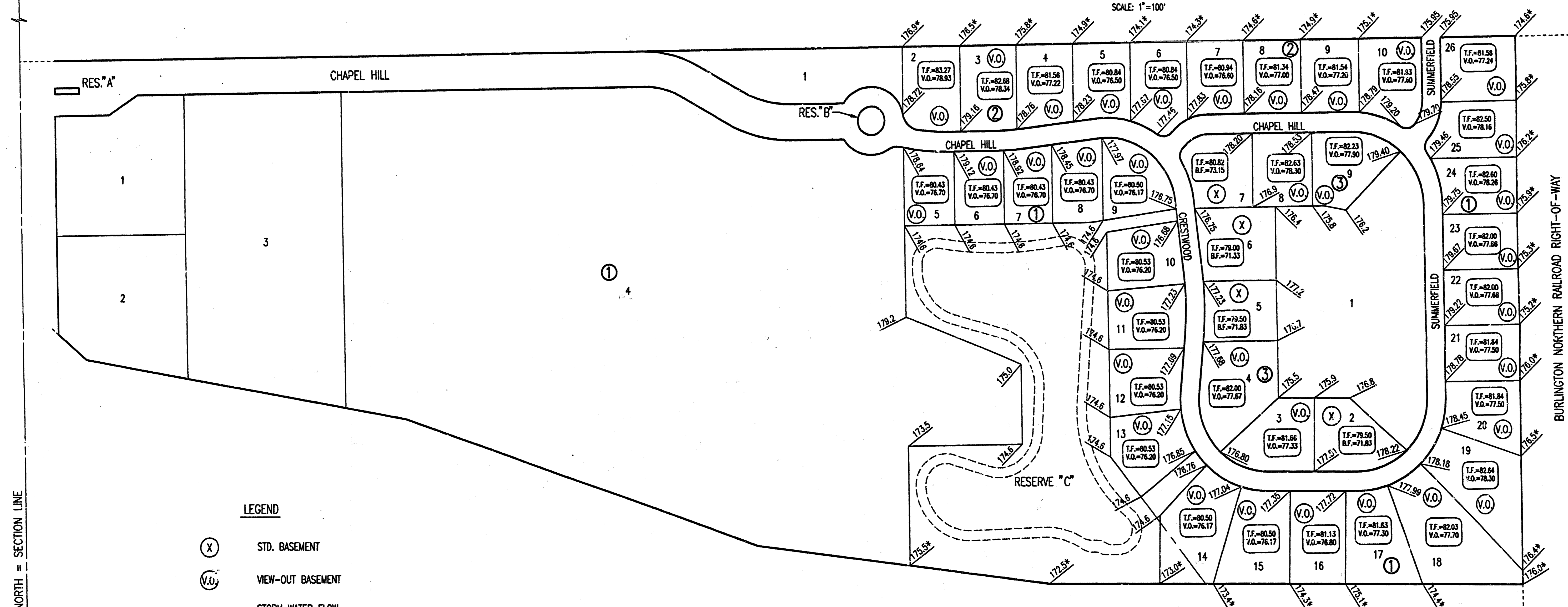


FOUR CORNER PLAN  
 CHAPEL HILL 2ND ADDITION  
 TO WICHITA, SEDGWICK COUNTY, KANSAS

N.W. Corner, S.W. 1/4  
 Sec. 10, T27S, R2E  
 of the 6th P.M.  
 Found R.R. Splice in Post.

S.W. Corner, S.W. 1/4  
 Sec. 10, T27S, R2E  
 of the 6th P.M.  
 Found 3/4" LP.

SCALE: 1"=100'



13TH STREET NORTH = SECTION LINE

- LEGEND**
- (X) STD. BASEMENT
  - (V.O.) VIEW-OUT BASEMENT
  - STORM WATER FLOW
  - 158.0 SPOT ELEVATION
  - 56.0 MATCH EXISTING ELEVATION
  - V.O. VIEW-OUT
  - T.F. TOP OF FOUNDATION
  - B.F. BASEMENT FLOOR

MINIMUM PAD ELEVATION (LOWEST OPENING) AS FOLLOWS:  
 LOTS 4 THROUGH 14 BLOCK 1  
 ELEV = 175.60 CITY DATUM  
 ELEV = 1363.0 N.G.V.D.

K-96 BYPASS

**APPROVED  
 DRAINAGE PLAN**

CHAPEL HILL 2ND

N.E. Corner, S.W. 1/4  
 Sec. 10, T27S, R2E  
 of the 6th P.M.  
 Found 3/4" LP. in  
 Center of Split Stone

DSNR: RNH OPER: SW SCALE: 1"=100.00  
 Q:\2002\02590\LD0 02590.dwg (02590-4) Corner 08-25-2005 01:00:55 pm

S.E. Corner, S.W. 1/4  
 Sec. 10, T27S, R2E  
 of the 6th P.M.  
 Found Lead Plug

1st Revision 08-25-05