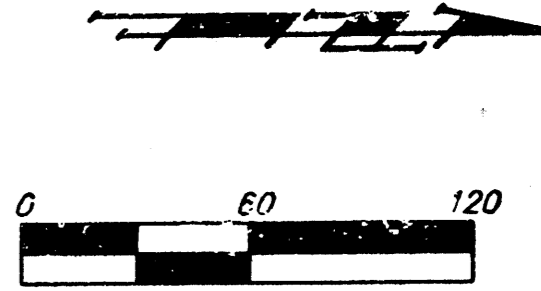


BENCHMARKS:

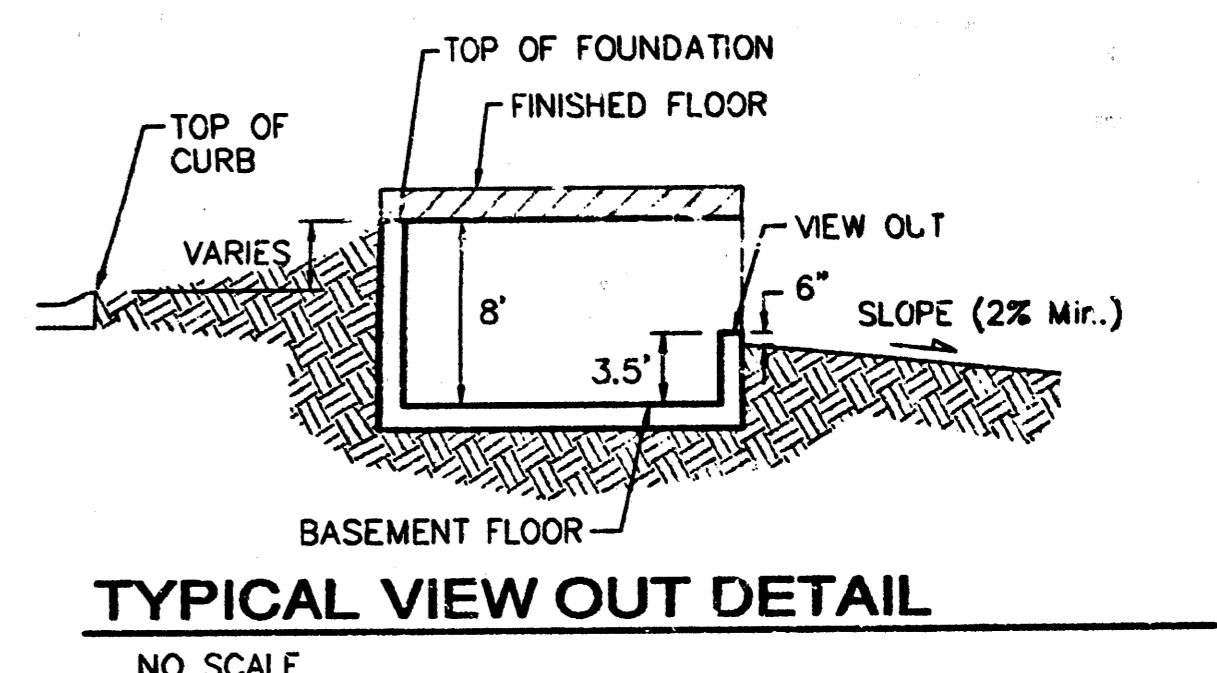
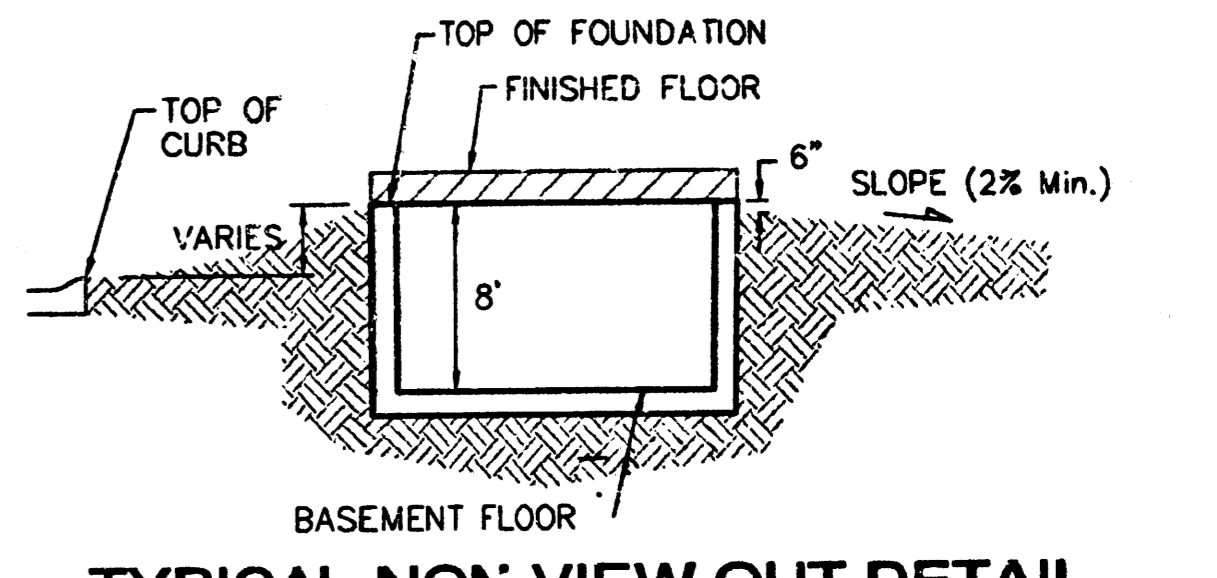
BM #1: C.O.W. disc at SW corner of intersection.
 30.00'± S. of CL of 13th St. N. 35.00'±
 W. of CL of 135th St. W.
 Elev. = 168.25 City Datum

BM #2: Small RR spike in 4th HLP W. of 135th St. W. on south side of 13th St. N. (N. face of HLP).
 Elev. = 179.24 City Datum

BM #3: RR spike in Power Pole. 1321.65
 W. of 135th St. W.
 30' N. of 13th St. N.
 Elev. = 178.45 City Datum



MINIMUM BUILDING PAD ELEVATIONS FOR LOWEST OPENING TO THE STRUCTURES		
LOT	BLOCK	ELEVATION
		CITY DATUM
2-11, 13-21	F	173.5



NOTES:

Proposed Top of Foundation Elevations Are Shown On Plans. Contractor to Set Finished Floor Elevations.

All Street Elevations Shown on Plans Are for Top of Curb (Full-Height).

This Grading Plan is Designed with View-Outs. Elevations Shown as XXX V.O. indicate View-Out structure elevation.

Lot dimensions have been omitted on this plan, refer to the recorded plat for this information.

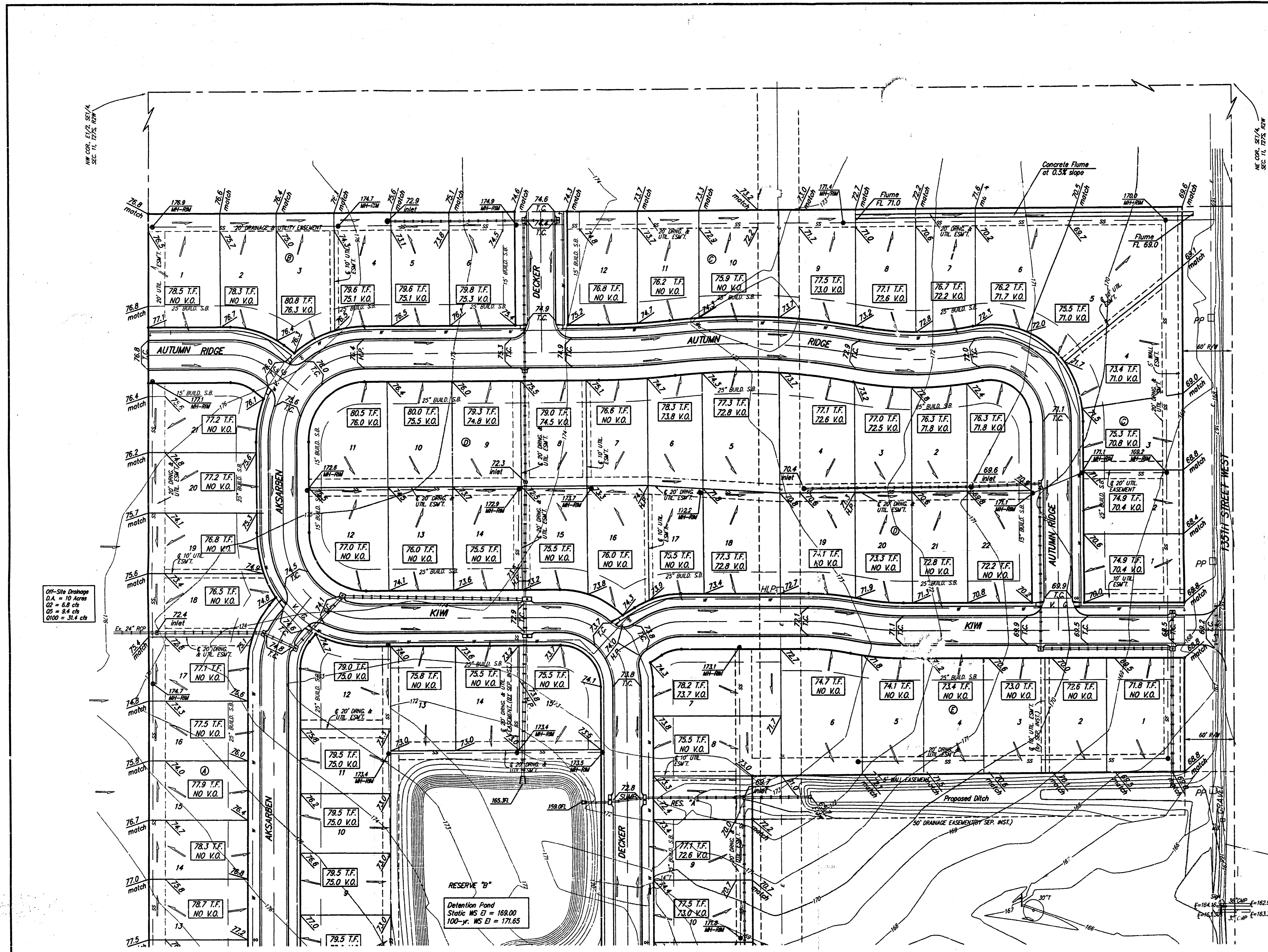
Add 100 to finish grade elevations indicated to achieve city datum elevation. Existing grade elevations are in city datum.

APPROVED DRAINAGE PLAN

Submitted 2/21/06

Baughman		Copper Gate North Addition Grading Plan	
Wichita, Sedgewick County, Kansas		Wichita, Sedgewick County, Kansas	
Baughman Company, P.A. 315 Elm St. Wichita, KS 67211 P 316-265-2771 F 316-265-0199			
ENGINEERING SURVEYING PLANNING LANDSCAPE ARCHITECTURE			
PROJECT NUMBER	DESIGN	DRAWN	JAK
REVISIONS:	12.21.05	JAK	APPROVED
	2.15.06	JAK	DATE
			9/06/05
			SCALE
			1" = 60'
			SHEET
			1 OF 2

F:\Grade\Copper Gate North\Grade.dwg

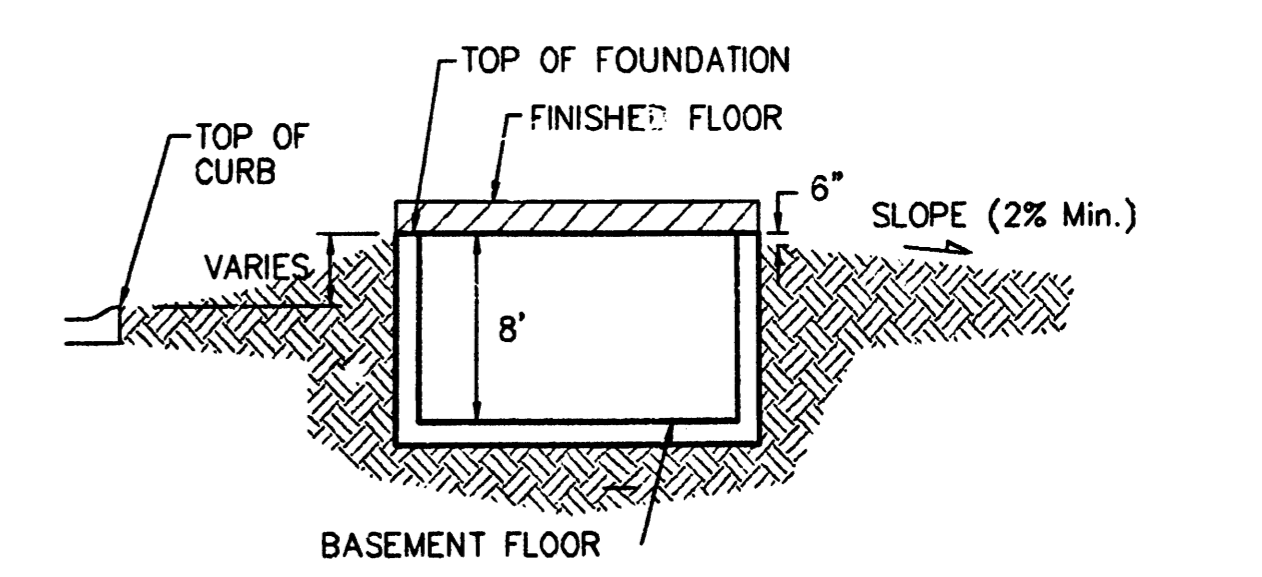
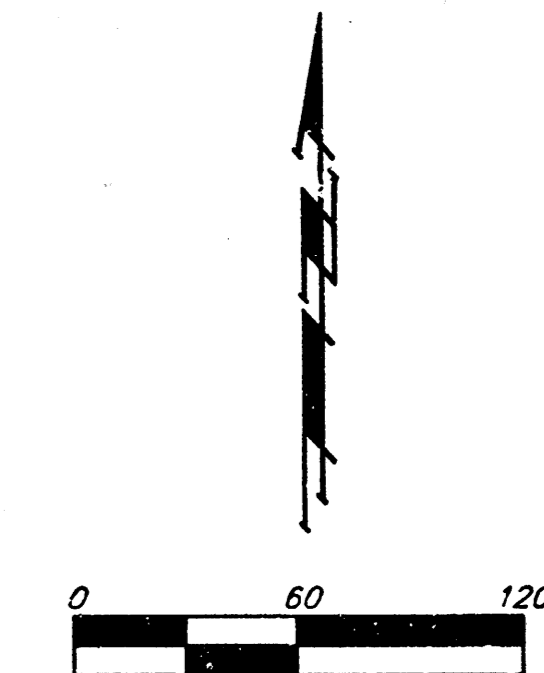


BENCHMARKS:

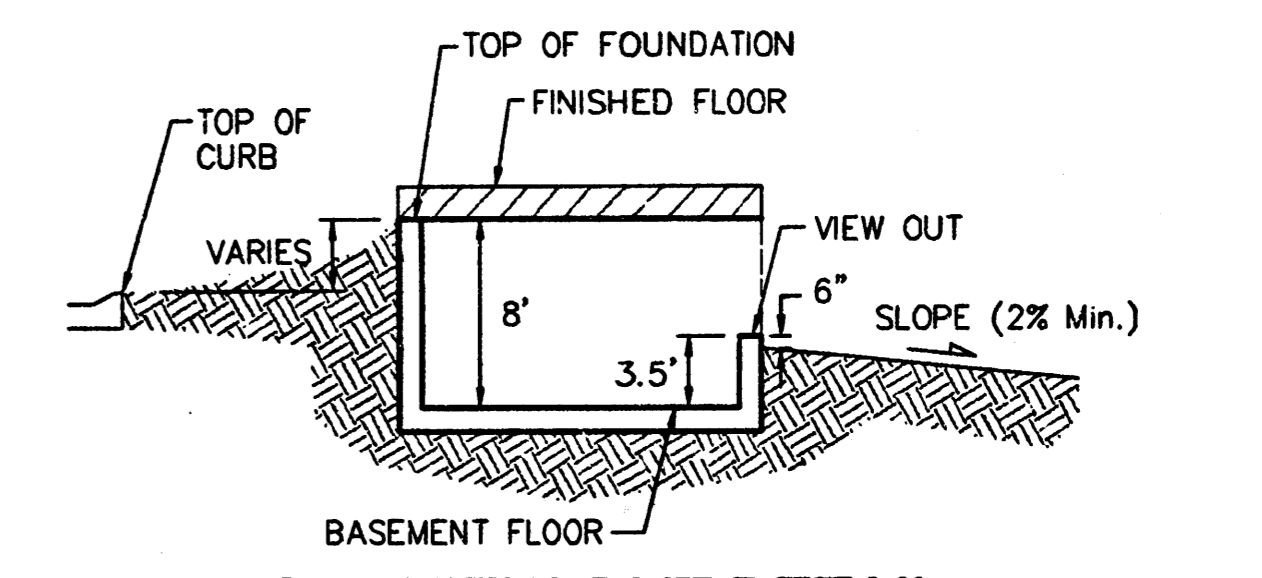
BM #1: C.O.W. disc at SW corner of intersection.
 30.00'± S. of Cl. of 13th St. N. 35.00'±
 W. of Cl. of 135th St. W.
 Elev. = 169.25 City Datum

BM #2: Small RR spike in 4th HLP W. of 135th St. W. on south side of 13th St. N. (N. face of HLP).
 Elev. = 179.24 City Datum

BM #3: RR spike in Power Pole. 1321.65
 W. of 135th St. W.
 30' N. of 13th St. N.
 Elev. = 178.45 City Datum



TYPICAL NON-VIEW OUT DETAIL
 NO SCALE



TYPICAL VIEW OUT DETAIL
 NO SCALE

NOTES:

Proposed Top of Foundation Elevations Are Shown On Plans. Contractor to Set Finished Floor Elevations.

All Street Elevations Shown on Plans Are for Top of Curb (Full-Height).

This Grading Plan is Designed with View-Outs. Elevations Shown as XX.X V.O. Indicate View-Out structure elevation.

Lot dimensions have been omitted on this plan, refer to the recorded plat for this information.

Add 100 to finish grade elevations indicated to achieve city datum elevation. Existing grade elevations are in city datum.

**APPROVED
 DRAINAGE PLAN**

MINIMUM BUILDING PAD ELEVATIONS FOR LOWEST OPENING TO THE STRUCTURES

LOT	BLOCK	ELEVATION CITY DATUM
2-11, 13-21	F	173.5

SUBMITTED 2/27/06

Baughman Grading Plan
 Copper Gate North Addition
 Wichita, Sedgwick County, Kansas

Baughman Company, P.A. 315 5th & Walnut, St. 67111 P 316-263-2771 F 316-263-0149
 ENGINEERING | SURVEYING | PLANNING | LANDSCAPE ARCHITECTURE

PROJECT NUMBER	DESIGN	DRAWN
	BLG	JAK
REVISIONS:	APPROVED	DATE
12.21.05 JAK		9/06/05
2.15.06 JAK	SCALE	
	1" = 60'	
	SHEET	
	2 OF 2	

F:\Grade\Copper Gate North\Grading