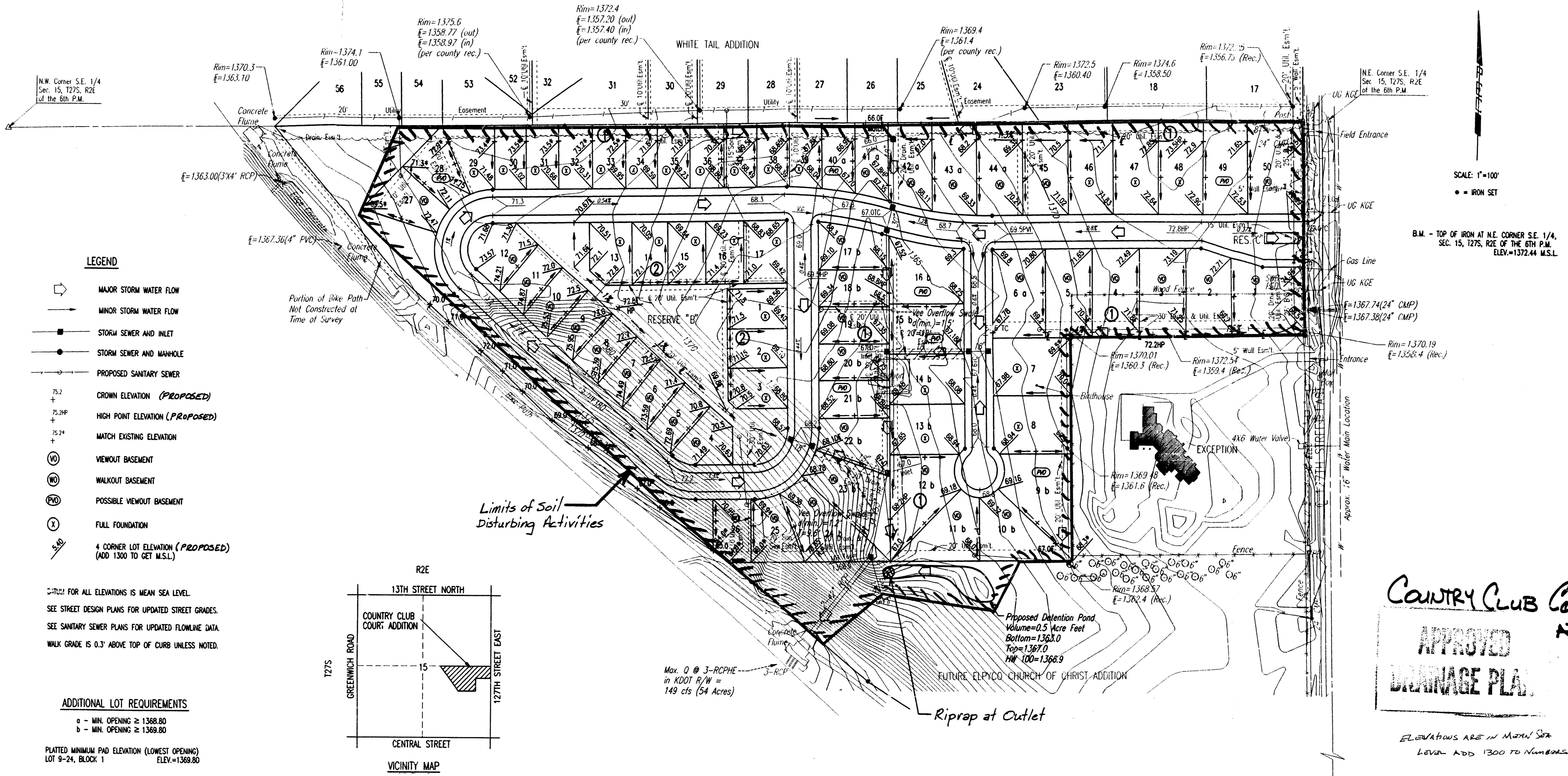


FOUR CORNER LOT GRADING & UTILITY PLAN FOR COUNTRY CLUB COURT ADDITION TO SEDWICK COUNTY, KANSAS



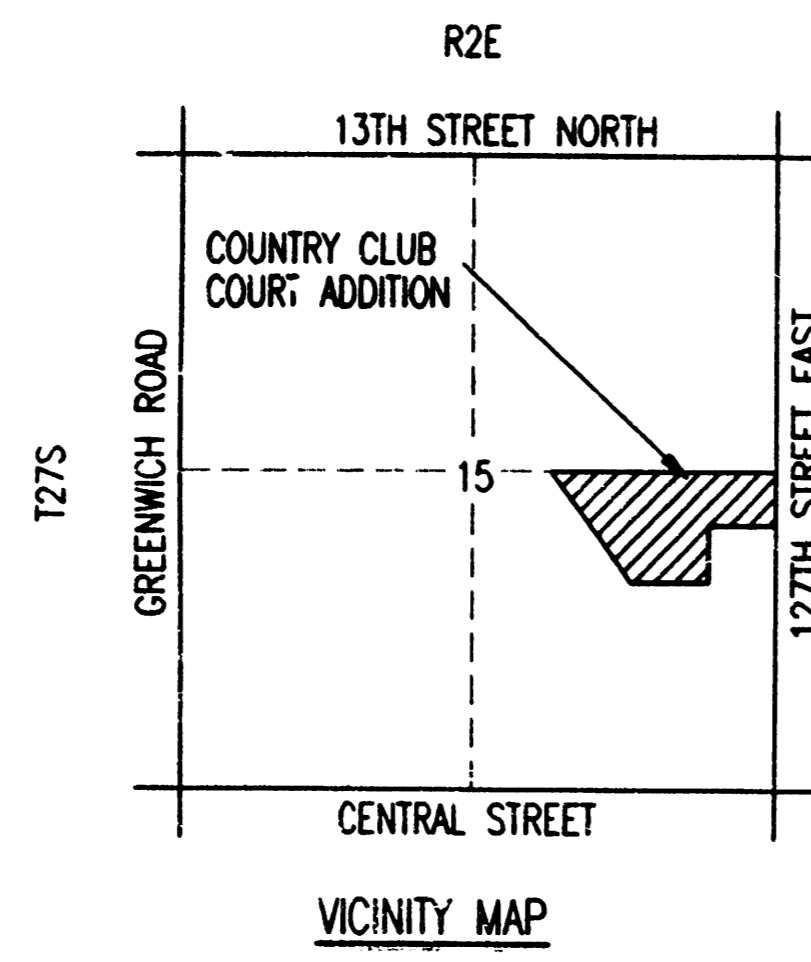
- LEGEND**
- ➔ MAJOR STORM WATER FLOW
 - ➔ MINOR STORM WATER FLOW
 - STORM SEWER AND INLET
 - STORM SEWER AND MANHOLE
 - PROPOSED SANITARY SEWER
 - 75.2 + CROWN ELEVATION (PROPOSED)
 - 75.7HP + HIGH POINT ELEVATION (PROPOSED)
 - 75.24 + MATCH EXISTING ELEVATION
 - (V) VIEWOUT BASEMENT
 - (W) WALKOUT BASEMENT
 - (PD) POSSIBLE VIEWOUT BASEMENT
 - (X) FULL FOUNDATION
 - 4 CORNER LOT ELEVATION (PROPOSED) (ADD 1300 TO GET M.S.L.)

NOTE: FOR ALL ELEVATIONS IS MEAN SEA LEVEL.
SEE STREET DESIGN PLANS FOR UPDATED STREET GRADES.
SEE SANITARY SEWER PLANS FOR UPDATED FLOWLINE DATA.
WALK GRADE IS 0.3' ABOVE TOP OF CURB UNLESS NOTED.

ADDITIONAL LOT REQUIREMENTS

- a - MIN. OPENING ≥ 1368.80
- b - MIN. OPENING ≥ 1369.80

PLATED MINIMUM PAD ELEVATION (LOWEST OPENING)
LOT 9-24, BLOCK 1 ELEV.=1369.80



1. Inlet Protection to be provided at all SWS Inlets
2. Silt Fence to be installed on sloped surfaces.

**COUNTRY CLUB COURT
ADDN.**

**APPROVED
DRAINAGE PLAN**

ELEVATIONS ARE IN MEAN SEA
LEVEL ADD 1300 TO NUMBERS!

NPDES - **AH.3**

REVISED 12/17/97
REVISED 9/8/97
REVISED 7/31/97

DSMP, GDD, OPR, DMR, SCALE: 1"=100.00' 02/20/13 pm
03/19/97 197262, VCCORNER 02-09-1996