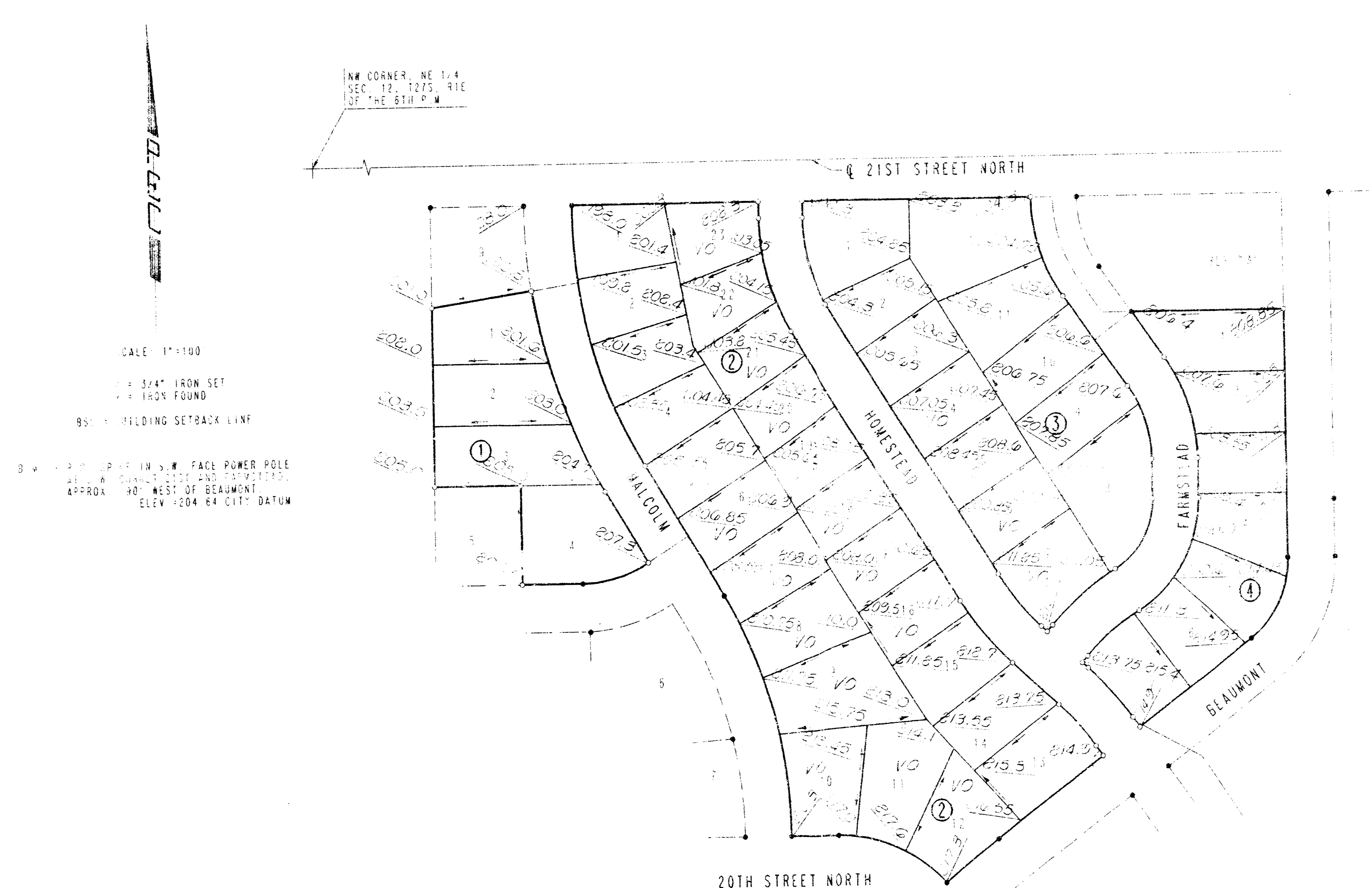


FOURTH ADDITION TO CRESTVIEW HEIGHTS
TO WICHITA, SEDGWICK COUNTY, KANSAS



SCALE 1"=100'
 1/4" 3/4" IRON SET
 1/4" IRON FOUND
 95' 1" HOLDING SETBACK LINE
 3" 4" 6" 8" IN S.W. FACE POWER POLE
 APPROX. 90' WEST OF BEAUMONT
 ELEV. 204.84 CITY DATUM

NW CORNER, NE 1/4
 SEC. 12, T27S, R1E
 OF THE 6TH P.M.

**APPROVED
 DRAINAGE PLAN**

Crestview Heights 4th

DETAILED DRAINAGE PLAN

PLAT CARD 7-26325 15 Nov 193

FILMED FROM THE BEST
 AVAILABLE COPY