

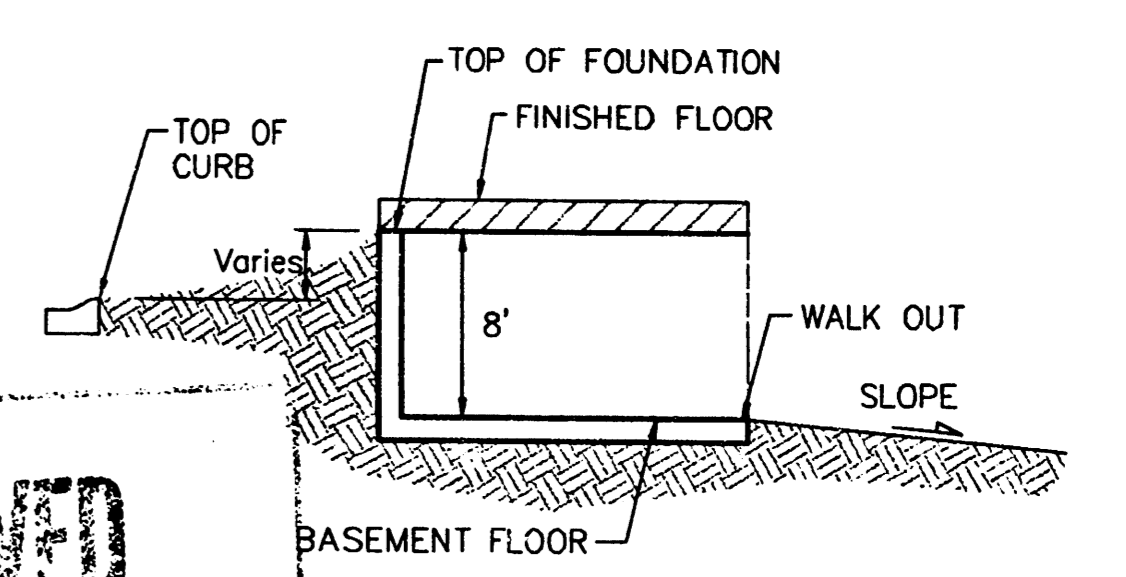
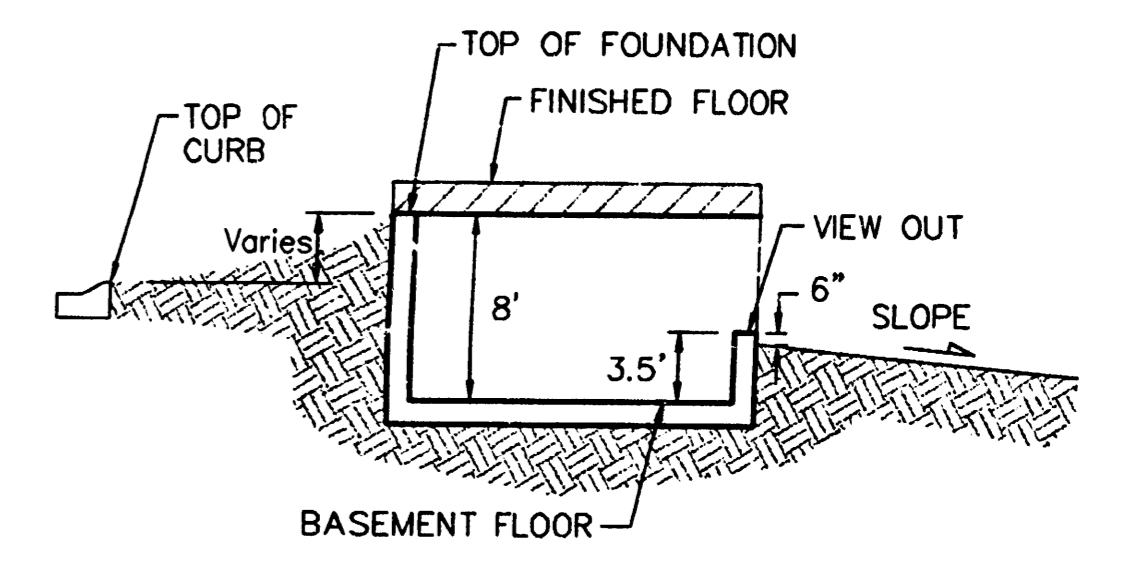
POND DATA:
 STATIC POND ELEVATION: 201.0 City Datum
 BOTTOM ELEVATION: 191.0 City Datum
 100 YEAR DESIGN WATER SURFACE: 201.0 City Datum

KOCH INDUSTRIES, INC
 4320 E. 37TH ST. N.
 WICHITA, KS 67220

SCALE: 1" = 60'
 • = IRON

| LOT | BLOCK | ELEVATION | |
|--------------|-------|------------|--------|
| | | CITY DATUM | NGVD |
| 37-39, 41-44 | A | 205.0 | 1392.4 |
| 28-40, 43-46 | C | 201.0 | 1388.4 |
| 2 | D | 207.0 | 1394.4 |
| 3 | D | 206.0 | 1393.4 |
| 5 | D | 204.0 | 1391.4 |
| 6 | D | 203.0 | 1390.4 |
| 7 | D | 202.5 | 1389.9 |
| 8 | D | 201.5 | 1388.9 |
| 9 | D | 201.0 | 1388.4 |
| 10-11 | D | 200.5 | 1387.9 |
| 12 | D | 198.0 | 1385.4 |
| 13-17 | D | 196.5 | 1383.9 |
| 1 | E | 196.5 | 1383.9 |
| 2 | E | 200.5 | 1387.9 |
| 3 | E | 202.5 | 1389.9 |
| 4 | E | 206.0 | 1393.4 |

* EXTRA DEEP FOUNDATION MAY BE REQUIRED



APPROVED DRAINAGE PLAN

REVISED 11/21/02 BY BOT
 REVISED 10/18/02 BY AEG
 REVISED 2/18/02 BY AEG

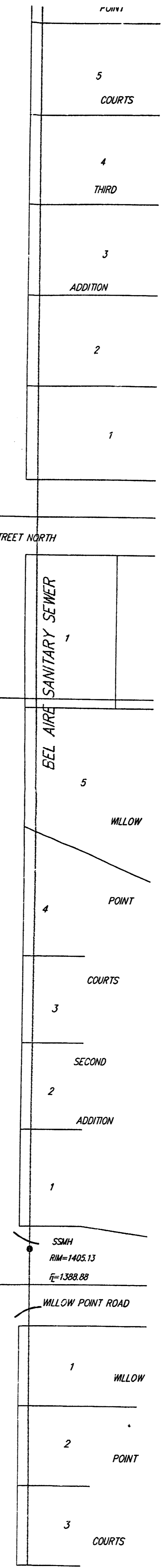
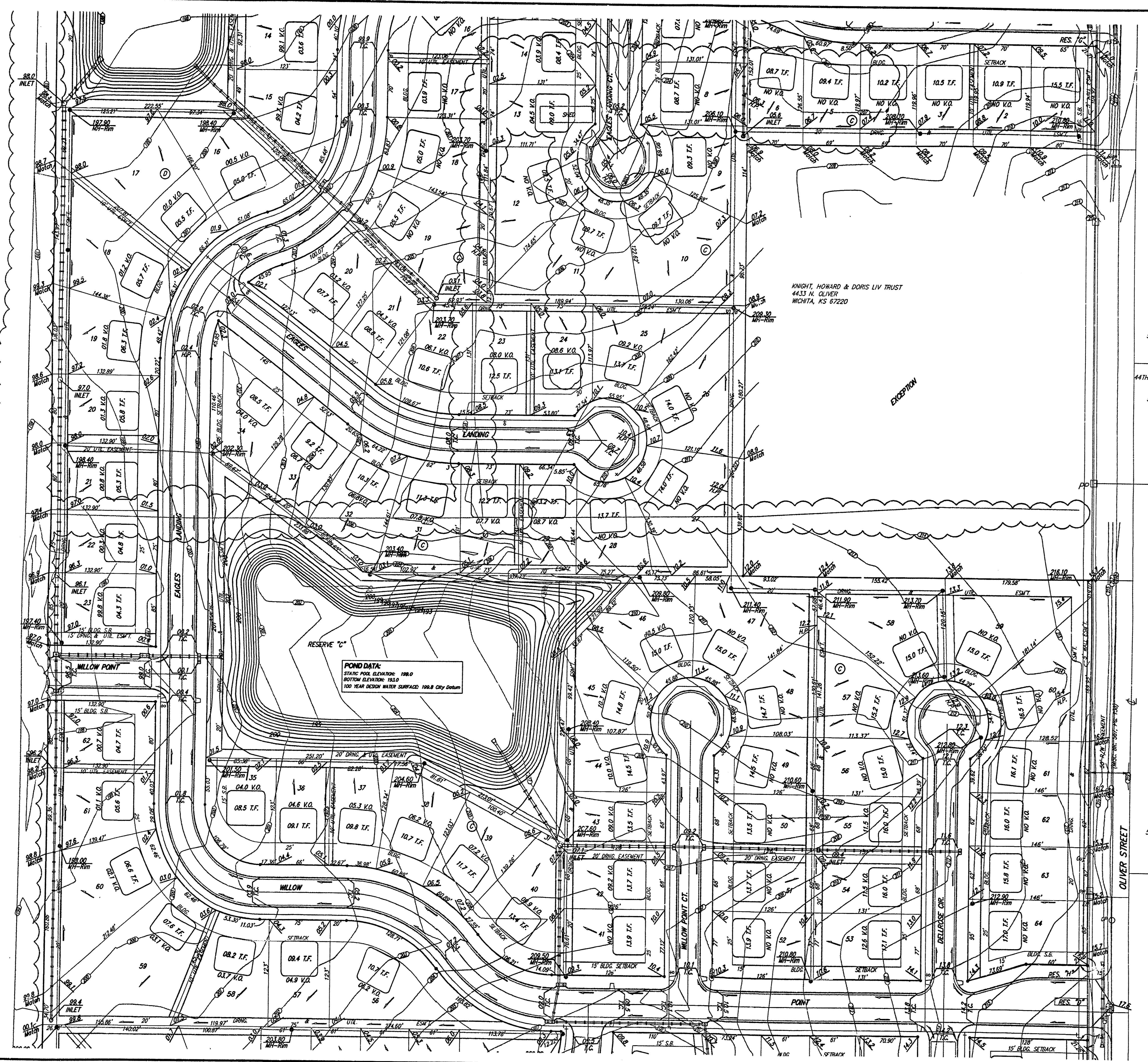
EAGLES LANDING AT NORTH OLIVER 2ND GRADING PLAN
 WICHITA, KANSAS, SEDGWICK COUNTY, KANSAS

BAUCHE COMPANY P.A.
 ENGINEERING, SURVEYING, & PLANNING
 316-282-7271 • 315 ELLIS • WICHITA, KANSAS 67211

| | | | | |
|--------|-------|----------|--------|----------|
| DESIGN | DRAWN | APPROVED | DATE | SCALE |
| | JAK | | 1/4/01 | 1" = 60' |

PROJECT NUMBER: _____ SHEET: **1** OF **3**

KOCH INDUSTRIES, INC.
4401 E. 45TH ST., N.
WICHITA, KS 67220

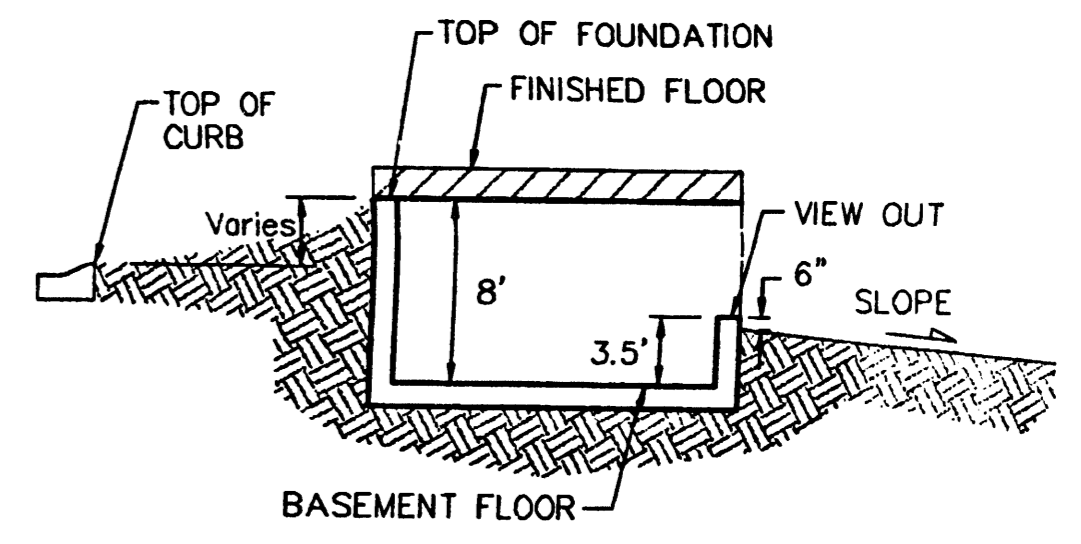


SCALE: 1" = 60'
• = IRON

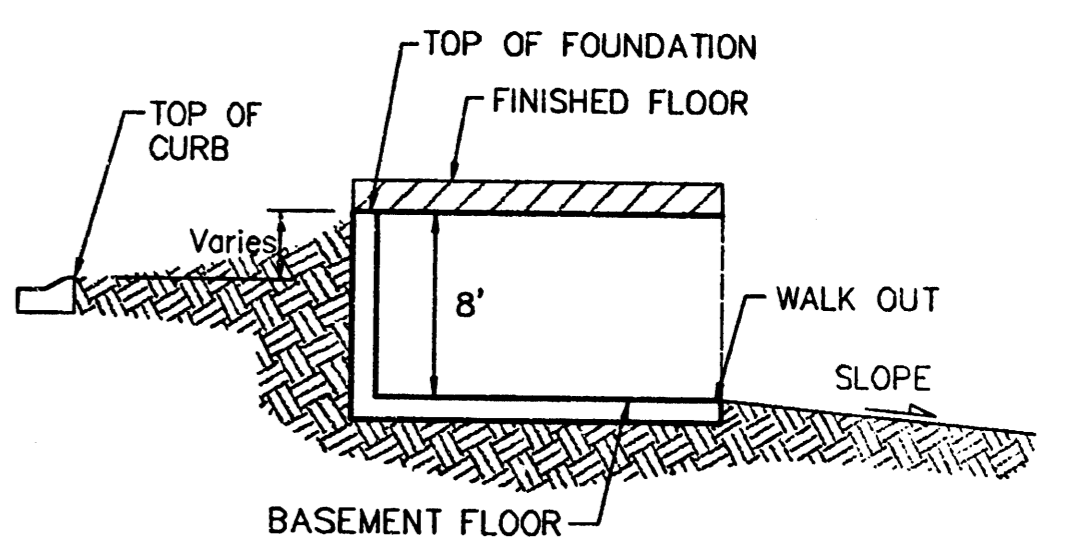
MINIMUM BUILDING PAD ELEVATIONS FOR LOWEST OPENING TO THE STRUCTURES

| LOT | BLOCK | ELEVATION | |
|--------------|-------|------------|--------|
| | | CITY DATUM | NGVD |
| 37-39, 41-44 | A | 205.0 | 1392.4 |
| 28-40, 43-46 | C | 201.0 | 1389.4 |
| 2 | D | 207.0 | 1394.4 |
| 3 | D | 206.0 | 1393.4 |
| 5 | D | 204.0 | 1391.4 |
| 6 | D | 203.0 | 1390.4 |
| 7 | D | 202.5 | 1389.9 |
| 8 | D | 201.5 | 1388.9 |
| 9 | D | 201.0 | 1388.4 |
| 10-11 | D | 200.5 | 1387.9 |
| 12 | D | 198.0 | 1385.4 |
| 13-17 | D | 196.5 | 1383.9 |
| 1 | E | 196.5 | 1383.9 |
| 2 | E | 200.5 | 1387.9 |
| 3 | E | 202.5 | 1389.9 |
| 4 | E | 206.0 | 1393.4 |

* EXTRA DEEP FOUNDATION MAY BE REQUIRED



TYPICAL VIEW OUT
NO SCALE



TYPICAL WALK OUT
NO SCALE

REVISED 10/8/02 BY AEG
REVISED 2/18/02 BY AEG

EAGLES LANDING AT NORTH OLIVER 2ND
GRADING PLAN
WICHITA, KANSAS, SEDGWICK COUNTY, KANSAS

BAUGHMAN COMPANY P.A.
ENGINEERING, SURVEYING, & PLANNING
316-782-7271 • 315 ELLIS • WICHITA, KANSAS 67211

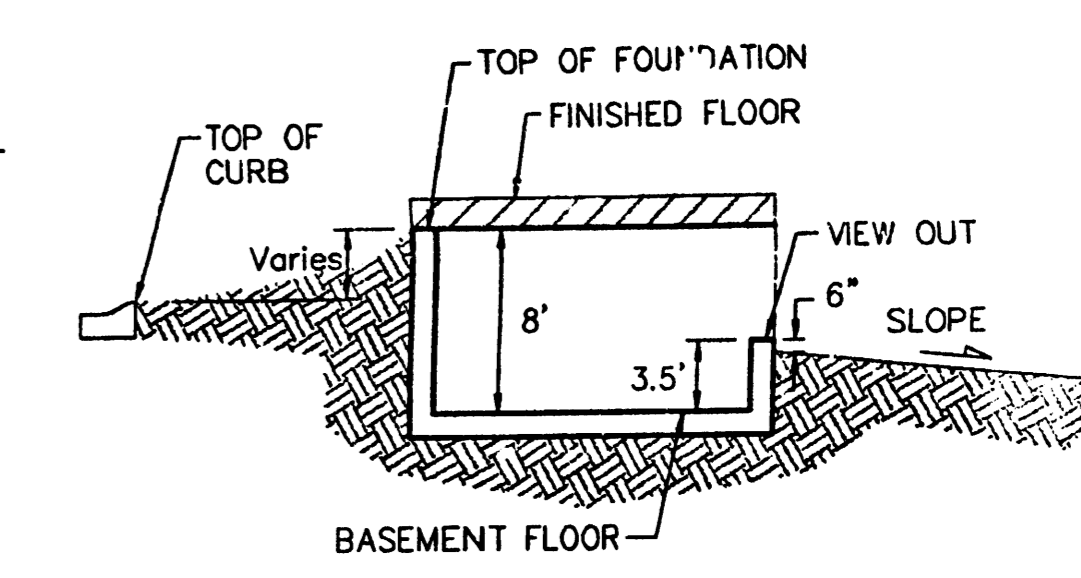
PROJECT NUMBER: _____ SHEET: **2** OF **3**

DESIGN: _____ DRAWN: JAK APPROVED: _____ DATE: 1/4/01 SCALE: 1" = 60'

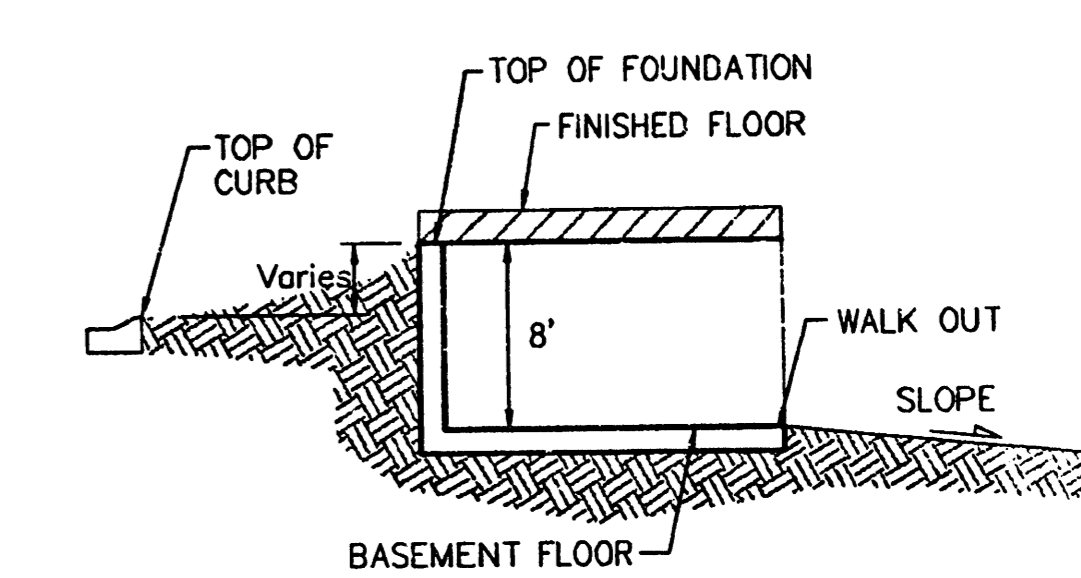
SCALE: 1" = 60'
 • = IRON

| LOT | BLOCK | ELEVATION | |
|--------------|-------|------------|--------|
| | | CITY DATUM | NGVD |
| 37-39, 41-44 | A | 205.0 | 1392.4 |
| 28-40, 43-46 | C | 201.0 | 1388.4 |
| 2 | D | 207.0 | 1394.4 |
| 3 | D | 206.0 | 1393.4 |
| 5 | D | 204.0 | 1391.4 |
| 6 | D | 203.0 | 1390.4 |
| 7 | D | 202.5 | 1389.9 |
| 8 | D | 201.5 | 1388.9 |
| 9 | D | 201.0 | 1388.4 |
| 10-11 | D | 200.5 | 1387.9 |
| 12 | D | 198.0 | 1385.4 |
| 13-17 | D | 196.5 | 1383.9 |
| 1 | E | 196.5 | 1383.9 |
| 2 | E | 200.5 | 1387.9 |
| 3 | E | 202.5 | 1389.9 |
| 4 | E | 206.0 | 1393.4 |

POND DATA:
 FINISH POND ELEVATION: 183.5 City Datum
 BOTTOM ELEVATION: 188.0 City Datum
 100 YEAR DESIGN WIND SURFAGE: 184.5 City Datum



TYPICAL VIEW OUT
 NO SCALE



TYPICAL WALK OUT
 NO SCALE

REVISED 10/9/02 BY AEG
 REVISED 2/16/02 BY AEG

EAGLES LANDING AT NORTH OLIVER 2ND
GRADING PLAN
 WICHITA, KANSAS, SEDGWICK COUNTY, KANSAS

BAUGHMAN COMPANY P.A.
 ENGINEERING, SURVEYING, & PLANNING
 316-262-7271 • 315 ELLIS • WICHITA, KANSAS 67211

PROJECT NUMBER: _____ SHEET: **3**

| | | | | |
|--------|-------|----------|--------|----------|
| DESIGN | DRAWN | APPROVED | DATE | SCALE |
| | JAK | | 1/4/01 | 1" = 60' |

KOCH INDUSTRIES, INC.
 401 E. 45TH ST. N.
 WICHITA, KS 67220

KNIGHT, HOWARD & DORIS LIV TRUST
 4433 N. OLIVER
 WICHITA, KS 67220

EXCEPTION

