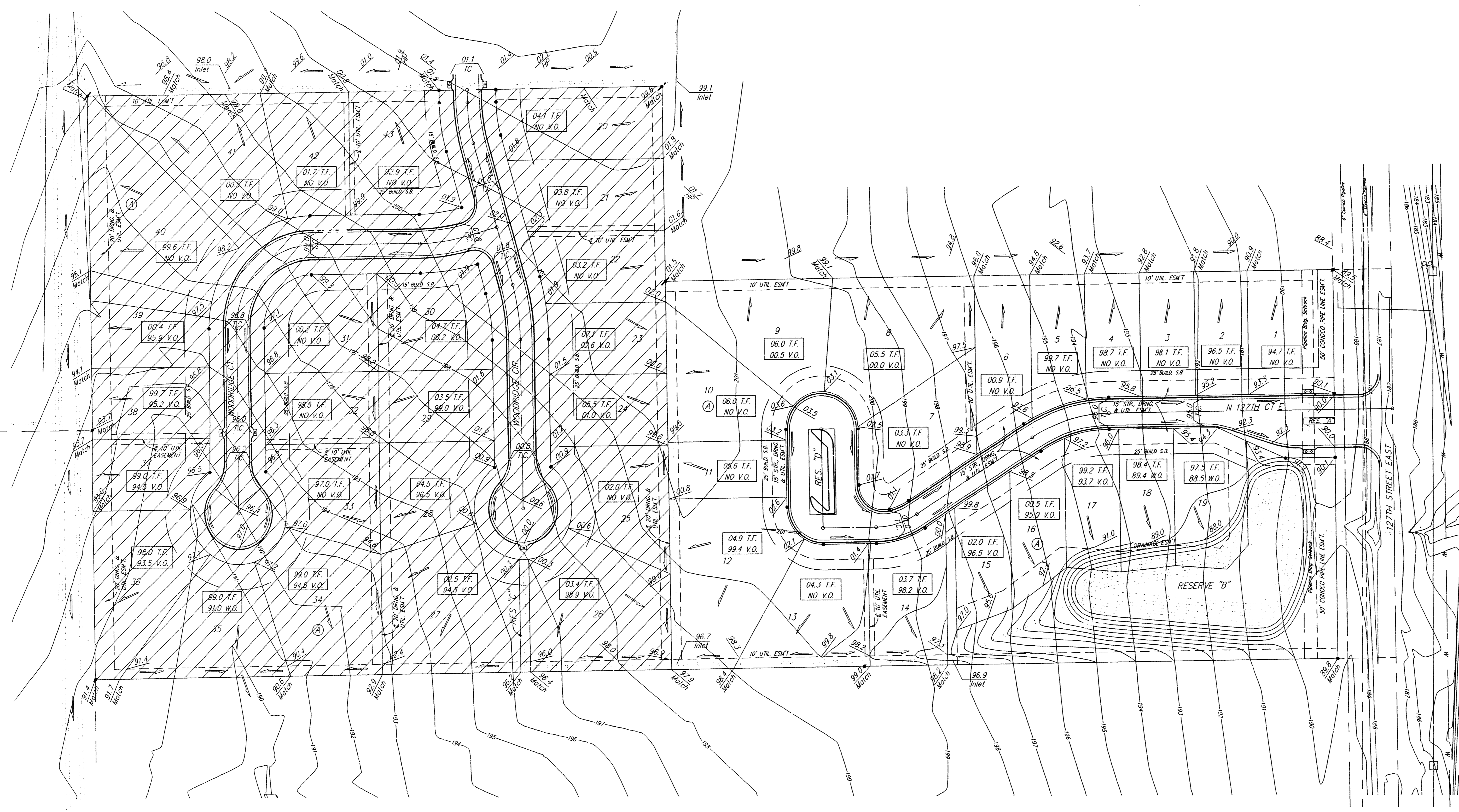


NOTES:

1. PROPOSED TOP OF FOUNDATION ELEVATIONS ARE SHOWN ON PLANS. CONTRACTOR TO SET FINISHED FLOOR AND GARAGE FLOOR ELEVATIONS. ALL STREET ELEVATIONS SHOWN ON PLANS ARE FOR TOP OF CURB (FULL-HEIGHT).
2. THIS GRADING PLAN IS DESIGNED WITH VIEW-OUTS AND WALK-OUTS. ELEVATIONS SHOWN AS X.X X.V.O. DEPICT VIEW-OUT STRUCTURES. ELEVATIONS SHOWN AS X.X X.W.O. DEPICT WALK-OUT STRUCTURES.
3. ALL LOTS SHALL MEET MINIMUM PAD REQUIREMENT AS SHOWN ON THE RECORDED PLAT.
4. LOT DIMENSIONS HAVE BEEN OMITTED ON THIS PLAN. REFER TO THE RECORDED PLAT FOR FINAL DIMENSION, EASEMENT, & BUILDING SETBACK INFORMATION.
5. A DRAINAGE PLAN HAS BEEN DEVELOPED FOR THIS SUBMISSION AND IS ON FILE WITH THE CITY OF WICHITA, KANSAS. DRAINAGE INTENT SHALL REMAIN AS DESCRIBED OR AS MODIFIED WITH THE APPROVAL OF THE CITY ENGINEER OF THE CITY OF WICHITA, KANSAS. NO OBSTRUCTIONS WHICH IMPEDE THE FLOW OF THIS DRAINAGE PLAN SHALL BE ALLOWED.
7. ALL ELEVATIONS SHOWN ARE CITY OF WICHITA DATUM.

LOT	BLOCK	ELEVATION	
		CITY DATUM	NGVD29
36-40	A	1,383.9	1,96.5
14-19	A	1,378.5	1,89.1



BENCHMARK:
GREENWICH AND 21ST NORTH
CITY OF WICHITA BENCHMARK DISC
41' SOUTH AND 58' WEST OF IRON CTR. LINE BOTH
17.0' SW OF ASPHALT, 14.2' EAST OF FACE P.P.
17.0' WEST OF FACE P.P.
ELEVATION = 173.98 (CITY DATUM), 1361.38 NGVD

COUNTY "C" CUT, SOUTH HEADWALL
11.2' MILE WEST OF 127TH ST. EAST
ON 37TH STREET NORTH
ELEV = 185.83 (CITY DATUM), 1373.23 NGVD

TOP OF IRON - A COR, SE1/4, SEC. 3,
TWP. 27-S, R-2-E, (27TH ST. EAST &
21ST ST. NORTH)
ELEV = 198.01 (CITY DATUM), 1385.41 NGVD

THE FAIRMONT 3RD ADDITION GRADING PLAN

Baughman
Baughman Company, P.A. 315 E. 15th St., Wichita, KS 67211 P 316-262-7171 F 316-262-0149
ENGINEERING | SURVEYING | PLANNING | LANDSCAPE ARCHITECTURE

PROJECT NUMBER	DESIGN	DRAWN
	BLG	BLG
REVISIONS:	APPROVED	DATE
		30JUNE2005
	SCALE	NOTED
		SHEET
		1 OF 1

F:\HYDRO_V\PROGRADED\DWG