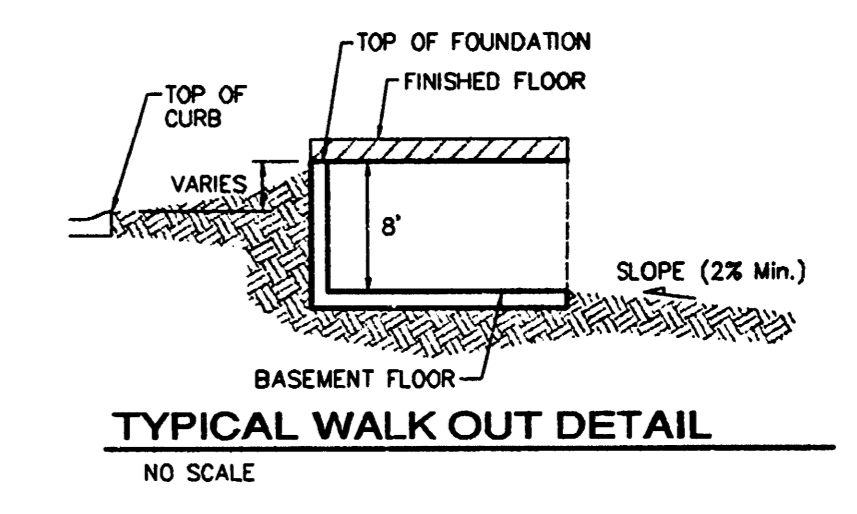
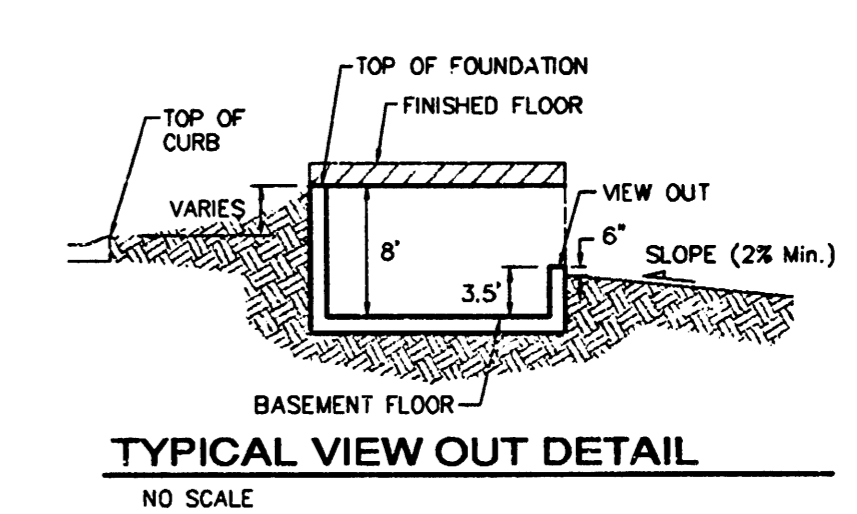
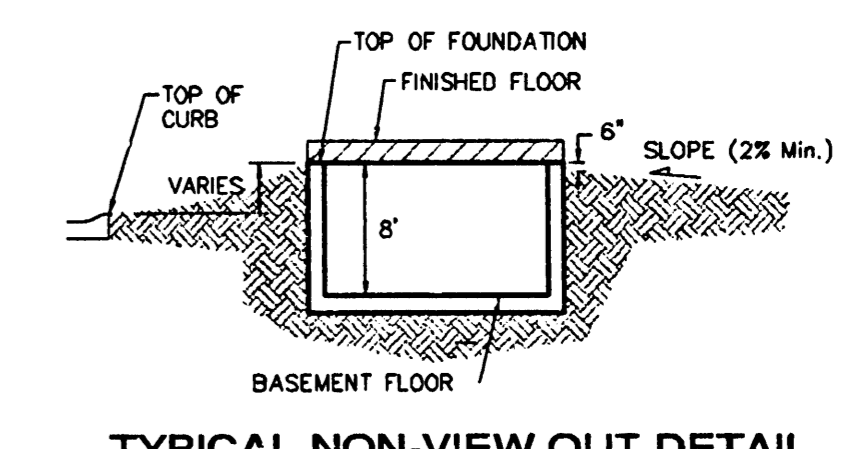
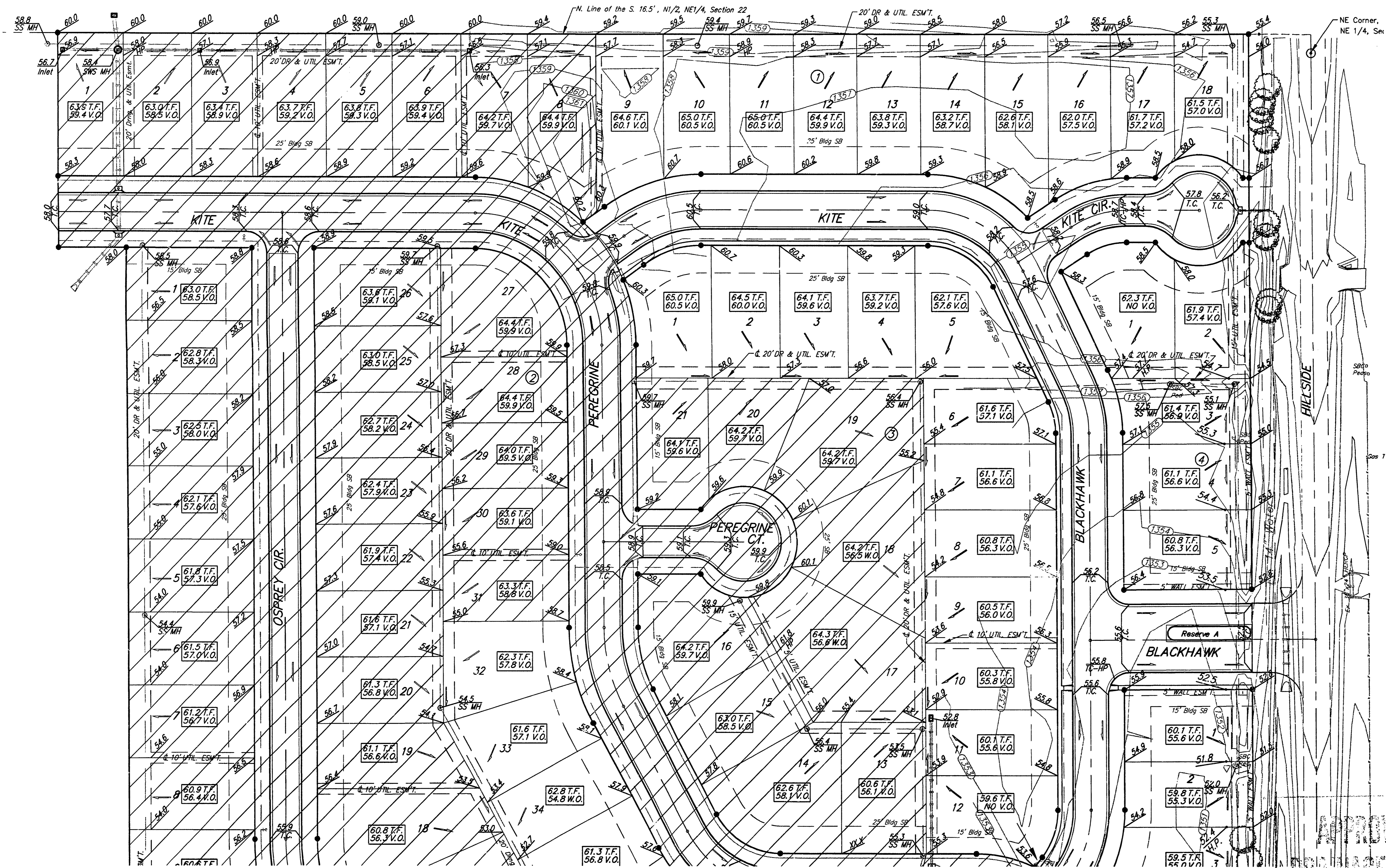
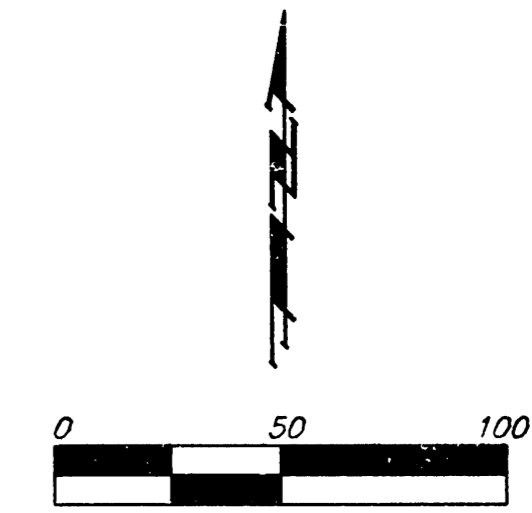


BENCHMARKS
 BM #1: "□" CL face of catch basin, west side of Lot 4, Block 5.
 Elev. = 1352.47 MSL

BM #2: "□" south end of the south curb return at Kite and Peregrine.
 Elev. = 1359.85 MSL

175 EXISTING GRADE
 SHADED PORTIONS REPRESENT AREAS UNREVISED FROM ORIGINAL GRADING DATED 11/20/03 BY POE & ASSOCIATES OF KANSAS, INC.



- NOTES:**
1. PROPOSED TOP OF FOUNDATION ELEVATIONS ARE SHOWN ON PLANS. CONTRACTOR TO SET FINISHED FLOOR AND GARAGE FLOOR ELEVATIONS. ALL STREET ELEVATIONS SHOWN ON PLANS ARE FOR TOP OF CURB (FULL-HEIGHT).
 2. THIS GRADING PLAN IS DESIGNED WITH VIEW-OUTS AND WALK-OUTS. ELEVATIONS SHOWN AS XX.X V.O. DEPICT VIEW-OUT STRUCTURES. ELEVATIONS SHOWN AS XX.X W.O. DEPICT WALK-OUT STRUCTURES.
 3. ALL LOTS SHALL MEET MINIMUM PAD REQUIREMENT AS SHOWN ON THE RECORDED PLAT.
 4. LOT DIMENSIONS HAVE BEEN OMITTED ON THIS PLAN. REFER TO THE RECORDED PLAT FOR FINAL DIMENSION, EASEMENT, & BUILDING SETBACK INFORMATION.
 5. HOUSE PAD ELEVATIONS DEPICTED WITH BOLD OUTLINES WITH TOP OF FOUNDATIONS SHOWN AS XX.X T.F.* INDICATE THAT DEEP FOOTINGS OR DEEP FOUNDATIONS MAY BE REQUIRED.
 6. A DRAINAGE PLAN HAS BEEN DEVELOPED FOR THIS SUBDIVISION AND IS ON FILE WITH THE CITY OF WICHITA, KANSAS. DRAINAGE INTENT SHALL REMAIN AS DEPICTED OR AS MODIFIED WITH THE APPROVAL OF THE CITY ENGINEER OF THE CITY OF WICHITA, KANSAS. NO OBSTRUCTIONS WHICH IMPEDE THE FLOW OF THIS DRAINAGE PLAN SHALL BE ALLOWED.
 7. ALL ELEVATIONS SHOWN ARE M.S.L. DATUM.

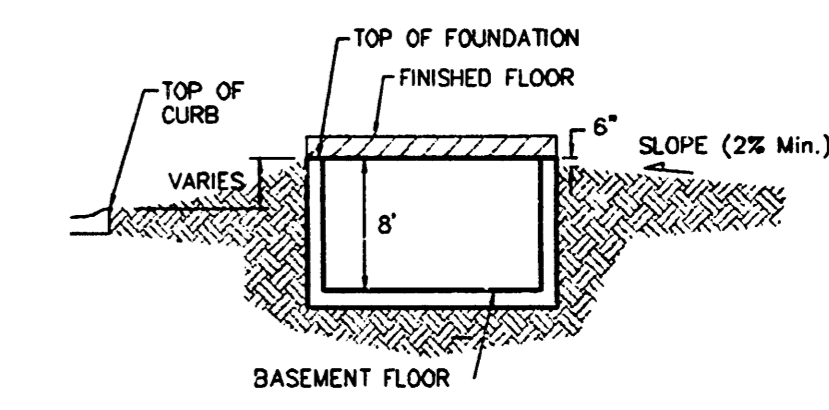
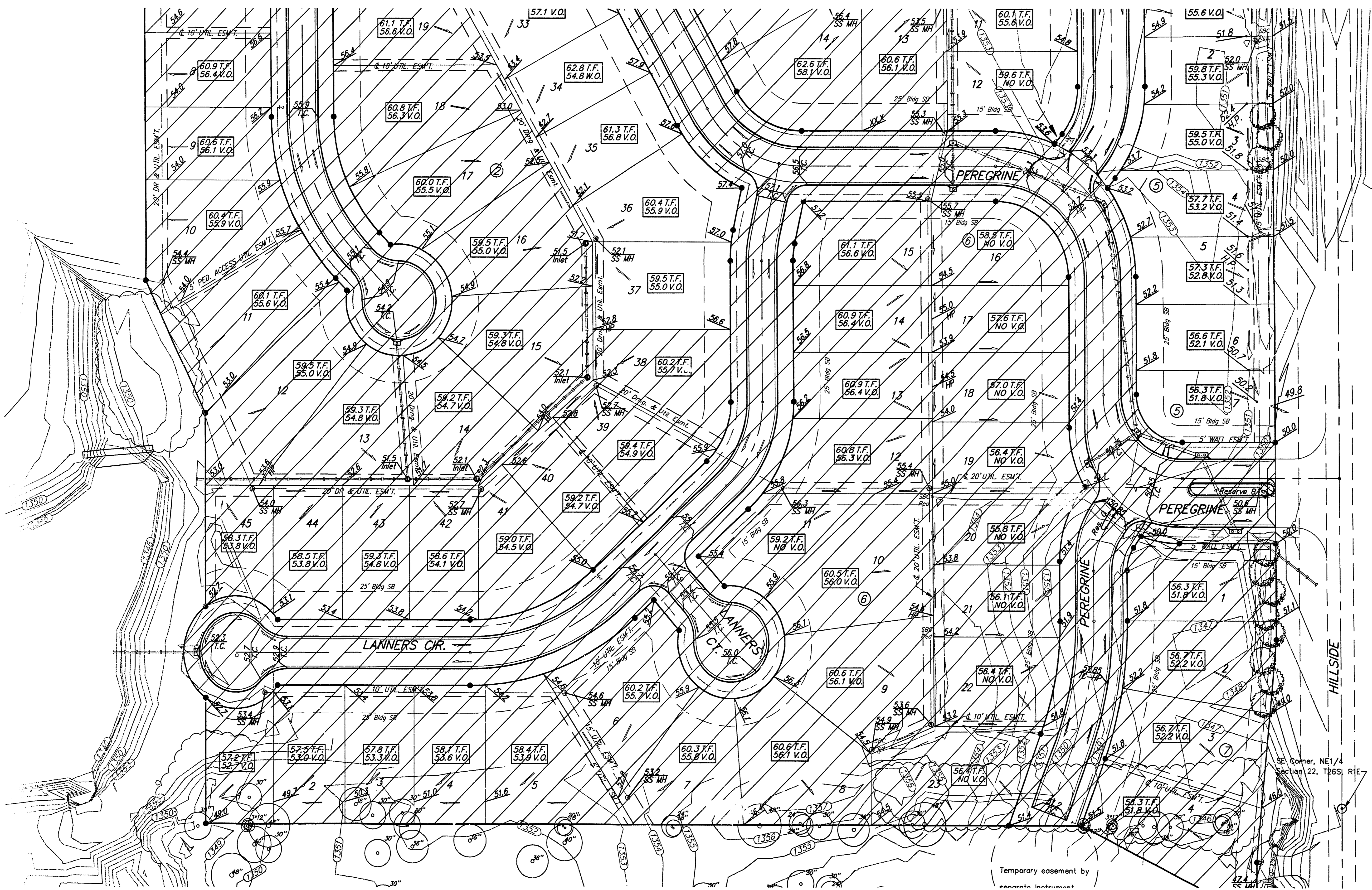
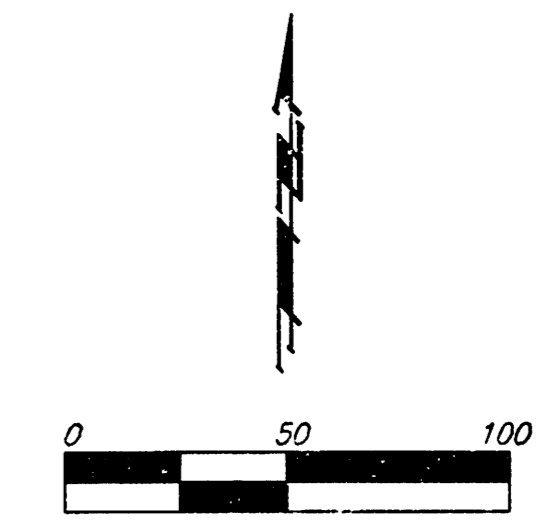
FALCON FALLS ADDITION	
Baughman GRADING PLAN	
WICHITA, KANSAS	
Baughman Company, P.A. 315 Elm St., Wichita, KS 67211 F316263019	
ENGINEERING SURVEYING PLANNING LANDSCAPE ARCHITECTURE	
PROJECT NUMBER	DESIGN
REVISIONS	APPROVED
	DATE
	SCALE
	SHEET
	1 OF 2

BENCHMARKS:
 BM #1: "L" CL face of catch basin, west side of Lot 4, Block 5.
 Elev. = 1352.47 MSL

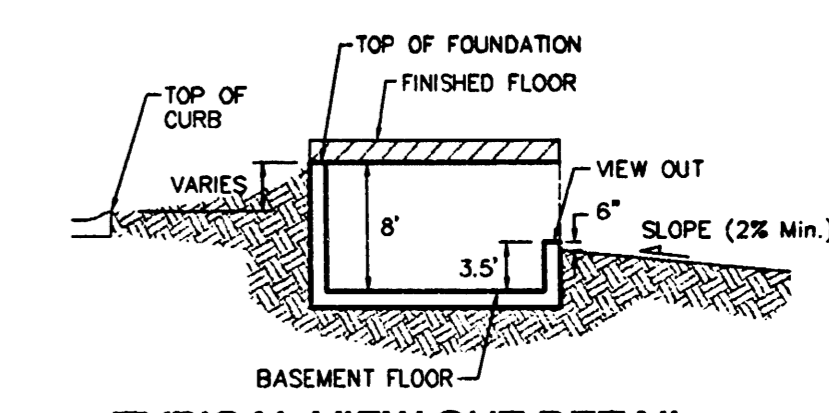
BM #2: "L" south end of the south curb return at Kite and Peregrine.
 Elev. = 1359.85 MSL

—(175)— EXISTING GRADE

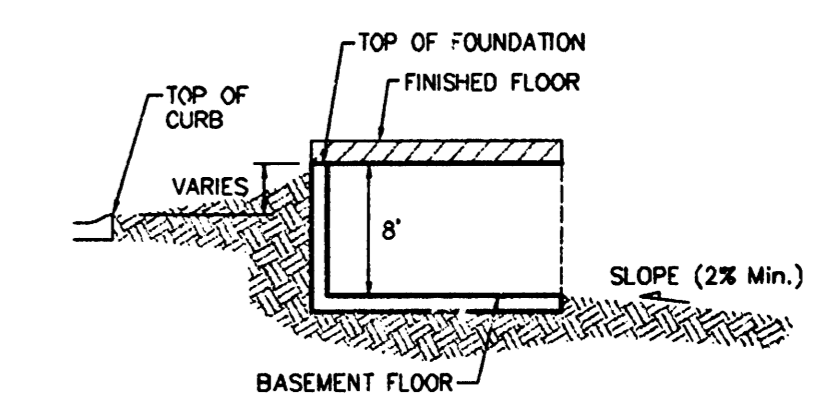
SHADED PORTIONS REPRESENT AREAS UNREVISED FROM ORIGINAL GRADING DATED 11/20/03 BY POE & ASSOCIATES OF KANSAS, INC.



TYPICAL NON-VIEW OUT DETAIL
NO SCALE



TYPICAL VIEW OUT DETAIL
NO SCALE



TYPICAL WALK OUT DETAIL
NO SCALE

- NOTES:**
1. PROPOSED TOP OF FOUNDATION ELEVATIONS ARE SHOWN ON PLANS. CONTRACTOR TO SET FINISHED FLOOR AND GARAGE FLOOR ELEVATIONS. ALL STREET ELEVATIONS SHOWN ON PLANS ARE FOR TOP OF CURB (FULL-HEIGHT).
 2. THIS GRADING PLAN IS DESIGNED WITH VIEW-OUTS AND WALK-OUTS. ELEVATIONS SHOWN AS XX.X V.O. DEPICT VIEW-OUT STRUCTURES. ELEVATIONS SHOWN AS XX.X W.O. DEPICT WALK-OUT STRUCTURES.
 3. ALL LOTS SHALL MEET MINIMUM PAD REQUIREMENT AS SHOWN ON THE RECORDED PLAT.
 4. LOT DIMENSIONS HAVE BEEN OMITTED ON THIS PLAN. REFER TO THE RECORDED PLAT FOR FINAL DIMENSION, EASEMENT, & BUILDING SETBACK INFORMATION.
 5. HOUSE PAD ELEVATIONS DEPICTED WITH BOLD OUTLINES WITH TOP OF FOUNDATIONS SHOWN AS XX.X T.F.* INDICATE THAT DEEP FOOTINGS OR DEEP FOUNDATIONS MAY BE REQUIRED.
 6. A DRAINAGE PLAN HAS BEEN DEVELOPED FOR THIS SUBDIVISION AND IS ON FILE WITH THE CITY OF WICHITA, KANSAS. DRAINAGE INTENT SHALL REMAIN AS DEPICTED OR AS MODIFIED WITH THE APPROVAL OF THE CITY ENGINEER OF THE CITY OF WICHITA, KANSAS. NO OBSTRUCTIONS WHICH IMPEDE THE FLOW OF THIS DRAINAGE PLAN SHALL BE ALLOWED.
 7. ALL ELEVATIONS SHOWN ARE M.S.L. DATUM.

Baughman		FALCON FALLS ADDITION	
		GRADING PLAN	
		WICHITA, KANSAS	
Baughman Company, P.A. 315 8th St. Wichita, KS 67211 P 316-262-7071 F 316-262-0149			
ENGINEERING SURVEYING PLANNING LANDSCAPE ARCHITECTURE			
PROJECT NUMBER	DESIGN	DRAWN	TMS
REVISIONS	APPROVED	DATE	2/22/05
	SCALE	Noted	
	SHEET	2 OF 2	
Falcon Falls/Crsd2			