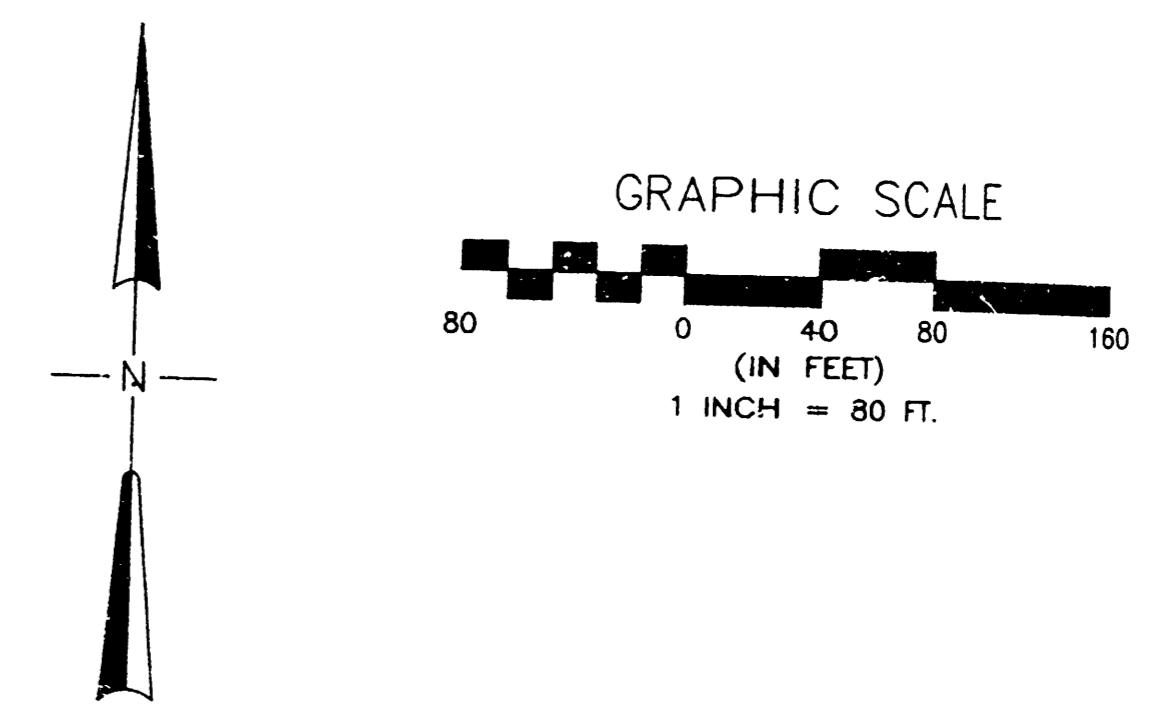


Street Plan Check
July 18, 2003 by B.K.



LEGEND

- 11 Lot number
- F 64.4 Top of foundation elevation ("7"-8" above basement floor)
- G 62.9 Garage floor elevation
- R 99.4 Top of rear wall elevation on view out (ground 6" below)
- W 99.4 Top of basement floor elevation on walk out
- 99.2 Ground elevation at lot corner
- 98.8 Ground elevation at "x"
- VO Viewout basement
The ground elevation at the viewout wall is 5 feet below the top of the foundation.
- WC Walkout basement
The ground elevation at the walkout wall is 8 feet below the top of the foundation.
- NV No viewout

NOTES

1. ADD 1300 TO ELEVATIONS SHOWN TO GET USGS DATUM
2. ONLY THOSE TREES WITHIN PROPOSED STREET RIGHT-OF-WAY MAY BE REMOVED AT THE APPROVAL OF THE OWNER AND/OR THE ENGINEER
3. THIS GRADING PLAN IS SUBJECT TO CHANGE TO MATCH FINAL PAVING AND DRAINAGE PLANS
4. FRONT LOT CORNER ELEVATIONS ARE SHOWN IN STREET FRONT LOT CORNER ELEVATIONS ARE 0.5 FEET ABOVE TOP OF CURB ELEVATION (TOP OF CURB ELEVATIONS ARE NOT SHOWN!!!)
5. GARAGE FLOOR ELEVATIONS ARE SET 3' ABOVE HIGHEST FRONT LOT CORNER ELEVATION (TYPICAL)
6. THIS PLAN WAS PREPARED FOR DRAINAGE PURPOSES ONLY. THE EXISTING GROUND LINE MAY HAVE BEEN CHANGED IN SOME AREAS WITH THIS ADDITION. GRADE CHANGES IN THESE AREAS MAY NOT HAVE BEEN MADE WITH ENGINEERED FILLS. BUILDERS MAY NEED TO OBTAIN FOUNDATION ADVISE FROM A GEOTECHNICAL ENGINEER PRIOR TO CONSTRUCTION.

APPROVED DRAINAGE PLAN

BENCHMARK

1. Brass Plate on North Hub Guard of R.C.B.C. 50' East of NW Corner NE 1/4, S22, T26S, R1E Elevation 1371.83 M.S.L. Datum

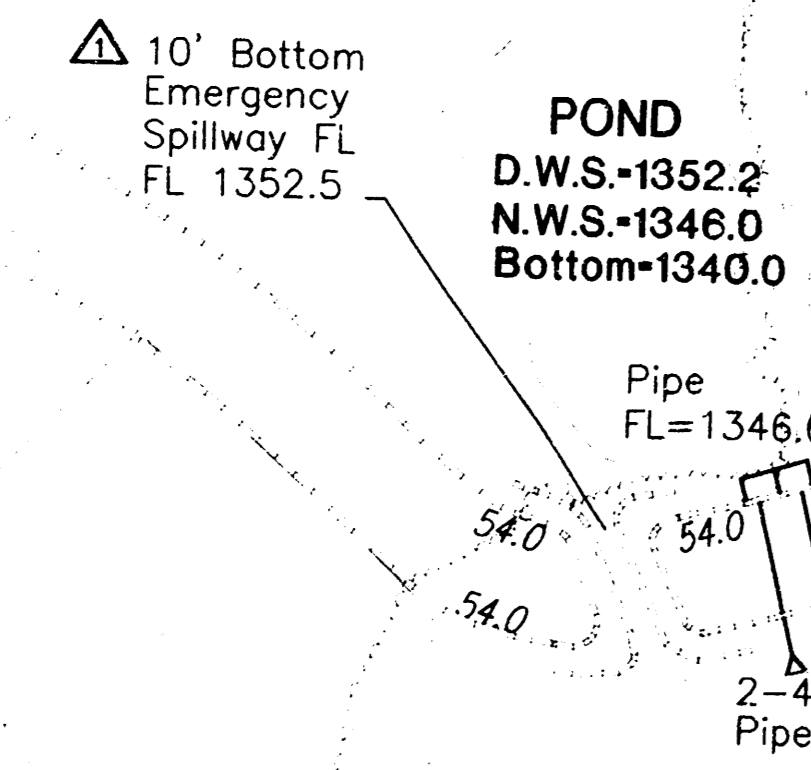
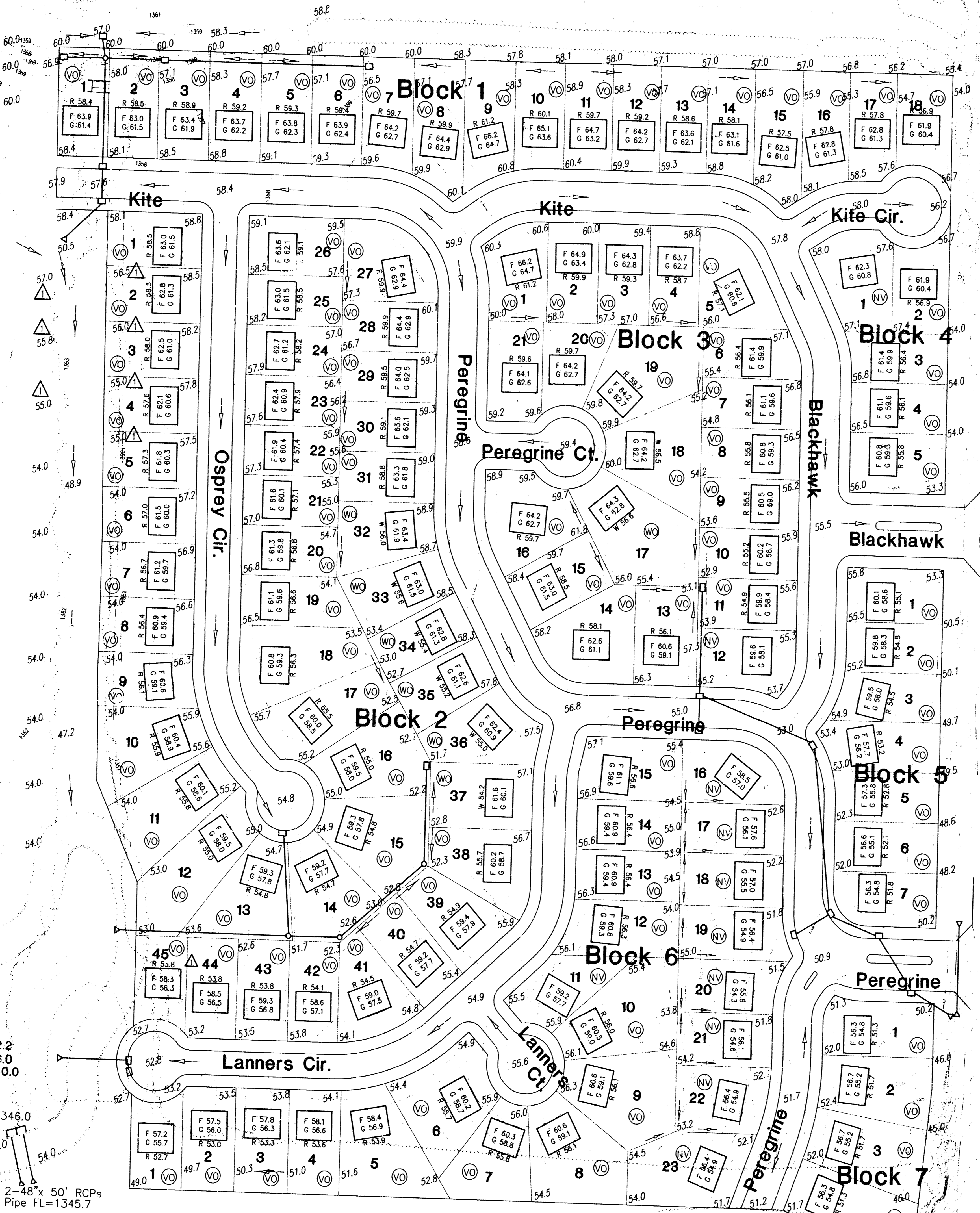
James M. Ueber
Professional Engineer
14698
20.65
KANSAS
Professional Engineer

Revised: 10/01/03

PE POE & ASSOCIATES OF KANSAS, INC.
5940 E. Central Suite 200 • Wichita, KS 67208-4242
Phone 316/685-4114 • FAX 316/685-4444

FALCON FALLS ADDN.

Lotgrading Plan
FALCON FALLS ADDITION
TO WICHITA, SEDGWICK COUNTY, KANSAS



S:\MPS\021\01\148\lotgradingplan.dwg Thu Nov 20 09:46:39 2003