

APPROVED DRAINAGE PLAN



SCALE:
1" = 60'
• = IRON

BENCHMARK
City of Wichita Benchmark Disc.
located North and East of the intersection
of 119th St. West and Pawnee.
Elev. = 148.68 City Datum
= 1336.08 NGVD

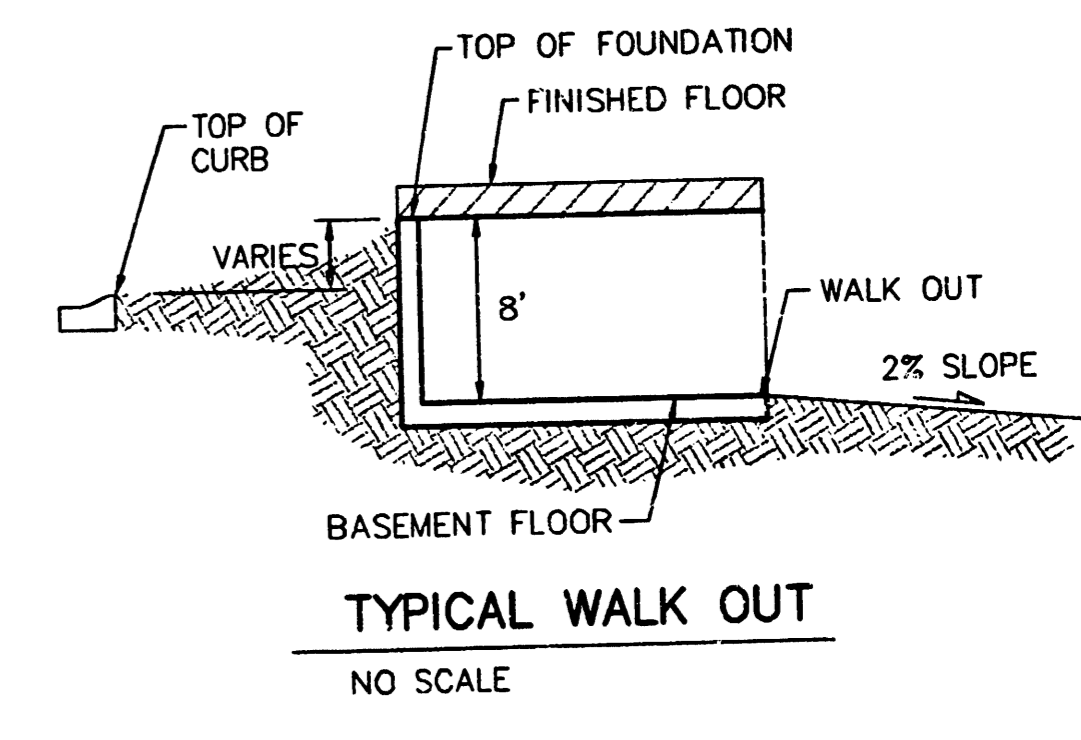
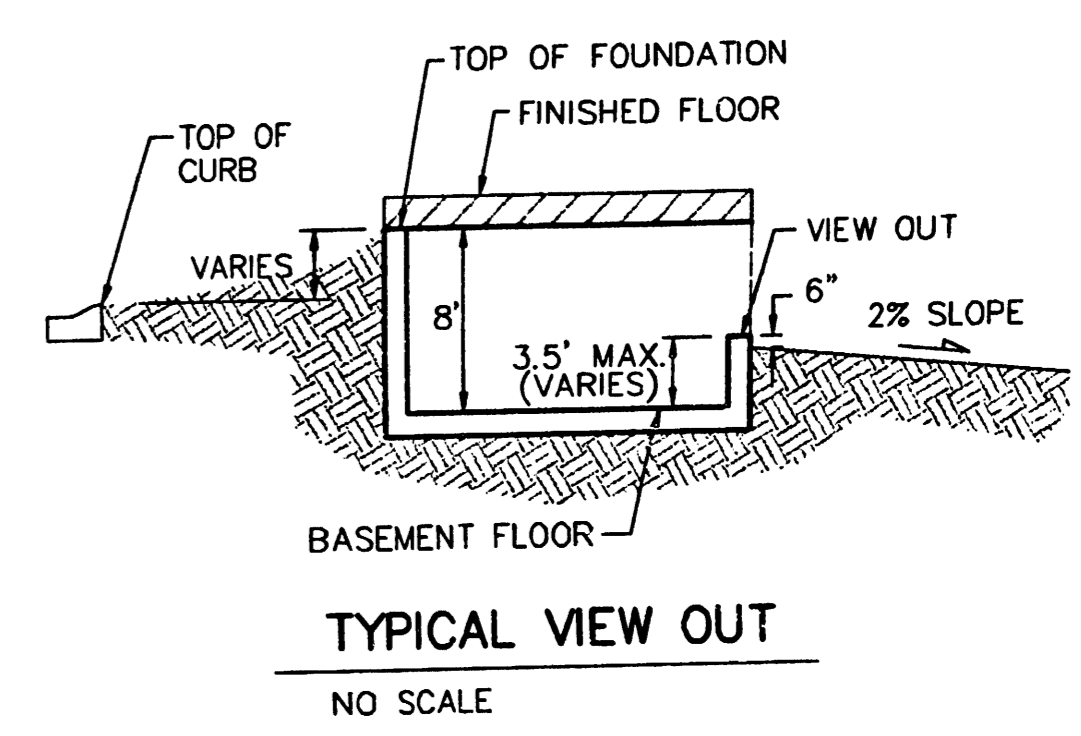
NOTE:
Minimum building pad elevation
for the lowest opening to the
structures on all lots in this
subdivision shall be 146.7 city
datum (1334.1 NGVD).

NOTE:
All lots within Flat Creek Addition
shall have a 5 foot interior
sideyard setback.

NOTE:
Proposed top of foundation are shown
on plans. Contractor to set finish floor
elevation.

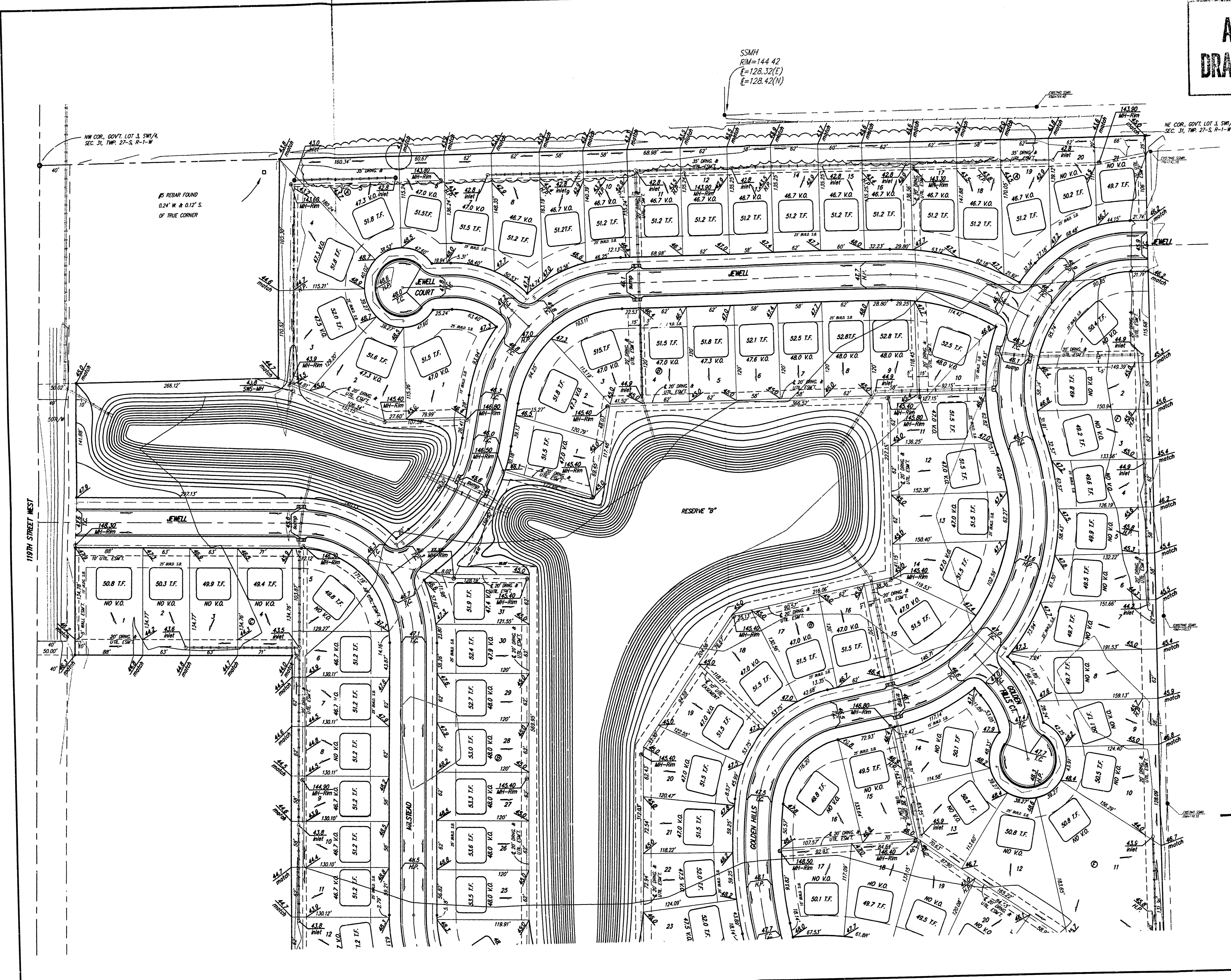
All street elevations shown on plans
are for top of curb (full height).

View-out elevations are denoted as
XXX.V.O.
Walk-out elevations are denoted as
XX.X.W.O.
CONTOUR INTERVAL = 1 FT.



REVISED 3-24-03 BY AEG
REVISED LOTS 4-6, BLK F & LOT 1, BLK D 1/20/03 BY AEG
REVISED LOTS 8 & 11, BLK F 1/8/03 BY AEG
REVISED 8/19/02 BY AEG PER NBW
Rev. Lots 1-21, Blk A, CAD#2001 BLG

FLAT CREEK ADDITION			
GRADING PLAN			
WICHITA, KANSAS			
BAUGHMAN COMPANY P.A.			
ENGINEERING, SURVEYING, & PLANNING			
316-262-7271 • 316 ELLIS • WICHITA, KANSAS 67211			
PROJECT NUMBER		SHEET	
		1	
DESIGN	DRAWN	APPROVED	DATE
NBW,BLC	BLC		04/27/07
SCALE		NO. TYPED	
		3	



SSMH
RIM=144.42
E=128.32(E)
E=128.42(N)

NO REBAR FOUND
0.24' W & 0.12' S
OF TRUE CORNER

RESERVE 20'

119th STREET WEST

JEWELL

GOLDEN HILLS

MUSTARD

NE COR., GOV'T. LOT 3, SW 1/4
SEC. 31, TWP. 27-S, R-1-W

NW COR., GOV'T. LOT 3, SW 1/4
SEC. 31, TWP. 27-S, R-1-W

JEWELL COURT

JEWELL

GOLDEN HILLS

MUSTARD

NE COR., GOV'T. LOT 3, SW 1/4
SEC. 31, TWP. 27-S, R-1-W

NW COR., GOV'T. LOT 3, SW 1/4
SEC. 31, TWP. 27-S, R-1-W

JEWELL COURT

JEWELL

GOLDEN HILLS

MUSTARD

NE COR., GOV'T. LOT 3, SW 1/4
SEC. 31, TWP. 27-S, R-1-W

NW COR., GOV'T. LOT 3, SW 1/4
SEC. 31, TWP. 27-S, R-1-W

JEWELL COURT

JEWELL

GOLDEN HILLS

MUSTARD

NE COR., GOV'T. LOT 3, SW 1/4
SEC. 31, TWP. 27-S, R-1-W

NW COR., GOV'T. LOT 3, SW 1/4
SEC. 31, TWP. 27-S, R-1-W

JEWELL COURT

JEWELL

GOLDEN HILLS

MUSTARD

NE COR., GOV'T. LOT 3, SW 1/4
SEC. 31, TWP. 27-S, R-1-W

NW COR., GOV'T. LOT 3, SW 1/4
SEC. 31, TWP. 27-S, R-1-W

JEWELL COURT

JEWELL

GOLDEN HILLS

MUSTARD

NE COR., GOV'T. LOT 3, SW 1/4
SEC. 31, TWP. 27-S, R-1-W

NW COR., GOV'T. LOT 3, SW 1/4
SEC. 31, TWP. 27-S, R-1-W

JEWELL COURT

JEWELL

GOLDEN HILLS

MUSTARD

NE COR., GOV'T. LOT 3, SW 1/4
SEC. 31, TWP. 27-S, R-1-W

NW COR., GOV'T. LOT 3, SW 1/4
SEC. 31, TWP. 27-S, R-1-W

JEWELL COURT

JEWELL

GOLDEN HILLS

MUSTARD

NE COR., GOV'T. LOT 3, SW 1/4
SEC. 31, TWP. 27-S, R-1-W

NW COR., GOV'T. LOT 3, SW 1/4
SEC. 31, TWP. 27-S, R-1-W

JEWELL COURT

JEWELL

GOLDEN HILLS

MUSTARD

NE COR., GOV'T. LOT 3, SW 1/4
SEC. 31, TWP. 27-S, R-1-W

NW COR., GOV'T. LOT 3, SW 1/4
SEC. 31, TWP. 27-S, R-1-W

JEWELL COURT

JEWELL

GOLDEN HILLS

MUSTARD

NE COR., GOV'T. LOT 3, SW 1/4
SEC. 31, TWP. 27-S, R-1-W

NW COR., GOV'T. LOT 3, SW 1/4
SEC. 31, TWP. 27-S, R-1-W

JEWELL COURT

JEWELL

GOLDEN HILLS

MUSTARD

NE COR., GOV'T. LOT 3, SW 1/4
SEC. 31, TWP. 27-S, R-1-W

NW COR., GOV'T. LOT 3, SW 1/4
SEC. 31, TWP. 27-S, R-1-W

JEWELL COURT

JEWELL

GOLDEN HILLS

MUSTARD

NE COR., GOV'T. LOT 3, SW 1/4
SEC. 31, TWP. 27-S, R-1-W

NW COR., GOV'T. LOT 3, SW 1/4
SEC. 31, TWP. 27-S, R-1-W

JEWELL COURT

JEWELL

GOLDEN HILLS

MUSTARD

NE COR., GOV'T. LOT 3, SW 1/4
SEC. 31, TWP. 27-S, R-1-W

NW COR., GOV'T. LOT 3, SW 1/4
SEC. 31, TWP. 27-S, R-1-W

JEWELL COURT

JEWELL

GOLDEN HILLS

MUSTARD

NE COR., GOV'T. LOT 3, SW 1/4
SEC. 31, TWP. 27-S, R-1-W

NW COR., GOV'T. LOT 3, SW 1/4
SEC. 31, TWP. 27-S, R-1-W

JEWELL COURT

JEWELL

GOLDEN HILLS

MUSTARD

NE COR., GOV'T. LOT 3, SW 1/4
SEC. 31, TWP. 27-S, R-1-W

NW COR., GOV'T. LOT 3, SW 1/4
SEC. 31, TWP. 27-S, R-1-W

JEWELL COURT

JEWELL

GOLDEN HILLS

MUSTARD

NE COR., GOV'T. LOT 3, SW 1/4
SEC. 31, TWP. 27-S, R-1-W

NW COR., GOV'T. LOT 3, SW 1/4
SEC. 31, TWP. 27-S, R-1-W

JEWELL COURT

JEWELL

GOLDEN HILLS

MUSTARD

NE COR., GOV'T. LOT 3, SW 1/4
SEC. 31, TWP. 27-S, R-1-W

NW COR., GOV'T. LOT 3, SW 1/4
SEC. 31, TWP. 27-S, R-1-W

JEWELL COURT

JEWELL

GOLDEN HILLS

MUSTARD

NE COR., GOV'T. LOT 3, SW 1/4
SEC. 31, TWP. 27-S, R-1-W

NW COR., GOV'T. LOT 3, SW 1/4
SEC. 31, TWP. 27-S, R-1-W

JEWELL COURT

JEWELL

GOLDEN HILLS

MUSTARD

NE COR., GOV'T. LOT 3, SW 1/4
SEC. 31, TWP. 27-S, R-1-W

NW COR., GOV'T. LOT 3, SW 1/4
SEC. 31, TWP. 27-S, R-1-W

JEWELL COURT

JEWELL

GOLDEN HILLS

MUSTARD

NE COR., GOV'T. LOT 3, SW 1/4
SEC. 31, TWP. 27-S, R-1-W

NW COR., GOV'T. LOT 3, SW 1/4
SEC. 31, TWP. 27-S, R-1-W

JEWELL COURT

JEWELL

GOLDEN HILLS

MUSTARD

NE COR., GOV'T. LOT 3, SW 1/4
SEC. 31, TWP. 27-S, R-1-W

NW COR., GOV'T. LOT 3, SW 1/4
SEC. 31, TWP. 27-S, R-1-W

JEWELL COURT

JEWELL

GOLDEN HILLS

MUSTARD

NE COR., GOV'T. LOT 3, SW 1/4
SEC. 31, TWP. 27-S, R-1-W

NW COR., GOV'T. LOT 3, SW 1/4
SEC. 31, TWP. 27-S, R-1-W

JEWELL COURT

JEWELL

GOLDEN HILLS

MUSTARD

NE COR., GOV'T. LOT 3, SW 1/4
SEC. 31, TWP. 27-S, R-1-W

NW COR., GOV'T. LOT 3, SW 1/4
SEC. 31, TWP. 27-S, R-1-W

JEWELL COURT

JEWELL

GOLDEN HILLS

MUSTARD

NE COR., GOV'T. LOT 3, SW 1/4
SEC. 31, TWP. 27-S, R-1-W

NW COR., GOV'T. LOT 3, SW 1/4
SEC. 31, TWP. 27-S, R-1-W

JEWELL COURT

JEWELL

GOLDEN HILLS

MUSTARD

NE COR., GOV'T. LOT 3, SW 1/4
SEC. 31, TWP. 27-S, R-1-W

NW COR., GOV'T. LOT 3, SW 1/4
SEC. 31, TWP. 27-S, R-1-W

JEWELL COURT

JEWELL

GOLDEN HILLS

MUSTARD

NE COR., GOV'T. LOT 3, SW 1/4
SEC. 31, TWP. 27-S, R-1-W

NW COR., GOV'T. LOT 3, SW 1/4
SEC. 31, TWP. 27-S, R-1-W

JEWELL COURT

JEWELL

GOLDEN HILLS

MUSTARD

NE COR., GOV'T. LOT 3, SW 1/4
SEC. 31, TWP. 27-S, R-1-W

NW COR., GOV'T. LOT 3, SW 1/4
SEC. 31, TWP. 27-S, R-1-W

JEWELL COURT

JEWELL

GOLDEN HILLS

MUSTARD

NE COR., GOV'T. LOT 3, SW 1/4
SEC. 31, TWP. 27-S, R-1-W

NW COR., GOV'T. LOT 3, SW 1/4
SEC. 31, TWP. 27-S, R-1-W

JEWELL COURT

JEWELL

GOLDEN HILLS

MUSTARD

NE COR., GOV'T. LOT 3, SW 1/4
SEC. 31, TWP. 27-S, R-1-W

NW COR., GOV'T. LOT 3, SW 1/4
SEC. 31, TWP. 27-S, R-1-W

JEWELL COURT

JEWELL

GOLDEN HILLS

MUSTARD

NE COR., GOV'T. LOT 3, SW 1/4
SEC. 31, TWP. 27-S, R-1-W

NW COR., GOV'T. LOT 3, SW 1/4
SEC. 31, TWP. 27-S, R-1-W

JEWELL COURT

JEWELL

GOLDEN HILLS

MUSTARD

NE COR., GOV'T. LOT 3, SW 1/4
SEC. 31, TWP. 27-S, R-1-W

NW COR., GOV'T. LOT 3, SW 1/4
SEC. 31, TWP. 27-S, R-1-W

JEWELL COURT

JEWELL

GOLDEN HILLS

MUSTARD

NE COR., GOV'T. LOT 3, SW 1/4
SEC. 31, TWP. 27-S, R-1-W

NW COR., GOV'T. LOT 3, SW 1/4
SEC. 31, TWP. 27-S, R-1-W

JEWELL COURT

JEWELL

GOLDEN HILLS

MUSTARD

NE COR., GOV'T. LOT 3, SW 1/4
SEC. 31, TWP. 27-S, R-1-W

NW COR., GOV'T. LOT 3, SW 1/4
SEC. 31, TWP. 27-S, R-1-W

JEWELL COURT

JEWELL

GOLDEN HILLS

MUSTARD

NE COR., GOV'T. LOT 3, SW 1/4
SEC. 31, TWP. 27-S, R-1-W

NW COR., GOV'T. LOT 3, SW 1/4
SEC. 31, TWP. 27-S, R-1-W

JEWELL COURT

JEWELL

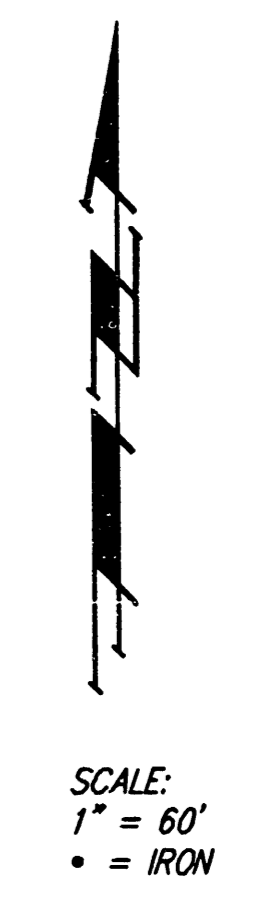
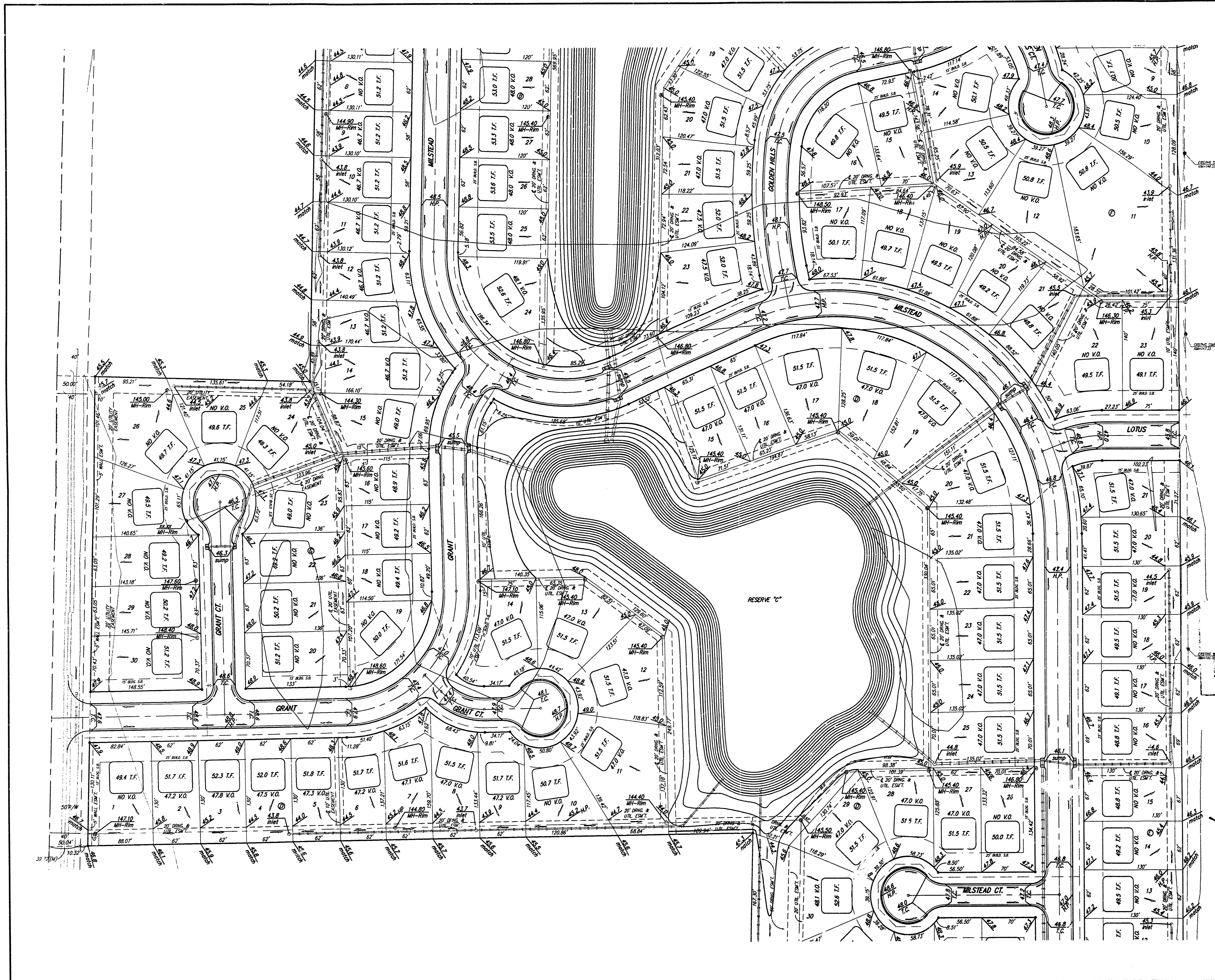
GOLDEN HILLS

MUSTARD

NE COR., GOV'T. LOT 3, SW 1/4
SEC. 31, TWP. 27-S, R-1-W

NW COR., GOV'T. LOT 3, SW 1/4
SEC. 31, TWP. 27-S, R-1-W

JEWELL COURT



SCALE:
1" = 60'
• = IRON

BENCHMARK
City of Wichita Benchmark Disc.
located North and East of the intersection
of 119th St. West and Pawnee.
Elev. = 148.68 City Datum
= 1336.08 NGVD

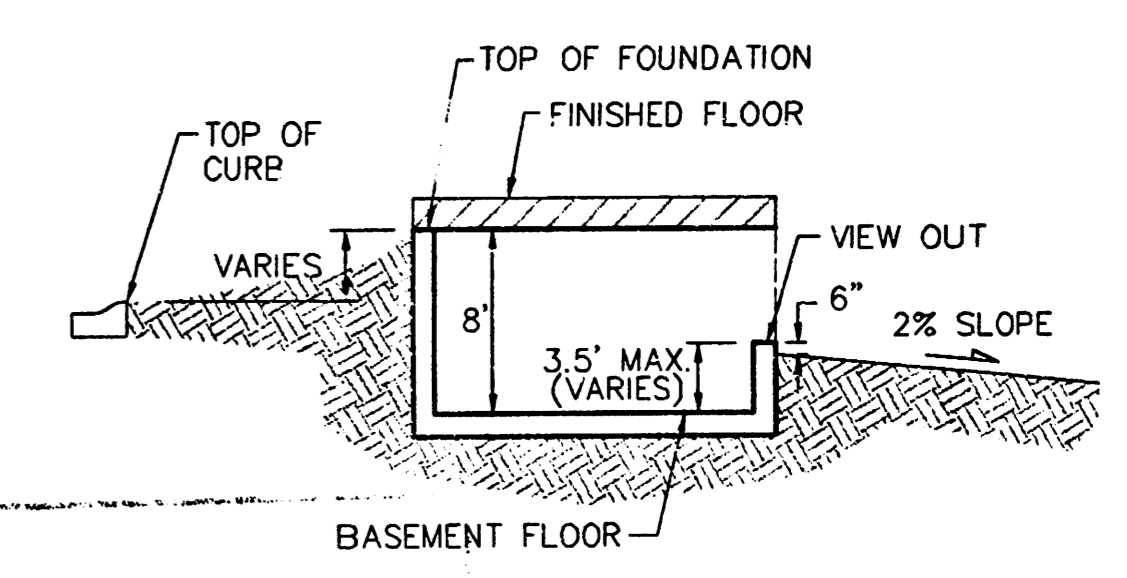
NOTE:
Minimum building pad elevation
for the lowest opening to the
structures on all lots in this
subdivision shall be 146.7 city
datum (1334.1 NGVD).

NOTE:
All lots within Flat Creek Addition
shall have a 5 foot interior
sideyard setback.

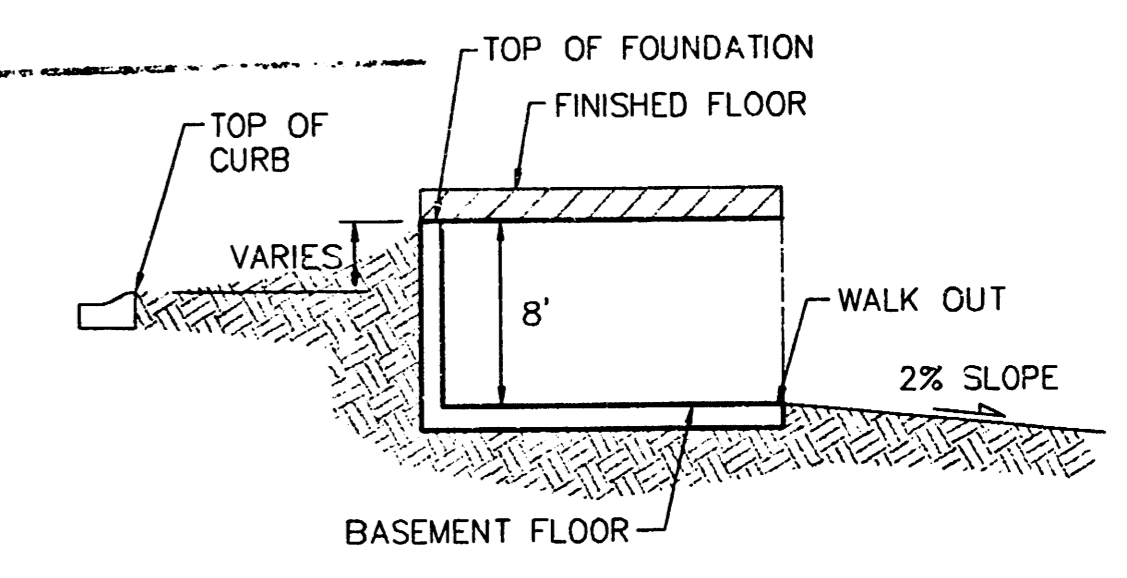
NOTE:
Proposed top of foundation are shown
on plans. Contractor to set finish floor
elevation.

All street elevations shown on plans
are for top of curb (full height).

View-cut elevations are denoted as
XX.X V.O.
Walk-out elevations are denoted as
XX.X W.O.
CONTOUR INTERVAL = 1 FT.



TYPICAL VIEW OUT
NO SCALE



TYPICAL WALK OUT
NO SCALE

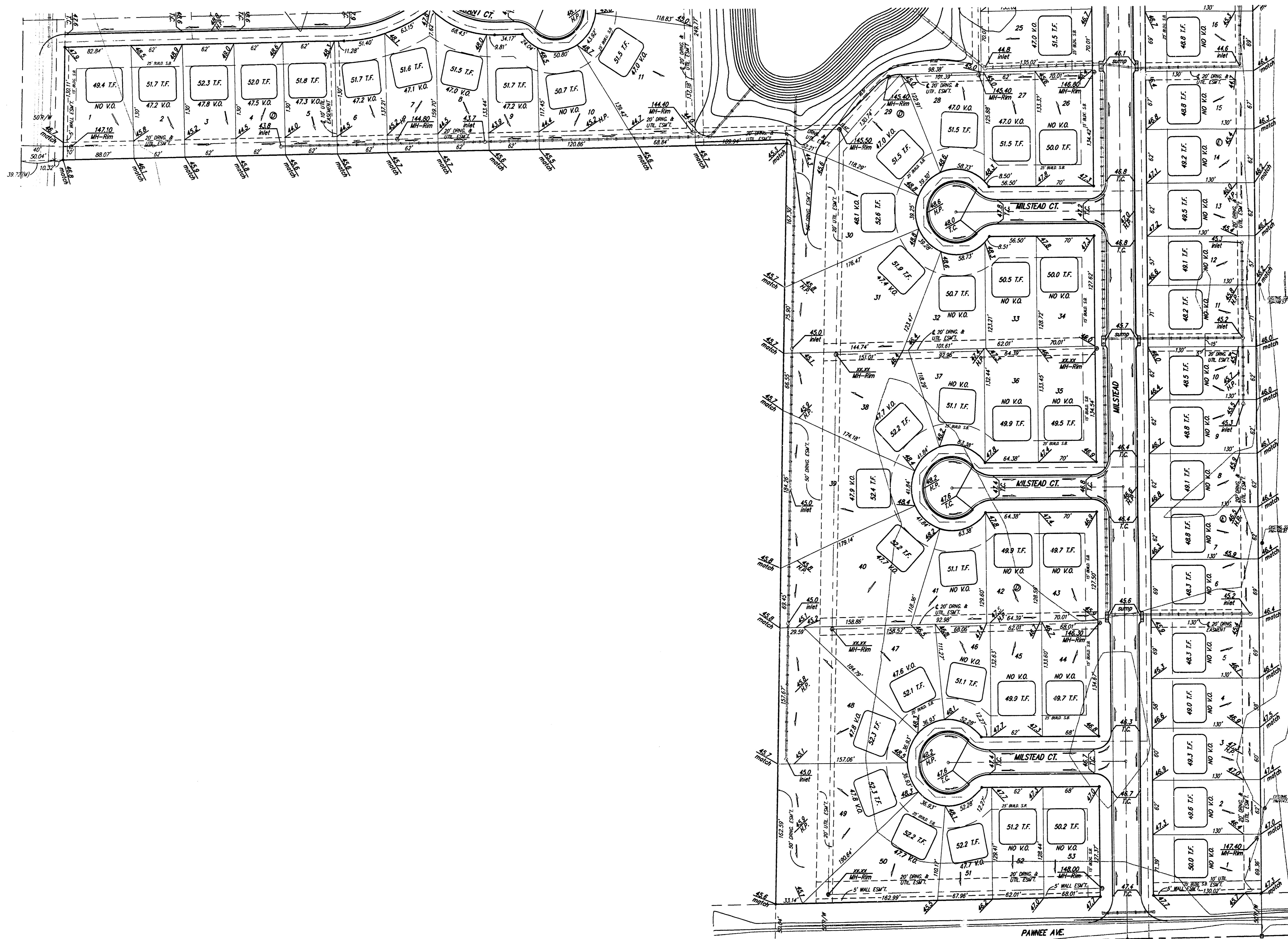
REVISED LOTS 19-31, E; 27, D; 37-41, D; 46-51, D 3-5-03 BY AEG
REVISED 3-24-03 BY AEG
REVISED LOTS 4-6, BLK F & LOT 1, BLK D 1/20/03 BY AEG
REVISED LOTS 8 & 11, BLK F 1/18/03 BY AEG
REVISED 6/12/02 BY AEG PER NSW

FLAT CREEK ADDITION
GRADING PLAN
WICHITA, KANSAS

BAUGHMAN COMPANY P.A.
ENGINEERING, SURVEYING, & PLANNING
316-262-7271 • 315 ELLIS • WICHITA, KANSAS 67211

DESIGN NDW/RLG	DRAWN BLG	APPROVED	DATE 04/27/01	SCALE NOTED	SHEET 2
PROJECT NUMBER					OF 3

1/02/2010



SCALE:
1" = 60'
• = IRON

BENCHMARK
City of Wichita Benchmark Disc.
located North and East of the intersection
of 119th St. West and Pawnee.
Elev. = 148.68 City Datum
= 1336.08 NGVD

NOTE:
Minimum building pad elevation
for the lowest opening to the
structures on all lots in this
subdivision shall be 146.7 city
datum (1334.1 NGVD).

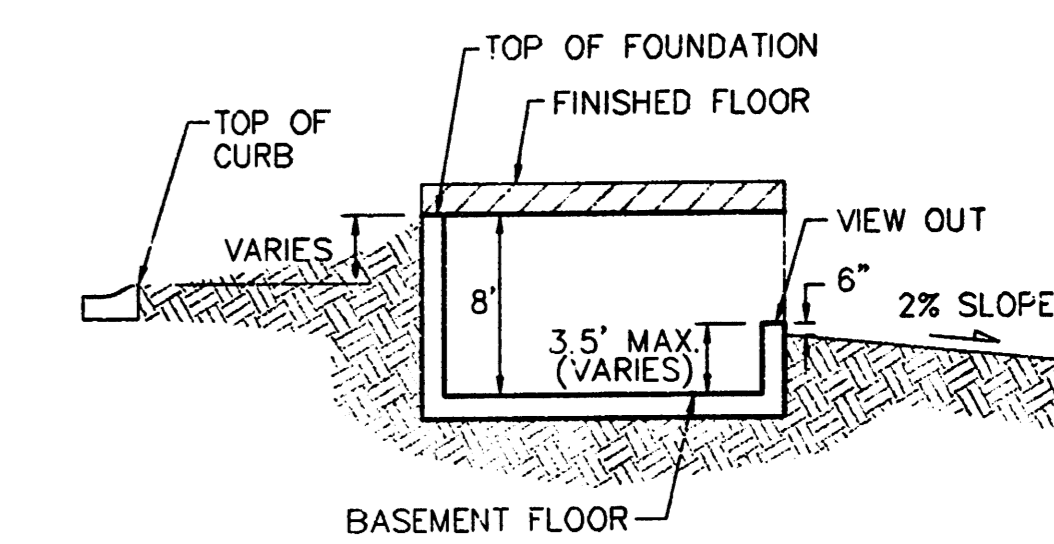
NOTE:
All lots within Flat Creek Addition
shall have a 5 foot interior
sideyard setback.

NOTE:
Proposed top of foundation are shown
on plans. Contractor to set finish
elevation.

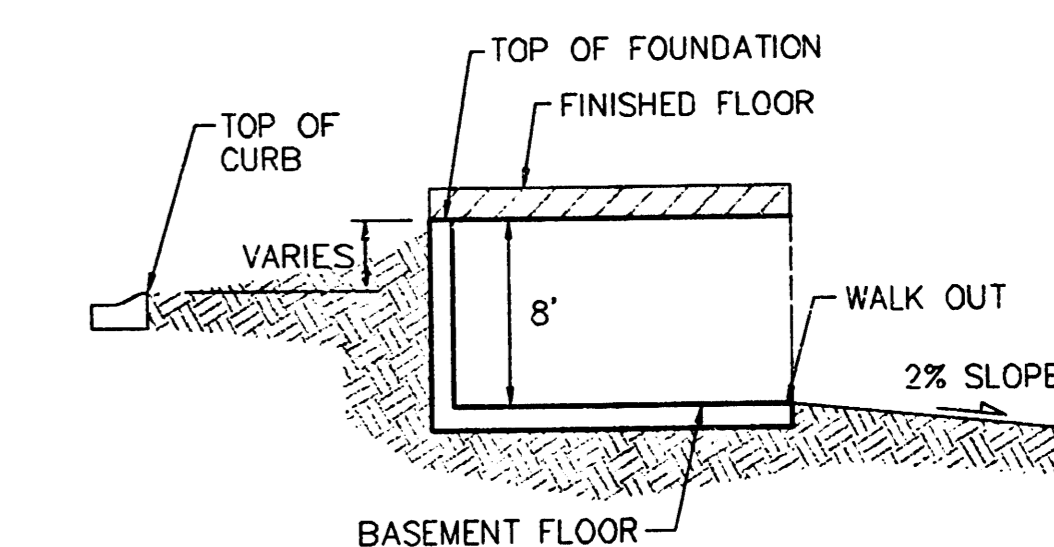
All street elevations shown on plans
are for top of curb (full height).

View-out elevations are denoted as
XX.X V.O.
Walk-out elevations are denoted as
XX.X W.O.

CONTOUR INTERVAL = 1 FT.



TYPICAL VIEW OUT
NO SCALE



TYPICAL WALK OUT
NO SCALE

REVISED LOTS 19-21, E, 27, D; 37-41, D; 46-51, D 3-5-03 BY AEG
REVISED 3-24-03 BY AEG
REVISED LOTS 4-6, BLK F & LOT 1, BLK D 1/20/03 BY AEG
REVISED 8/19/02 BY AEG PER NBW

FLAT CREEK ADDITION
GRADING PLAN
WICHITA, KANSAS

BAUGHMAN COMPANY P.A.
ENGINEERING, SURVEYING, & PLANNING
315-252-7271 • 315 ELLIS • WICHITA, KANSAS 67211

DESIGN NBW, BLG	DRAWN BLG	APPROVED	DATE 04/27/01
PROJECT NUMBER			SHEET 3 OF 3
			SCALE NOTED

SE COR. GOVT. LOT 4, SW 1/4,
SEC. 31, TWP. 27-S, R-1-W

L.T. GRADING