

SCALE:  
 1" = 60'  
 • = IRON

**BENCHMARK**  
 City of Wichita Benchmark Disc.  
 located North and East of the intersection  
 intersection of 119th St., West and Pawnee.  
 Elev = 148.65 City Datum  
 = 1336.09 NGVD

**NOTE:**  
 Minimum building pad elevation  
 for the lowest opening to the  
 structures on all lots in this  
 subdivision shall be 146.7 city  
 datum (1334.1 NGVD).

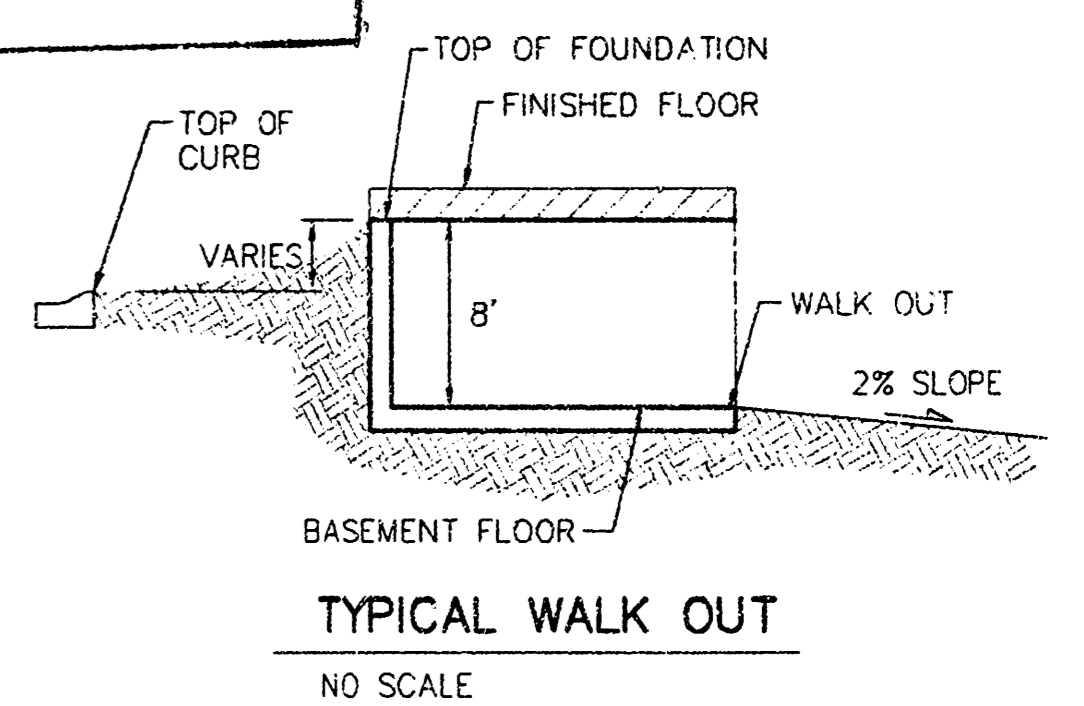
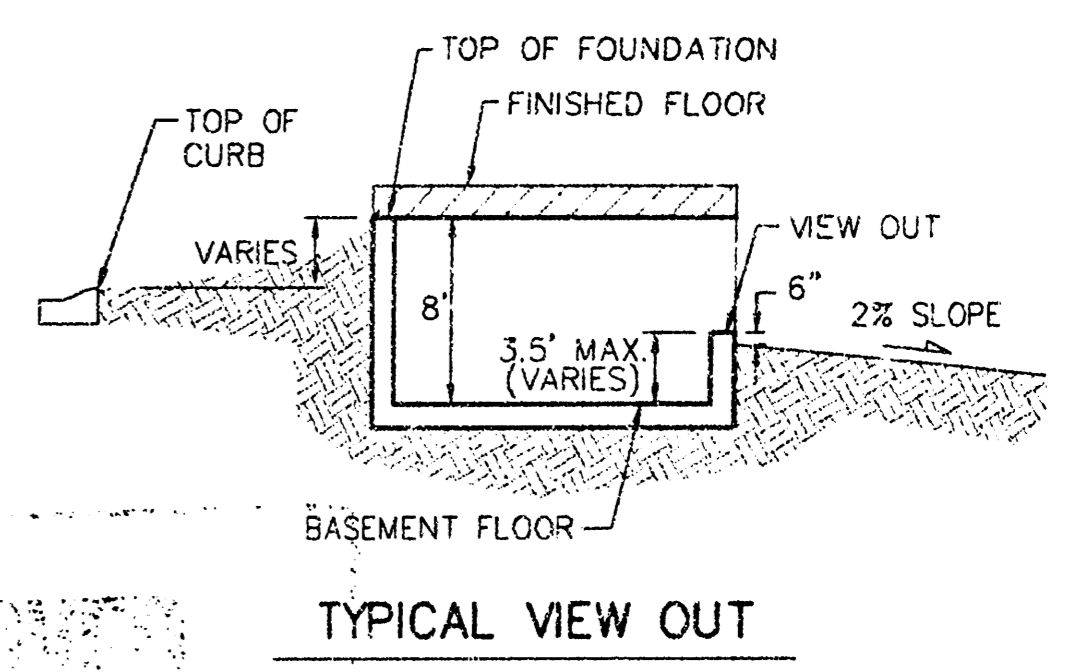
**NOTE:**  
 All lots within Flat Creek Addition  
 shall have a 5 foot interior  
 sideyard setback.

**NOTE:**  
 Proposed top of foundation are shown  
 on plans. Contractor to set finish floor  
 elevation.

All street elevations shown on plans  
 are for top of curb (full height).

View-out elevations are denoted as  
 XXX W.O.  
 Walk-out elevations are denoted as  
 XXX W.O.

CONTOUR INTERVAL = 1 FT.



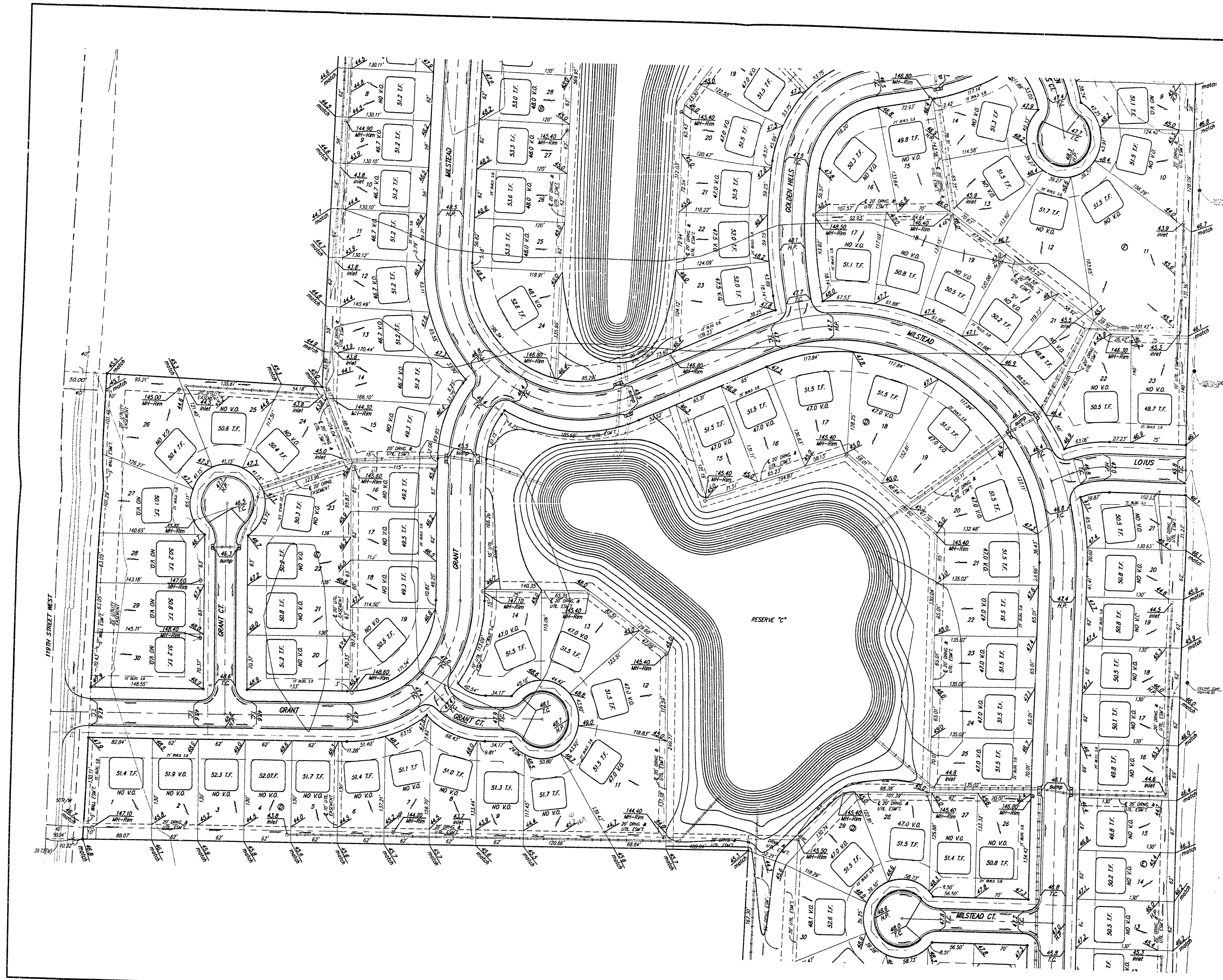
**APPROVED  
 GRADING PLAN**

REVISED 8/19/02 BY AEG PER NEW  
 Rev. Lots 1-21, Blk. A, Oldw2001 BLG

**FLAT CREEK ADDITION  
 GRADING PLAN**  
 WICHITA, KANSAS

**BAUGHMAN COMPANY P.A.**  
 ENGINEERING, SURVEYING, & PLANNING  
 316-262-2222 • 315 ELLIS • WICHITA, KANSAS 67211

DESIGN NEW,BLG	DRAWN BLG	APPROVED	DATE 04/27/01	SCALE NOTED	SHEET 1 OF 3
-------------------	--------------	----------	------------------	----------------	-----------------------



SCALE:  
1" = 60'  
• = IRON

**BENCHMARK**  
City of Wichita Benchmark Disc.  
located North and East of the intersection  
of 119th St. West and Pawnee.  
Elev. = 148.68 City Datum  
= 1336.08 NGVD

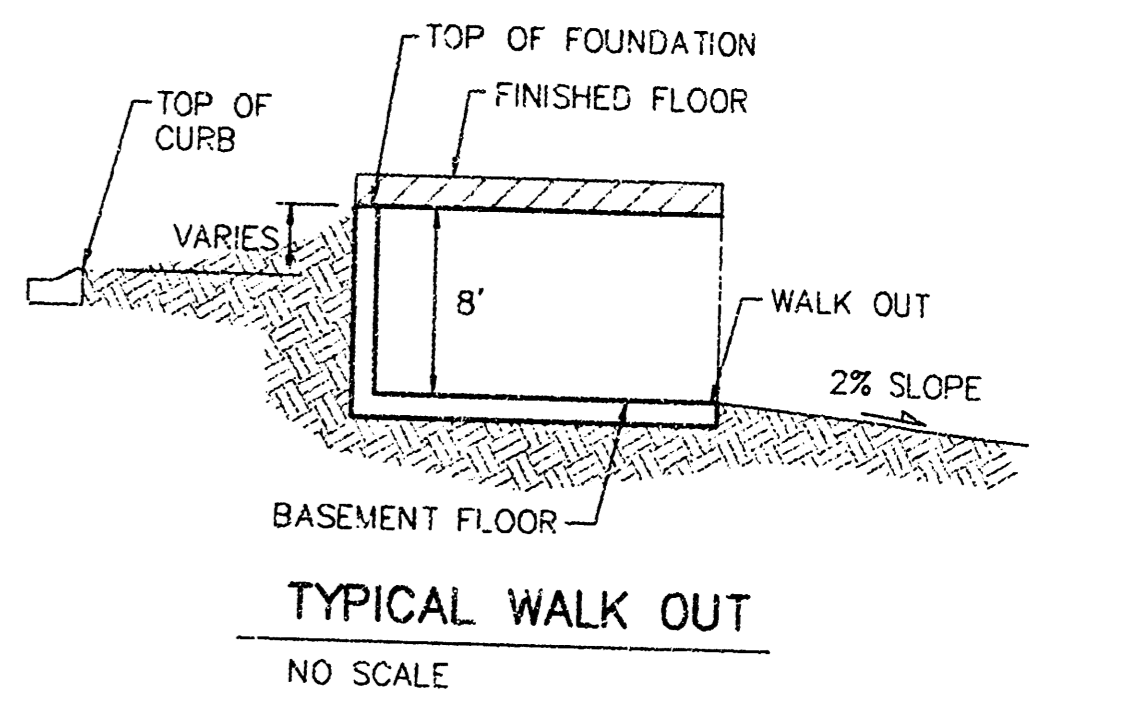
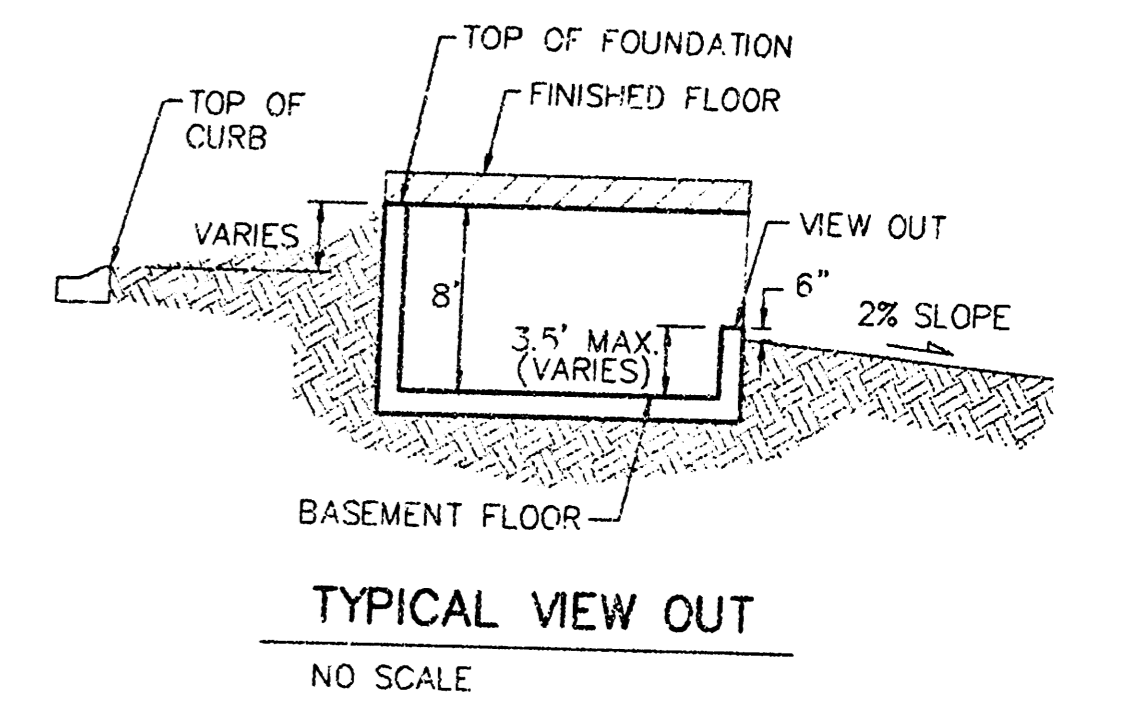
**NOTE:**  
Minimum building pad elevation  
for the lowest opening to the  
structures on all lots in this  
subdivision shall be 146.7 city  
datum (1334.1 NGVD).

**NOTE:**  
All lots within Flat Creek Addition  
shall have a 5 foot interior  
sideyard setback.

**NOTE:**  
Proposed top of foundation are shown  
on plans. Contractor to set finish floor  
elevation.

All street elevations shown on plans  
are for top of curb (full height).

View-out elevations are denoted as  
XXX V.O.  
Walk-out elevations are denoted as  
XXX W.O.  
CONTOUR INTERVAL = 1 FT.

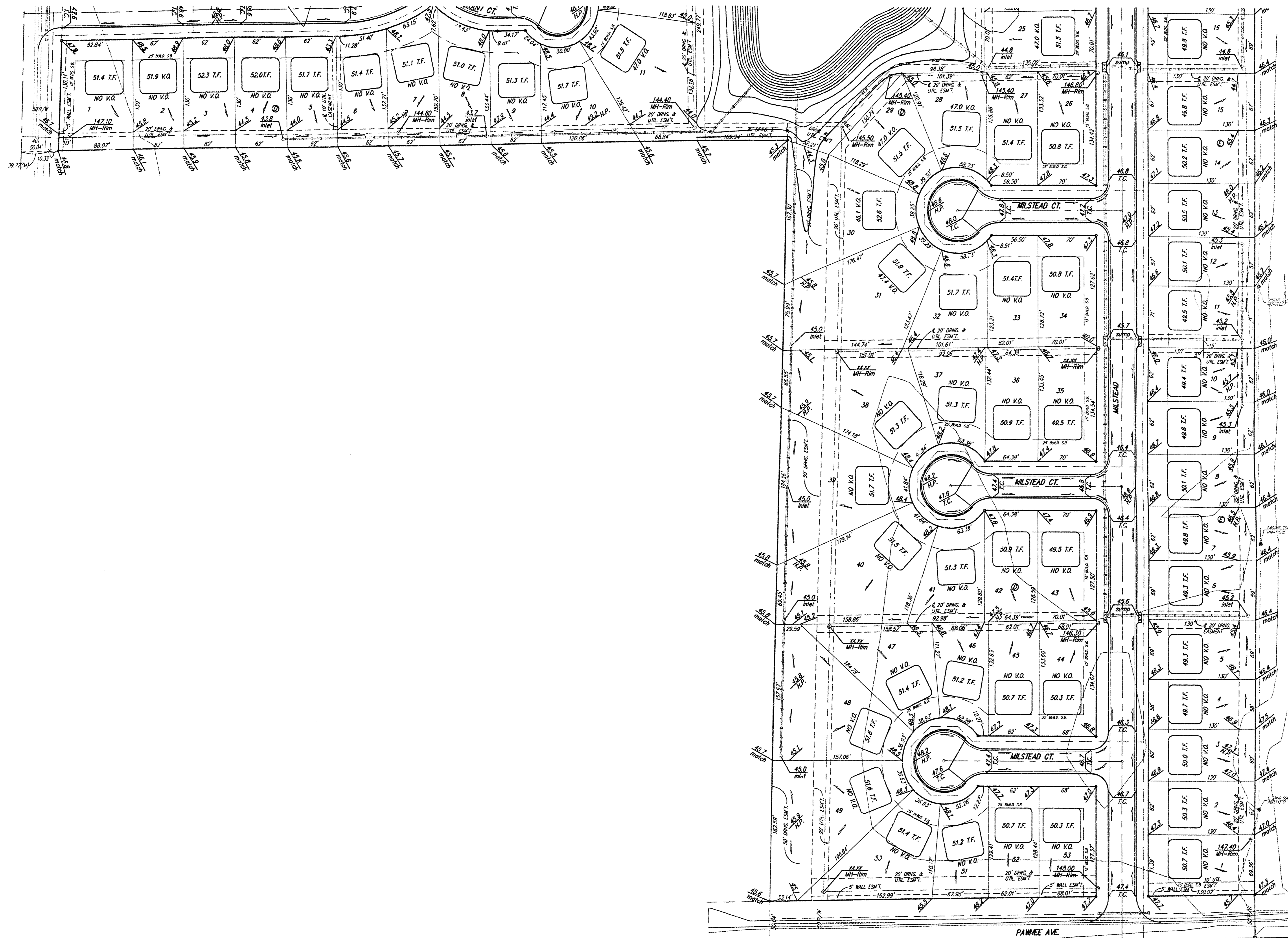


REVISED 8/19/02 BY AEG PER NBW

**FLAT CREEK ADDITION  
GRADING PLAN  
WICHITA, KANSAS**

**BAUGHMAN COMPANY P.A.**  
ENGINEERING, SURVEYING, & PLANNING  
316-262-7271 • 316 ELLIS • WICHITA, KANSAS 67211

DESIGN NEW, BLG	DRAWN BLG	APPROVED	DATE 04/27/01	SCALE NOTED	SHEET 2 OF 3
--------------------	--------------	----------	------------------	----------------	-----------------------



SCALE  
 1" = 60'  
 = IRON

**BENCHMARK**  
 City of Wichita Benchmark Disc.  
 located North and East of the intersection  
 intersection of 119th St. West and Pawnee.  
 Elev. = 148.63 City Datum  
 = 1336.03 NGVD

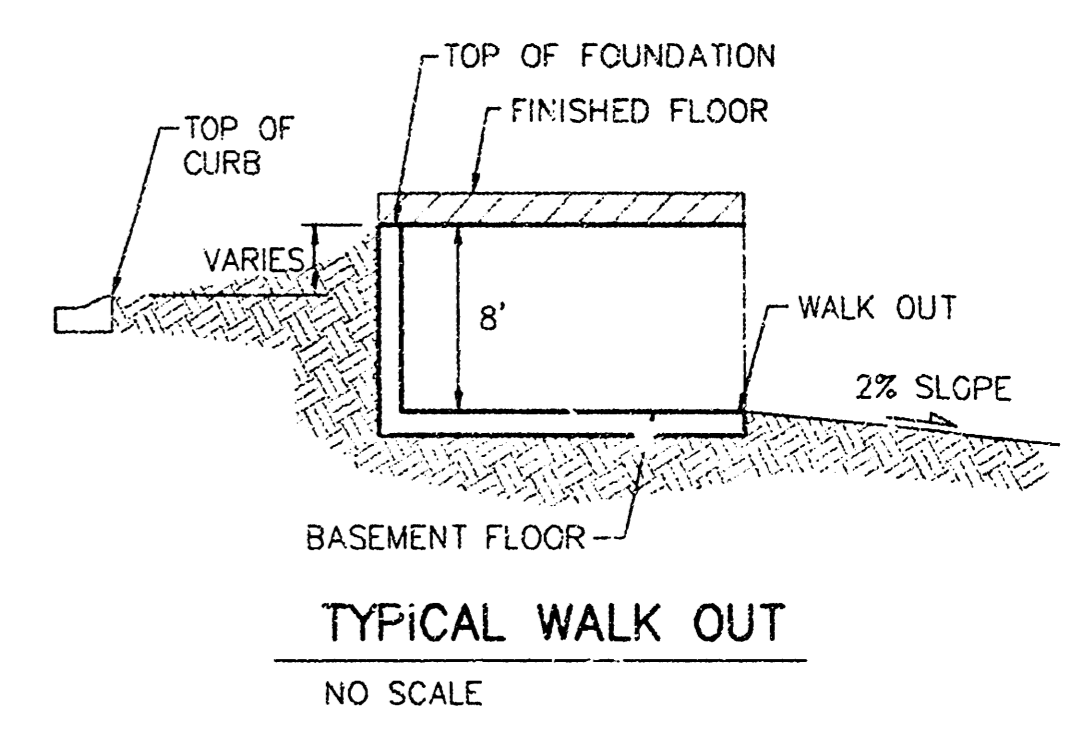
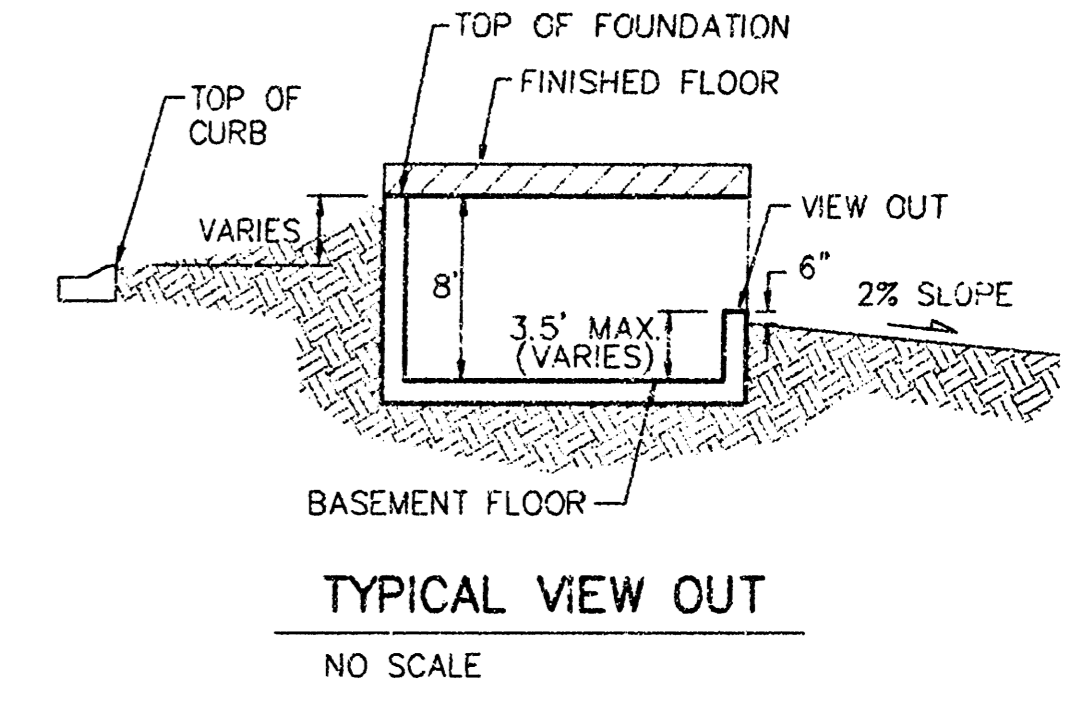
**NOTE:**  
 Minimum building pad elevation  
 for the lowest opening to the  
 structures on all lots in this  
 subdivision shall be 148.7 city  
 datum (1334.1 NGVD).

**NOTE:**  
 All lots within Flat Creek Addition  
 shall have a 5 foot interior  
 sideyard setback.

**NOTE:**  
 Proposed top of foundation are shown  
 on plan. Contractor to set finish floor  
 elevation.

All street elevations shown on plans  
 are for top of curb (full height).

View-out elevations are denoted as  
 XX.X V.O.  
 Walk-out elevations are denoted as  
 XX.X W.O.  
 CONTOUR INTERVAL = 1 FT.



REVISED 8/19/02 BY AEG PER NBW

**FLAT CREEK ADDITION**  
**GRADING PLAN**  
 WICHITA, KANSAS

**BAUGHMAN COMPANY P.A.**  
 ENGINEERING, SURVEYING, & PLANNING  
 319-262-7221 • 319 ELLIS • WICHITA, KANSAS 67211

DESIGN NEW,BLG	DRAWN BLG	APPROVED	DATE 04/27/01	SCALE NOTED	SHEET 3 OF 3
-------------------	--------------	----------	------------------	----------------	-----------------------

SE COR. GOV'T. LOT 4, SW1/4,  
 SEC. 31, TWP. 27-S, R-7-W