

# PROPOSED GRADING PLAN



SCALE:  
1" = 60'  
• = IRON

**BENCHMARK**  
City of Wichita Benchmark Disc.  
located North and East of the intersection  
of 119th St. West and Pawnee.  
Elev. = 148.68 City Datum  
= 1336.08 NGVD

**NOTE:**  
Minimum building pad elevation  
for the lowest opening to the  
structures on all lots in this  
subdivision shall be 146.7 city  
datum (1334.1 NGVD).

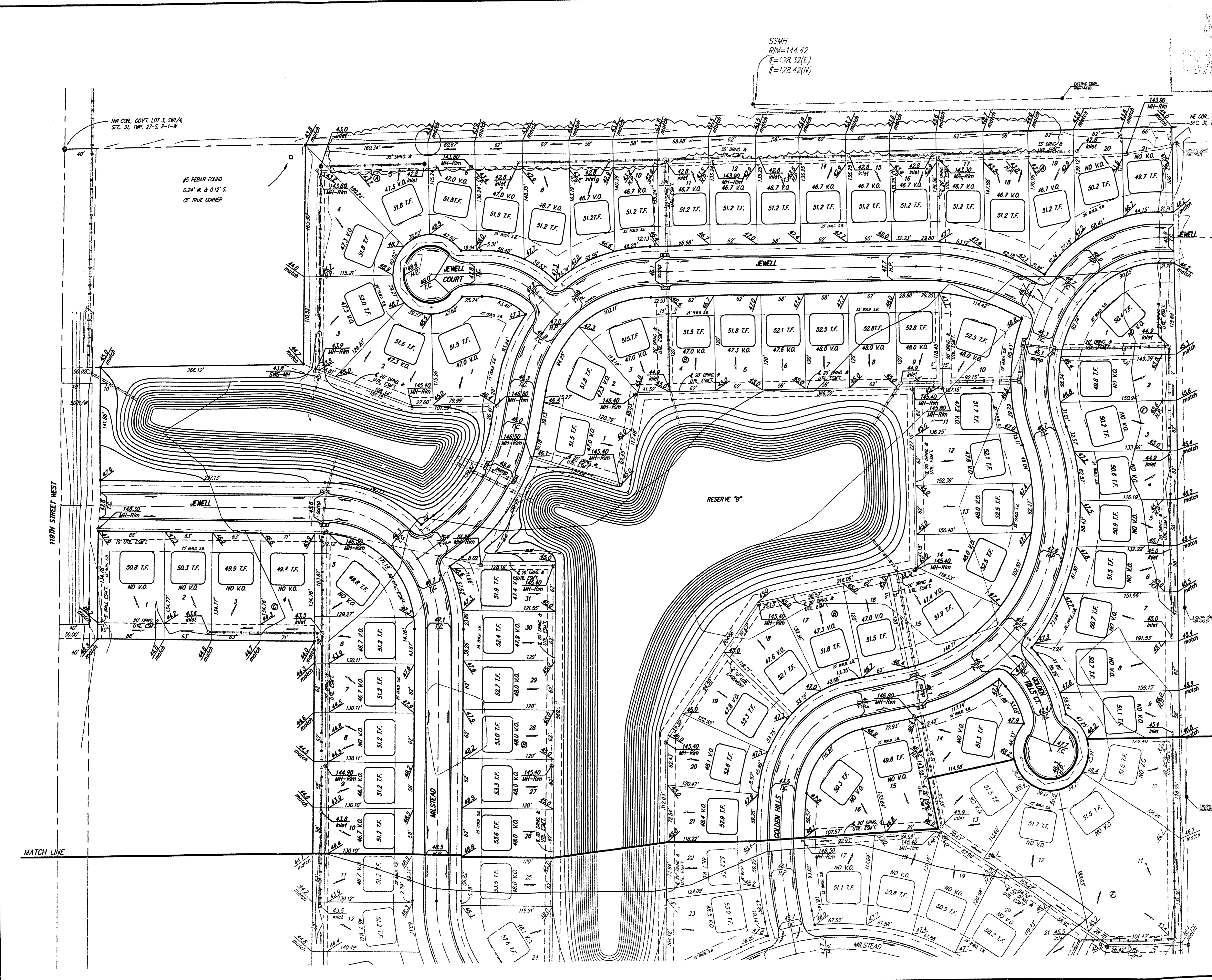
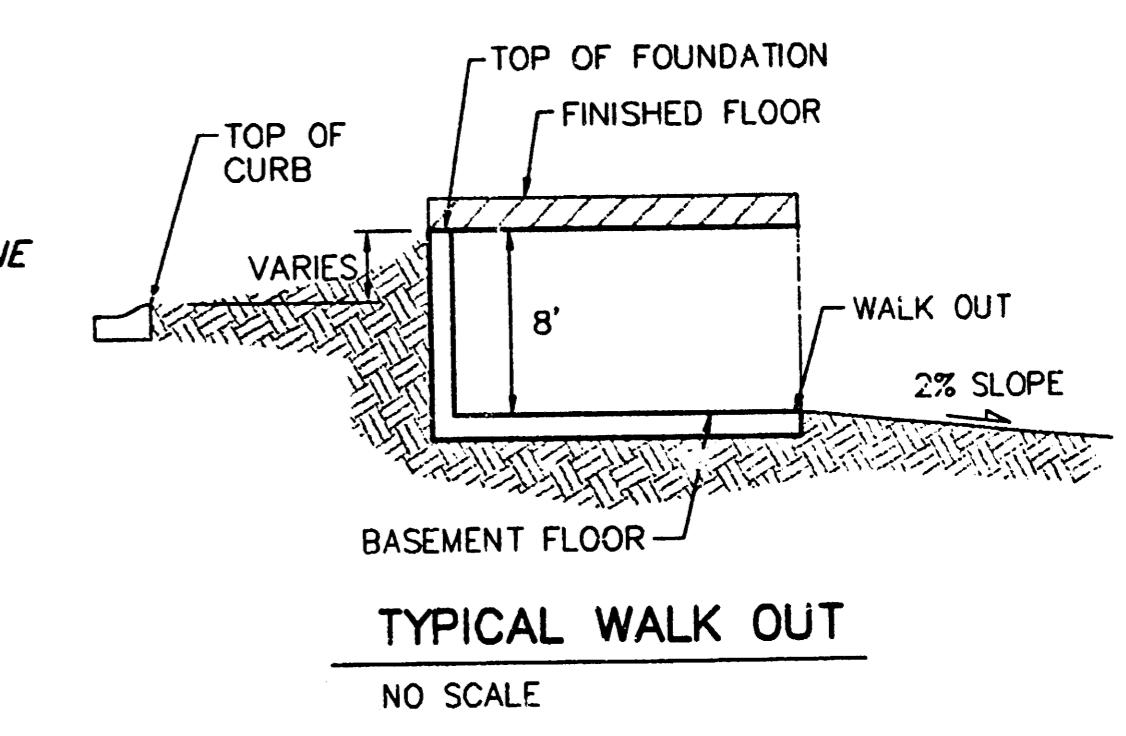
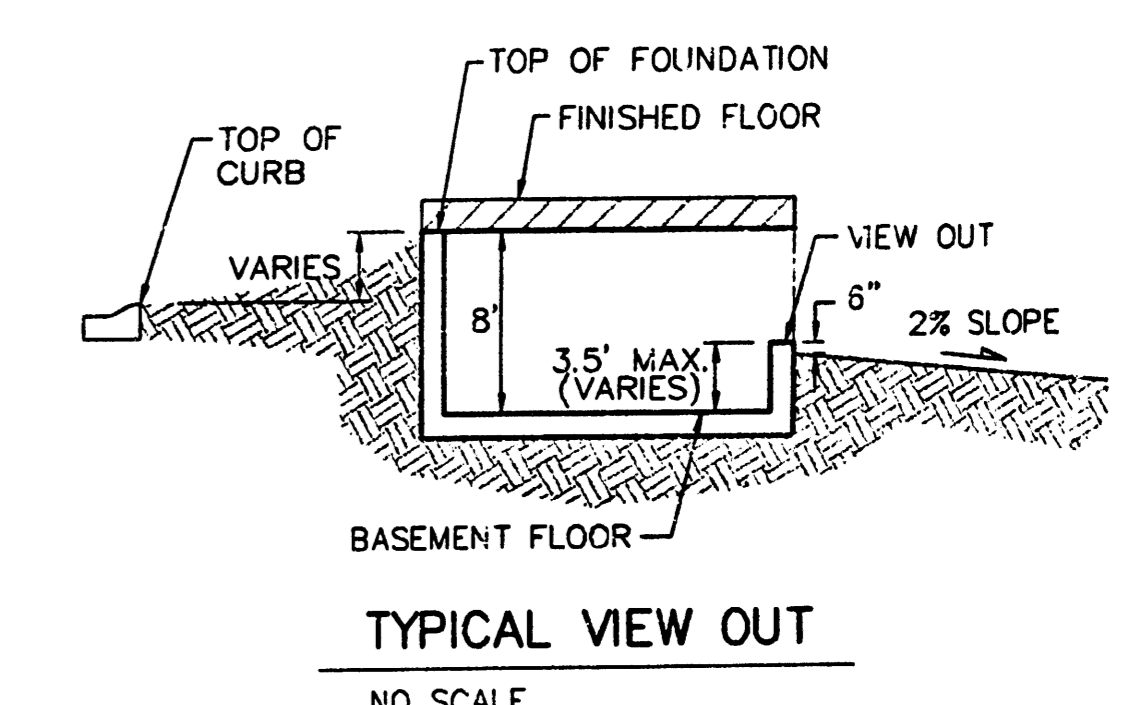
**NOTE:**  
All lots within Flat Creek Addition  
shall have a 5 foot interior  
sideway setback.

**NOTE:**  
Proposed top of foundation are shown  
on plans. Contractor to set finish floor  
elevation.

All street elevations shown on plans  
are for top of curb (full height).

View-out elevations are denoted as  
XX.X V.O.  
Walk-out elevations are denoted as  
XX.X W.O.

CONTOUR INTERVAL = 1 FT.



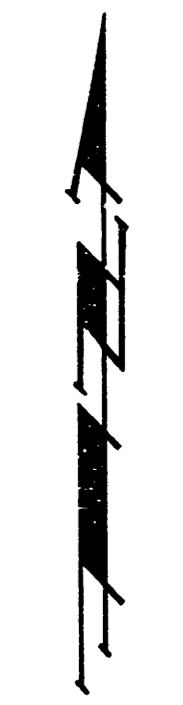
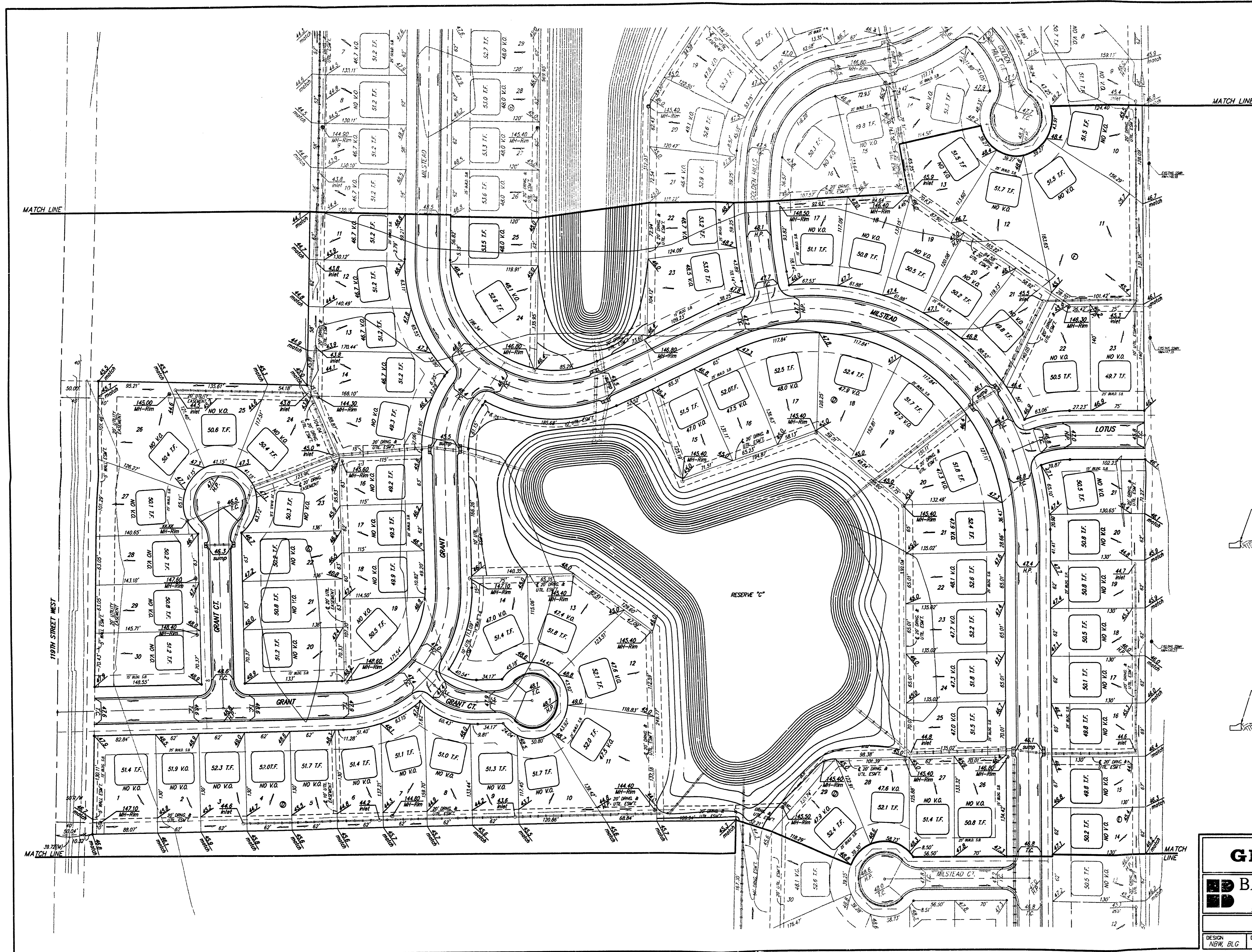
Rev. Lots 1-21, DR. A, 04Dec2001, BLG

**FLAT CREEK ADDITION GRADING PLAN**  
WICHITA, KANSAS

**BAUGHMAN COMPANY P.A.**  
ENGINEERING, SURVEYING, & PLANNING  
316-262-7271 • 315 ELLIS • WICHITA, KANSAS 67211

DESIGN NBW,BLG	DRAWN BLG	APPROVED	DATE 04/27/01	SCALE NOTED	SHEET 1
					OF 3

HEAT CABS, IMPROVED FROM 2001, WITH DRAINAGE REVISIONS



SCALE:  
1" = 60'  
• = IRON

**BENCHMARK**  
City of Wichita Benchmark Disc.  
located North and East of the intersection  
of 119th St. West and Pawnee.  
Elev. = 143.68 City Datum  
= 1336.08 NGVD

**NOTE:**  
Minimum building pad elevation  
for the lowest opening to be  
structures on all lots in this  
subdivision shall be 146.7 city  
datum (1334.1 NGVD).

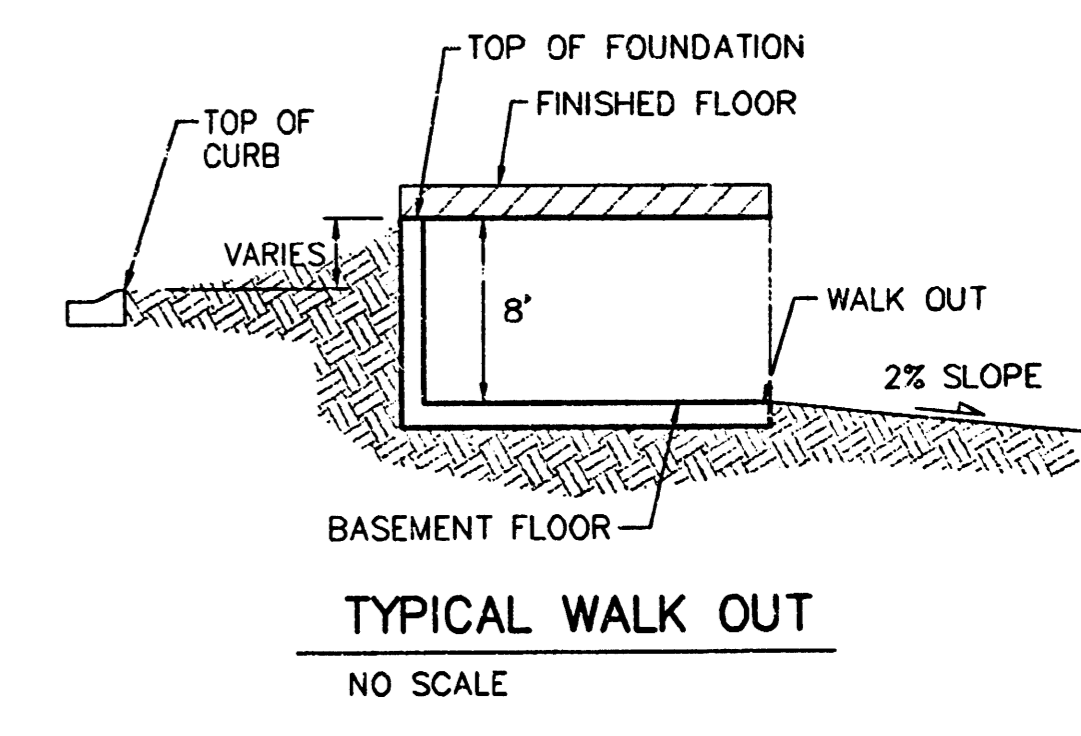
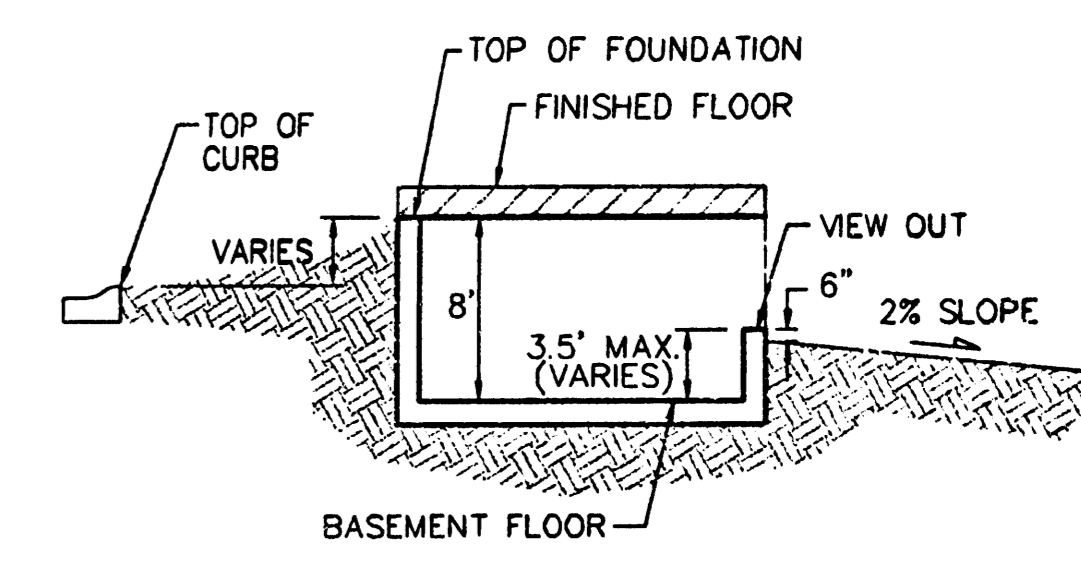
**NOTE:**  
All lots within Flat Creek Addition  
shall have a 5 foot wide x  
sidewalk setback.

**NOTE:**  
Proposed top of foundation are shown  
on plans. Contractor to set finish floor  
elevation.

All street elevations shown on plans  
are for top of curb (full height).

View-out elevations are denoted as  
XXX.X V.O.  
Walk-out elevations are denoted as  
XX.X W.O.

CONTOUR INTERVAL = 1 FT.

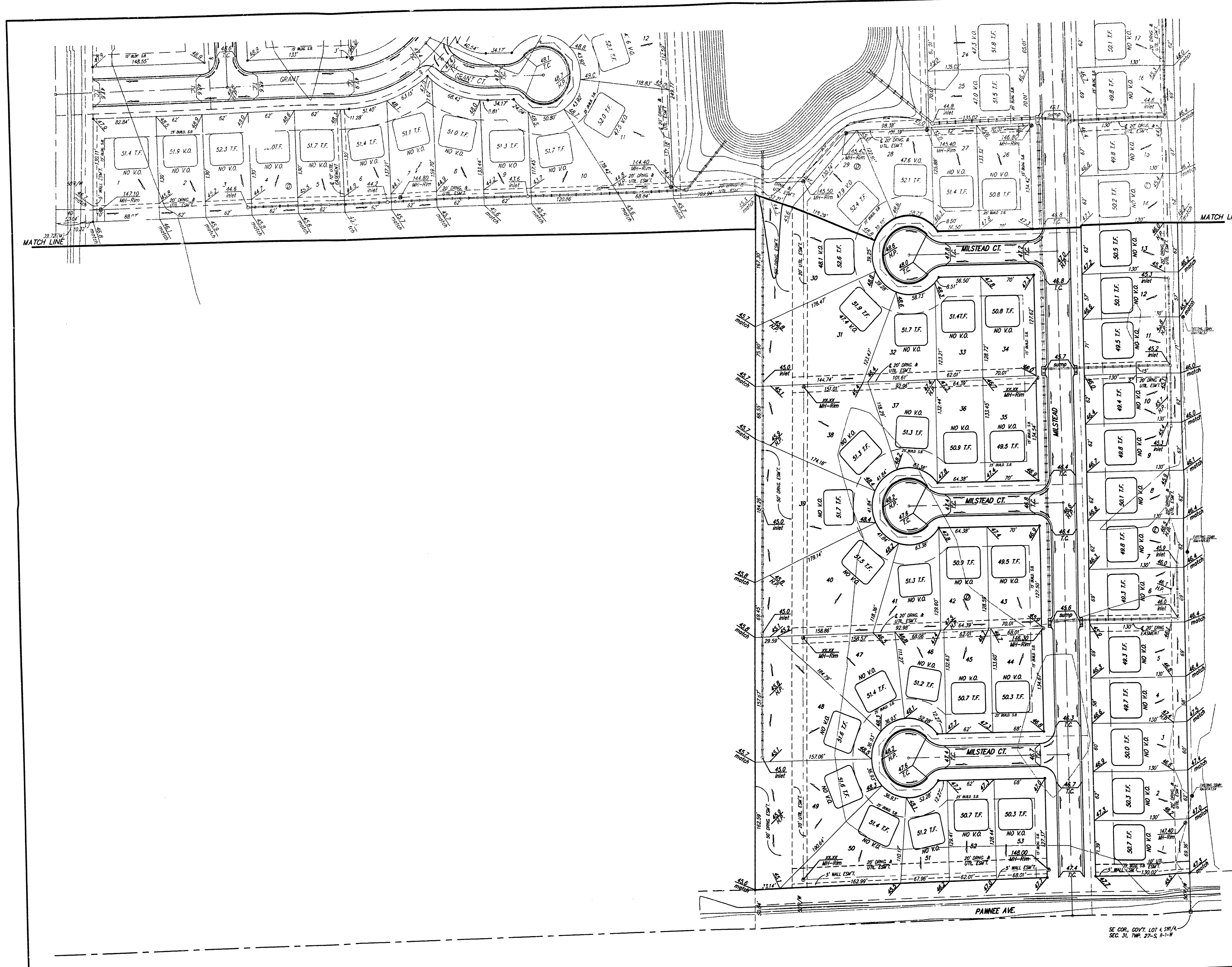


**FLAT CREEK ADDITION**  
**GRADING PLAN**  
WICHITA, KANSAS

**BAUGHMAN COMPANY P.A.**  
ENGINEERING, SURVEYING, & PLANNING  
316-282-7271 • 315 ELLIS • WICHITA, KANSAS 67211

DESIGN		DRAWN		APPROVED		DATE		SCALE		SHEET	
NBW, BLC		BLC				04/27/01		NOTED		2 OF 3	

PROJECT NUMBER \_\_\_\_\_ SHEET \_\_\_\_\_ OF \_\_\_\_\_



SCALE:  
1" = 60'  
• = IRON

**BENCHMARK**  
City of Wichita Benchmark Disc.  
located North and East of the intersection  
of 119th St. West and Pannee.  
Elev. = 148.65 City Datum  
= 1336.08 NGVD

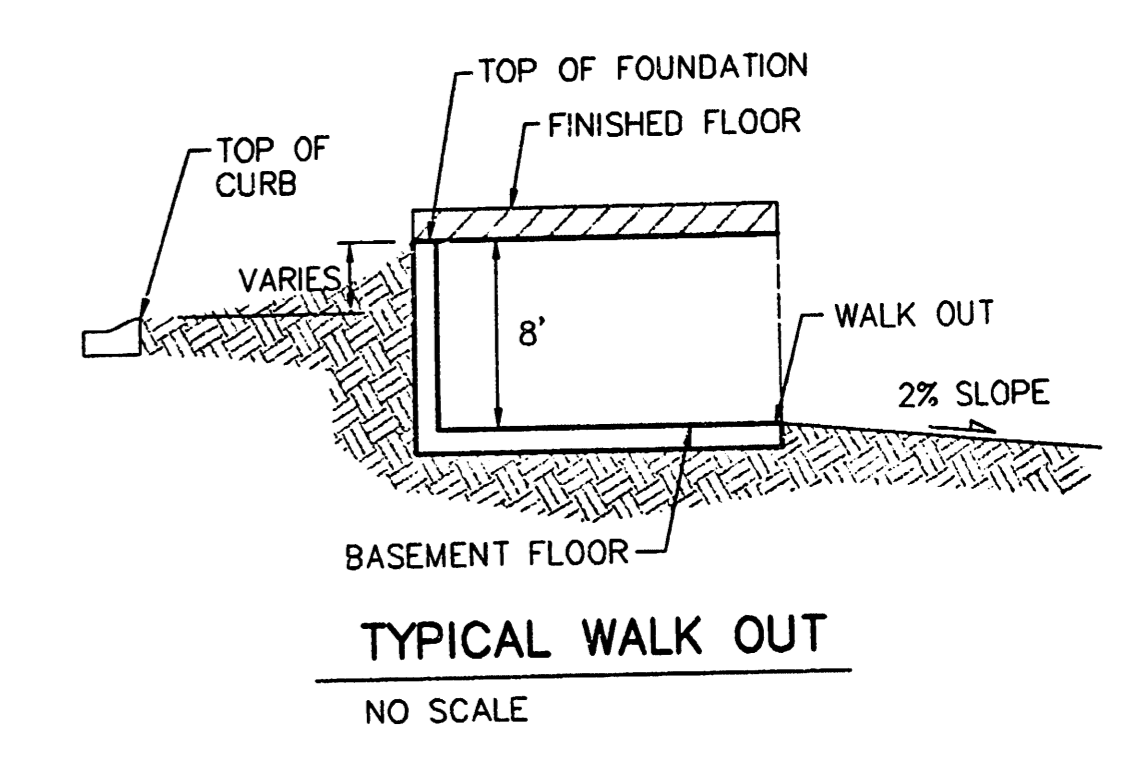
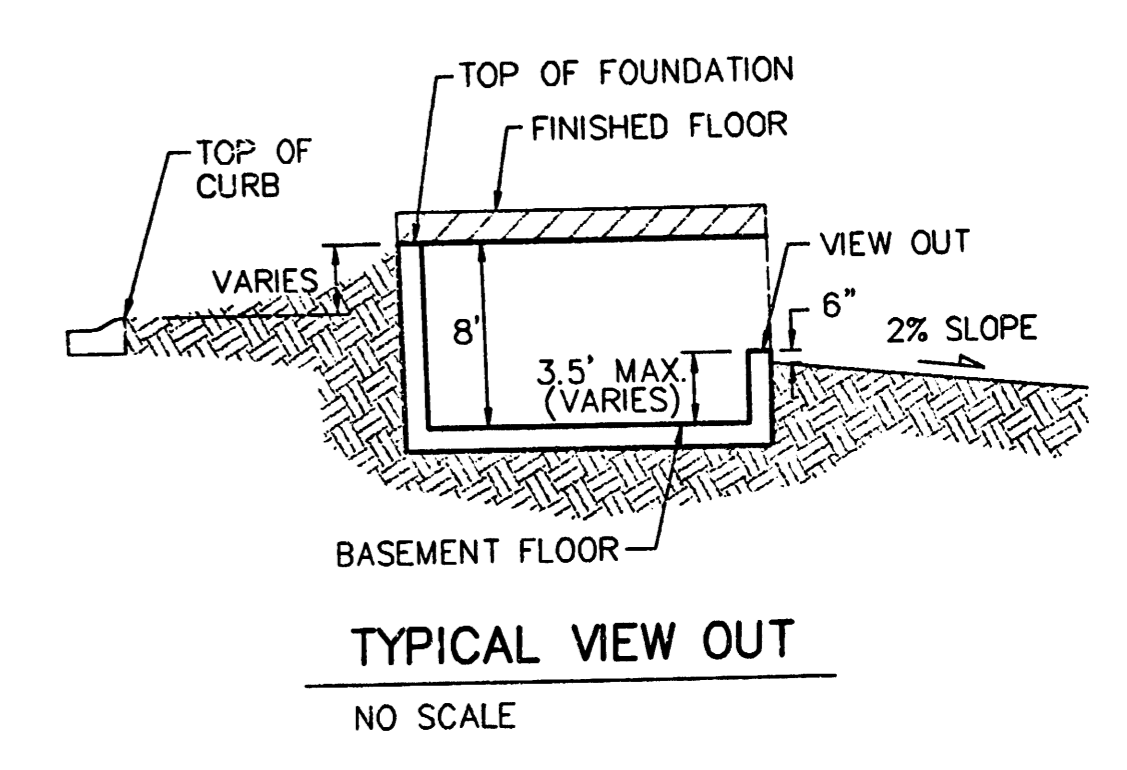
**NOTE:**  
Minimum building pad elevation  
for the lowest opening to the  
structures on all lots in this  
subdivision shall be 146.7 city  
datum (1334.1 NGVD).

**NOTE:**  
All lots within Flat Creek Addition  
shall have a 5 foot interior  
sideyard setback.

**NOTE:**  
Proposed top of foundation are shown  
on plans. Contractor to set finish floor  
elevation.

All street elevations shown on plans  
are for top of curb (full height).

View-out elevations are denoted as  
XX.X V.O.  
Walk-out elevations are denoted as  
XX.X W.O.  
CONTOUR INTERVAL = 1 FT.



**FLAT CREEK ADDITION**  
**GRADING PLAN**  
WICHITA, KANSAS

**BAUGHMAN COMPANY P.A.**  
ENGINEERING, SURVEYING, & PLANNING  
316-282-7271 • 315 ELLIS • WICHITA, KANSAS 67211

PROJECT NUMBER \_\_\_\_\_

DESIGN NGW,BLG	DRAWN BLG	APPROVED	DATE 04/27/01	SCALE NOTED	SHEET 3	OF 3
-------------------	--------------	----------	------------------	----------------	------------	---------

SE COR. COV'T. LOT 4, 5 1/4  
SEC. 31, TWP. 27-S, R-1-E