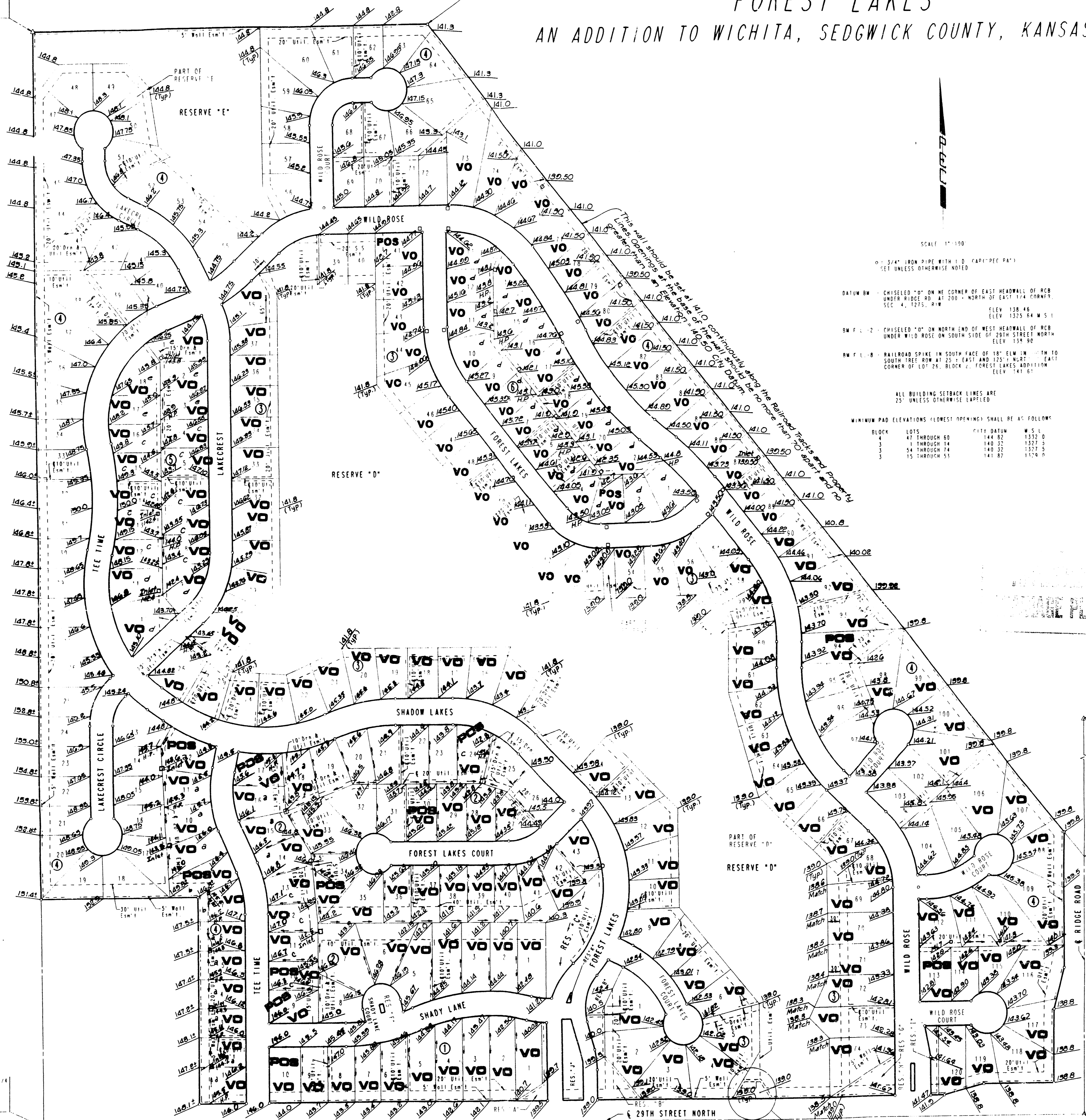


FOREST LAKES

AN ADDITION TO WICHITA, SEDGWICK COUNTY, KANSAS

N.W. CORNER, S.E. 1/4
SEC. 33, 1765, R1W
OF THE 6TH P.M.
FOUND 1 1/2" BAR

FOUND 5/8" BAR
WITH 1.0" CAP "MACOM"



SCALE 1"=100'

0.1" 3/4" IRON PIPE WITH 1.0" (PART-PEC PART)
SEE UNLESS OTHERWISE NOTED

DATUM BM CHISELED "D" ON NE CORNER OF EAST HEADWALL OF RCB UNDER WILDOSE RD. 41' 100" NORTH OF EAST 1/4 CORNER, SEC. 4, 1275, R1W ELEV. 138.46
ELEV. 1325.84 M.S.I.

BM F. 1. 2 CHISELED "D" ON NORTH END OF WEST HEADWALL OF RCB UNDER WILDOSE ON SOUTH SIDE OF 29TH STREET NORTH ELEV. 139.98

BM F. 1. 8 RAILROAD SPIKE IN SOUTH FACE OF 18" ELM 1/4" W. TO SOUTH TREE ROW AT 25' EAST AND 125' N. EAST CORNER OF LOT 26, BLOCK 2, FOREST LAKES ADDITION ELEV. 141.51

ALL BUILDING SETBACK LINES ARE 25' UNLESS OTHERWISE Labeled

MINIMUM PAD ELEVATIONS (FOREST OPENINGS) SHALL BE AS FOLLOWS:

BLOCK	LOTS	FIN. DATUM	M.S.I.
4	47 THROUGH 60	144.82	1372.0
3	1 THROUGH 14	140.25	1377.5
5	54 THROUGH 74	140.22	1377.5
3	15 THROUGH 53	141.87	1374.0

S.W. CORNER, S.E. 1/4
SEC. 33, 1765, R1W
OF THE 6TH P.M.
FOUND CHIS. "D" ON LIMESTONE

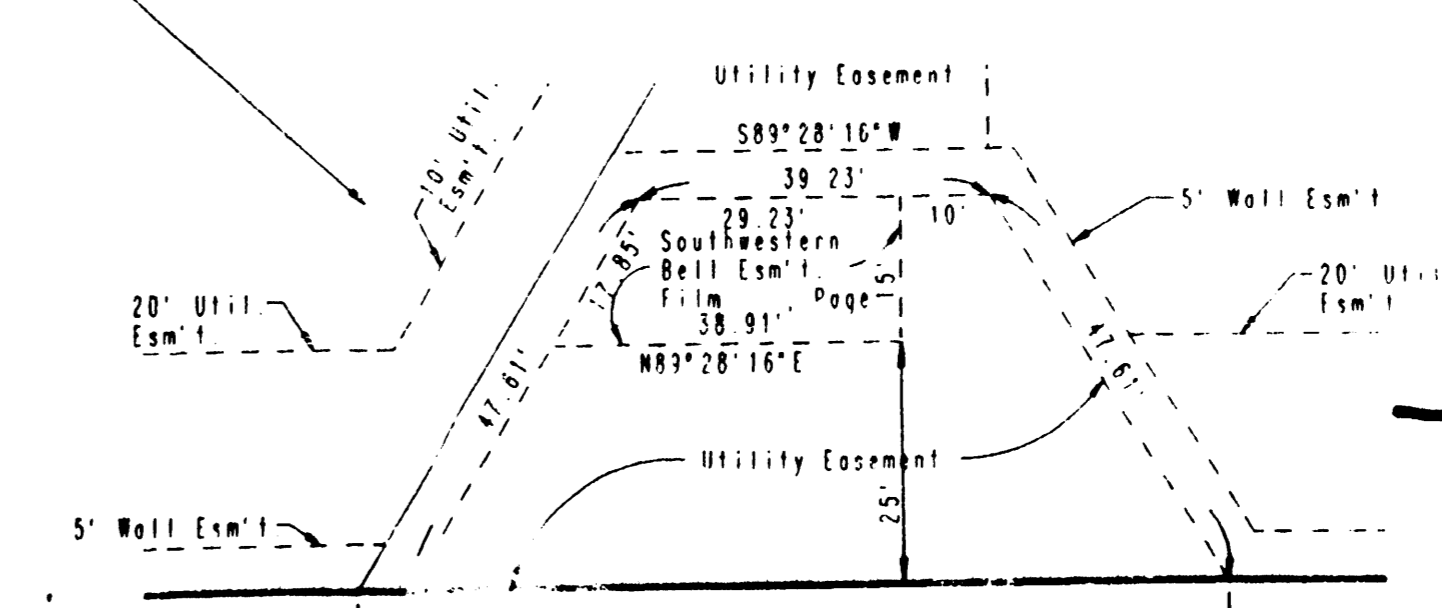
NE CORNER, S.E. 1/4
SEC. 33, 1765, R1W
OF THE 6TH P.M.
FOUND 1 1/2" IRON PIPE IN THIMBLE

VO - VIEWOUT
POS VO - POSSIBLE VIEWOUT

DETAILED DRAINAGE PLAN
PHASE 1, 7 & 8
PHASES 2&3
PHASE 4 REVISED

a = Low opening 146.5 or higher.
b = Low opening 147.5 or higher.
c = Low opening 148.0 or higher.
d = Low opening 148.5 or higher.
e = Low opening 147.5 or higher.

SCALE: 1"=100'



Forest Lakes Addition

Revised 8-7-07
Revised 3-19-08
Revised 9-11-08
Revised 1-23-09
Revised 3-30-09