

FOREST LAKES

AN ADDITION TO WICHITA, SEDGWICK COUNTY, KANSAS

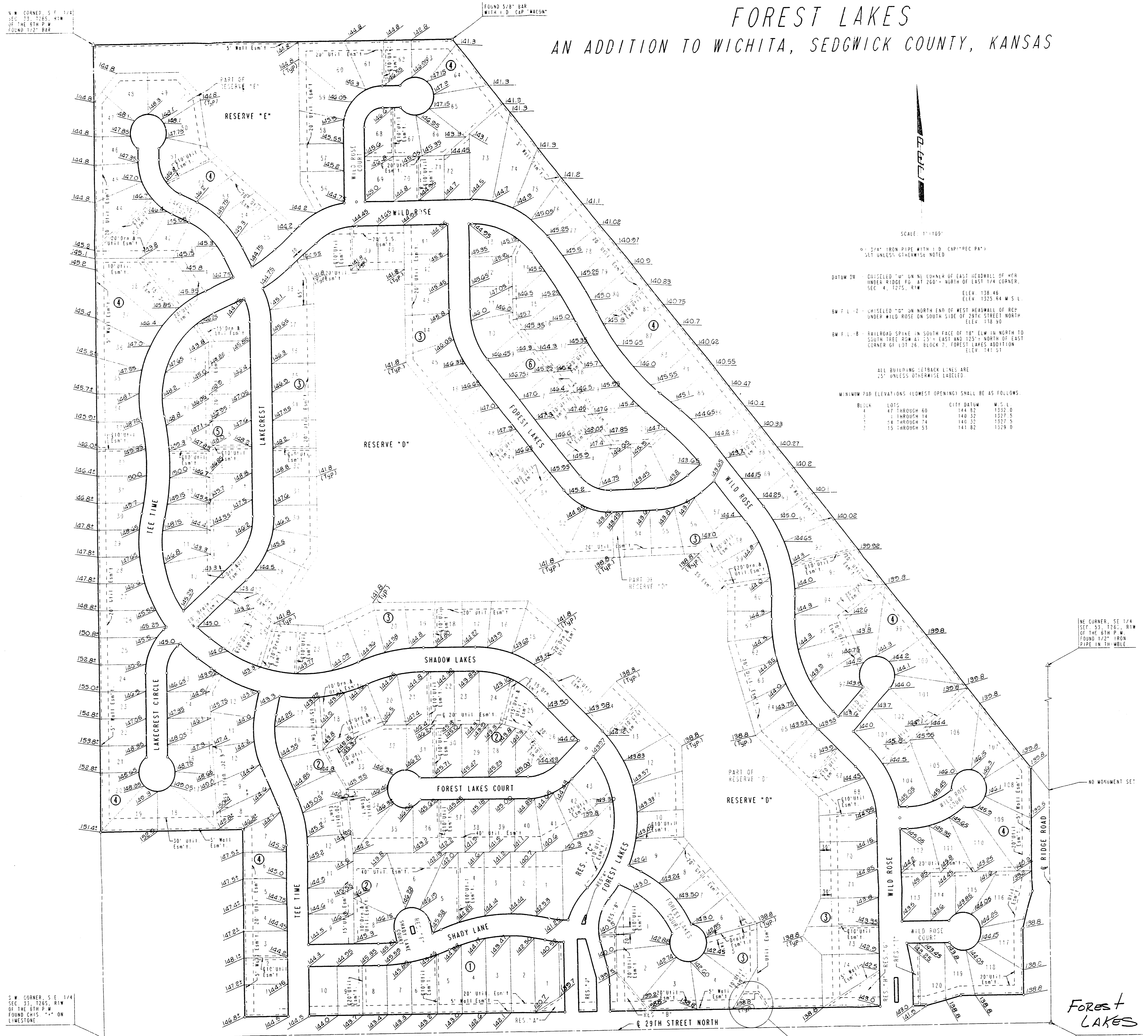
N.W. CORNER, S.E. 1/4
SEC. 33, T26S, R14W
OF THE 6TH P.M.
FOUND 1/2" BAR

FOUND 5/8" BAR
WITH 1" O. CAP "WAGON"

S.W. CORNER, S.E. 1/4
SEC. 33, T26S, R14W
OF THE 6TH P.M.
FOUND CHIS. "L" ON
LIMESTONE

Forest Lakes

S.E. CORNER, S.E. 1/4
SEC. 33, T26S, R14W
OF THE 6TH P.M.
FOUND 5/8" BAR
IN TRIMBLE



SCALE 1"=100'

3/4" IRON PIPE WITH 1" O. CAP "REC PAT"
SET UNLESS OTHERWISE NOTED

DATUM ON CHISELED "0" ON NE CORNER OF EAST HEADWALL OF WFR
UNDER RIDGE RD. AT 200' NORTH OF EAST 1/4 CORNER,
SEC. 4, T27S, R14W ELEV. 138.46
ELEV. 1325.64 M.S.L.

BM F.L. 12 CHISELED "0" ON NORTH END OF WEST HEADWALL OF RCP
UNDER WILD ROSE ON SOUTH SIDE OF 29TH STREET NORTH
ELEV. 138.90

BM F.L. 18 RAILROAD SPIKE IN SOUTH FACE OF 18" ELM. IN NORTH
SOUTH TREE ROW AT 131' EAST AND 123' NORTH OF EAST
CORNER OF LOT 26, BLOCK 7, FOREST LAKES ADDITION
ELEV. 141.51

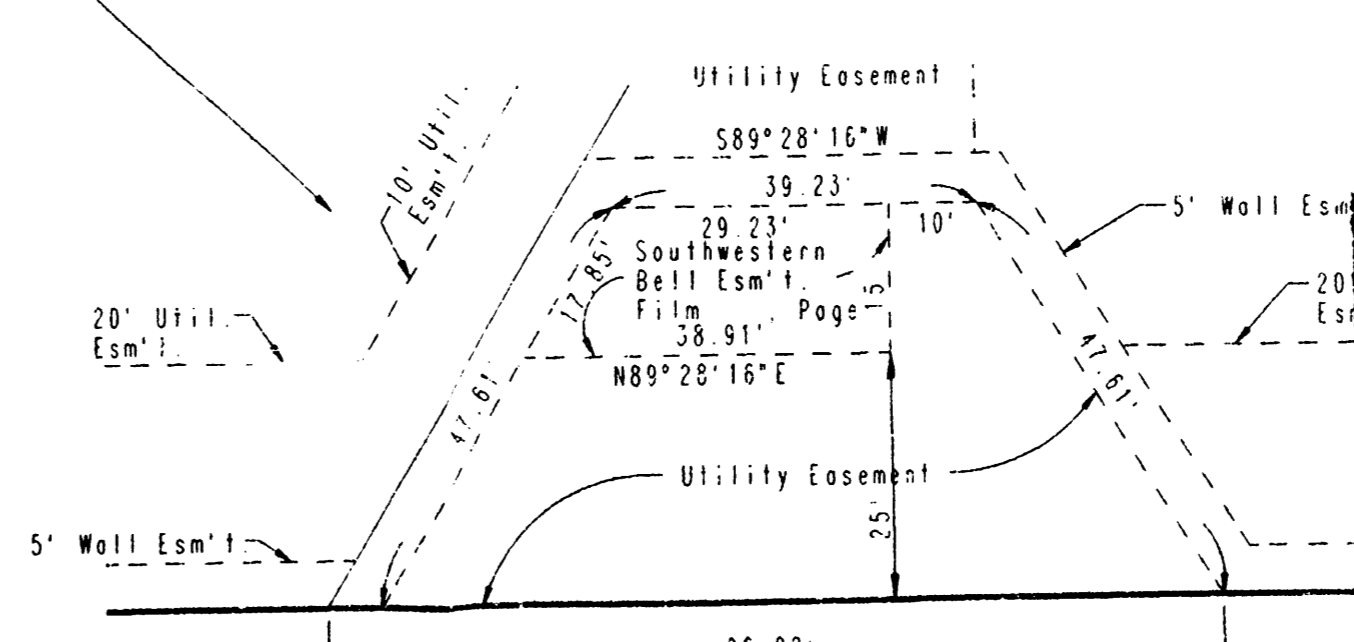
ALL BUILDING SETBACK LINES ARE
25' UNLESS OTHERWISE LABELED

MINIMUM PAD ELEVATIONS (LOWEST OPENING) SHALL BE AS FOLLOWS

BLOCK	LOTS	CITY DATUM	M.S.L.
1	47 THROUGH 60	144.52	1322.0
1	1 THROUGH 14	144.32	1327.5
1	54 THROUGH 74	140.35	1327.5
1	15 THROUGH 53	141.82	1329.0

NE CORNER, SE 1/4
SEC. 33, T26S, R14W
OF THE 6TH P.M.
FOUND 1/2" IRON
PIPE IN TRIMBLE

NO MONUMENT SET



**APPROVED
DRAINAGE PLAN**

DETAILED DRAINAGE PLAN