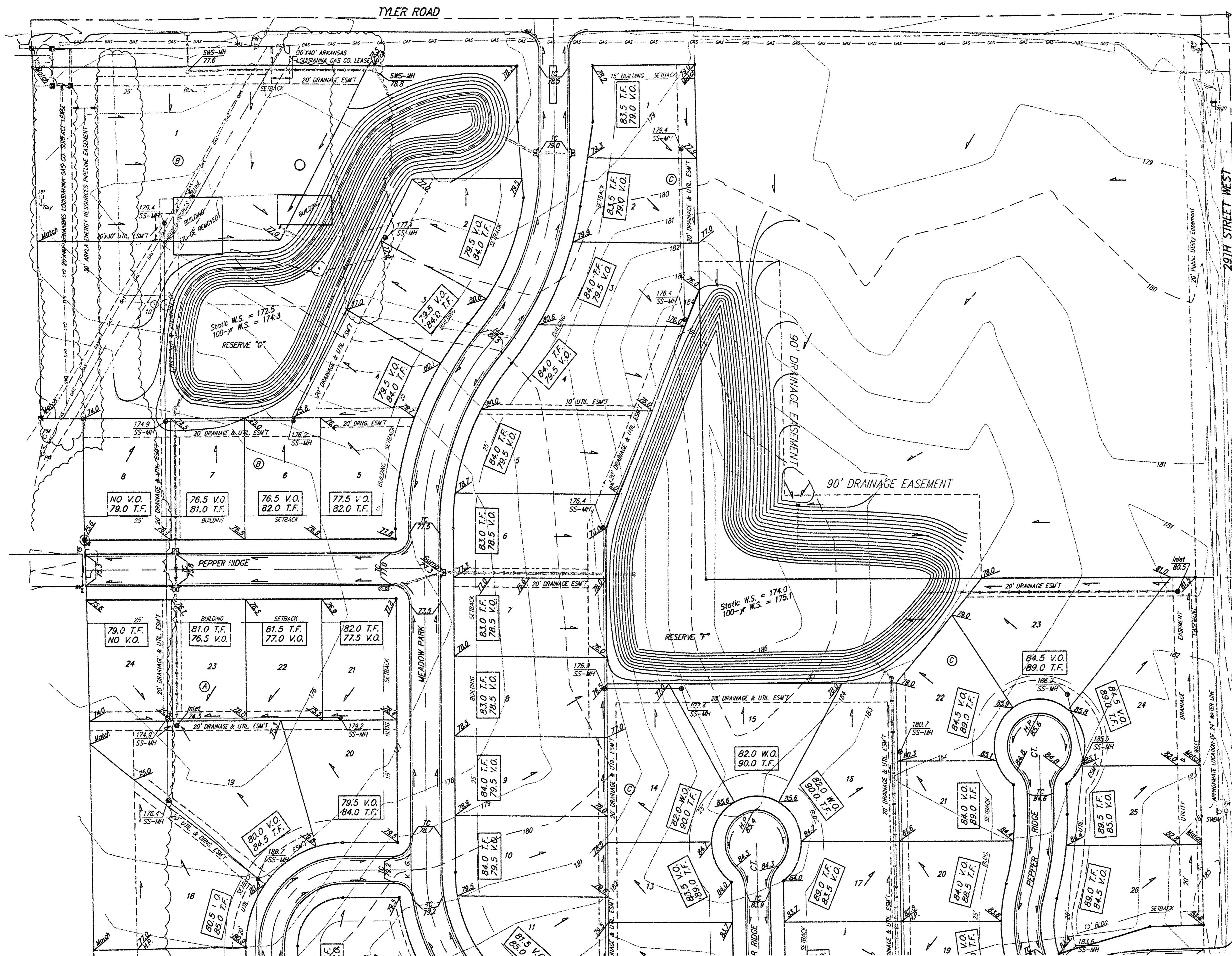
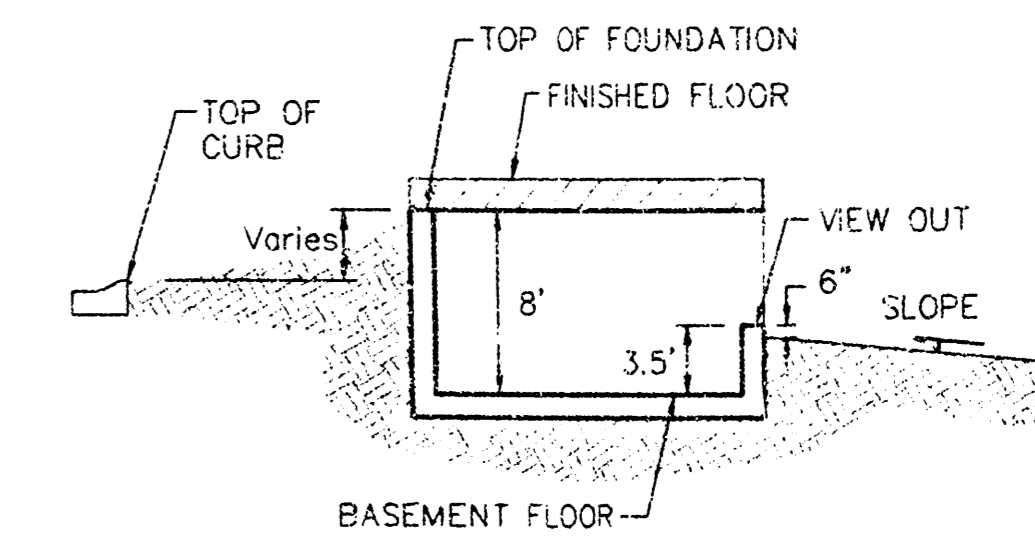


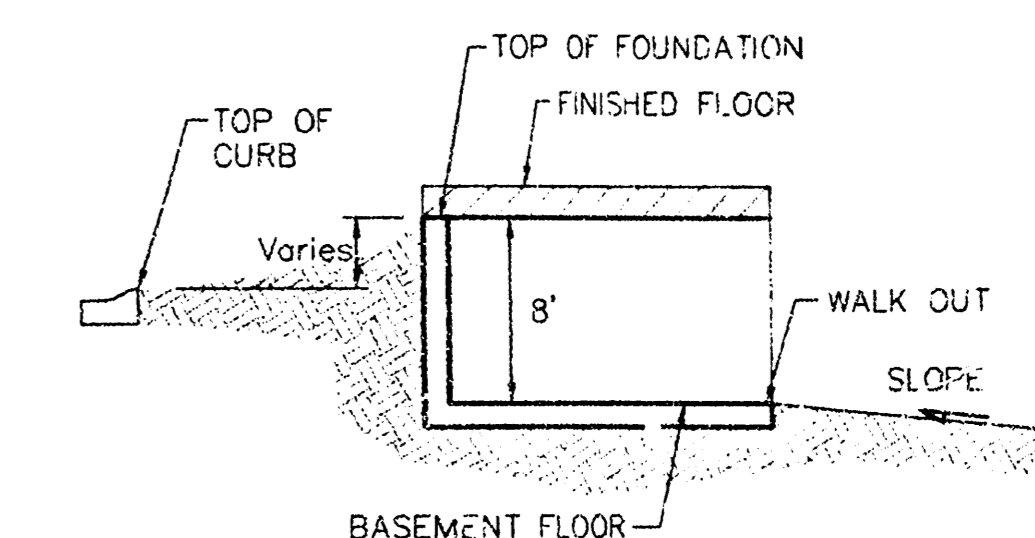
BENCHMARK:
City of Wichita disc northwest wingwall
at Tee Time and 23rd Street North.
Elev. = 142.20 NGVD



SCALE: 1" = 60'
• = IRON



TYPICAL VIEW OUT
NO SCALE



TYPICAL WALK OUT
NO SCALE

NOTES:

All drainage easements, rights-of-way, or reserves shall remain at established grades or as modified with the approval of the City Engineer of the City of Wichita, Kansas. No obstructions which impede the flow of this drainage system shall be allowed.

Proposed top of foundation elevations are shown on plans. Contractor to set finished floor elevations.

All street elevations shown on plans are for top of curb (full-height). Typically roll-type curbs are constructed. Deduct 0.25' from top of curb (full-height).

This Grading Plan is designed with View-Out and Walk-Out Basements. Elevations shown at Rear of House (XX.X V.O. and XX.X W.O.) are for minimum opening.

All elevations shown on plans are City of Wichita Datum.

This grading plan has been submitted prior to the plat being recorded by Sedgwick County. Call Baughman Company for the most current grading plan prior to construction.

**APPROVED
DRAINAGE PLAN**

MINIMUM BUILDING PAD ELEVATIONS FOR LOWEST OPENING TO THE STRUCTURES

LOT	BLOCK	ELEVATION
1-6	A	157.0
1-8	B	176.5
3-8, 14-16, 22, 23	C	178.0
1-11	D	166.0

0/2/03 REVISED LOTS 6 & 7, BLOCK C BY AEG

**FOSSIL RIM ESTATES
LOT GRADING PLAN**
CITY OF WICHITA, KANSAS

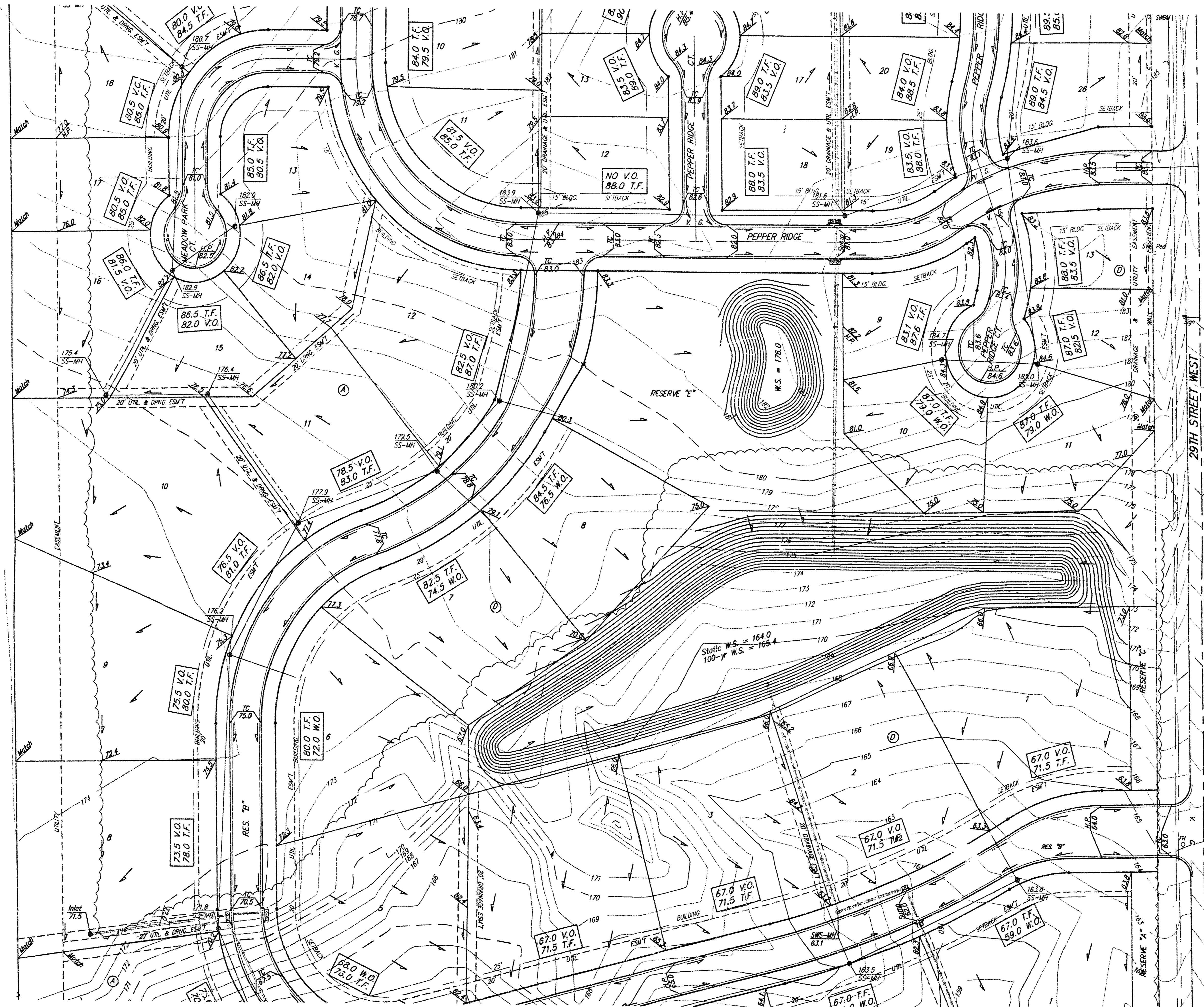
BAUGHMAN COMPANY P.A.
ENGINEERING, SURVEYING, & PLANNING
316-263-7271 • 315 ELLIS • WICHITA, KANSAS 67211

PROJECT NUMBER: _____ SHEET **1** OF **3**

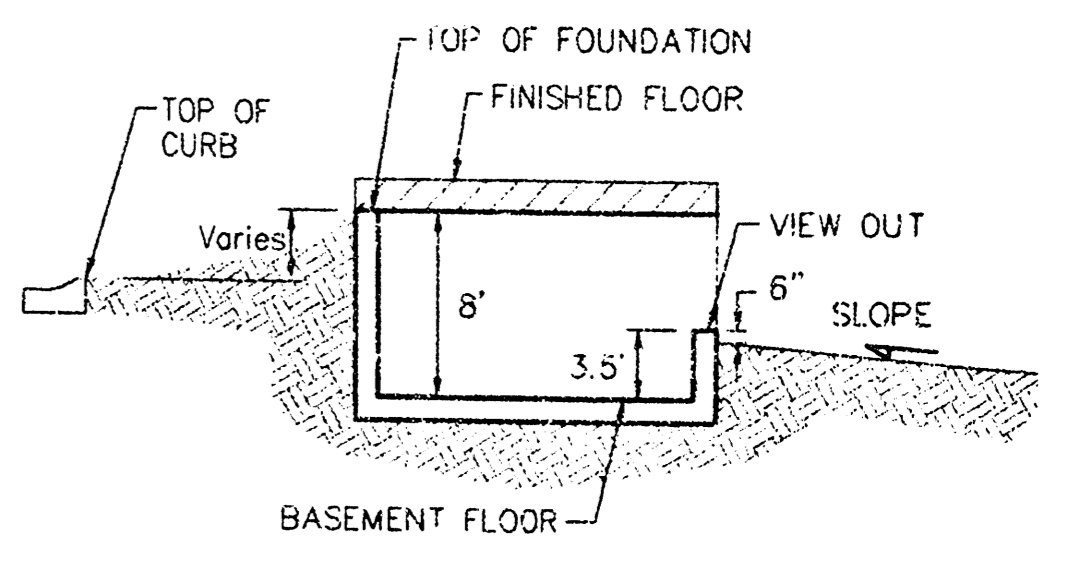
DESIGN: SCL DRAWN: SCL APPROVED: NEW DATE: 02/11/02 SCALE: 1"=60'

RAT CALD WALKED

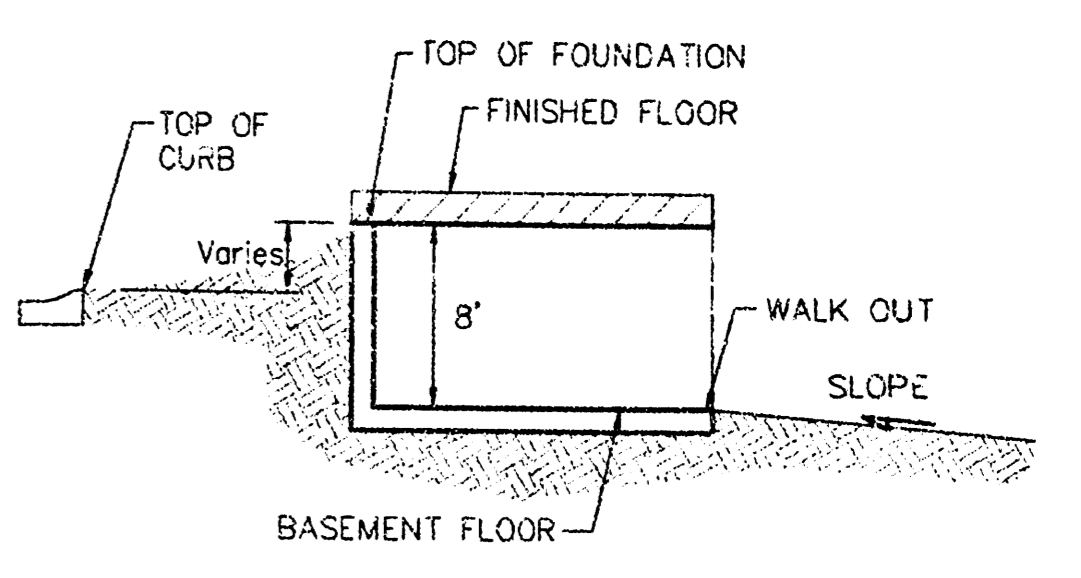
BENCHMARK:
 City of Wichita disc northwest wingwall
 at Tee Time and 29th Street North.
 Elev. = 142.20 NGVD



SCALE: 1" = 60'
 • = IRON



TYPICAL VIEW OUT
 NO SCALE



TYPICAL WALK OUT
 NO SCALE

NOTES:

All drainage easements, rights-of-way, or reserves shall remain at established grades or as modified by the approval of the City Engineer of the City of Wichita, Kansas. No obstructions which impede the flow of this drainage system shall be allowed.

Proposed top of foundation elevations are shown on plans. Contractor to set finished floor elevations.

All street elevations shown on plans are for top of curb (full-height). Typically roll-type curbs are constructed. Deduct 0.25' from top of curb (full-height).

This Grading Plan is designed with View-Out and Walk-Out Basements. Elevations shown at Rear of House (XX.X V.O. and XX.X W.O.) are for minimum opening.

All elevations shown on plans are City of Wichita Datum.

This grading plan has been submitted prior to the plat being recorded by Sedgwick County, Call Baughman Company for the most current grading plan prior to construction.

MINIMUM BUILDING PAD ELEVATIONS FOR LOWEST OPENING TO THE STRUCTURES

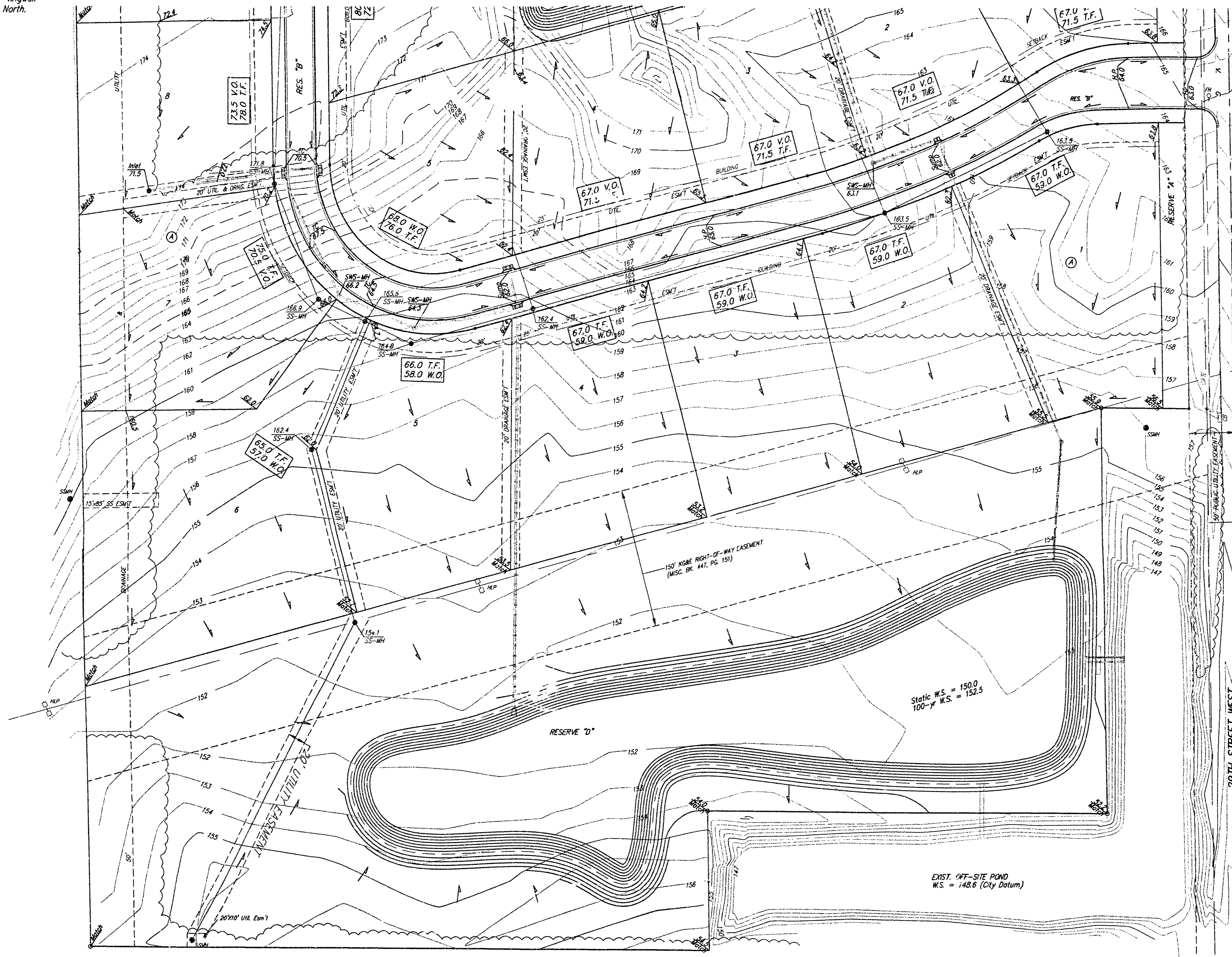
LOT	BLOCK	ELEVATION MSL
1-6	A	157.0
	B	176.5
7-8, 14-16, 22, 23	C	178.0
1-11	D	166.0

FOSSIL RIM ESTATES
LOT GRADING PLAN
 CITY OF WICHITA, KANSAS

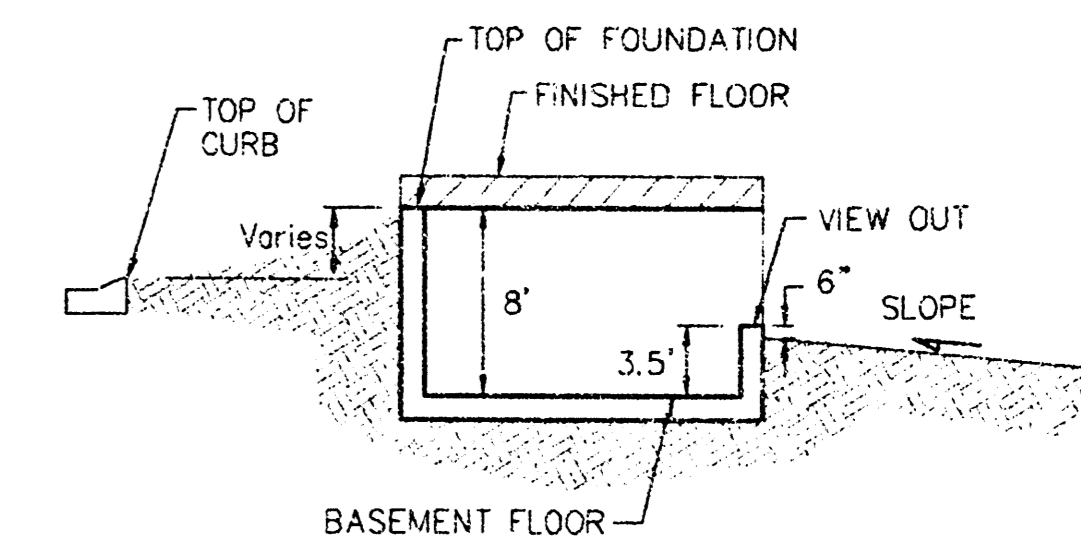
BAUGHMAN COMPANY P.A.
 ENGINEERING, SURVEYING, & PLANNING
 318-252-7271 • 318 ELLIS • WICHITA, KANSAS 67211

PROJECT NUMBER: _____ SHEET: **2**
 OF: **3**
 DESIGN: SCL DRAWN: SCL APPROVED: NEW DATE: 02/11/02 SCALE: 1"=60'

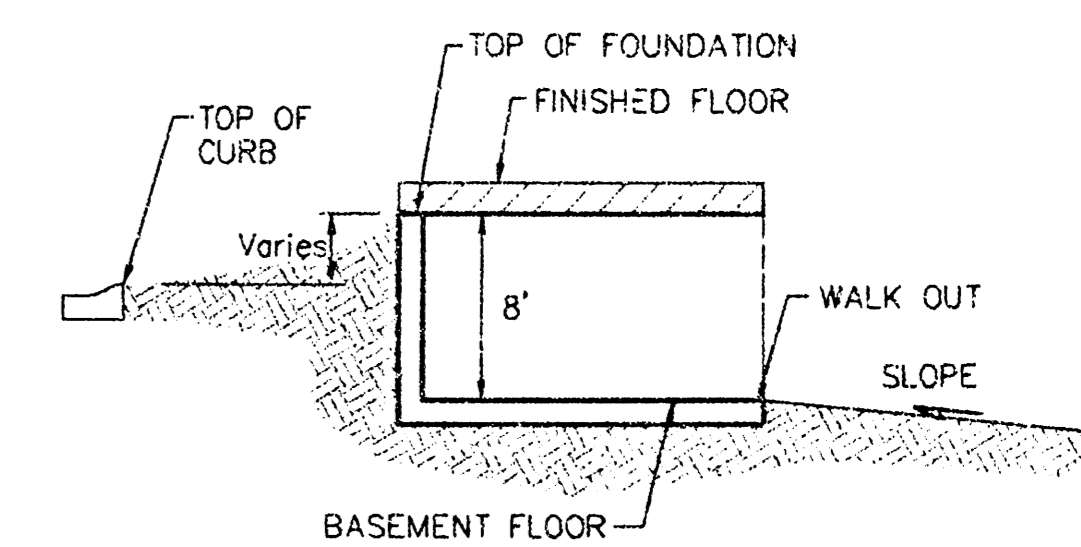
BENCHMARK:
City of Wichita disc nor- t wingwall
of Tee Time and 29th Street North.
Elev. = 142.20 NGVD



SCALE: 1" = 60'
• = IRON



TYPICAL VIEW OUT
NO SCALE



TYPICAL WALK OUT
NO SCALE

NOTES:

All drainage easements, rights-of-way, or reserves shall remain at established grades or as modified with the approval of the City Engineer of the City of Wichita, Kansas. No obstructions which impede the flow of this drainage system shall be allowed.

Proposed top of foundation elevations are shown on plans. Contractor to set finished floor elevations.

All street elevations shown on plans are for top of curb (full-height). Typically rail-type curbs are constructed. Deduct 0.25' from top of curb (full-height).

This Grading Plan is designed with View-Out and Walk-Out Basements. Elevations shown at Rear of House (XX.X V.O. and XX.X W.O.) are for minimum opening.

All elevations shown on plans are City of Wichita Datum.

This grading plan has been submitted prior to the plat being recorded by Sedgwick County. Call Baughman Company for the most current grading plan prior to construction.

MINIMUM BUILDING PAD ELEVATIONS FOR LOWEST OPENING TO THE STRUCTURES

LOT	BLOCK	ELEVATION
		MSL
1-6	A	157.0
1-8	B	176.5
3-8, 14-16, 22, 23	C	178.0
1-11	D	166.0

FOSSIL RIM ESTATES
LOT GRADING PLAN
CITY OF WICHITA, KANSAS

BAUGHMAN COMPANY P.A.
ENGINEERING, SURVEYING, & PLANNING
316-262-7271 • 315 ELLIS • WICHITA, KANSAS 67211

PROJECT NUMBER: _____ SHEET: **3** OF **3**

DESIGN: SCL DRAWN: SCL APPROVED: NEW DATE: 02/11/02 SCALE: T=60'