

BENCHMARKS

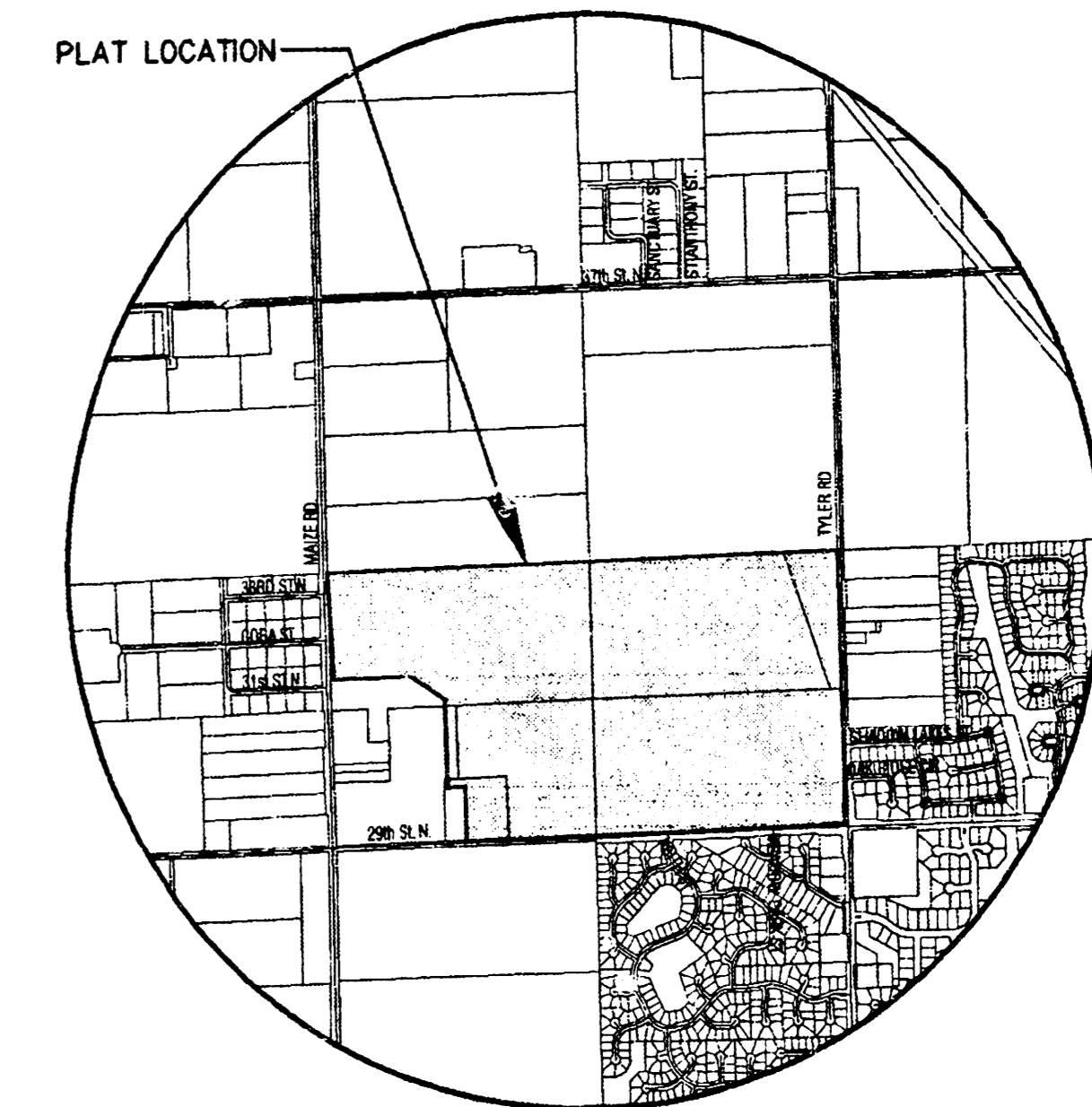
- BM#1 C.O.W. disc 0.5 miles east of Maize Rd. on 29th St. N. 25' ± N. of centering of 29th St. Elev.=160.86
- BM#6 RR Spike in South face of South H-pole 6th H-pole West of Tyler Rd. and 1/2 Mile N. of 29th St. N. Elev.=166.37
- BM#7 PK nail(point numbered 201) in asphalt on bike path 60 feet South of 33rd St. N. on East side of Maize Rd. 28 feet NW of PP. Elev.=163.97
- BM#9 RR sike in NW face of PP N. side of 29th St. N., 6th PP West of C.O.W. Disc. (Disc 1/2 mile East of Maize Rd. Elev.=164.55

NOTES

ALL BACKYARD SWS IS 12" PIPE

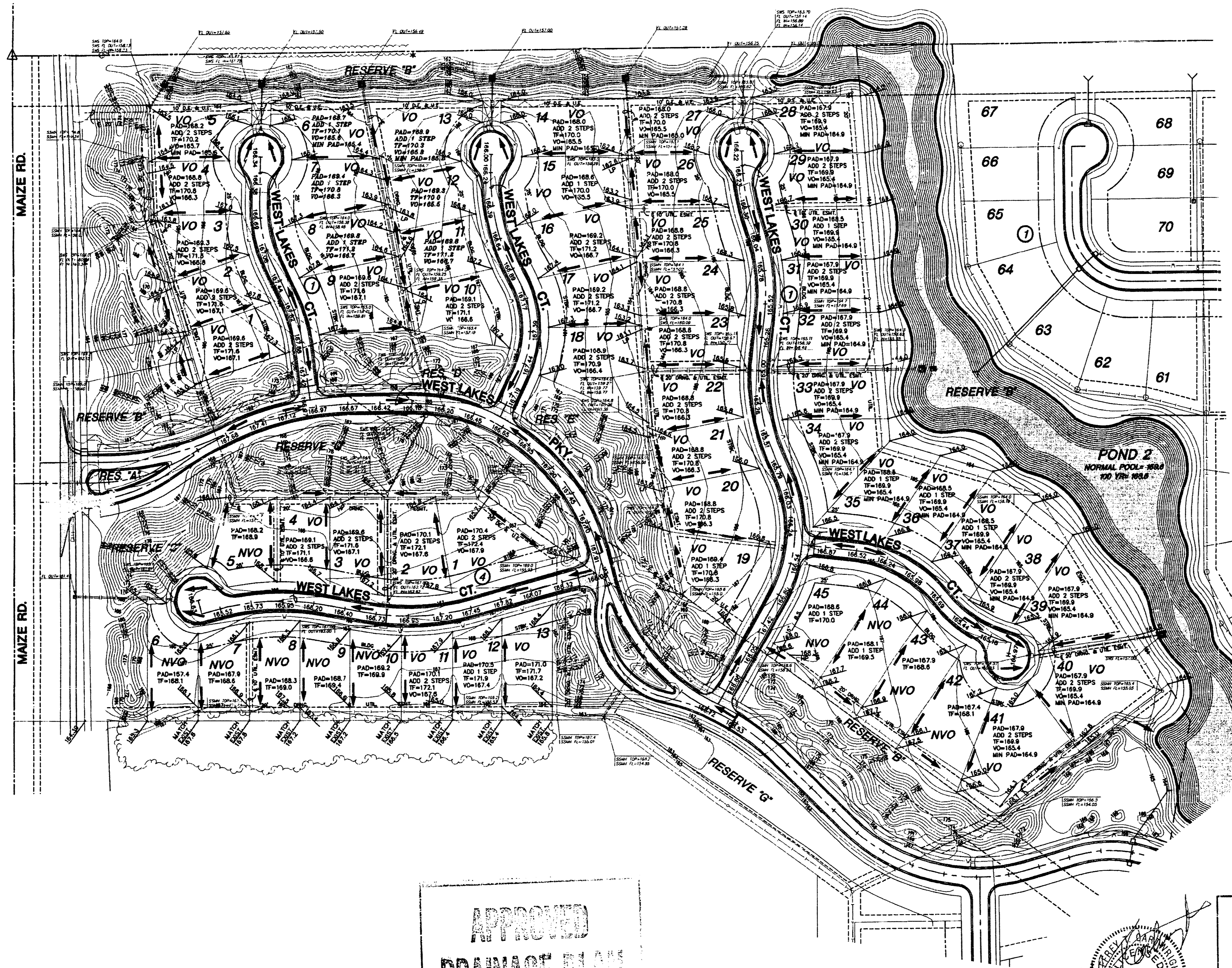


SCALE: 1" = 100'

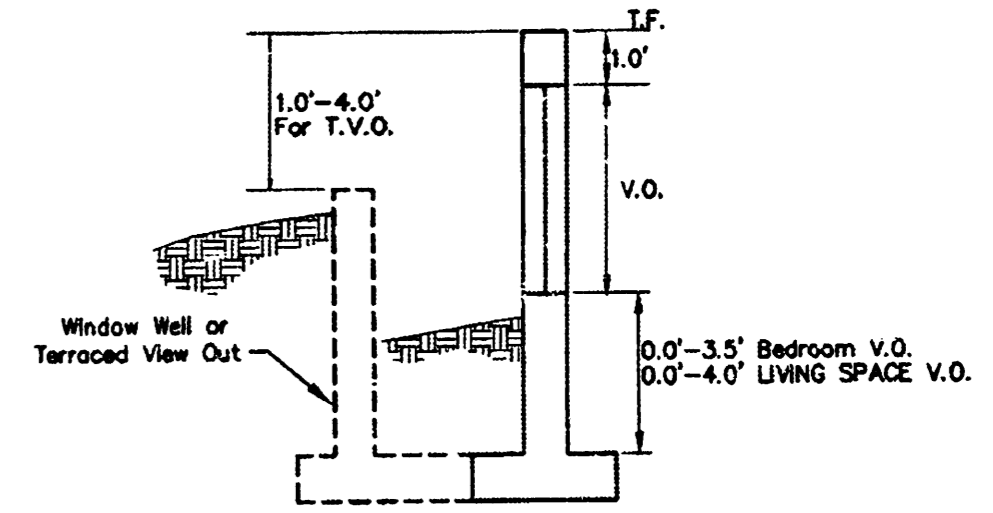


VICINITY MAP

MINIMUM PAD ELEVATIONS (LOWEST OPENINGS)			
LOT	BLOCK	ELEVATION (CITY DATUM)	HYDRAULIC GRADE LINE (GTY)
1	1	N/A	N/A
2	1	N/A	N/A
3	1	N/A	N/A
4	1	N/A	N/A
5	1	165.6	1352.0
6	1	165.4	1352.8
7	1	N/A	N/A
8	1	N/A	N/A
9	1	N/A	N/A
10	1	N/A	N/A
11	1	N/A	N/A
12	1	N/A	N/A
13	1	165.2	1352.6
14	1	165.0	1352.4
15	1	N/A	N/A
16	1	N/A	N/A
17	1	N/A	N/A
18	1	N/A	N/A
19	1	N/A	N/A
20	1	N/A	N/A
21	1	N/A	N/A
22	1	N/A	N/A
23	1	N/A	N/A
24	1	N/A	N/A
25	1	N/A	N/A
26	1	N/A	N/A
27	1	165.0	1352.4
28	1	164.9	1352.3
29	1	164.9	1352.3
30	1	164.9	1352.3
31	1	164.9	1352.3
32	1	164.9	1352.3
33	1	164.9	1352.3
34	1	164.9	1352.3
35	1	164.9	1352.3
36	1	164.9	1352.3
37	1	164.9	1352.3
38	1	164.9	1352.3
39	1	164.9	1352.3
40	1	164.9	1352.3
41	1	164.9	1352.3
42	1	N/A	N/A
43	1	N/A	N/A
44	1	N/A	N/A
2	4	N/A	N/A
3	4	N/A	N/A
4	4	N/A	N/A
5	4	N/A	N/A
6	4	N/A	N/A
7	4	N/A	N/A
8	4	N/A	N/A
9	4	N/A	N/A
10	4	N/A	N/A
11	4	N/A	N/A
12	4	N/A	N/A
13	4	N/A	N/A



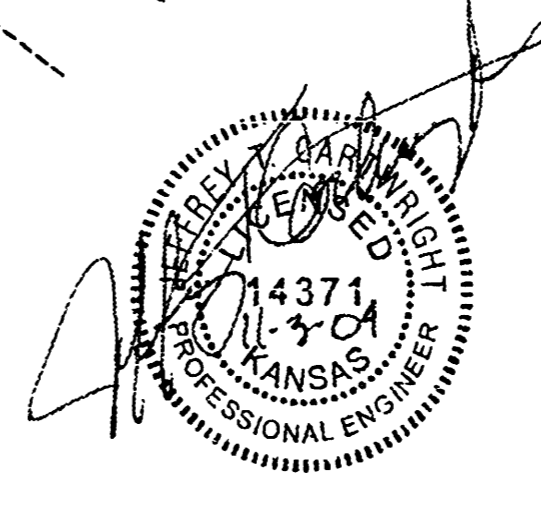
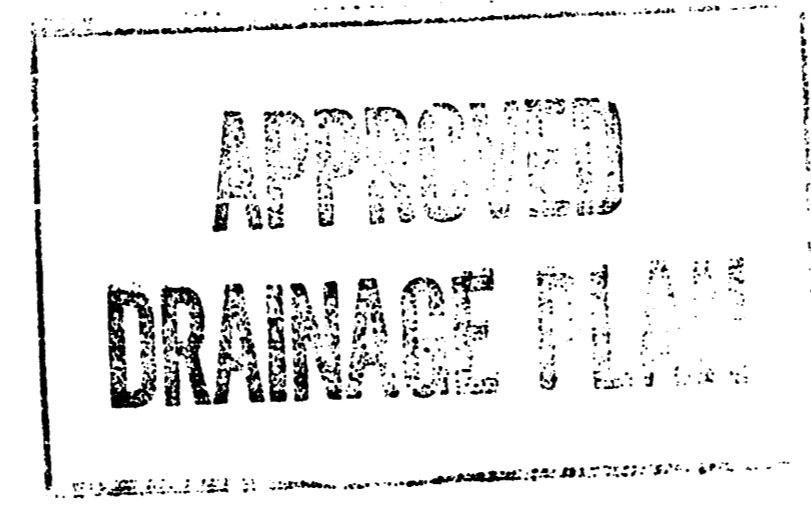
- LEGEND**
- CTH - CONIFEROUS TREE & DIAMETER
 - DTH - DECIDUOUS TREE & DIAMETER
 - SH - SIGN
 - B - BUSH
 - ET - EDGE OF TREES
 - F - FENCE
 - SMH - SANITARY SEWER MANHOLE
 - GM - GAS METER
 - HP - HIGH LINE POLE
 - G - GATE
 - W - WALL
 - LP - LIGHT POLE
 - FH - FIRE HYDRANT
 - WH - WATER VALVE
 - WM - WATER METER
 - PP - POWER POLE AND GUY ANCHOR
 - TR - TELEPHONE RISER
 - I - INLET
 - SS - STORM SEWER PIPE
 - W - WATER LINE
 - SS - SANITARY SEWER LINE
 - G - GAS LINE
 - T - TELEPHONE LINE
 - UE - UNDERGROUND ELECTRIC LINE
 - OE - OVERHEAD ELECTRIC
 - OF - OVERHEAD FIBER OPTIC CABLE
 - SC - SECTION CORNER
 - PC - PROPERTY CORNER FOUND
 - BM - BENCHMARK
 - W - WALK OUT
 - VO - VIEW OUT
 - PVO - PARTIAL VIEW OUT
 - NVO - NO VIEW OUT
 - WO - WALKOUT WHICH MAY REQUIRE THICKER FOOTING AND/OR ENGINEERED FILL UNDER FOOTINGS
 - PE - PROP. HOUSE ELEV.
 - EP - EXIST. PLOT PLAN HOUSE ELEV.



VIEW OUT & TERRACED VIEW OUT DETAIL

G:\CIVIL\98 18\DWG\GRAD\FH_2\99118_VO-WO_MAP.DWG

**PHASE 2 - LOT GRADING PLAN
FOX RIDGE ADDITION**



DATE: NOVEMBER 2004

FOX RIDGE ADDITION (MAIZE RD. SIDE)
PROJECT NAME

PHASE 2 - VIEW-OUT / WALK-OUT MAP
SHEET TITLE

MKEC ENGINEERING CONSULTANTS
411 N. WEBB ROAD
WICHITA, KS. 67208
316 - 684 - 9400

DESIGN BY: KLA DRAWN BY: SMD CHECKED BY: GJA

DATE: NOVEMBER 2004 JOB NO.: 99118_VO-WO_MAP SHEET OF: 1 / 1