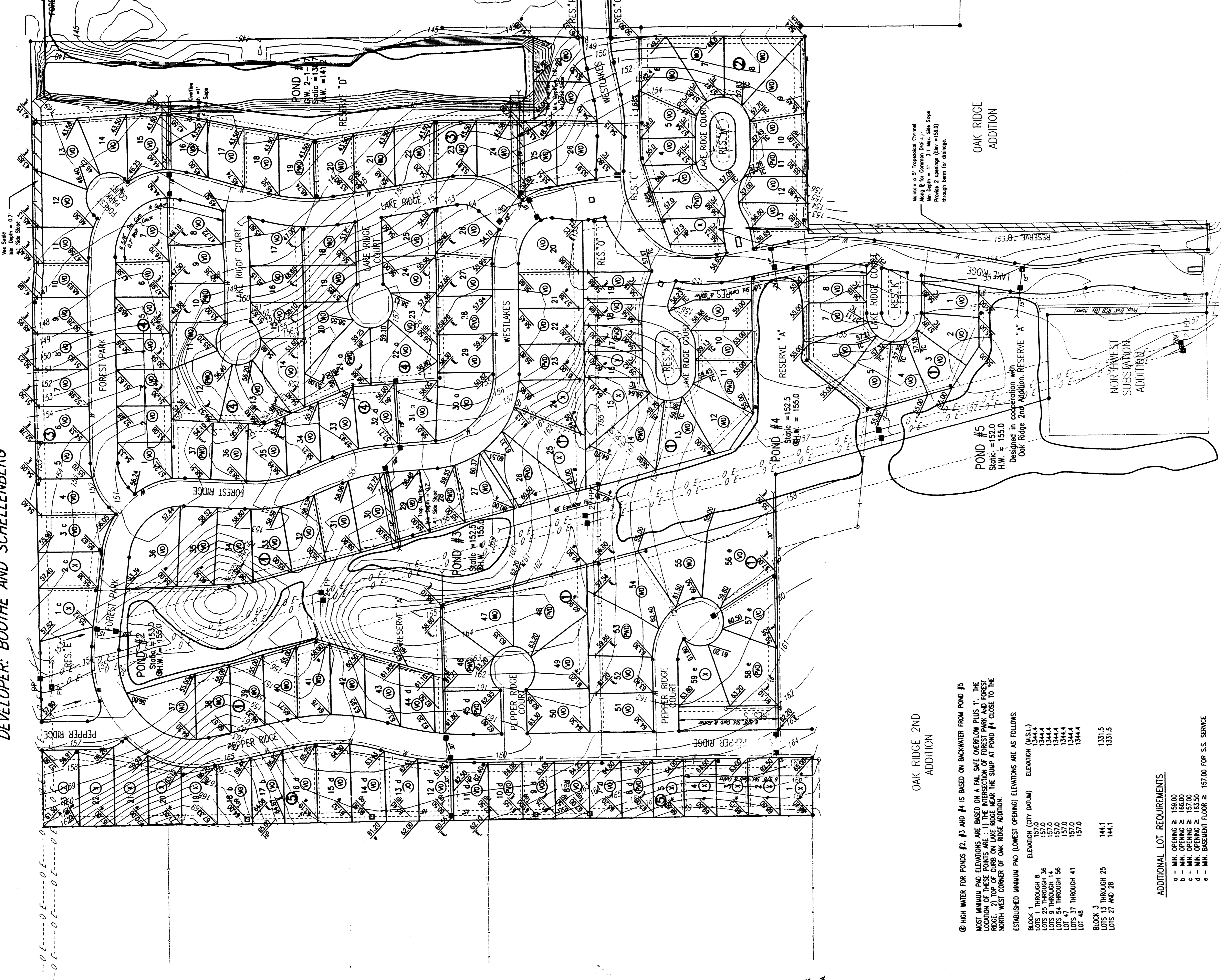
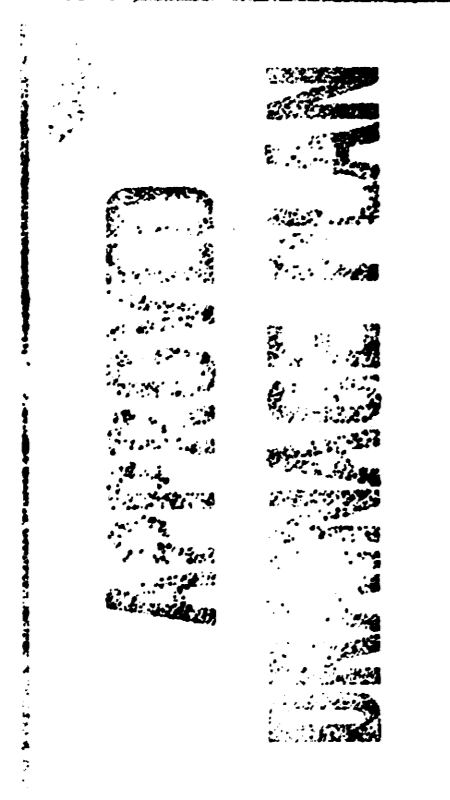
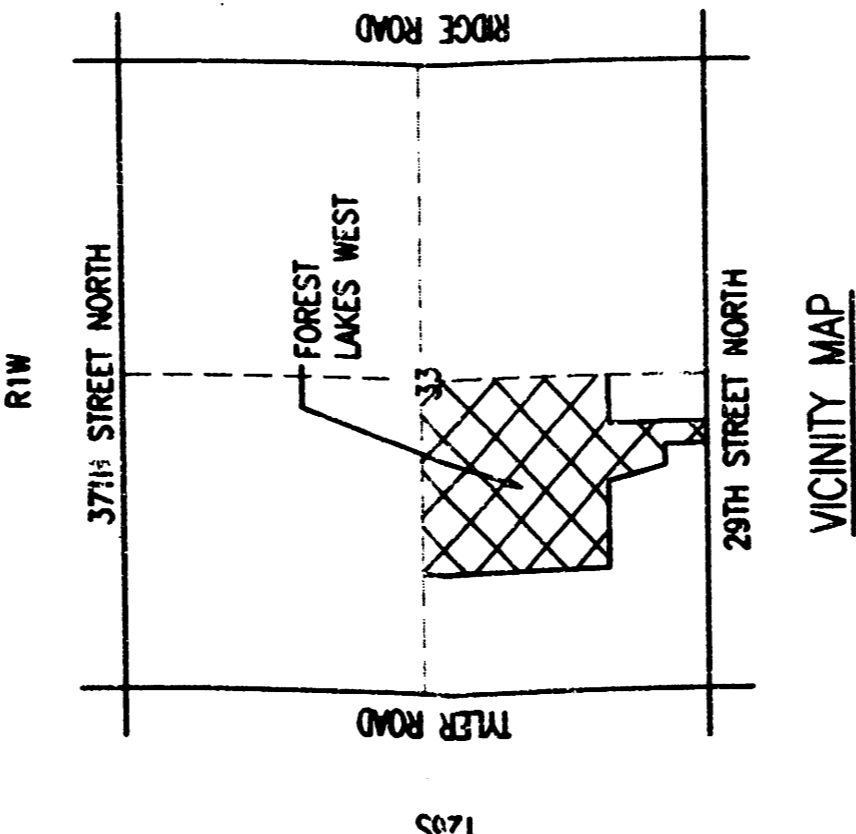


11/19/99 SAD/KER

FOUR CORNER LOT GRADING PLAN FOR
FOREST LAKES WEST
 AN ADDITION TO WICHITA, SEDGWICK COUNTY, KANSAS
 DEVELOPER: BOOTHE AND SCHELLENBERG



= IRON SET
 SCALE: 1"=100'
 2-14-97
 TOPOGRAPHY DATE: JANUARY, 1987
 B.M. - RAILROAD SINK IN POWER POLE, NORTHWEST SUBSTATION ADDITION.
 ELEV.=159.95 CITY DATUM
 ELEV.=157.36 M.S.L.



CITY DATUM USED FOR ALL ELEVATIONS.
 MEAN SEA LEVEL = CITY DATUM + 1197.4
 THIS PLAN ASSUMES 1.5" OF ROLL CURB & GUTTER.
 WALK GRADE AT 0.5' ABOVE TOP OF CURB UNLESS NOTED.
 SEE STREET DESIGN PLANS FOR MORE DETAILED & UPDATED STREET GRADES.
 SEE SANITARY SEWER PLANS FOR MORE DETAILED & UPDATED FLOWLINE DATA.

- LEGEND**
- STORM SEWER AND INLET
 - STORM SEWER AND MANHOLE
 - - - PRIVATE STORM SEWER AND INLET (BY OWNER)
 - PROPOSED SANITARY SEWER
 - - - PROPOSED WATERLINES
 - ⊙ VENTOUT BASEMENT
 - ⊙ WALKOUT BASEMENT
 - ⊙ POSSIBLE VENTOUT BASEMENT
 - ⊙ POSSIBLE WALKOUT BASEMENT
 - ⊙ FULL FOUNDATION
 - ⊙ 4 CORNER LOT ELEVATION (ADD 100 FOR CITY DATUM)
 - H.P. HIGH POINT
 - * MATCH EXISTING
 - ℓ FLOW LINE (DITCH)
 - TC TOP OF CURB

OAK RIDGE 2ND ADDITION
 OAK RIDGE ADDITION
 NORTHWEST SUBSTATION ADDITION
 POND #5
 Static = 152.0
 H.W. = 155.0
 Designed in cooperation with Oak Ridge 2nd Addition, RESERVE "A"

POND #4
 Static = 152.5
 H.W. = 155.0

POND #3
 Static = 152.5
 H.W. = 155.0

POND #2
 Static = 153.0
 H.W. = 156.0

HIGH WATER FOR PONDS #2, #3 AND #4 IS BASED ON BACKWATER FROM POND #5.
 MOST MINIMUM PAD ELEVATIONS ARE BASED ON A FULL SAFE OVERFLOW PLUS 1'. THE
 LOCATION OF THE CURB ON LAKE RIDGE NEAR THE SWAMP AT POND #4 CLOSE TO THE
 NORTH WEST CORNER OF OAK RIDGE ADDITION.

ESTABLISHED MINIMUM PAD (LOWEST OPENING) ELEVATIONS ARE AS FOLLOWS:
 BLOCK 1 THROUGH 8
 LOTS 25 THROUGH 56
 LOTS 9 THROUGH 14
 LOTS 54 THROUGH 56
 LOTS 37 THROUGH 41
 LOT 48
 BLOCK 3 THROUGH 25
 LOTS 27 AND 28

ELEVATION (CITY DATUM)	ELEVATION (M.S.L.)
157.0	1344.4
157.0	1344.4
157.0	1344.4
157.0	1344.4
157.0	1344.4
157.0	1344.4
144.1	1331.5
144.1	1331.5

ADDITIONAL LOT REQUIREMENTS

- ⊙ - MIN. OPENING ≥ 159.00
- ⊙ - MIN. OPENING ≥ 156.00
- ⊙ - MIN. OPENING ≥ 157.00
- ⊙ - MIN. OPENING ≥ 163.50
- ⊙ - MIN. BASEMENT FLOOR ≥ 157.00 FOR S.S. SERVICE

© 29TH STREET NORTH = SECTION LINE