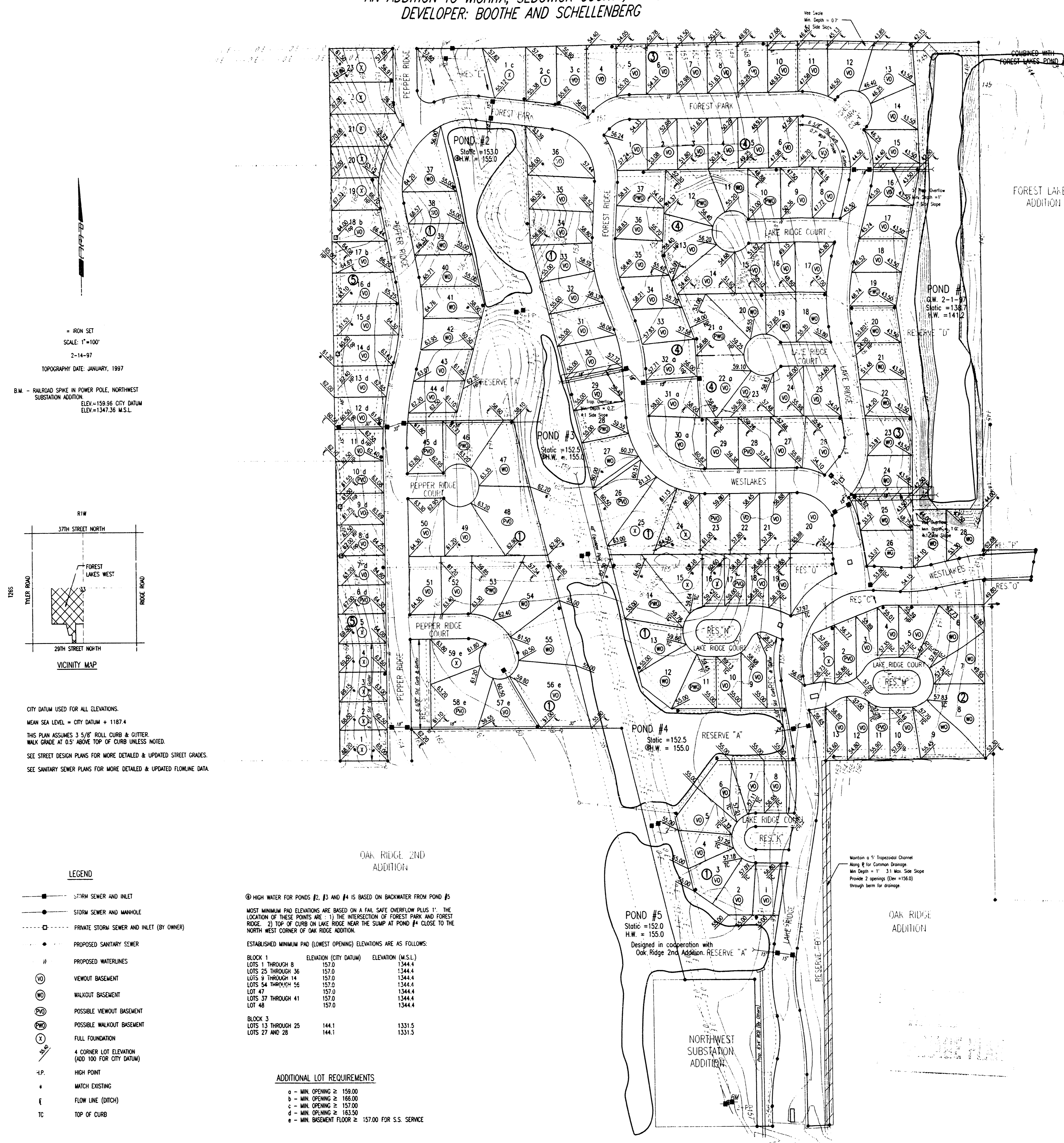
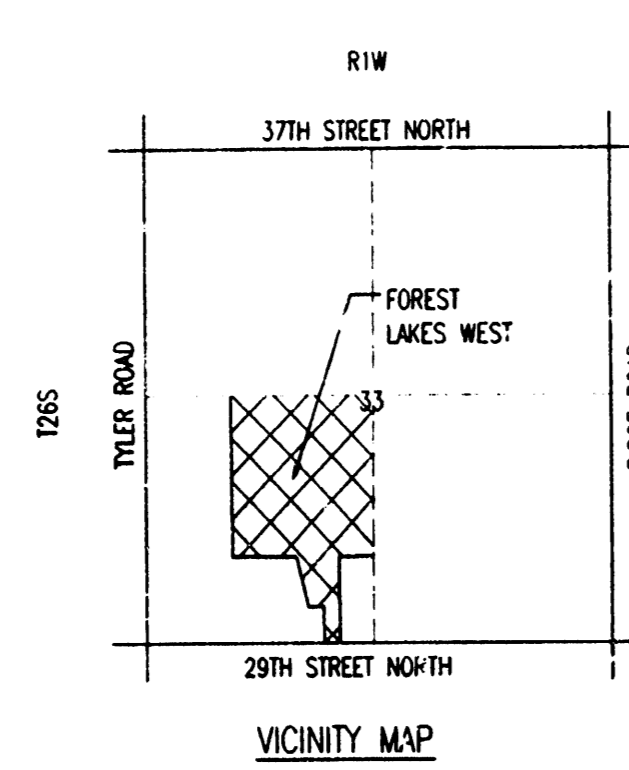


FOUR CORNER LOT GRADING PLAN FOR
FOREST LAKES WEST
 AN ADDITION TO WICHITA, SEDGWICK COUNTY, KANSAS
 DEVELOPER: BOOTHE AND SCHELLENBERG



IRON SET
 SCALE: 1"=100'
 2-14-97
 TOPOGRAPHY DATE: JANUARY, 1997

B.M. -- RAILROAD SPIKE IN POWER POLE, NORTHWEST SUBSTATION ADDITION
 ELEV.=159.96 CITY DATUM
 ELEV.=1347.36 M.S.L.



CITY DATUM USED FOR ALL ELEVATIONS.
 MEAN SEA LEVEL = CITY DATUM + 1187.4
 THIS PLAN ASSUMES 3 5/8" ROLL CURB & GUTTER.
 WALK GRADE AT 0.5' ABOVE TOP OF CURB UNLESS NOTED.
 SEE STREET DESIGN PLANS FOR MORE DETAILED & UPDATED STREET GRADES.
 SEE SANITARY SEWER PLANS FOR MORE DETAILED & UPDATED FLOWLINE DATA.

- LEGEND**
- S+M— STORM SEWER AND INLET
 - S+M— STORM SEWER AND MANHOLE
 - S+M— PRIVATE STORM SEWER AND INLET (BY OWNER)
 - S+M— PROPOSED SANITARY SEWER
 - PROPOSED WATERLINES
 - ⊖ VIEWOUT BASEMENT
 - ⊙ WALKOUT BASEMENT
 - ⊕ POSSIBLE VIEWOUT BASEMENT
 - ⊕ POSSIBLE WALKOUT BASEMENT
 - ⊕ FULL FOUNDATION
 - ⊕ 4 CORNER LOT ELEVATION (ADD 100 FOR CITY DATUM)
 - HP HIGH POINT
 - ME MATCH EXISTING
 - FL FLOW LINE (DITCH)
 - TC TOP OF CURB

⊕ HIGH WATER FOR PONDS #2, #3 AND #4 IS BASED ON BACKWATER FROM POND #5

MOST MINIMUM PAD ELEVATIONS ARE BASED ON A FAL SAFE OVERFLOW PLUS 1'. THE LOCATION OF THESE POINTS ARE: 1) THE INTERSECTION OF FOREST PARK AND FOREST RIDGE. 2) TOP OF CURB ON LAKE RIDGE NEAR THE SWAMP AT POND #4 CLOSE TO THE NORTH WEST CORNER OF OAK RIDGE ADDITION.

ESTABLISHED MINIMUM PAD (LOWEST OPENING) ELEVATIONS ARE AS FOLLOWS:

BLOCK	LOT	ELEVATION (CITY DATUM)	ELEVATION (M.S.L.)
BLOCK 1	LOTS 1 THROUGH 8	157.0	1344.4
	LOTS 25 THROUGH 36	157.0	1344.4
	LOTS 9 THROUGH 14	157.0	1344.4
	LOTS 54 THROUGH 56	157.0	1344.4
	LOT 47	157.0	1344.4
BLOCK 3	LOTS 37 THROUGH 41	157.0	1344.4
	LOT 48	157.0	1344.4
	LOTS 13 THROUGH 25	144.1	1331.5
	LOTS 27 AND 28	144.1	1331.5

ADDITIONAL LOT REQUIREMENTS

- o - MIN. OPENING ≥ 159.00
- b - MIN. OPENING ≥ 166.00
- c - MIN. OPENING ≥ 157.00
- d - MIN. OPENING ≥ 163.50
- e - MIN. BASEMENT FLOOR ≥ 157.00 FOR S.S. SERVICE

© 29TH STREET NORTH = SECTION LINE

Forest Lakes West ADDN

9/2/97 PDM
 8/26/97 PDM
 Revised
 R. ICHM D.M. 170