

NOTE
The back of all lots will drain to the existing lake.

Scale 1" = 100'

NOTE
The minimum low opening elevation for homes built in this addition shall be 134.0 (City of Wichita Datum) 1321.4 (MSL)
The minimum basement floor elevation for homes built in this addition shall be 131.0 (City of Wichita Datum) 1318.4 (MSL)

BENCHMARKS
1. "□" cut on southwest corner of north headwall at Meridian Avenue and Miro
Elev. 139.85 (City of Wichita Datum)

Normal pond water level 127.6

**APPROVED
DRAINAGE PLAN**

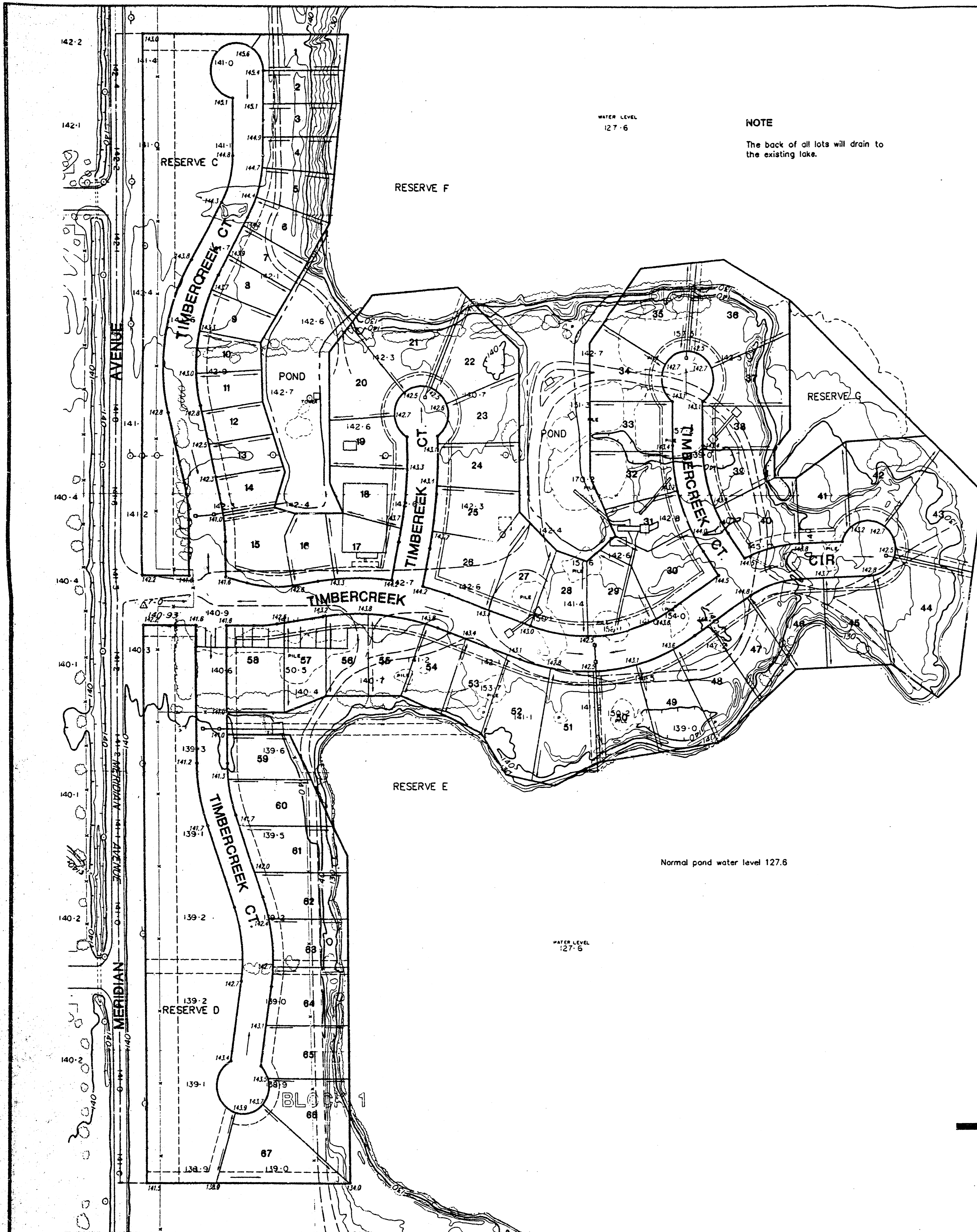
**LOT GRADING PLAN
HARBOR ISLE ADDITION**

TO WICHITA - SEDGWICK COUNTY, KANSAS

*HARBOR ISLE
GRADING PLAN*

July 26, 1994

P:\SUDCAP\512\ALD\740 F11 Jul 29 10 29 00 1994 B111 For Plan & Assoc.



NOTE
The back of all lots will drain to the existing lake.

Scale 1" = 100'

NOTE
The minimum low opening elevation for homes built in this addition shall be 134.0 (City of Wichita Datum) 1321.4 (MSL)
The minimum basement floor elevation for homes built in this addition shall be 131.0 (City of Wichita Datum) 1318.4 (MSL)

BENCHMARKS
1. "□" cut on southwest corner of north headwall at Meridian Avenue and Milro.
Elev. 139.85 (City of Wichita Datum)

Normal pond water level 127.6

LOT GRADING PLAN

HARBOR ISLE ADDITION

TO WICHITA - SEDGWICK COUNTY, KANSAS

July 26, 1994

K. WAPPS/DCA/PA/STAN/LOI-060 FPI Jul 25 10:29:00 1994 Bill For Poe & Assoc.