

BENCHMARK:

City of Wichita Benchmark
 SE Corner Intersection
 40' East and 46' South of
 Center Line Both, 58.82'
 SE of Section Corner Iron.
 21.7' West of Face Walk
 N/S. 13.6' North of Walk E/W
 Elevation = 156.93

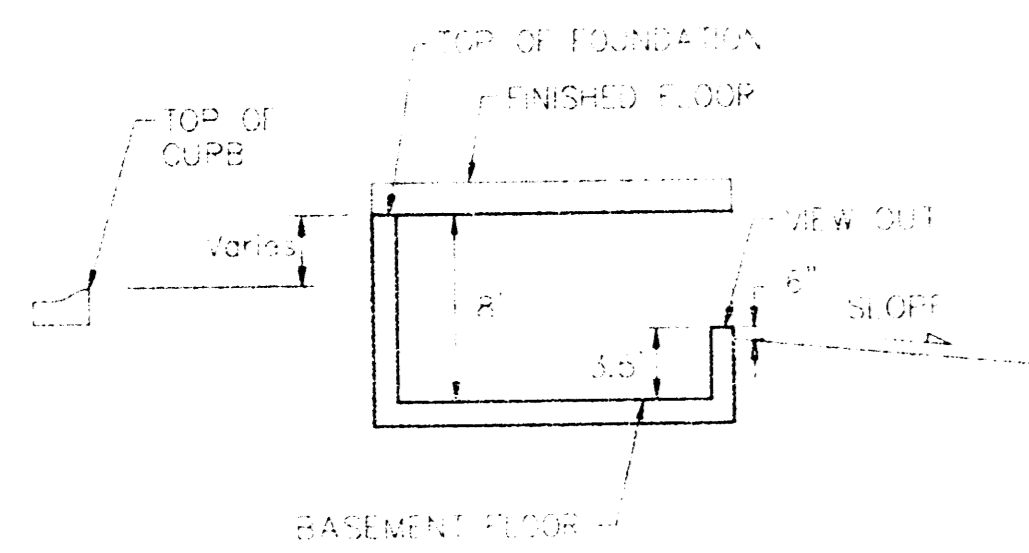
SCALE: 1" = 60'
 • = Iron

NOTES:

Proposed Top of Foundation Elevations
 Are Shown On Plans. Contractor to
 Set Finished Floor Elevations.

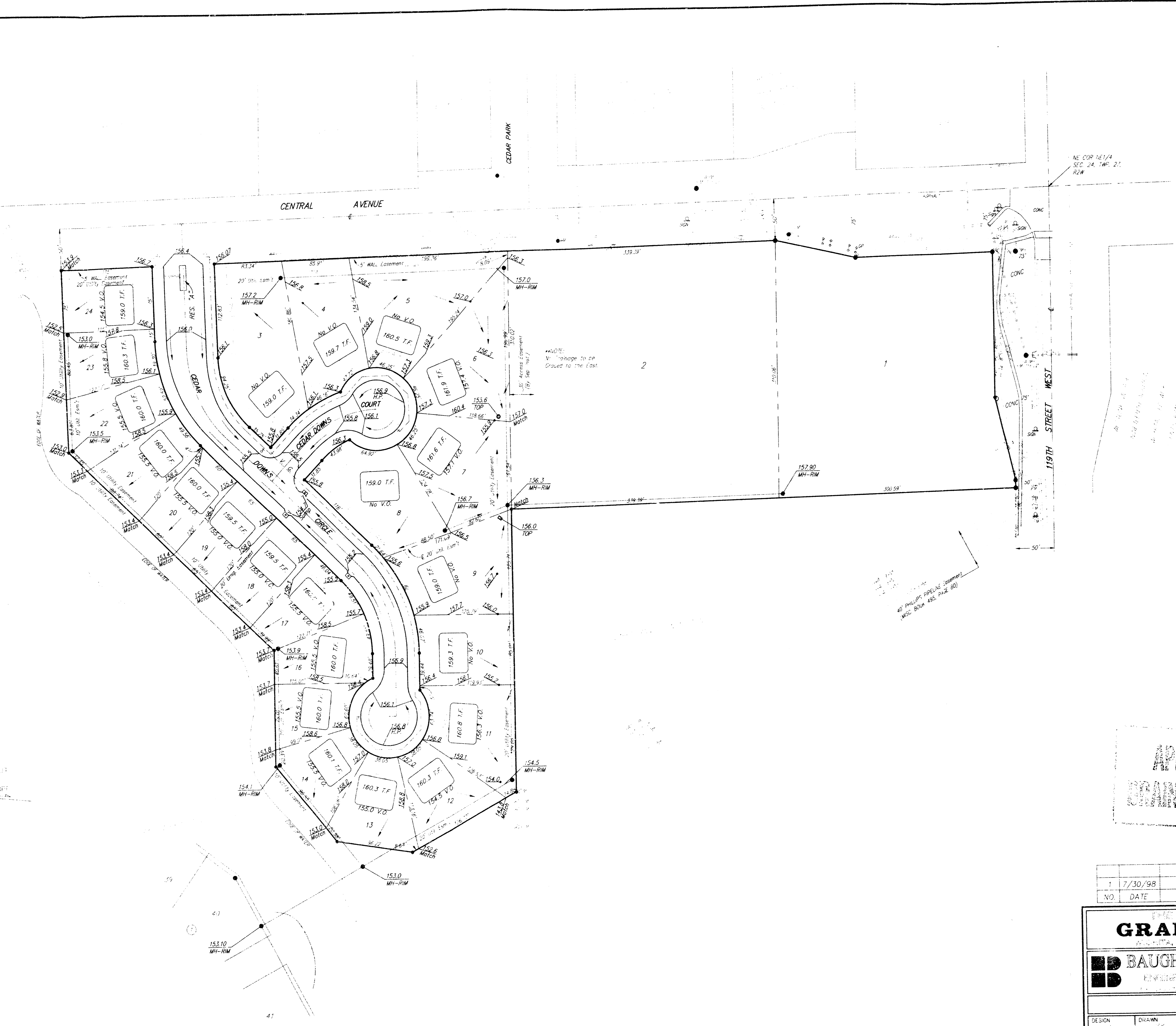
All Street Elevations Shown on Plans
 Are for Top of Curb (Full-Height).

This Grading Plan is Designed with
 View-Out Basements. Elevations
 Shown at Rear of House (XX.X V.O.)
 Are for Minimum Opening.



TYPICAL VIEW OUT
 NO SCALE

MINIMUM BENCHING AND ELEVATION FOR LOWEST GRADING TO THE STREET CURB	
GT	ELEVATION
11	152.6
24	152.6
11	152.6



APPROVED
 GRADING PLAN

REVISION RECORD				
NO.	DATE	DESCRIPTION	DR.	BY
1	7/30/98	Revised Grades	JAK	NBW

PREPARED AND SUBMITTED BY
GRADING PLAN
 WICHITA, KANSAS
BAUGHMAN COMPANY P. A.
 ENGINEERING, SURVEYING, & PLANNING
 1101 S. W. 10TH AVENUE, SUITE 100, WICHITA, KANSAS 67211

DESIGN	DRAWN	APPROVED	DATE	SCALE	SHEET
				1" = 60'	1 OF 1