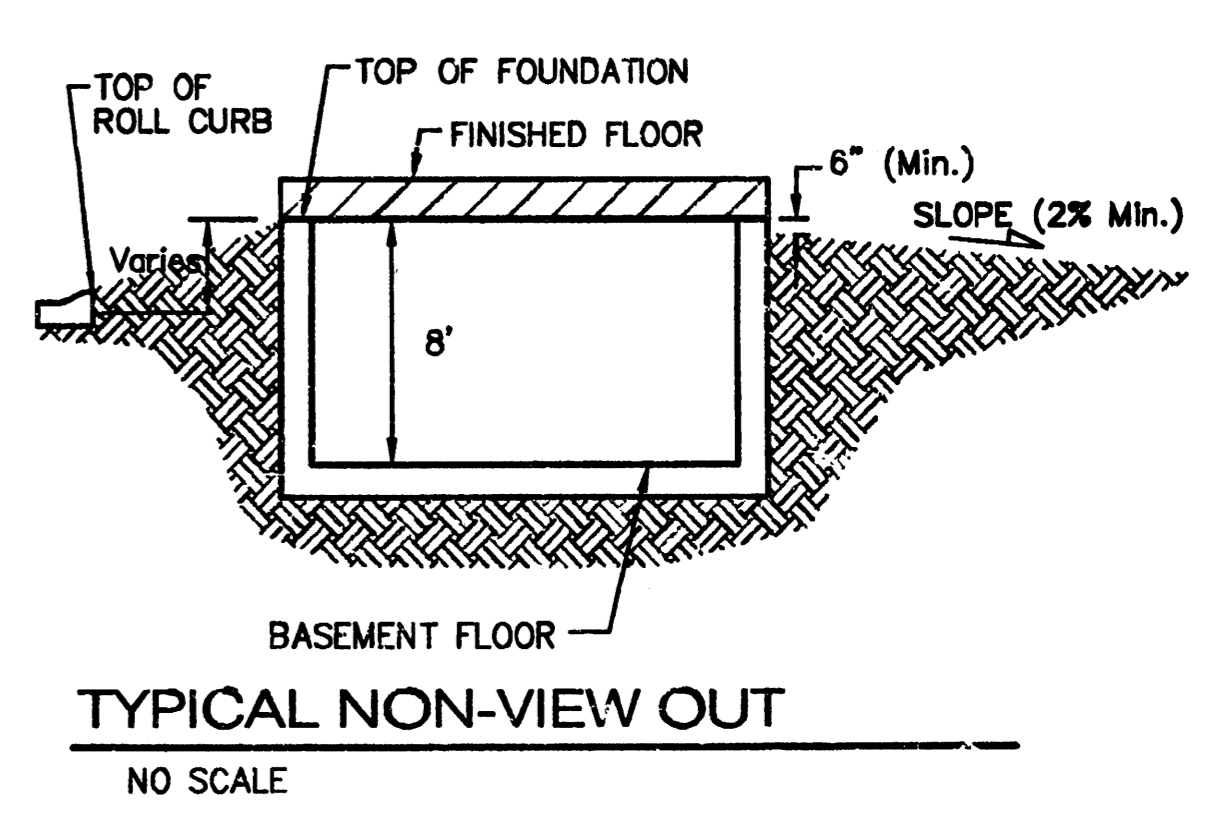
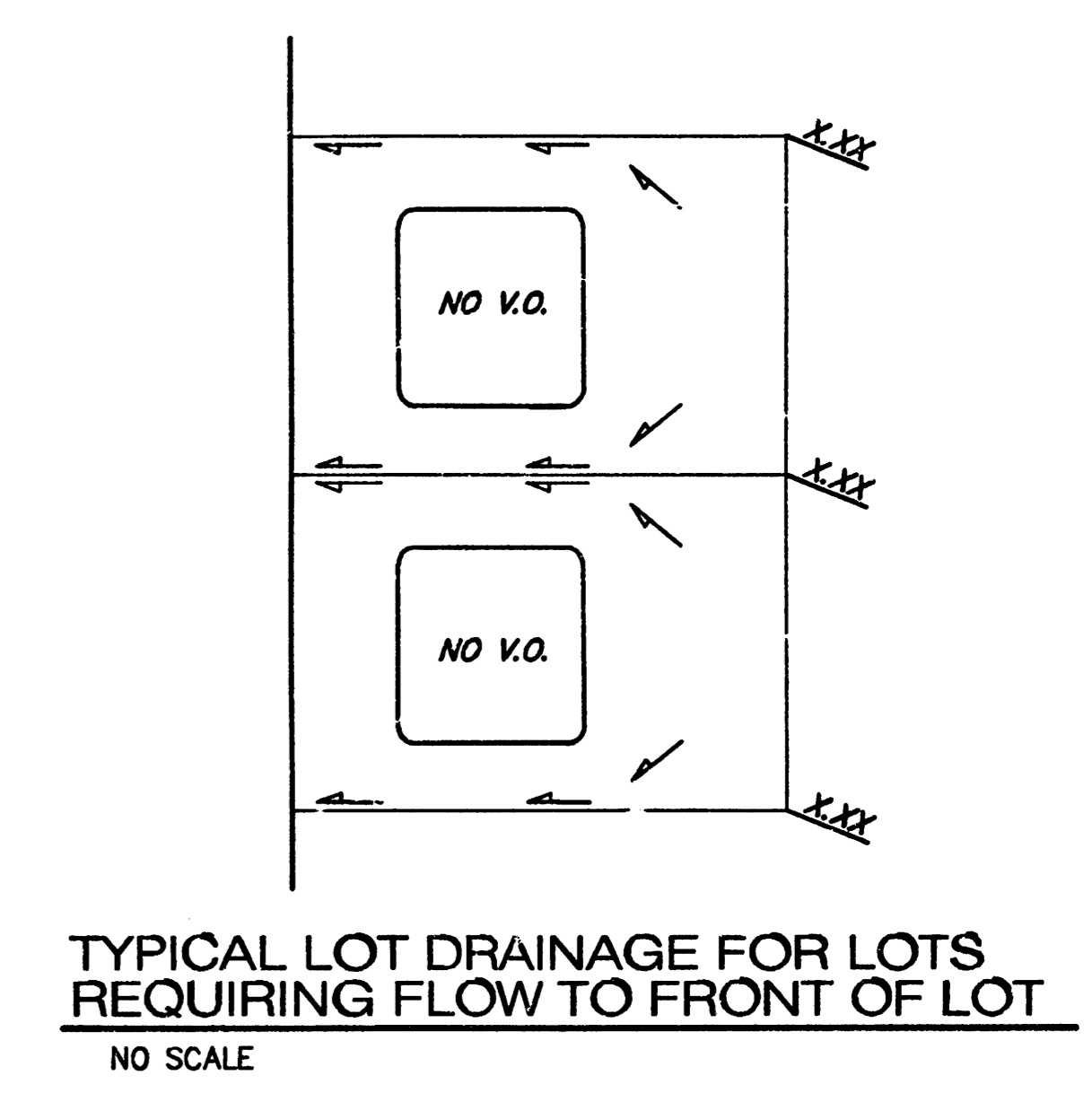
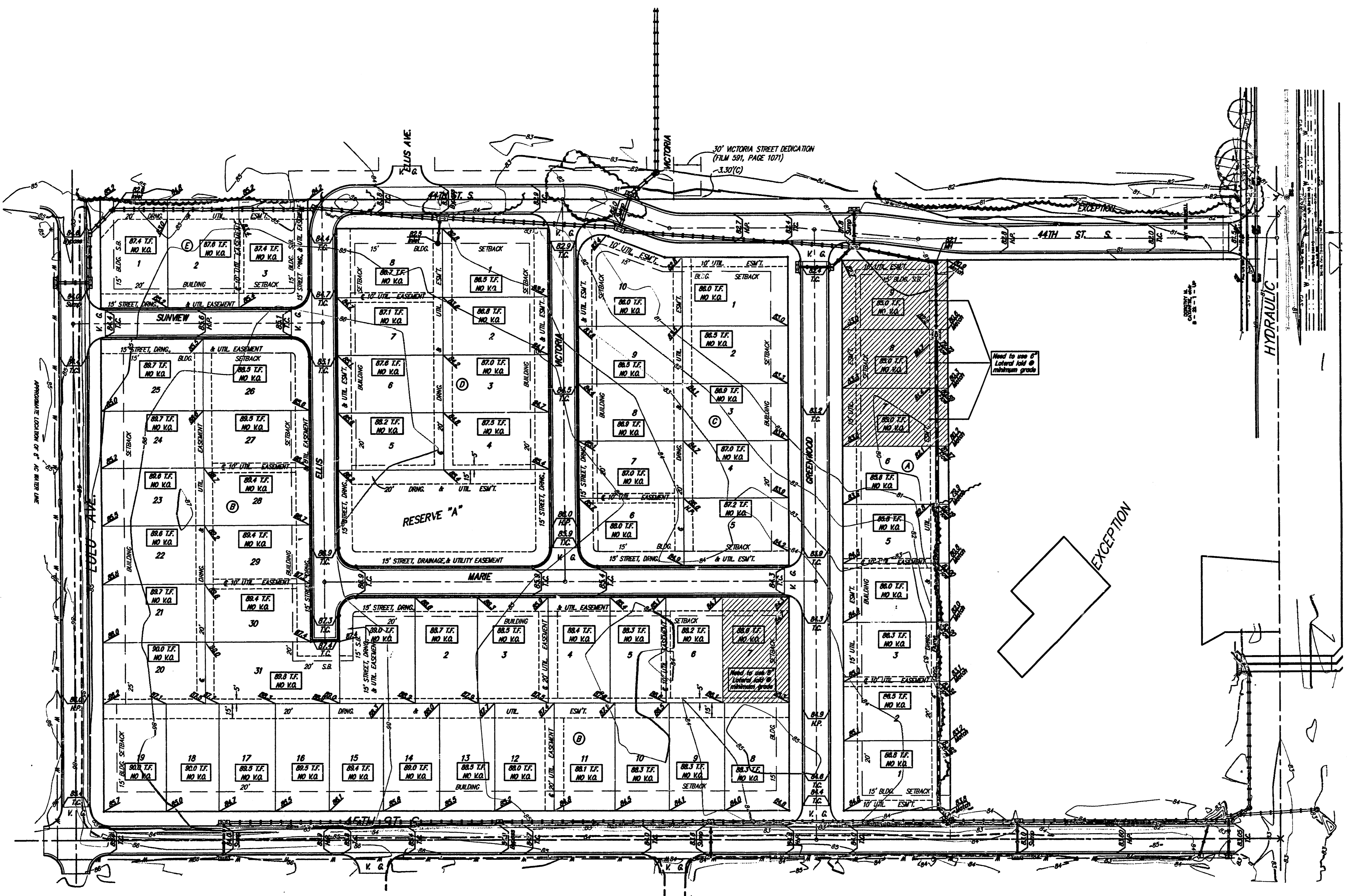


BENCHMARKS:
 1" Top of curb, north return, Northwest corner of 43rd and Hydraulic.
 Elev. = 82.33
 Small Railroad Spike in West face of Power Pole, East of 44th and Hydraulic.
 Elev. = 82.84
 Railroad Spike in Light Pole, Southwest corner of 43rd and Victoria.
 Elev. = 84.74

SCALE: 1" = 60'
 • = IRON



NOTES:
 Notes:
 Proposed Top of Foundation Elevations Are Shown On Plans.
 Contractor to Set Finished Floor Elevations.
 All Street Elevations Shown on Plans Are for Top of Curb.
 This Grading Plan is Designed with Non-View Outs.
 Lot dimensions have been omitted on this plan, refer to the recorded plat for this information.

**APPROVED
 DRAINAGE PLAN**

Updated: 09-30-2004

Baughman Hidden Glen Addition
 Grading Plan
 Wichita, Kansas

Baughman Company, P.A. 915 Elm St. Wichita, KS 67211 P:3162607721 F:3162602049
 ENGINEERING | SURVEYING | PLANNING | LANDSCAPE ARCHITECTURE

PROJECT NUMBER	DESIGN	DRAWN
	M/WS	M/WS
REVISIONS	APPROVED	DATE
		09/29/04
	SCALE	
	Noted	
	SHEET	1 OF 1

F:\Grade\HiddenGlen\gradecover.dwg