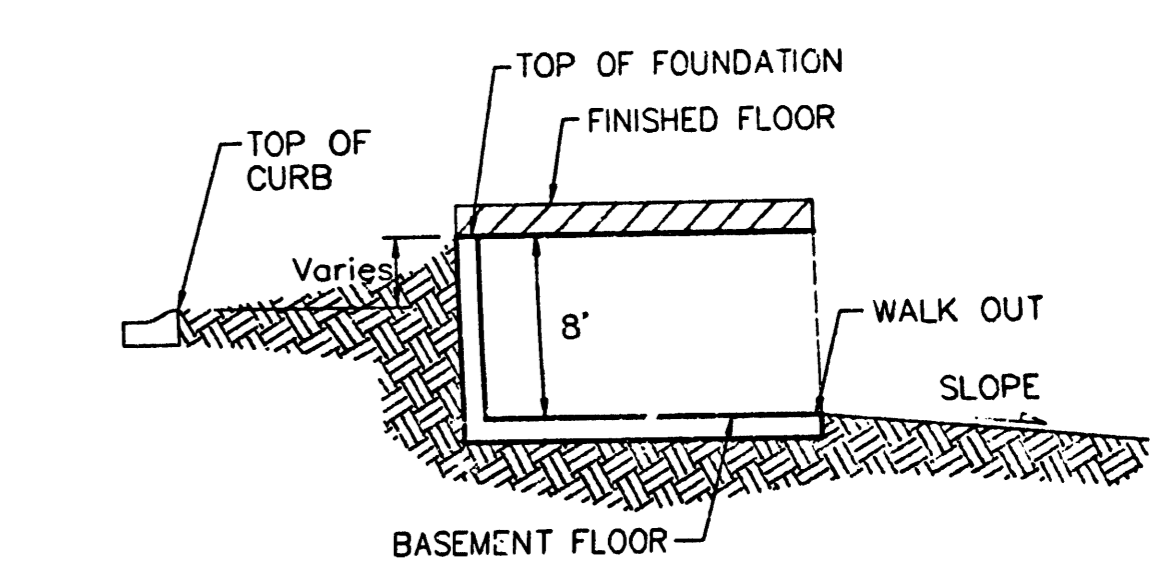
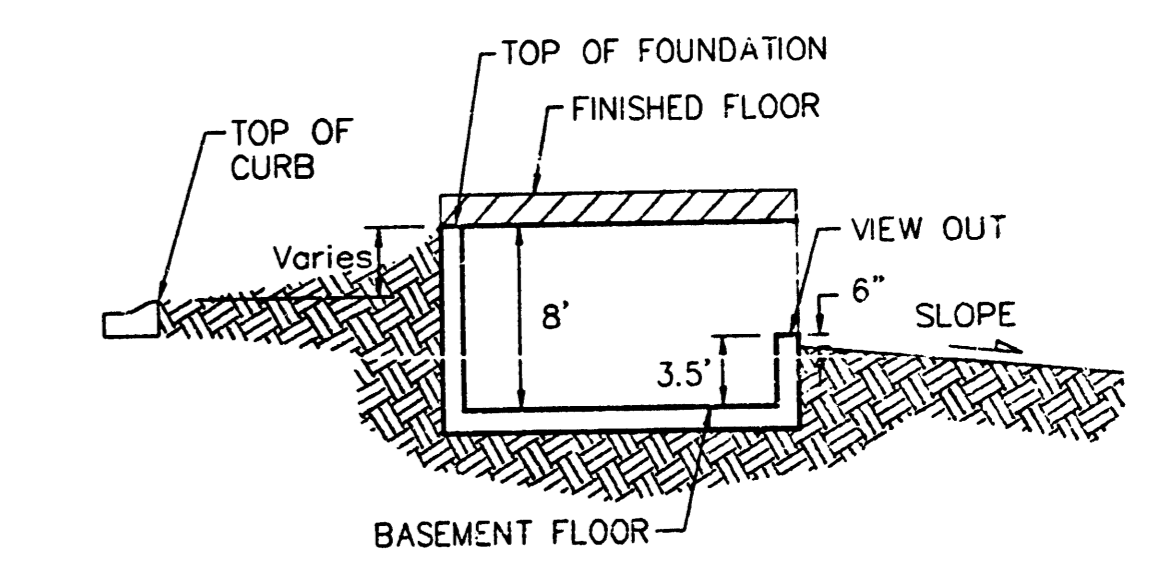


SCALE: 1" = 60'
• = Iron



NOTES:

Proposed Top of Foundation Elevations Are Shown On Plans. Contractor to Set Finished Floor Elevations.

All Street Elevations Shown on Plans Are for Top of Curb (Full-Height).

This Grading Plan is Designed with View-Out & Walk Basements. Elevations Shown at Rear of House (XX.X V.O. or XX.X W.O.) Are for Minimum Opening.

BENCHMARK:
135TH ST. W & CENTRAL
CITY OF WICHITA BENCHMARK DISC - NE COR. INTERSECTION
32.6' N. & 24.5' E. OF C. BOTH, 39.5' NE OF IRON AT SEC. COR.
ELEV = 158.30 CITY DATUM
(1546.90 M.S.L.)

BLOCK	LOTS	ELEVATION (CITY DATUM)	ELEVATION (M.S.L.)
B	1,2,3,4	165.0	1352.4
C	2,3,4,12,13,14,15,23, 26,27,28,29,30,31	165.0	1352.4
F	6,7,8	162.0	1319.4

HIGHLAND SPRINGS 2ND ADDITION
GRADING PLAN
WICHITA, KANSAS

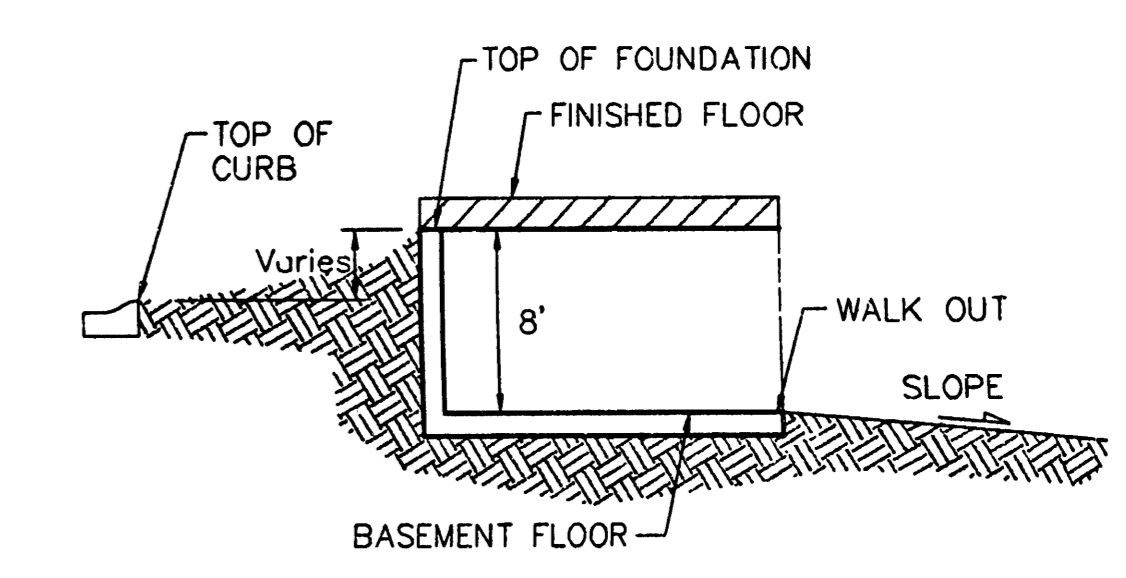
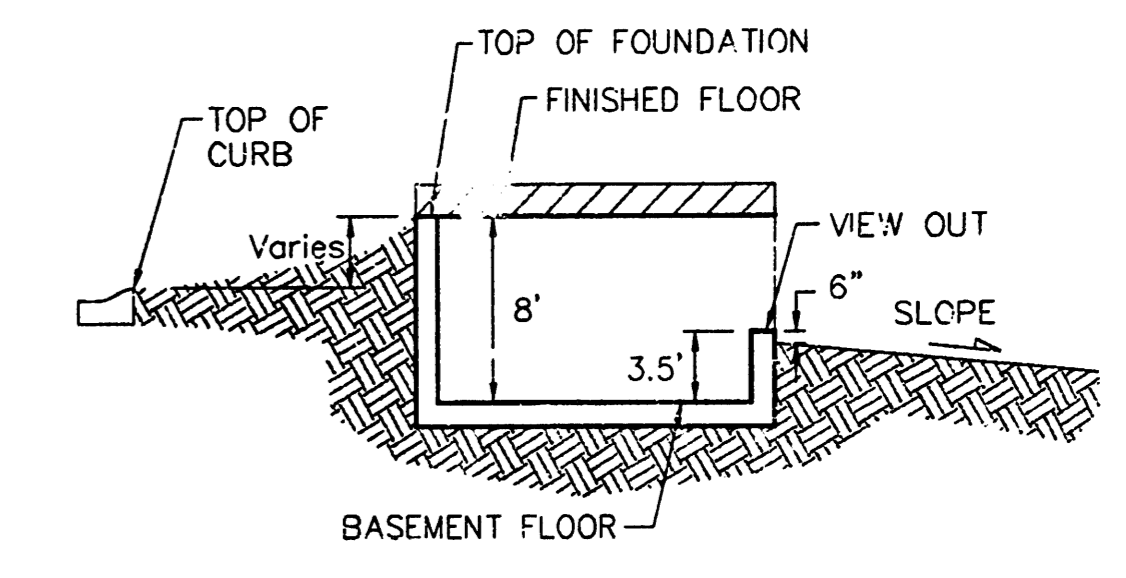
BAUGHMAN COMPANY P.A.
ENGINEERING, SURVEYING, & PLANNING
316-222-2222 • 315 ELLIS • WICHITA, KANSAS 67211

PROJECT NUMBER: _____ SHEET: **1** OF **3**

DESIGN: BLP DRAWN: JAK APPROVED: _____ DATE: Jan, 2000 SCALE: 1" = 60'

22nd Grid Dimension 142.0 Feet

SCALE: 1" = 60'
 • = Iron



NOTES:

Proposed Top of Foundation Elevations Are Shown On Plans. Contractor to Set Finished Floor Elevations.

All Street Elevations Shown on Plans Are for Top of Curb (Full-Height).

This Grading Plan is Designed with View-Out & Walk Basements. Elevations Shown at Rear of House (XX.X V.O. or XX.X W.O.) Are for Minimum Opening.

BENCHMARK:
 135TH ST. W. & CENTRAL
 CITY OF WICHITA BENCHMARK DISC - NE COR. INTERSECTION,
 32.6' N. & 24.5' E. OF C BOTH, 39.5' NE OF IRON AT SEC. COR.
 ELEV = 159.50 CITY DATUM
 (1346.90 M.S.L.)

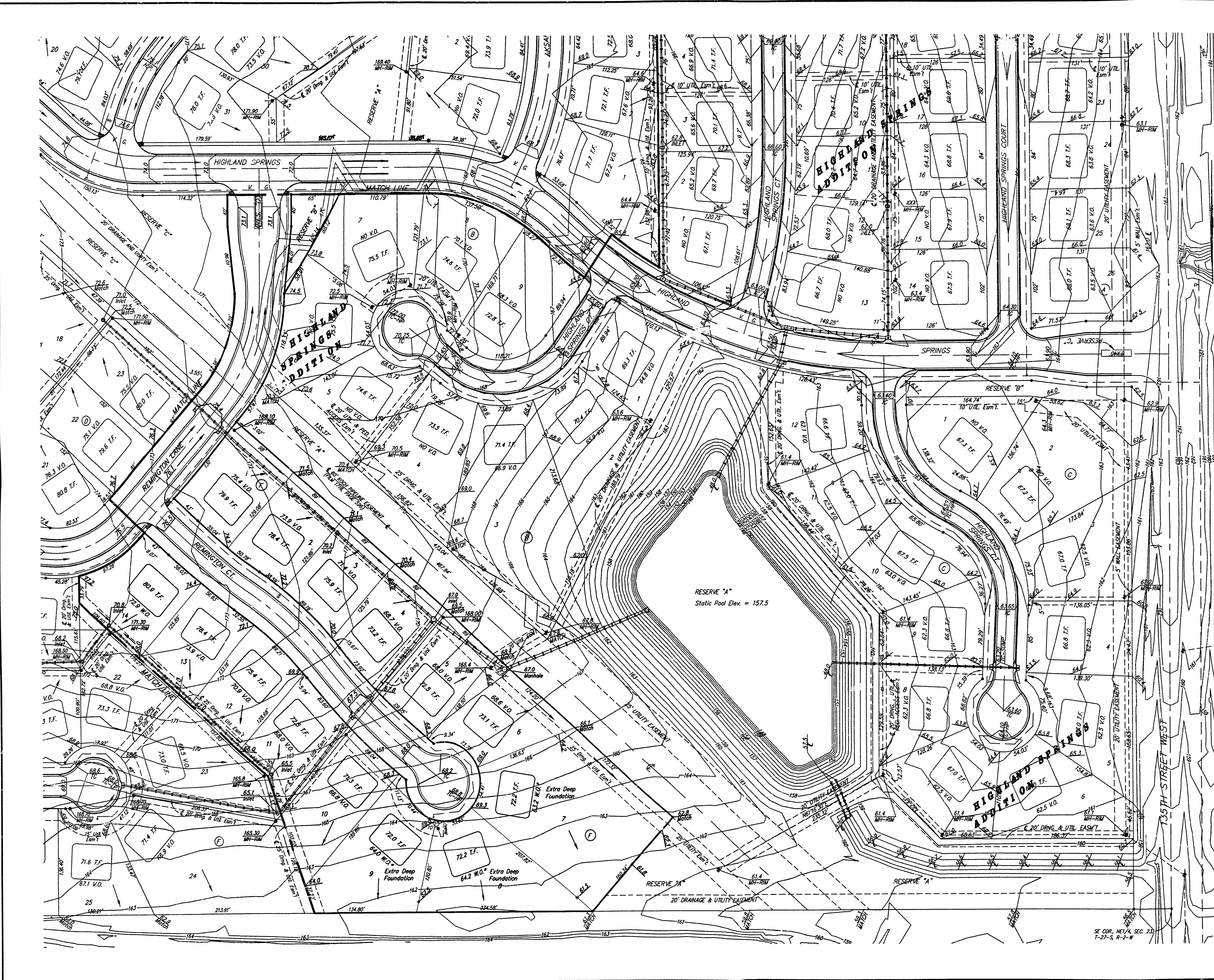
MINIMUM BUILDING PAD ELEVATION FOR LOWEST OPENING TO STRUCTURES			
BLOCK	LOT(S)	ELEVATION (CITY DATUM)	ELEVATION (NGVD)
B	1,2,3,4	165.0	1352.4
C	2,3,4,12,13,14,15,25, 26,27,28,29,30,31	165.0	1352.4
F	6,7,8	162.0	1349.4

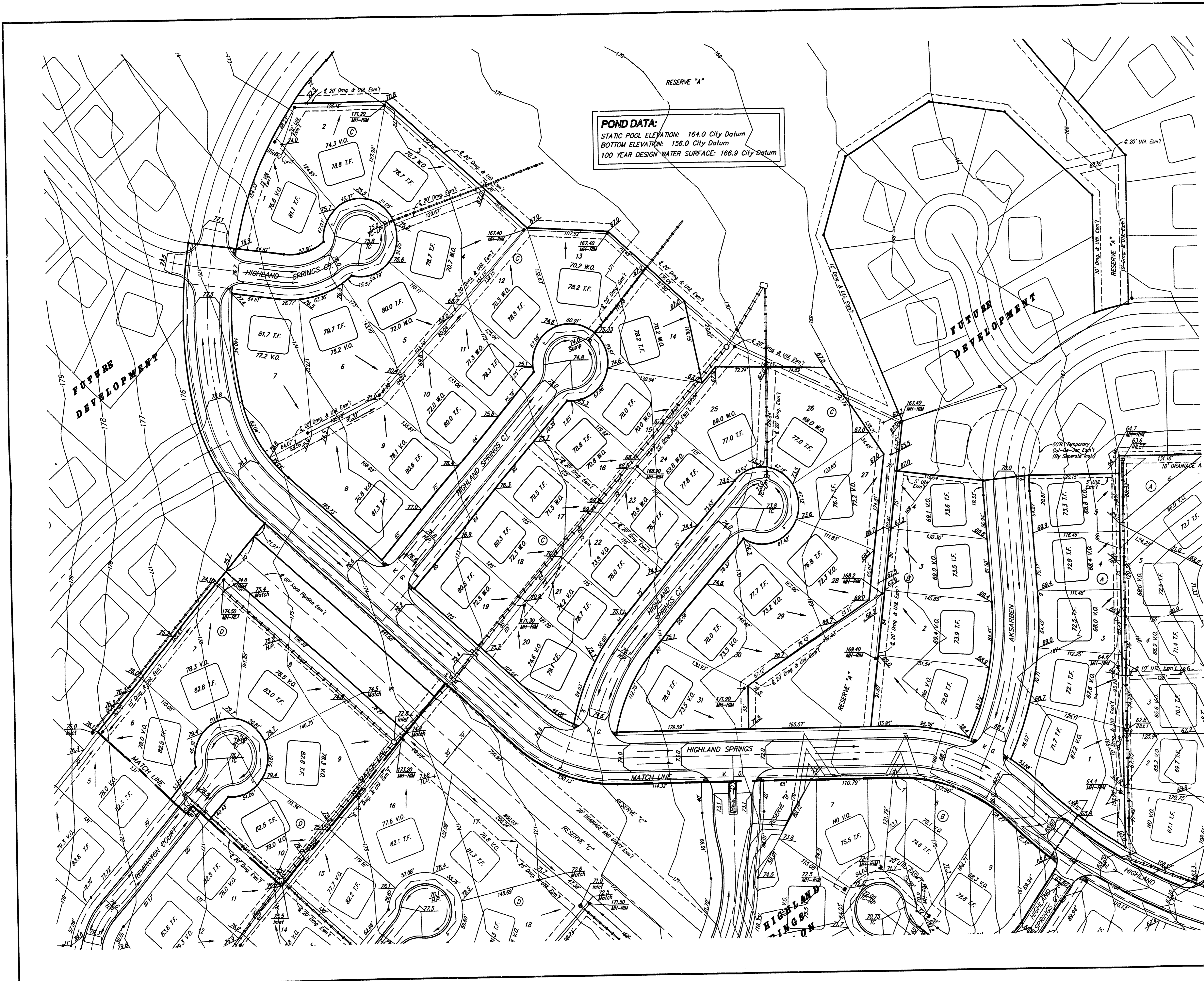
HIGHLAND SPRINGS 2ND ADDITION GRADING PLAN
 WICHITA, KANSAS

BAUGHMAN COMPANY P.A.
 ENGINEERING, SURVEYING, & PLANNING
 316-262-7271 • 315 ELLIS • WICHITA, KANSAS 67211

PROJECT NUMBER: _____ SHEET: **2** OF **3**

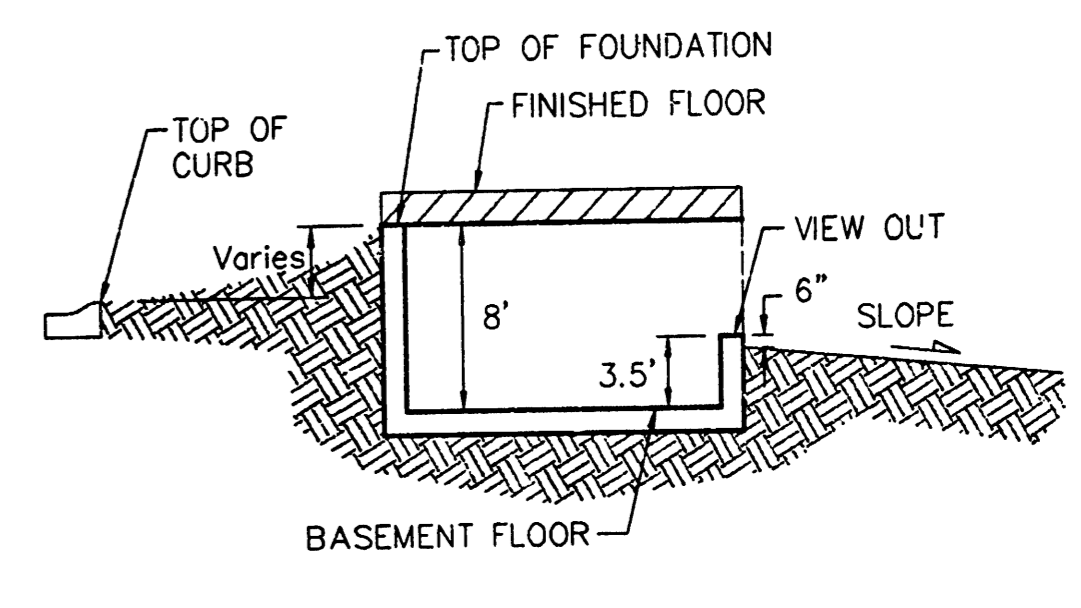
DESIGN: BLP DRAWN: JAK APPROVED: _____ DATE: Jan, 2000 SCALE: 1" = 60'



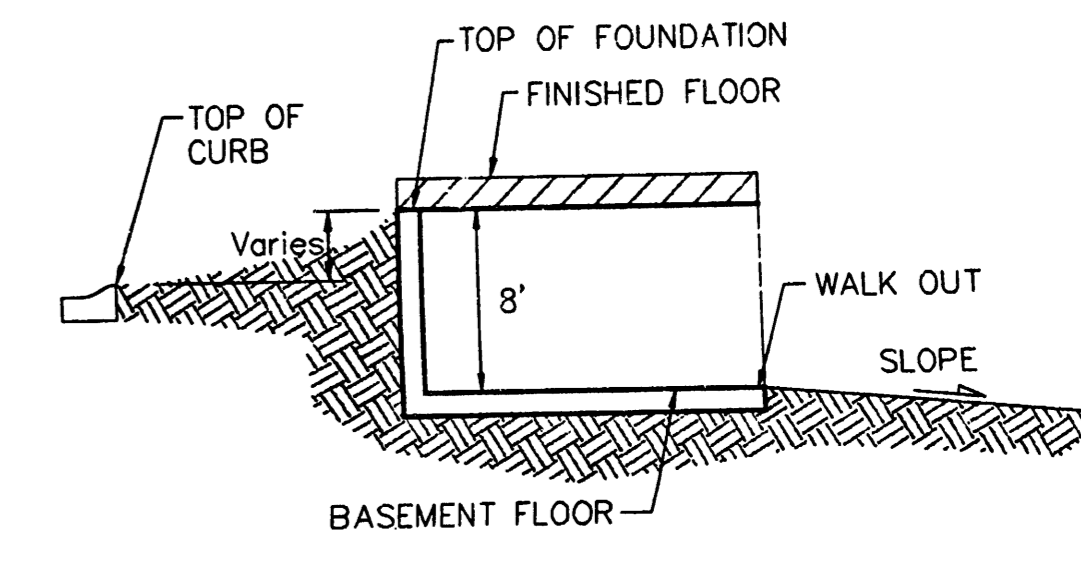


POND DATA:
 STATIC POOL ELEVATION: 164.0 City Datum
 BOTTOM ELEVATION: 156.0 City Datum
 100 YEAR DESIGN WATER SURFACE: 166.9 City Datum

SCALE: 1" = 60'
 • = Iron



TYPICAL VIEW OUT
 NO SCALE



TYPICAL WALK OUT
 NO SCALE

NOTES:

Proposed Top of Foundation Elevations Are Shown On Plans. Contractor to Set Finished Floor Elevations.

All Street Elevations Shown on Plans Are for Top of Curb (Full-Height).

This Grading Plan is Designed with View-Out & Walk Basements. Elevations Shown at Rear of House (XX.X V.O. or XX.X W.O.) Are for Minimum Opening.

BENCHMARK:
 1.35TH ST. W. & CENTRAL
 CITY OF WICHITA BENCHMARK DISC - NE COR. INTERSECTION
 32.8' N. & 24.5' E. OF C. BOTH, 39.5' NE. OF IRON AT SEC. COR.
 ELEV = 159.50 CITY DATUM
 (1346.90 M.S.L.)

MINIMUM BUILDING PAD ELEVATION FOR LOWEST OPENING TO STRUCTURES			
BLOCK	LOT(S)	ELEVATION (CITY DATUM)	ELEVATION (NGVD)
B	1,2,3,4	165.0	1352.4
C	2,3,4,12,13,14,15,25,26,27,28,29,30,31	165.0	1352.4
F	6,7,8	162.0	1349.4

HIGHLAND SPRINGS 2ND ADDITION GRADING PLAN
 WICHITA, KANSAS

BAUGHMAN COMPANY P.A.
 ENGINEERING, SURVEYING, & PLANNING
 316-262-7271 • 315 ELLIS • WICHITA, KANSAS 67211

PROJECT NUMBER _____ SHEET **3** OF **3**

DESIGN: BLP DRAWN: JAK APPROVED: DATE: SCALE: 1" = 60'