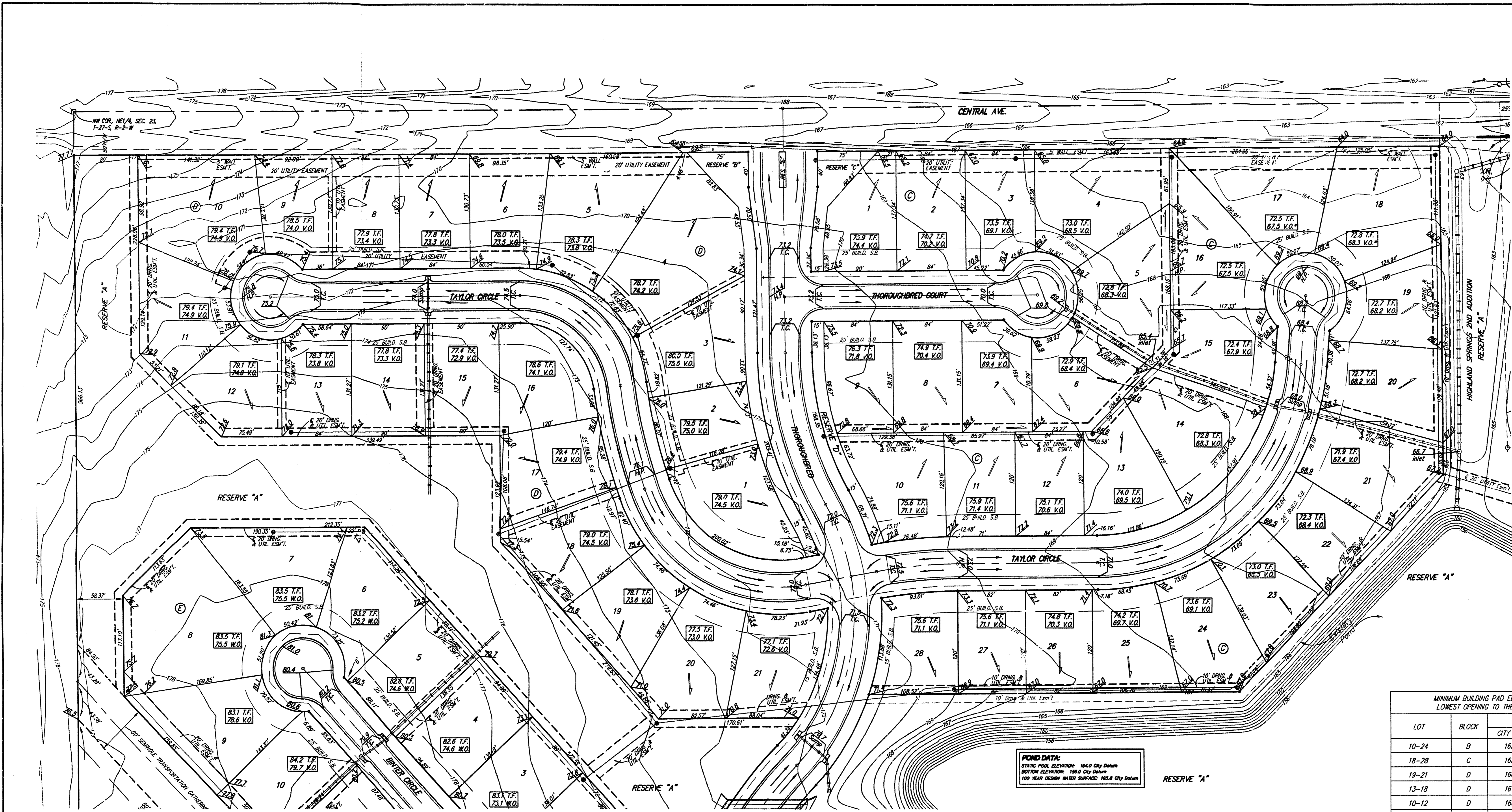
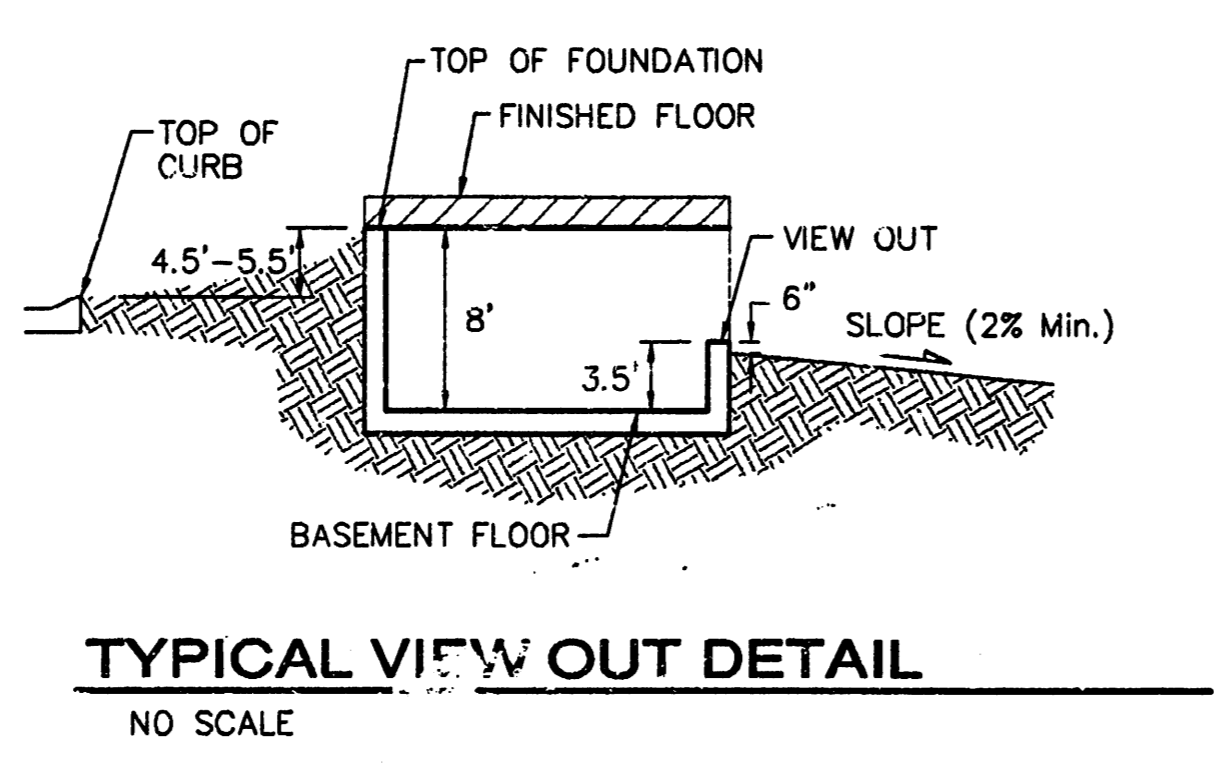


Scale: 1" = 60'  
 • = Iron



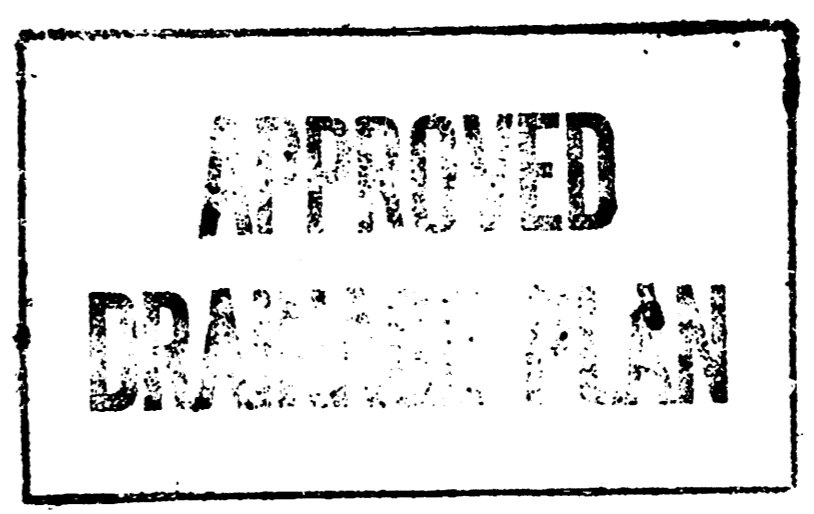
**FOND DATA:**  
 STATIC HOOR. ELEVATION: 164.0 City Datum  
 BOTTOM ELEVATION: 156.0 City Datum  
 100 YEAR DESIGN WATER SURFACE: 168.6 City Datum

LOT	BLOCK	ELEVATION	
		CITY DATUM	NGVD '29
10-24	B	165.0	1,352.4
18-28	C	165.0	1,352.4
19-21	D	166.0	1,353.4
13-18	D	167.0	1,354.4
10-12	D	168.0	1,355.4
1-4	E	166.0	1,353.4
5-7	E	167.0	1,354.4
8	E	168.0	1,355.4
9,10	E	169.0	1,356.4
11,12	F	169.0	1,356.4



**NOTES:**  
 Proposed Top of Foundation Elevations Are Shown On Plans. Contractor to Set Finished Floor Elevations.  
 All Street Elevations Shown on Plans Are for Top of Curb (Full-Height).  
 This Grading Plan is Designed with View-Outs. Elevations Shown as (XX.X V.O.)

**BENCHMARKS:**  
 135th St. W. & Central  
 City of Wichita Benchmark  
 DISC - NE Cor. Intersection,  
 32.6' N. & 24.5' E. of C both  
 39.5' NE of Iron at Sec. Cdr.  
 Elev. = 159.50 (City Datum)  
 Brass disc in curb - east side  
 of Aksarben adjacent to fire  
 hydrant 5'-4" South of SW Cor.  
 Lot 8, Block A, Highland  
 Springs 3rd Addition.  
 Elev. = 170.00 (City Datum)



**HIGHLAND SPRINGS 3<sup>RD</sup>**  
**Highland Springs 3rd Addition**  
**GRADING PLAN**  
 City of Wichita

Baughman  
 ENGINEERING | SURVEYING | PLANNING | LANDSCAPE ARCHITECTURE

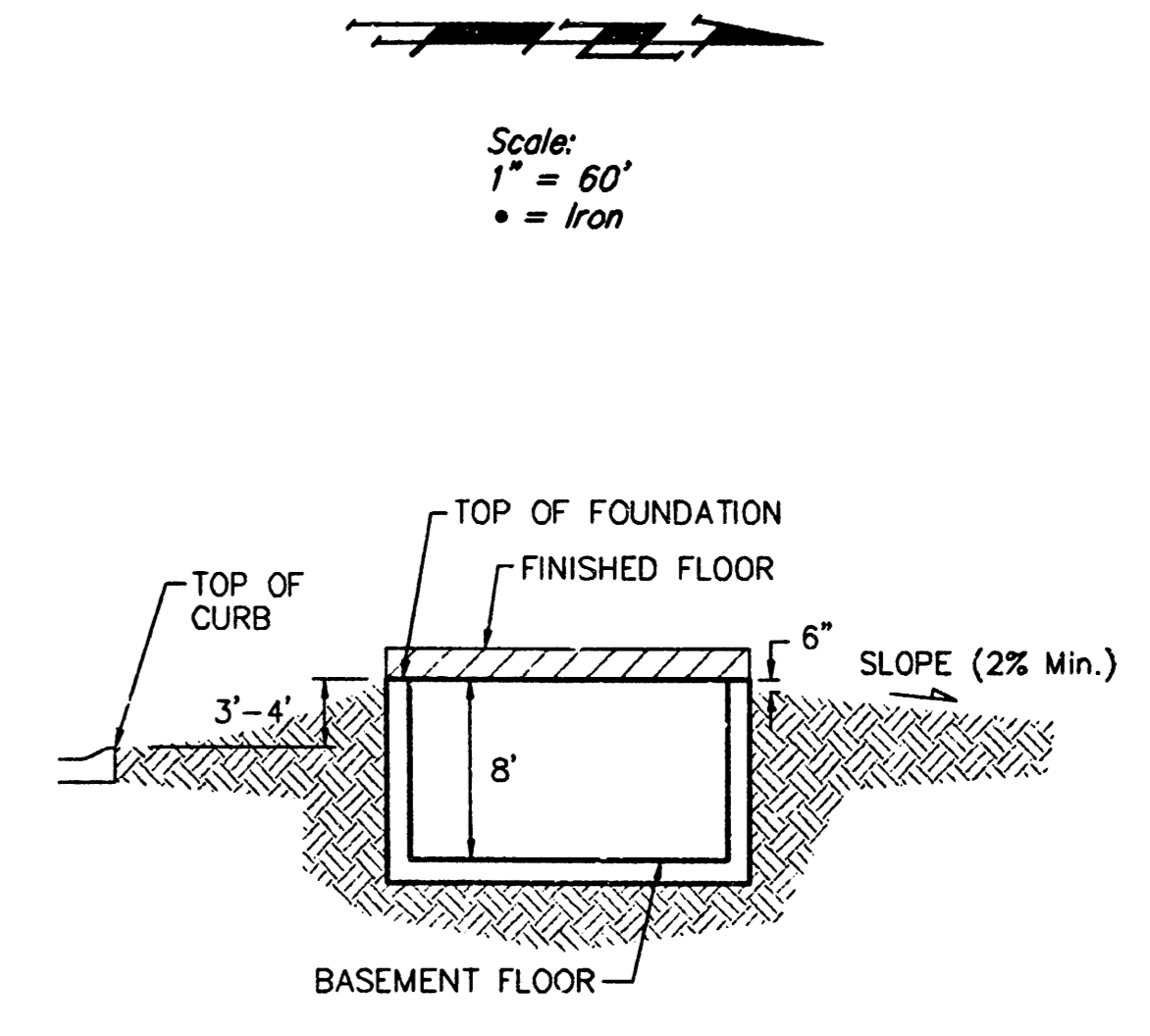
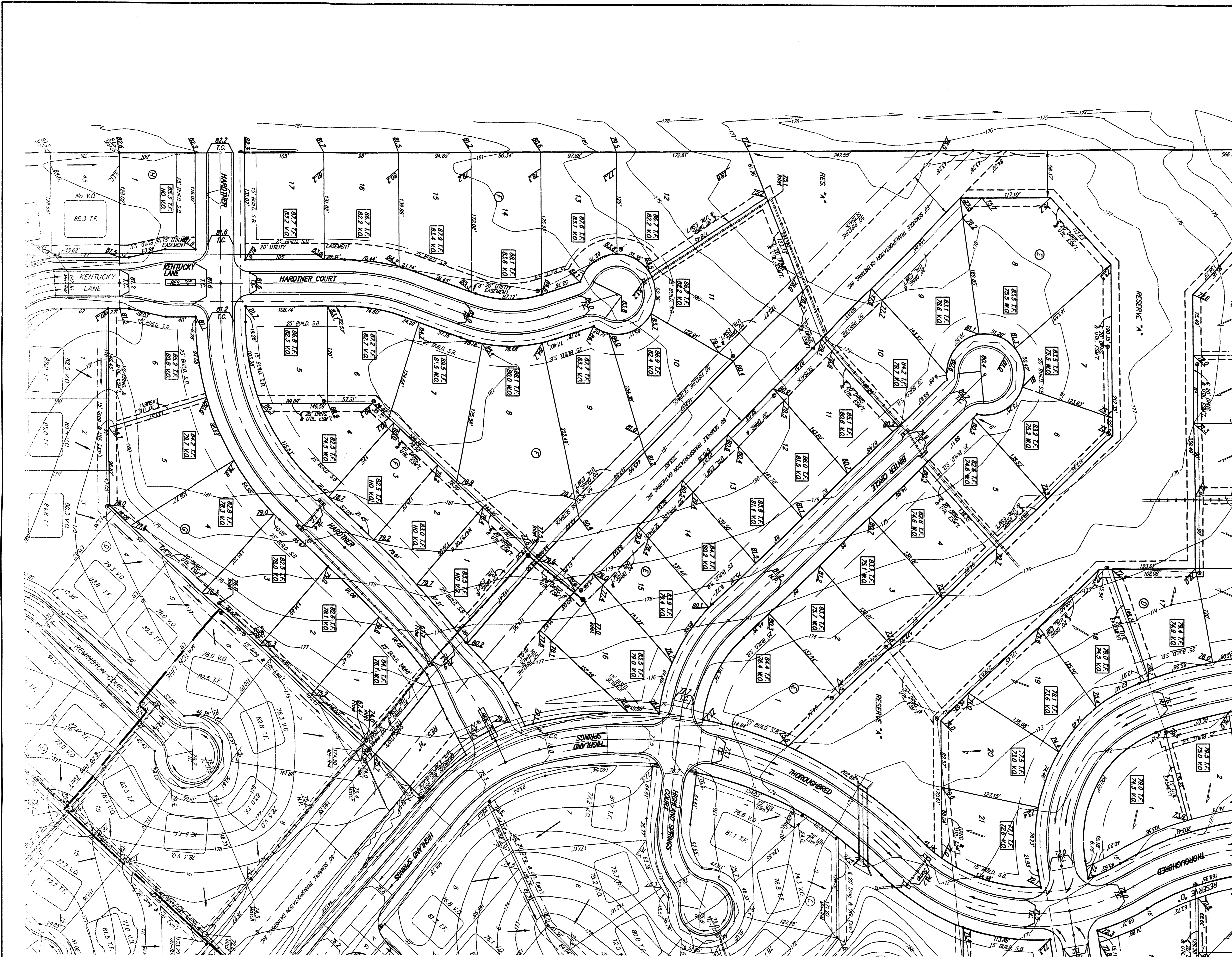
REVISIONS  
 6/15/04 JAK  
 Proposed Open to View Out, Lot 7 & 8, Block C

DESIGN  
 BLF/BLG  
 APPROVED  
 SCALE NOTED  
 SHEET

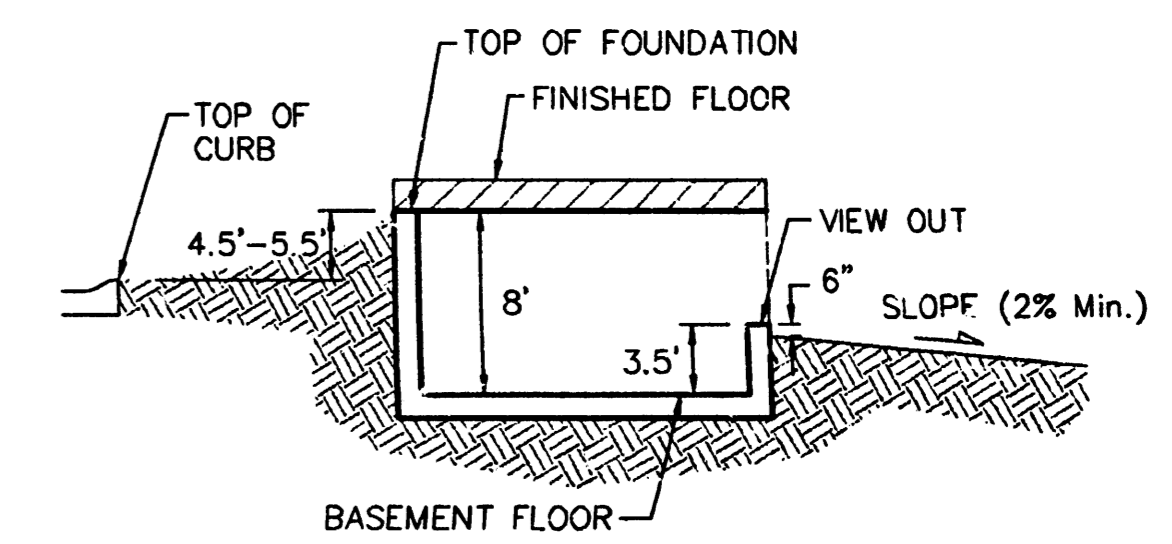
DRAWN  
 BLG  
 DATE  
 17MAY02

**1 OF 3**

F:\Client\Highland\Highland3\grade.dwg



**TYPICAL NON-VIEW OUT DETAIL**  
NO SCALE

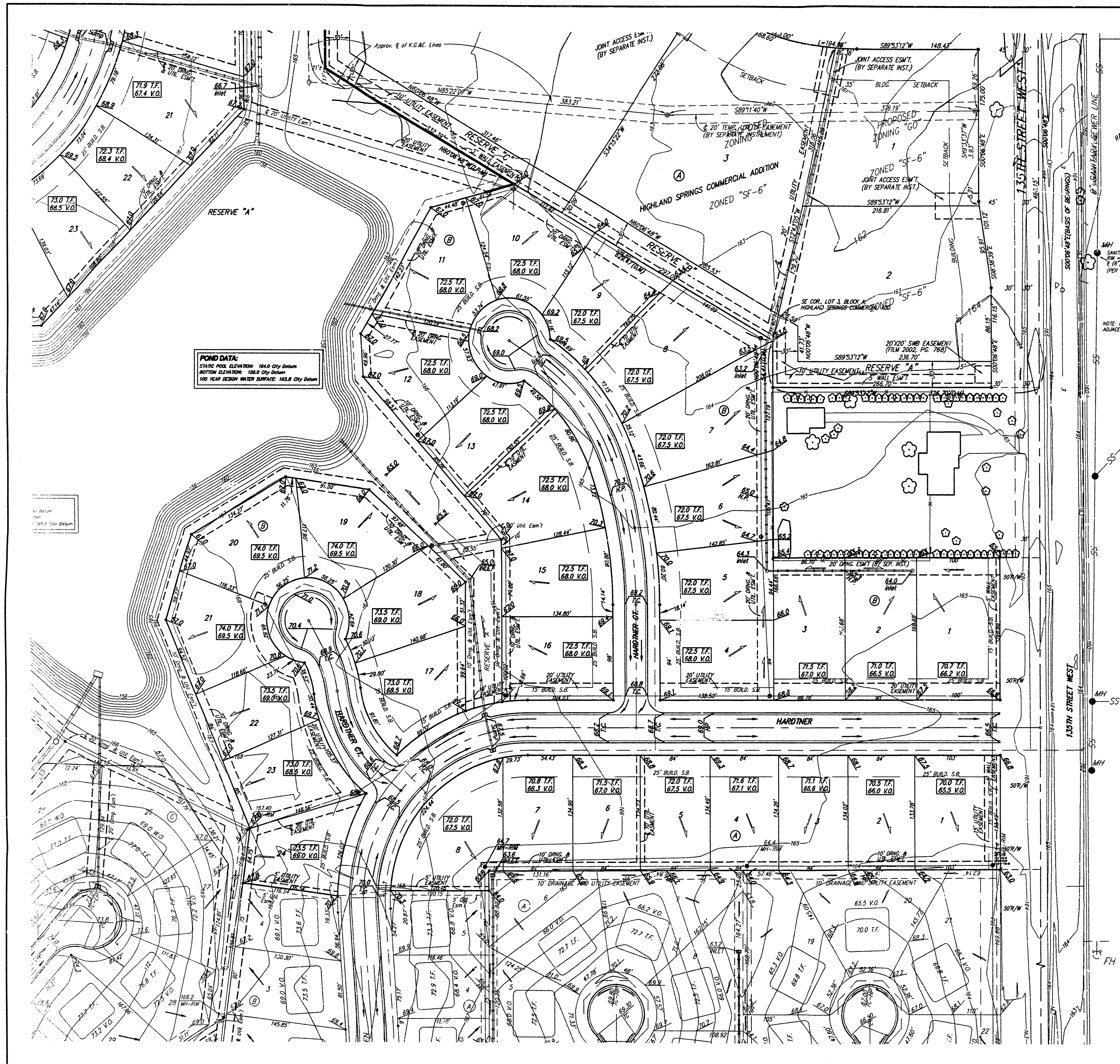


**TYPICAL VIEW OUT DETAIL**  
NO SCALE

**NOTES:**  
Proposed Top of Foundation Elevations Are Shown On Plans. Contractor to Set Finished Floor Elevations.  
All Street Elevations Shown on Plans Are for Top of Curb (Full-Height).  
This Grading Plan is Designed with View-Outs. Elevations Shown as (XX.X V.O.)  
Lot dimensions have been omitted on this plan, refer to the recorded plat for this information.

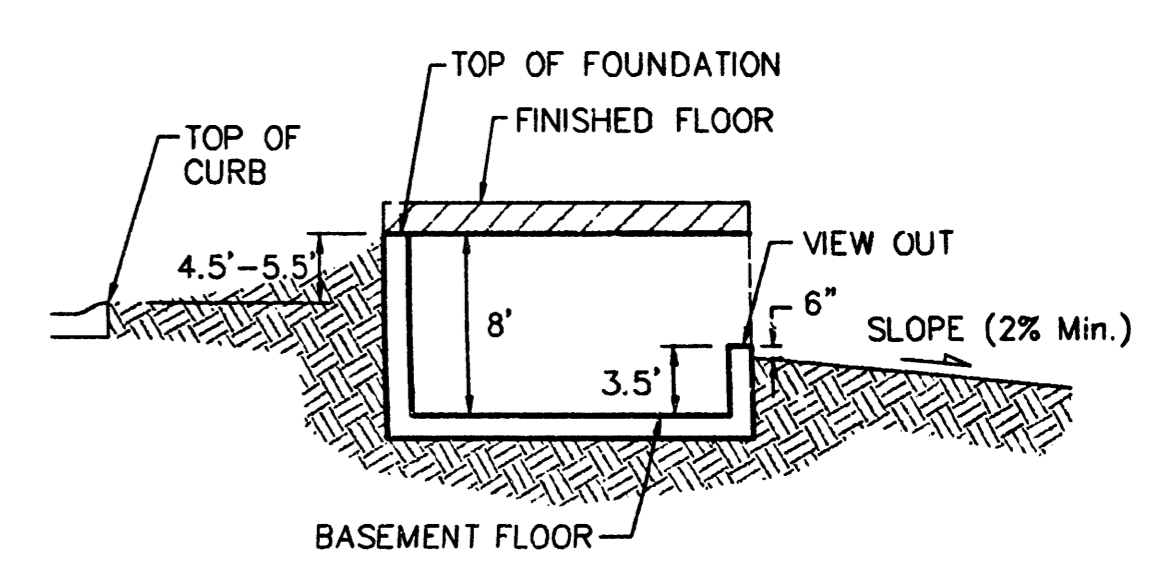
**BENCHMARK:**  
City of Wichita benchmark disk 32.6' N and 24.5' E of intersection of 35th St. W. and Central, 39.5' NE of iron at section corner.  
Elev. = 159.50 City Datum

		Highland Springs 3rd Addition	
		<b>GRADING PLAN</b>	
City of Wichita		Baughman Company, P.A. 315 Elm St. Wichita, KS 67211 P 316.263.7171 F 316.262.0149	
ENGINEERING   SURVEYING   PLANNING   LANDSCAPE ARCHITECTURE		DESIGN: BLP/BLG DRAWN: BLG	
REVISIONS: 7/23/04	JAK	APPROVED:	DATE: 17MAY02
Number One to View Out, Lot 101A, Block 2 and Lots 101J, Block 2		SCALE:	NOTED:
		SHEET:	<b>2 OF 3</b>
F:\Cradle\Highland\highland3\gradg.dwg			



**FOND DATA:**  
 STAGNANT POOL ELEVATION: 164.0 City Datum  
 BOTTOM ELEVATION: 126.0 City Datum  
 100 YEAR EXCESS WILDER SURVIVAL: 145.8 City Datum

Scale: 1" = 60'  
 • = 100'



**TYPICAL VIEW OUT DETAIL**  
 NO SCALE

**NOTES:**  
 Proposed Top of Foundation Elevations Are Shown On Plans. Contractor to Set Finished Floor Elevations.  
 All Street Elevations Shown on Plans Are for Top of Curb (Full-Height).  
 This Grading Plan is Designed with View-Outs. Elevations Shown as (XX.X V.O.)  
 Lot dimensions have been omitted on this plan, refer to the recorded plat for this information.  
 Benchmarks:  
 135th St. W. & Central City of Wichita Benchmark DISC - NE Cor. Intersection, 32.6' N. & 24.5' E. of C both. 39.5' NE of Iron at Sec. Cor. Elev. = 159.50 (City Datum)  
 Brass disc in curb - east side of Aksarben adjacent to fire hydrant 5'± South of SW Cor. Lot B, Block A, Highland Springs 3rd Addition. Elev. = 170.00 (City Datum)

		<b>Highland Springs 3rd Addition GRADING PLAN</b> City of Wichita	
<small>Baughman Company, P.A. 3130 S. Wichita, KS 67201 PH: 316-261-7100          ENGINEERING   SURVEYING   PLANNING   LANDSCAPE ARCHITECTURE</small>			
REVISIONS 4/28/04 JAK/NBW Home plat elev. and some grades from 24.5' Block B 5/07/04 JAK/NBW Home plat elev. Lot 14, Block A	DESIGN BLP/BLG	DRAWN BLP	DATE 17MAY02
SCALE NOTED		SHEET <b>3 OF 3</b>	
<small>F:\Cred\Highland\highland3\grades.dwg</small>			