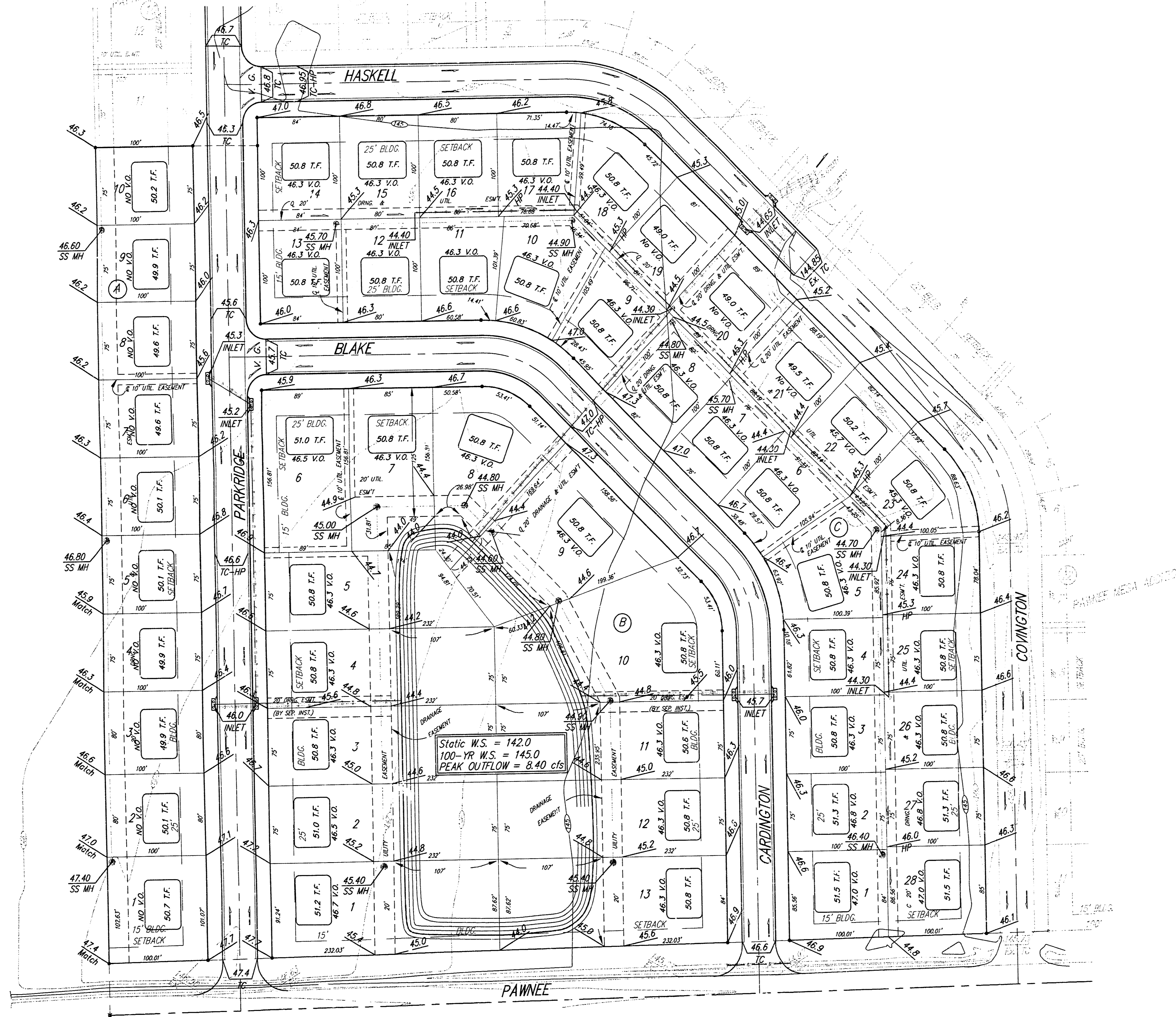


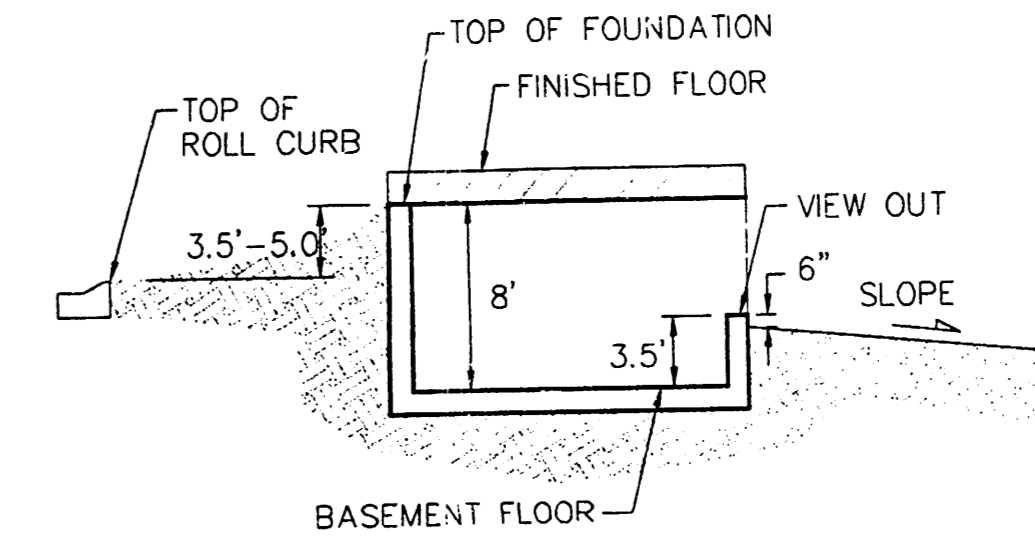
BENCHMARK:
 C.O.W. Benchmark disc 1/2 mi.
 east and 34' south of C of
 Pawnee and 119th St. W.
 (6' West of hedge row)
 Elev. = 145.50 (City Datum)



Scale: 1"=60'



NOTE:
 Proposed top of foundation
 are shown on plans.
 Contractor to set finish floor elevation.
 All street elevations shown on plans
 are for top of curb (full height).
 View-out elevations are denoted as
 XX.X' V.O.



TYPICAL VIEW OUT
 NO SCALE

HUNTER'S RIDGE ADDITION
GRADING PLAN
 WICHITA, KANSAS

BAUGHMAN COMPANY P.A.
 ENGINEERING, SURVEYING, & PLANNING
 316 - 262-7271 • 318 ELLIS • WICHITA, KANSAS 67211

DESIGN	DRAWN	APPROVED	DATE	SCALE	SHEET
NSW	TMC		5-99	NOTED	1

HUNTER'S RIDGE 99-02-1292