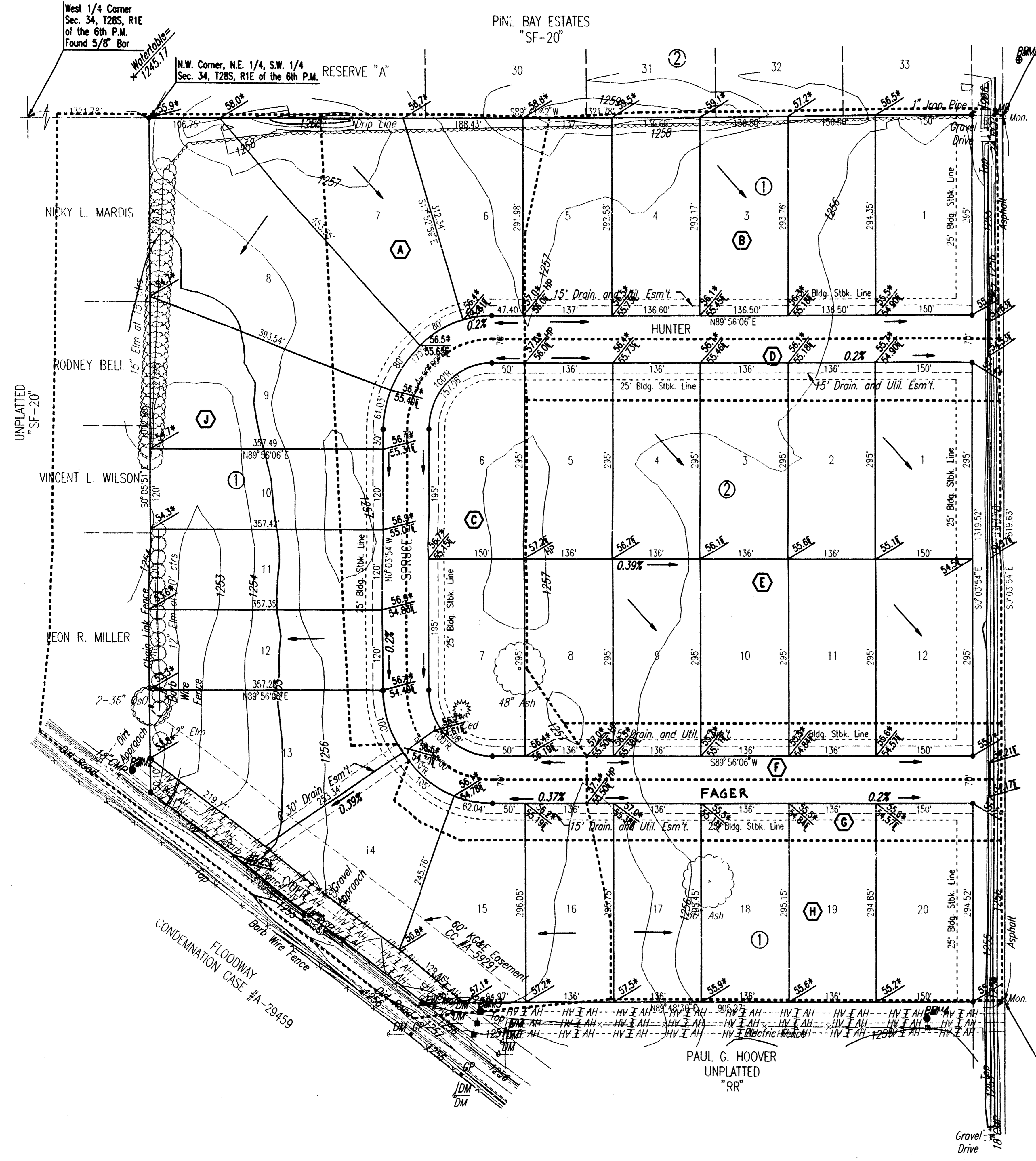


DRAINAGE PLAN HUNTINGTON POINTE ADDITION TO SEDGWICK COUNTY, KANSAS



N.E. Corner, N.E. 1/4, S.W. 1/4
Sec. 34, T28S, R1E of the 6th P.M.
Found 1" Iron Pipe

West 1/4 Corner
Sec. 34, T28S, R1E
of the 6th P.M.
Found 3/8" Bar

N.W. Corner, N.E. 1/4, S.W. 1/4
Sec. 34, T28S, R1E of the 6th P.M.
RESERVE "A"

PIN. BAY ESTATES
"SF-20"

SCALE: 1"=100'

• = IRON SET, UNLESS NOTED OTHERWISE
PROJECT B.M.: RAILROAD SPIKE ON WEST FACE OF NORTH POLE
STRUCTURE OF HIGHLINE ELECTRIC NEAR S.E.
CORNER OF PROPERTY. ELEV.=1257.20 M.S.L.
B.M.: CHISELED "I" AT N.W. CORNER OF HUBGUARD ON BRIDGE
OVER WICHTA-VALLEY CENTER FLOODWAY FROM U.S.G.S.
T145WB. ELEV.=1268.58 M.S.L.

LEGEND

- (A) BASIN IDENTIFIER
- BASIN BOUNDARY
- STORM WATER FLOW DIRECTION
- ▲ SPOT ELEVATION
- ▲ HIGH POINT ELEVATION
- ▲ MATCH EXISTING ELEVATION
- ▲ FLOWLINE ELEVATION

DSNR: KER OPER. KEE SCALE: 1"=100.00
 G:\1998\08\28\Drainage 03-03-1999 11:04:04 am

FLOODWAY
CONDEMNATION CASE #A-28459

HUNTINGTON POINTE ADDN

APPROVED
DRAINAGE PLAN

*Approved by the
County*