

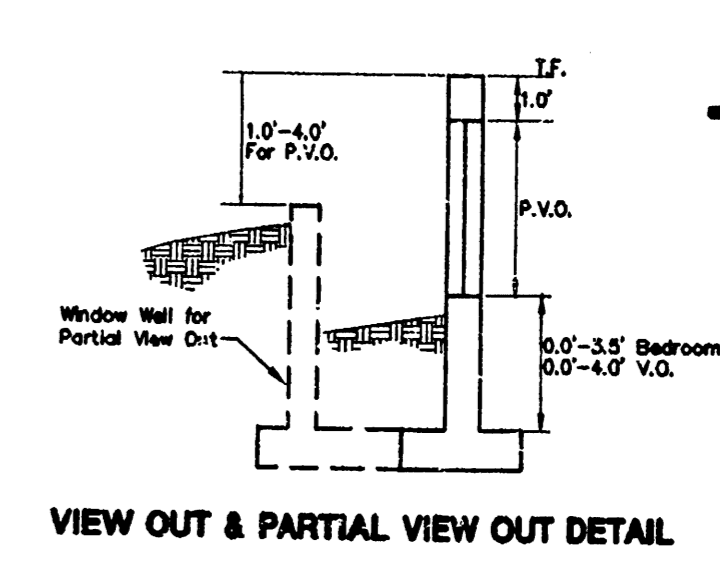
VICINITY MAP

MINIMUM OPENING ELEVATIONS (LOWEST OPENINGS)				
LOT	BLOCK	100-YR WSEL (CITY DATUM)	ELEVATION (CITY DATUM)	ELEVATION (NGVD)
20	1	171.1	174.1	1361.5
21	1	172.1	174.1	1361.5
22	1	172.8	174.8	1362.2
23	1	173.5	175.5	1362.9
24	1	174.8	176.8	1364.2

BENCHMARK

CITY DISC AT 25TH ST. N. AND WOODLAWN BLVD., 24 FEET NORTH OF THE CENTERLINE OF THE EAST-WEST HEDGEROW AND 45.3 FEET WEST OF THE CENTERLINE OF WOODLAWN BLVD. ELEV.=189.16 CITY DATUM 1376.56 NGVD

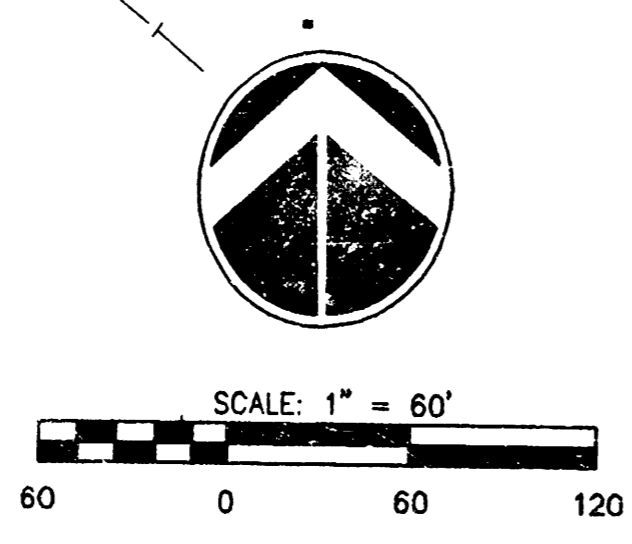
APPROVED DRAINAGE PLAN



IRONHORSE AT OXFORD ADDITION

LEGEND

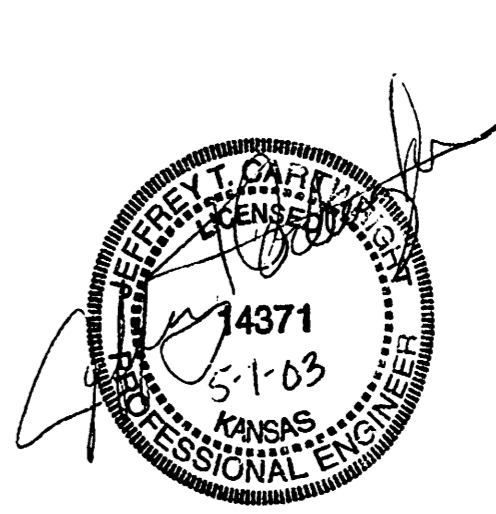
V.O.	= VIEW OUT BASEMENT	1380.0	= PROPOSED GROUND ELEVATION
W.O.	= WALK OUT BASEMENT	---	= PROP. SAN. SEWER
T.V.O.	= TERRACED VIEW OUT	---	= EX. SAN. SEWER
P.V.O.	= WALL HEIGHT GREATER THAN 42"	---	= EX. STORM WATER SEWER
	= VIEW OUT ON CORNER OF HOUSE	---	= PROP. STORM WATER SEWER
NO V.O.	= WINDOW WELLS	---	= EX. WATER LINE
	= NO VIEW OUT BASEMENT	---	= PROP. WATER LINE
		→	= FLOW ARROW



FINAL LOT GRADING PLAN IRONHORSE AT OXFORD ADDITION

OWNERS/DEVELOPER: LEEWOOD

DATE: MAY 2003



MKEC
ENGINEERING CONSULTANTS
411 N. WEBB ROAD
WICHITA, KS. 67208
316-684-9690