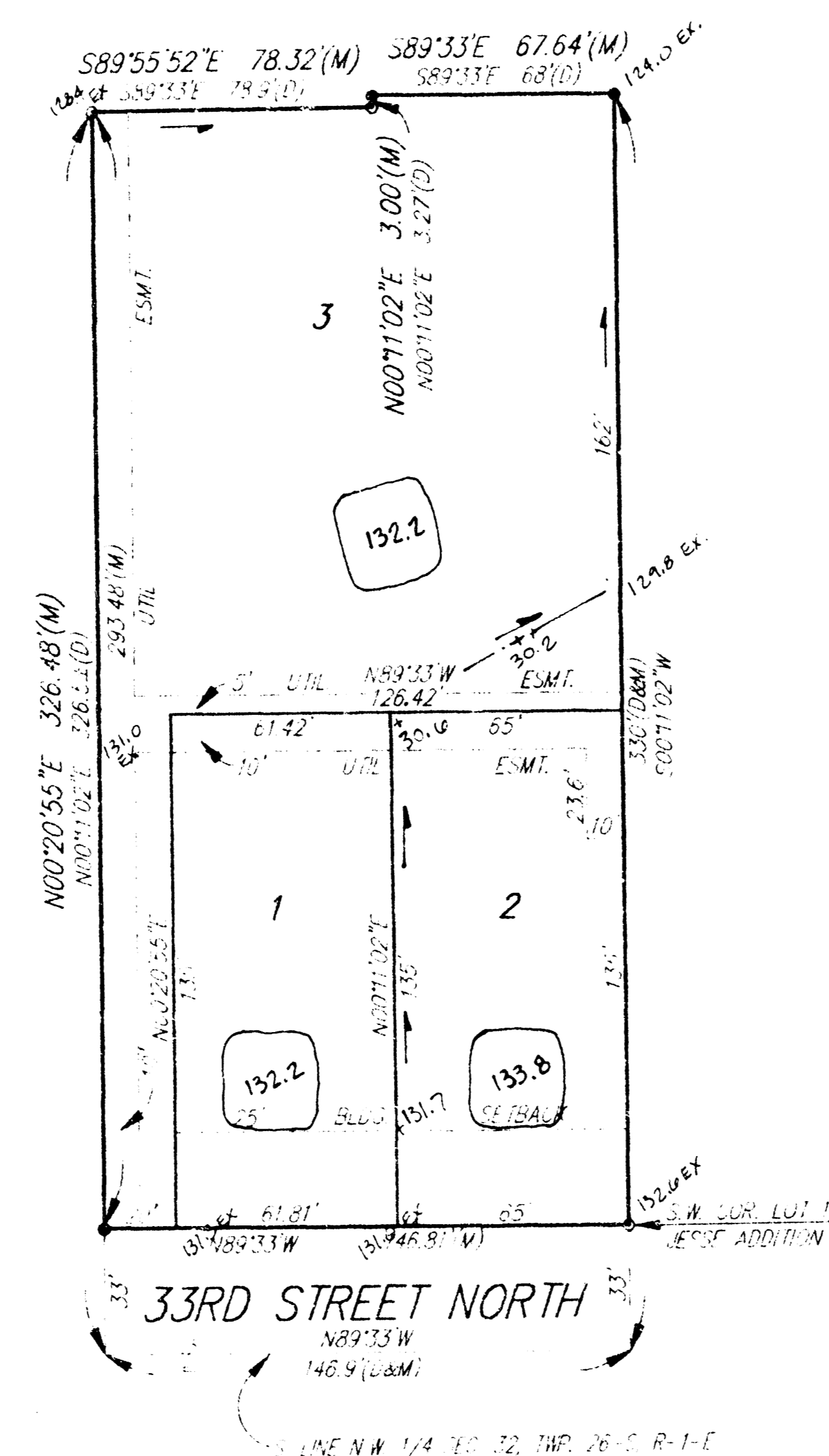


JESSE 2ND ADDITION

WICHITA, SEDGWICK COUNTY, KANSAS



1" = 50'
 ● = 1/2" Rebar w/ "Baughman" Logo (Set)
 ○ = 1/2" Iron (Found)
 Found rebar is of unidentified origin unless identified on sketch.
 (D) = Described
 (M) = Measured
 Bearing Date = Assumed

**APPROVED
DRAINAGE PLAN**

JESSE R LD

Subdivision Lot Grading Plan June 7, 93

BAUGHMAN COMPANY P. A.
 ENGINEERING & SURVEYING
 316/264-7271 • 315 ELLIS • WICHITA, KANSAS 67211

PLAT CARD MARKED 15 NOV 93

FILMED FROM THE BEST AVAILABLE COPY