

APPROVED DRAINAGE PLAN

NOTES:

1. PROPOSED TOP OF FOUNDATION ELEVATIONS ARE SHOWN ON PLANS. CONTRACTOR TO SET FINISHED FLOOR AND GARAGE FLOOR ELEVATIONS. ALL STREET ELEVATIONS SHOWN ON PLANS ARE FOR TOP OF CURB (FULL-HEIGHT).
2. THIS GRADING PLAN IS DESIGNED WITH VIEW-OUTS AND WALK-OUTS. ELEVATIONS SHOWN AS XXX.X V.O. DEPICT VIEW-OUT STRUCTURES. ELEVATIONS SHOWN AS XXX.X V.O. DEPICT WALK-OUT STRUCTURES.
3. ALL LOTS SHALL MEET MINIMUM PAD REQUIREMENT AS SHOWN ON THE RECORDED PLAN. (SHOWN TO RIGHT)
4. LOT DIMENSIONS HAVE BEEN OMITTED ON THIS PLAN. REFER TO THE RECORDED PLAT FOR FINAL DIMENSION, EASEMENT, & BUILDING SETBACK INFORMATION.
5. HOUSE PAD ELEVATIONS DEPICTED WITH BOLD OUTLINES AND SHOWN WITH THE SYMBOL INDICATES THAT DEEP FOOTINGS OR DEEP FOUNDATIONS MAY BE REQUIRED.
6. SOME LOTS ARE DESIGNED WITH NON-STANDARD, WALK-OUT STRUCTURES. THESE ARE SHOWN ON THIS PLAN WITH A VIEW-OUT WALL HEIGHT BELOW THE VIEW-OUT ELEVATION.
7. A DRAINAGE PLAN HAS BEEN DEVELOPED FOR THIS SUBDIVISION AND IS ON FILE WITH THE CITY OF WICHITA, KANSAS. DRAINAGE INTENT SHALL REMAIN AS DEPICTED OR AS MODIFIED WITH THE APPROVAL OF THE CITY ENGINEER OF THE CITY OF WICHITA, KANSAS. NO OBSTRUCTIONS WHICH IMPED THE FLOW OF THIS DRAINAGE PLAN SHALL BE ALLOWED.

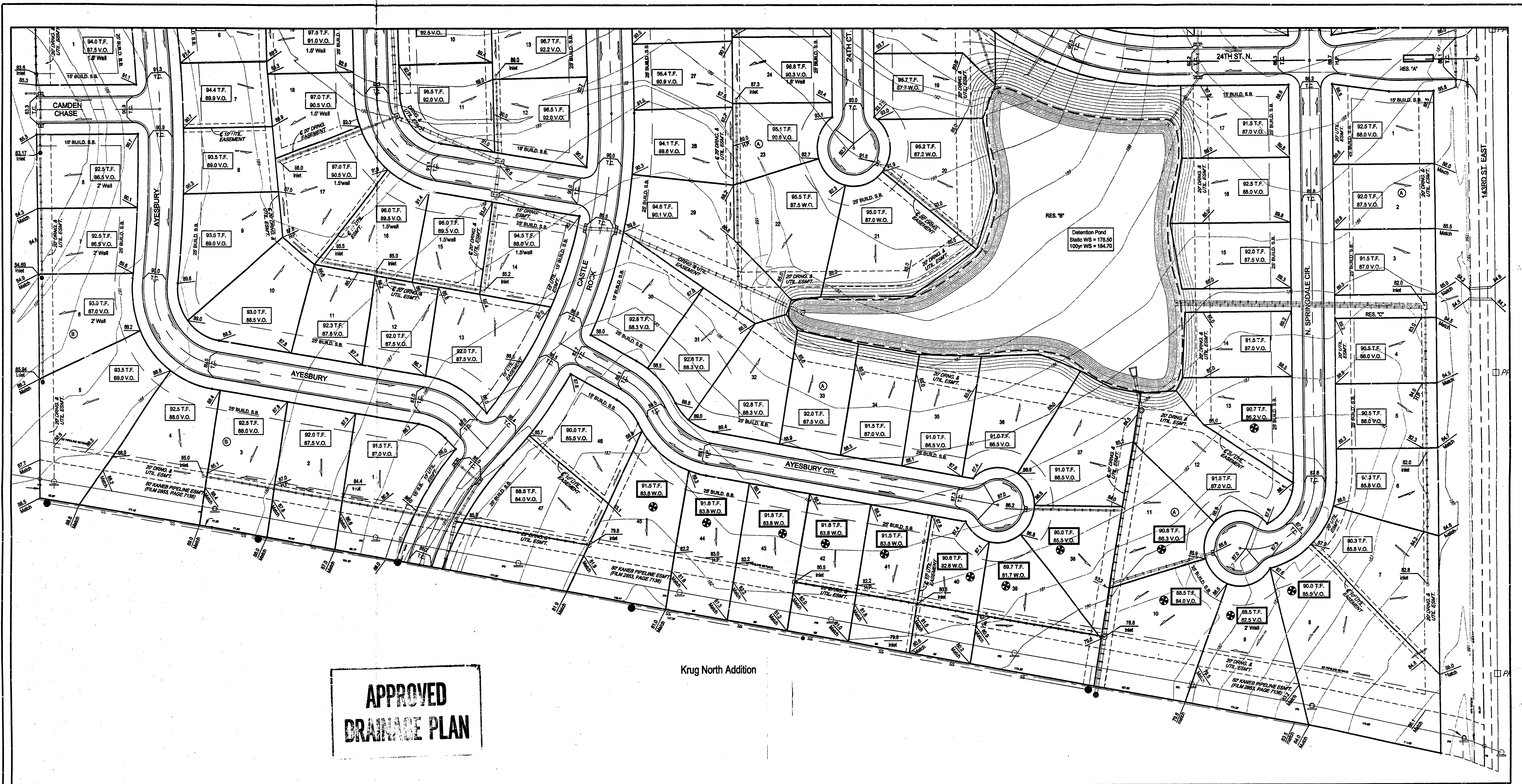
LOT	BLOCK	ELEVATION CITY DATUM
12-17	A	186.0
18-22,29	A	186.0
32-37	A	186.0

SCALE: 1" = 60'
• = Iron

BENCHMARK:
"C" OUT IN THE MIDDLE OF THE N. HEADWALL OF R.C.B.C. ON 21ST STREET NORTH.
1004.3' W. & 22.1' N. OF THE SE COR. SE 1/4, SEC. 2, TWP. 27-5, R. 2-E.
ELEV. = 1723.3 CITY DATUM (1502.63 NGVD29)

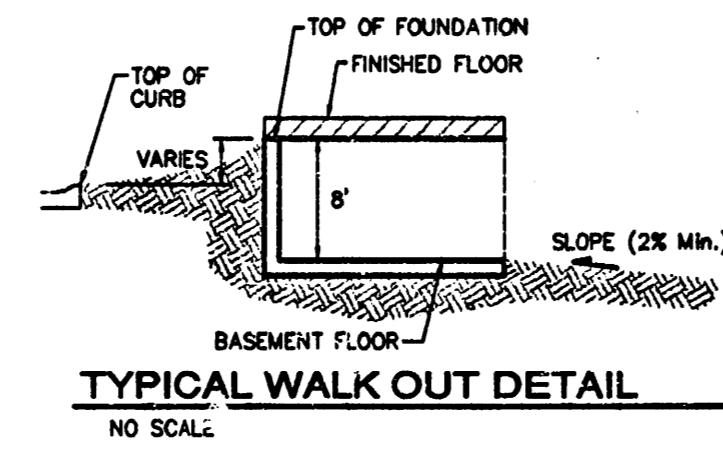
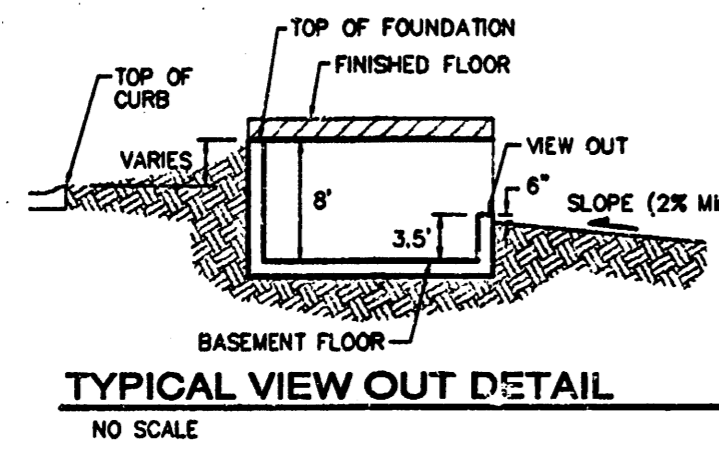
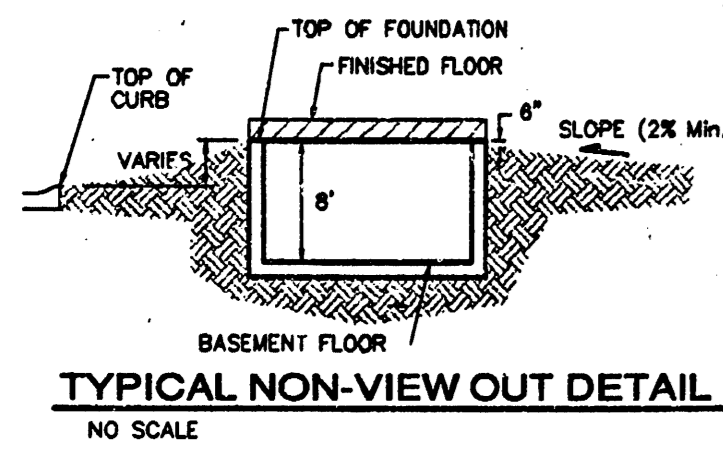


Baughman		KRUG NORTH 2ND ADDITION	
SUBDIVISION GRADING PLAN		WICHITA, KANSAS	
Baughman Company, P.A. 318 8th St., Wichita, KS 67211 P 316-262-1111 F 316-262-1119			
ENGINEERING SURVEYING PLANNING LANDSCAPE ARCHITECTURE			
PROJECT NUMBER	DESIGN	DRAWN	
	BLG	BLG	
REVISIONS:	APPROVED	DATE	
12/28/05	ATD	23May05	
Prepared and Checked	SCALE	noted	
		SHEET	
			1 OF 2



**APPROVED
DRAINAGE PLAN**

Krug North Addition



NOTES:

1. PROPOSED TOP OF FOUNDATION ELEVATIONS ARE SHOWN ON PLANS. CONTRACTOR TO SET FINISHED FLOOR AND GARAGE FLOOR ELEVATIONS. ALL STREET ELEVATIONS SHOWN ON PLANS ARE FOR TOP OF CURB (FULL-HEIGHT).
2. THIS GRADING PLAN IS DESIGNED WITH VIEW-OUTS AND WALK-OUTS. ELEVATIONS SHOWN AS XXX V.O. DEPICT VIEW-OUT STRUCTURES. ELEVATIONS SHOWN AS XXX W.O. DEPICT WALK-OUT STRUCTURES.
3. ALL LOTS SHALL MEET MINIMUM PAD REQUIREMENT AS SHOWN ON THE RECORDED PLAT. (SHOWN TO RIGHT)
4. LOT DIMENSIONS HAVE BEEN OMITTED ON THIS PLAN. REFER TO THE RECORDED PLAT FOR FINAL DIMENSION, EASEMENT, & BUILDING SETBACK INFORMATION.

MINIMUM BUILDING PAD ELEVATIONS FOR LOWEST OPENING TO THE STRUCTURES

LOT	BLOCK	ELEVATION CITY DATUM
12-17	A	186.0
18-22,29	A	186.0
32-37	A	186.0

5. HOUSE PAD ELEVATIONS DEPICTED WITH BOLD OUTLINES AND SHOWN WITH THE SYMBOL INDICATES THAT DEEP FOOTINGS OR DEEP FOUNDATIONS MAY BE REQUIRED.
6. SOME LOTS ARE DESIGNED WITH NON-STANDARD, VIEW-OUT STRUCTURES. THESE ARE SHOWN ON THIS PLAN WITH A VIEW-OUT WALL HEIGHT BELOW THE VIEW-OUT ELEVATION.
7. A DRAINAGE PLAN HAS BEEN DEVELOPED FOR THIS SUBDIVISION AND IS ON FILE WITH THE CITY OF WICHITA, KANSAS. DRAINAGE INTENT SHALL REMAIN AS DEPICTED OR AS MODIFIED WITH THE APPROVAL OF THE CITY ENGINEER OF THE CITY OF WICHITA, KANSAS. NO OBSTRUCTIONS WHICH IMPEDS THE FLOW OF THIS DRAINAGE PLAN SHALL BE ALLOWED.

SCALE: 1" = 60'
• = Iron

BENCHMARK:
"I" CUT IN THE MIDDLE OF THE N. HEADWALL OF P.C.R.C. ON 21ST STREET NORTH, 1004.3' W. & 22.1' N. OF THE SE COR. SE 1/4, SEC. 2, TWP. 27-S, R. 2-E, ELEV. = 173.23 CITY DATUM (1360.63 NGVD29)



Baughman
ENGINEERING | SURVEYING | PLANNING | LANDSCAPE ARCHITECTURE

1278/05
Revised and Doublechecked

ATD

**KRUG NORTH 2ND ADDITION
SUBDIVISION
GRADING PLAN
WICHITA, KANSAS**

PROJECT NUMBER: 1278/05
DESIGN: BLO
DRAWN: BLO
DATE: 23May05
APPROVED: [Signature]
SCALE: noted
SHEET: 2 OF 2