

SCALE: 1"=80'

LEGEND:

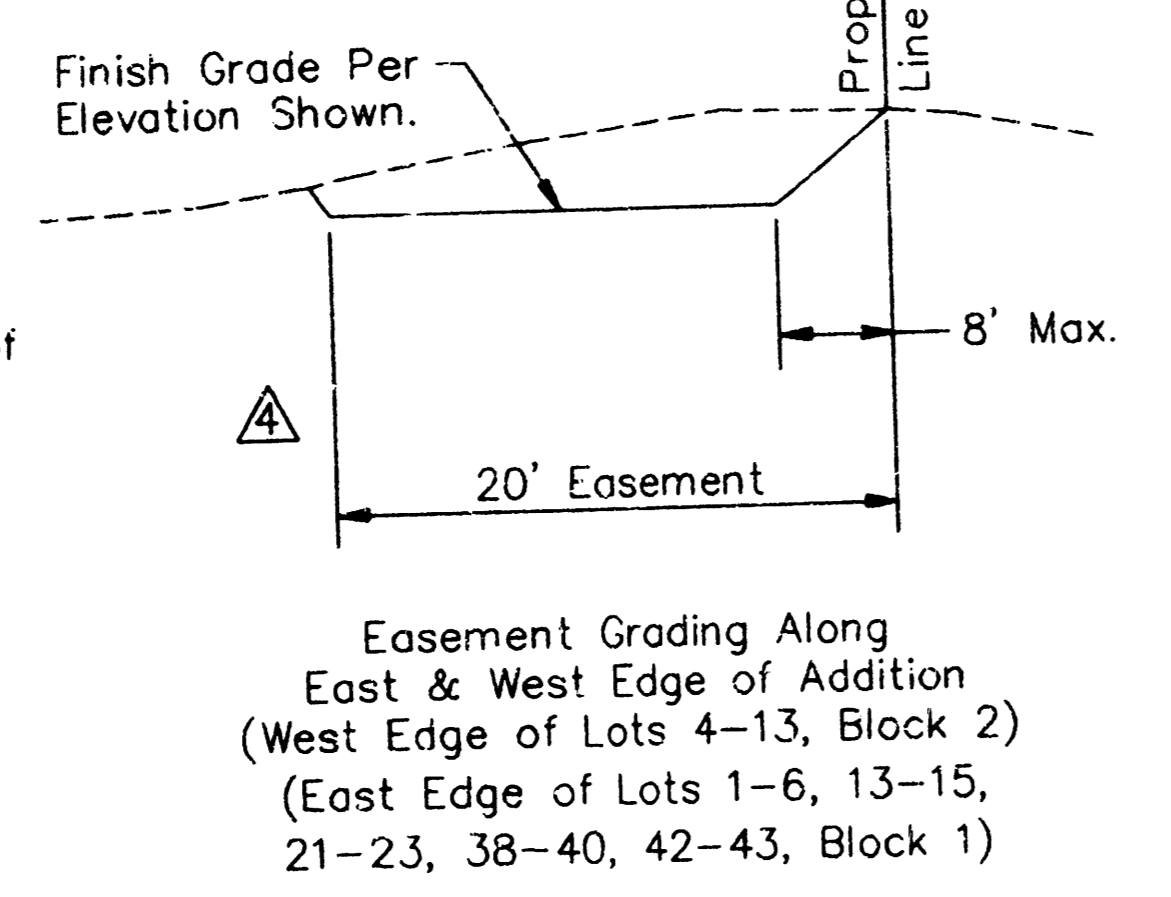
- G = GARAGE FLOOR ELEVATION
- F = TOP OF FOUNDATION WALL ELEVATION
- R = TOP OF REAR WALL ELEVATION (VIEW OUT)
- VO = VIEW OUT
- NV = NO VIEW OUT

NOTE: Δ Revised elevations:
 Lots 16-19, 32-33, 39, 44,
 48-49, Block 1
 Lots 4, Block 2

NOTE: ELEVATIONS SHOWN AT STREET RIGHT-OF-WAY ARE STREET RIGHT-OF-WAY ELEVATIONS NOT TOP OF CURB. TOP OF CURB ELEVATIONS ARE 0.5' LOWER THAN STREET RIGHT-OF-WAY.

BENCHMARK:

1. (City of Wichita Datum) Benchmark: disc, 67' south of centerline 21st St. & 79' south of section line, and 46' east of centerline 119th St. Elev. 172.08
2. 80d nail in power pole, 30' east and 50' south of Northwest Corner of Government Lot 6 in SW Quarter of Section 6, T27S, R1W. Elev. 172.08
3. 80d nail in power pole 50' south of NE corner of Government Lot 3 in NW Quarter of Section 6, T27S, R1W. Elev. 179.98
4. 80d nail in power pole 40' west and 40' north of the NW Corner of the NW Corner of Sec. 6, T27S, R1W. Elev. 175.05



APPROVED DRAINAGE PLAN

LOT GRADING PLAN
ABERDEEN 2ND ADDITION
TO WICHITA, SEDGWICK COUNTY, KANSAS

2-20-97 Δ Revised 1-21-99
 Revised 6-8-98 Δ Revised 12-14-98 Δ Revised 7-8-99

ABERDEEN 2ND

6: MAPS AND PLANS DIVISION, THE CITY OF WICHITA, KANSAS