

LEGEND:

- G = GARAGE FLOOR ELEVATION
- F = TOP OF FOUNDATION WALL ELEVATION
- R = TOP OF REAR WALL ELEVATION (VIEW OUT)
- (VO) = VIEW OUT
- (NV) = NO VIEW OUT

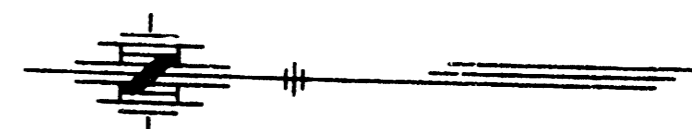
BENCHMARK:

1. (City of Wichita Datum) Benchmark: disc, 67' south of centerline 21st St. & 79' south of section line, and 46' east of centerline 119th St. Elev. 172.08
2. 80d nail in power pole, 30' east and 50' south of Northwest Corner of Government Lot 6 in SW Quarter of Section 6, T27S, R1W. Elev. 172.08
3. 80d nail in power pole 50' south of NE corner of Government Lot 3 in NW Quarter of Section 6, T27S, R1W. Elev. 179.98
4. 80d nail in power pole 40' west and 40' north of the NW Corner of the NW Corner of Sec. 6, T27S, R1W. Elev. 175.05

LOT GRADING PLAN
ABERDEEN 2ND ADDITION
TO WICHITA, SEDGWICK COUNTY, KANSAS

APPROVED
 GRADING PLAN

ABERDEEN 2ND



SCALE: 1"=80'

MINIMUM LOW OPENING ELEVATION		
LOT No.	Block No.	Elevation
1-17	3	169.0
18-25	3	167.0

LEGEND:

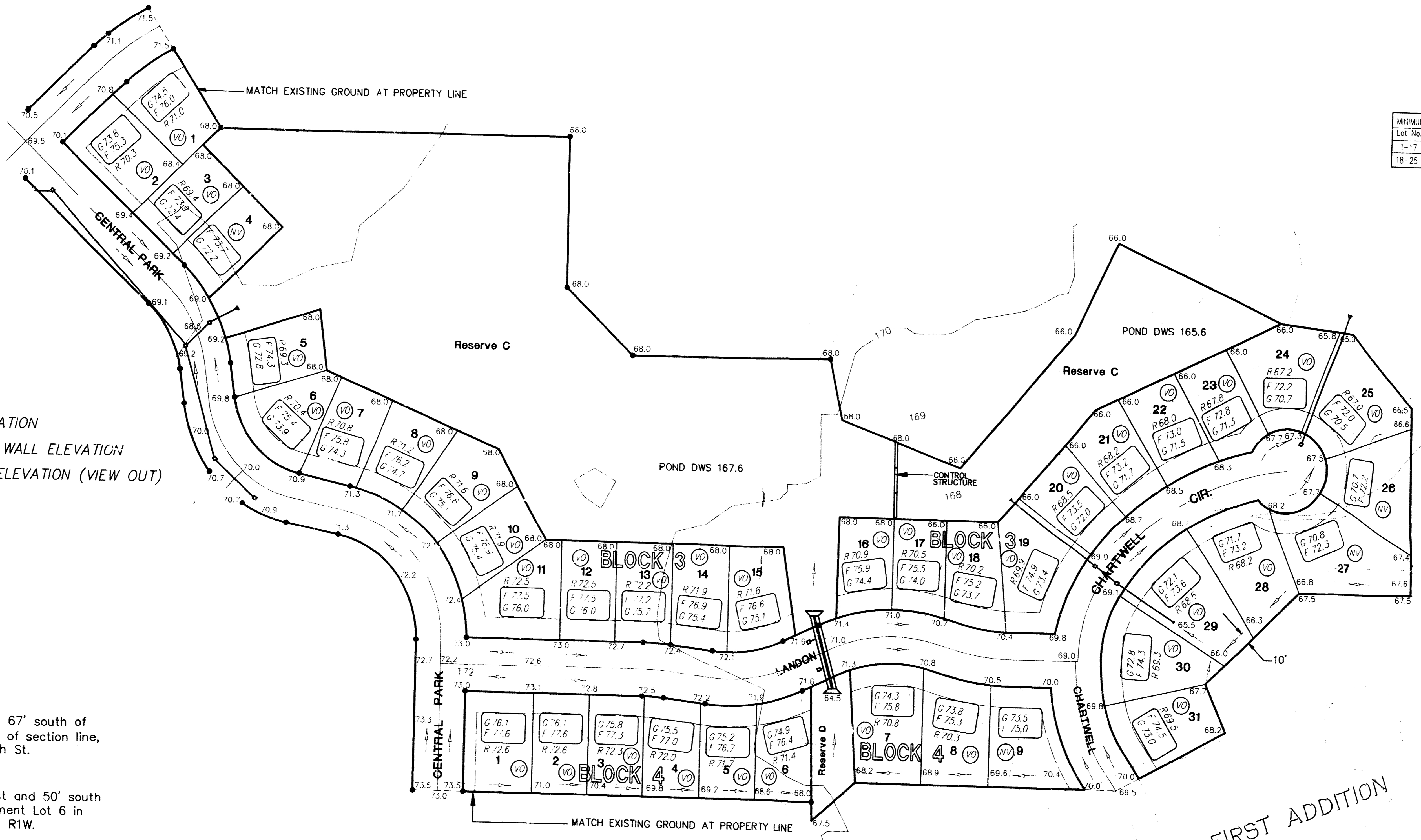
- G = GARAGE FLOOR ELEVATION
- F = TOP OF FOUNDATION WALL ELEVATION
- R = TOP OF REAR WALL ELEVATION (VIEW OUT)
- (VO) = VIEW OUT
- (NV) = NO VIEW OUT

BENCHMARK:

1. City of Wichita Benchmark disc, 67' south of centerline 21st St. & 79' south of section line, and 46' east of centerline 119th St. Elev. 172.08
2. 80d nail in power pole, 30' east and 50' south of Northwest Corner of Government Lot 6 in SW Quarter of Section 6, T27S, R1W. Elev. 172.08
3. 80d nail in power pole 50' south of NE corner of Government Lot 3 in NW Quarter of Section 6, T27S, R1W. Elev. 179.98
4. 80a nail in power pole 40' west and 40' north of the NW Corner of the NW Corner of Sec. 6, T27S, R1W. Elev. 175.05

LOT GRADING PLAN ABERDEEN 2ND ADDITION

TO WICHITA, SEDGWICK COUNTY, KANSAS



F:\APPS\DATA\555\BASE Tue Oct 10 08:13 1995 Dan HERRING Page 6 ASSUR.