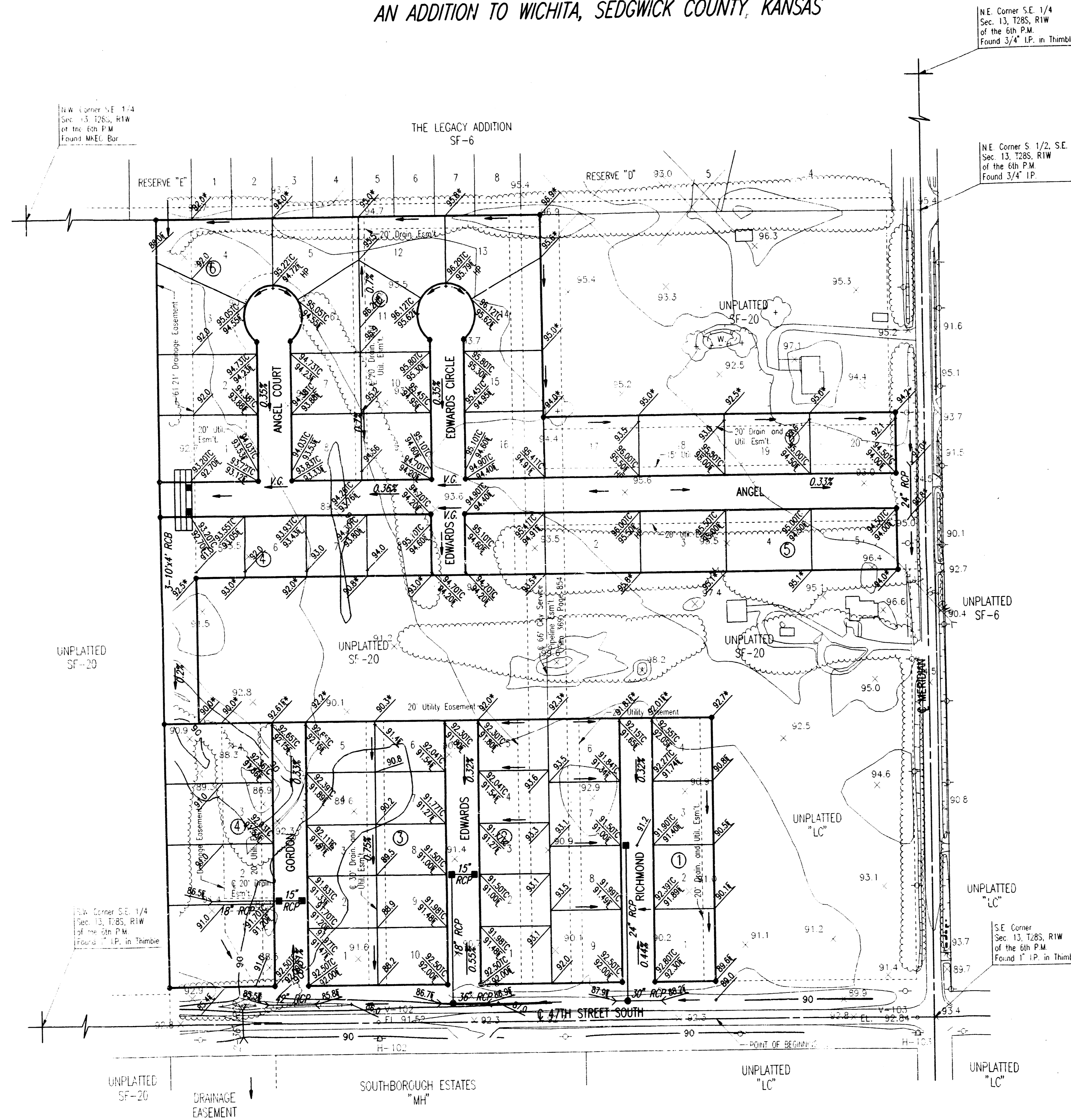


FOUR CORNER LOT GRADING  
**ANGEL ACRES**  
 AN ADDITION TO WICHITA, SEDGWICK COUNTY, KANSAS



SCALE: 1"=100'

● = IRON SET

B.M. - CITY OF WICHITA STANDARD DISC, 44' NORTH AND 30' EAST OF THE INTERSECTION OF THE CENTERLINES OF MERIDIAN AND 47TH STREET SOUTH. ELEV.=91.777 CITY DATUM

**LEGEND**

- SPOT ELEVATION
- HIGH POINT ELEVATION
- MATCH EXISTING ELEVATION
- TOP OF CURB ELEVATION
- FLOW LINE ELEVATION
- FLOW DIRECTION

MINIMUM PAD ELEVATION: (MINIMUM OPENING)

LOTS 1-4, BLOCK 1	95.0 CITY DATUM
LOTS 1-9, BLOCK 2	
LOTS 1-10, BLOCK 3	
LOTS 1-8, BLOCK 4	
LOT 1, BLOCK 5	
LOTS 1-16, BLOCK 6	
LOTS 2-5, BLOCK 5	96.0 CITY DATUM
LOTS 13-20, BLOCK 6	

ANGEL ACRES ADDN

DSMR, KIER - OPER. S&D SCALE: 1"=100.00  
 C:\1998\98695\4CORNER 02-18-1998 01:50:36 PM