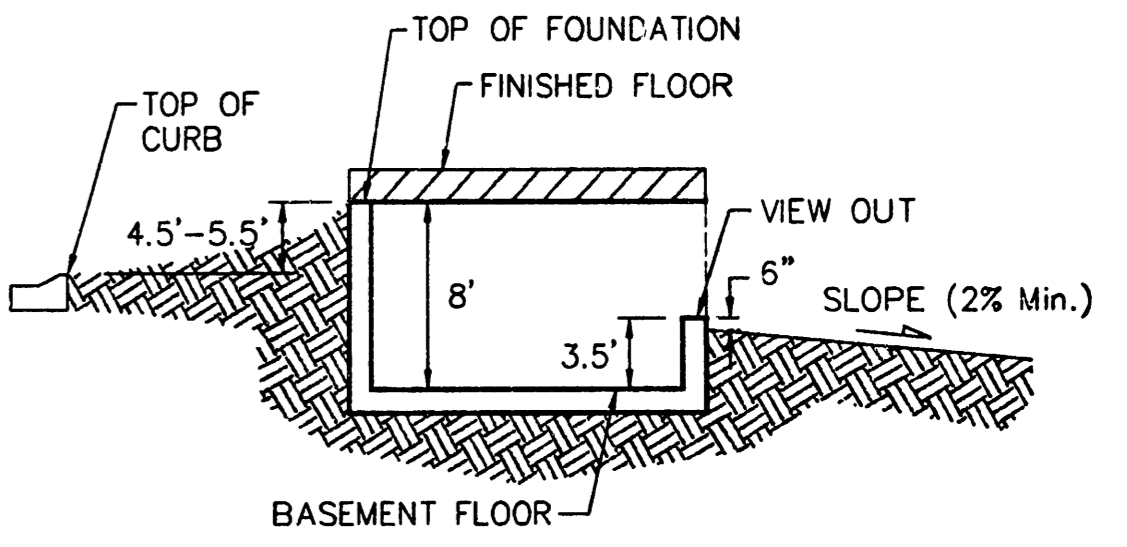


SCALE: 1" = 60'  
 • = Iron

**BENCHMARK:**

Railroad Spike In Power Pole  
 Located 27' South and 402' East  
 of the Northwest Corner of the  
 NE 1/4, Section 24, Twp. 28-S, R-1-W.  
 Elevation = 92.98 City Datum

City of Wichita Benchmark Disc SE Corner  
 of Intersection of 47th St. S. and West St.  
 42.10' E. of Centerline  
 51.00' S. of Centerline  
 99.80' E. of P.P. on SW Corner  
 23.80' S. of P.P.  
 Elevation = 92.29 City Datum



**TYPICAL VIEW OUT DETAIL**

NO SCALE

**NOTES:**

Proposed Top of Foundation Elevations Are Shown on Plans. Contractor to Set Finished Floor Elevations.

All Street Elevations Shown on Plans Are for Top of Curb (Full-Height).

This Grading Plan is Designed with View-Outs. Elevations Shown at Rear of House (XX.X V.O.)

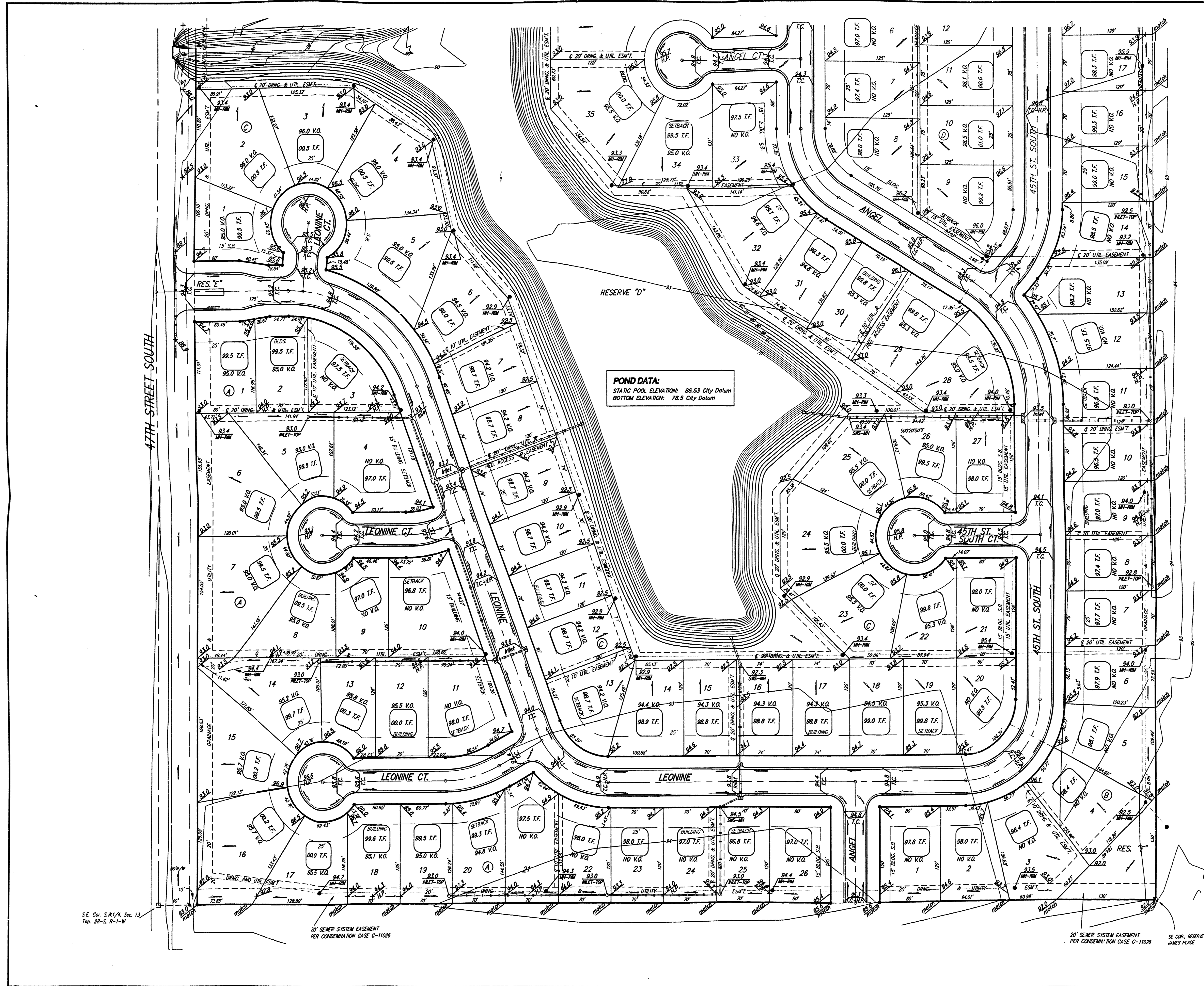
| LOT   | BLOCK | ELEVATION CITY DATUM |
|-------|-------|----------------------|
| 3-5   | B     | 95.0                 |
| 31-52 | B     | 94.0                 |
| 2-18  | C     | 94.0                 |
| 23-26 | C     | 94.0                 |
| 28-32 | C     | 94.0                 |
| 34-37 | C     | 94.0                 |
| 39-46 | C     | 94.0                 |

**ANGEL FIRE GRADING PLAN**  
 CITY OF WICHITA, SEDGWICK COUNTY, KANSAS

**ED BAUGHMAN COMPANY P.A.**  
 ENGINEERING, SURVEYING, & PLANNING  
 316-262-7271 • 315 ELLIS • WICHITA, KANSAS 67211

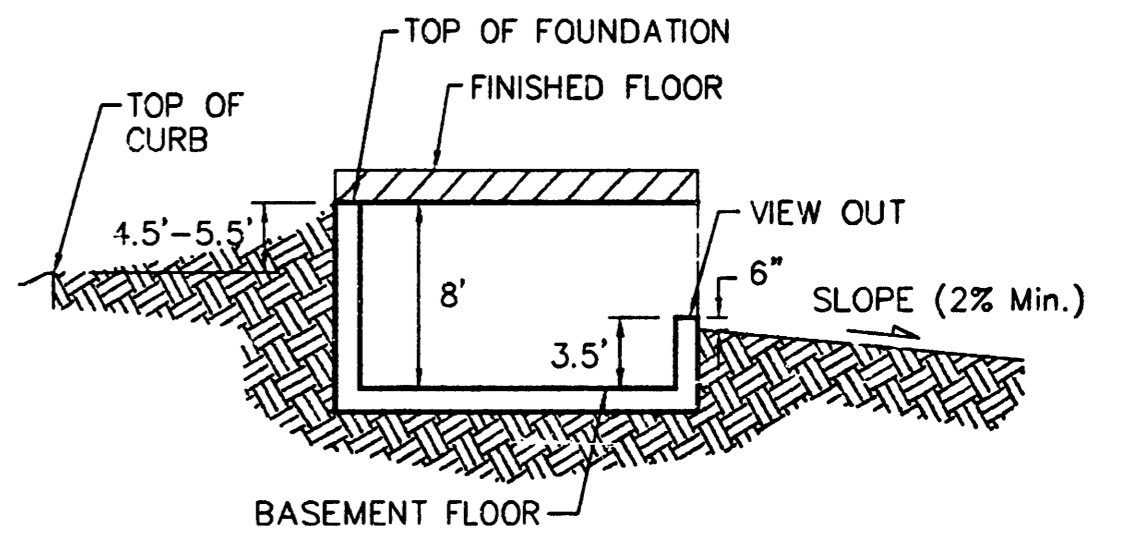
|        |     |       |    |          |     |      |          |       |          |       |   |    |   |
|--------|-----|-------|----|----------|-----|------|----------|-------|----------|-------|---|----|---|
| DESIGN | SCZ | DRAWN | JW | APPROVED | NSW | DATE | 12/26/00 | SCALE | 1" = 60' | SHEET | 2 | OF | 8 |
|--------|-----|-------|----|----------|-----|------|----------|-------|----------|-------|---|----|---|

C:\p01\angfire-grading.dwg



SCALE: 1" = 60'  
 ● = Iron

**BENCHMARK:**  
 Railroad Spike in Power Pole  
 Located 27' South and 402' East  
 of the Northwest Corner of the  
 NE 1/4, Section 24, TWP. 28-S, R-1-W  
 Elevation = 92.98 City Datum  
 City of Wichita Benchmark Disc SE Corner  
 of Intersection of 47th St. S. and West St.  
 42.10' E. of Centerline  
 51.00' S. of Centerline  
 99.80' E. of P.P. on SW Corner  
 23.80' S. of P.P.  
 Elevation = 92.29 City Datum



**TYPICAL VIEW OUT DETAIL**  
 NO SCALE

**NOTES:**  
 Proposed Top of Foundation Elevations Are Shown On  
 Plans. Contractor to Set Finished Floor Elevations.  
 All Street Elevations Shown on Plans are for Top of  
 Curb (Full-Height).  
 This Grading Plan is Designed with View-Outs.  
 Elevations Shown at Rear of House (XX.X V.O.)

| MINIMUM BUILDING PAD ELEVATIONS FOR<br>LOWEST OPENING TO THE STRUCTURES |       |                         |
|---|-------|-------------------------|
| LOT   | BLOCK | ELEVATION<br>CITY DATUM |
| 3-5   | B     | 95.0                    |
| 31-32   | B     | 94.0                    |
| 2-18  | C     | 94.0                    |
| 23-26   | C     | 94.0                    |
| 28-32   | C     | 94.0                    |
| 34-37   | C     | 94.0                    |
| 39-46   | C     | 94.0                    |

**ANGEL FIRE**  
**GRADING PLAN**  
 CITY OF WICHITA, SEDGWICK COUNTY, KANSAS

**BAUGHMAN COMPANY P.A.**  
 ENGINEERING, SURVEYING, & PLANNING  
 316-262-7271 • 312 ELLIS • WICHITA, KANSAS 67211

PROJECT NUMBER: \_\_\_\_\_ SHEET **3** OF **3**

DESIGN: SCJ    DRAWN: JW    APPROVED: NBW    DATE: 12/26/00    SCALE: 1" = 60'

SE. Cor. S.W. 1/4, Sec. 13  
 Twp. 28-S, R-1-W

20' SEWER SYSTEM EASEMENT  
 PER CONDEMNATION CASE C-11028

20' SEWER SYSTEM EASEMENT  
 PER CONDEMNATION CASE C-11028

SE COR. RESERVE "A"  
 JAMES PLACE