

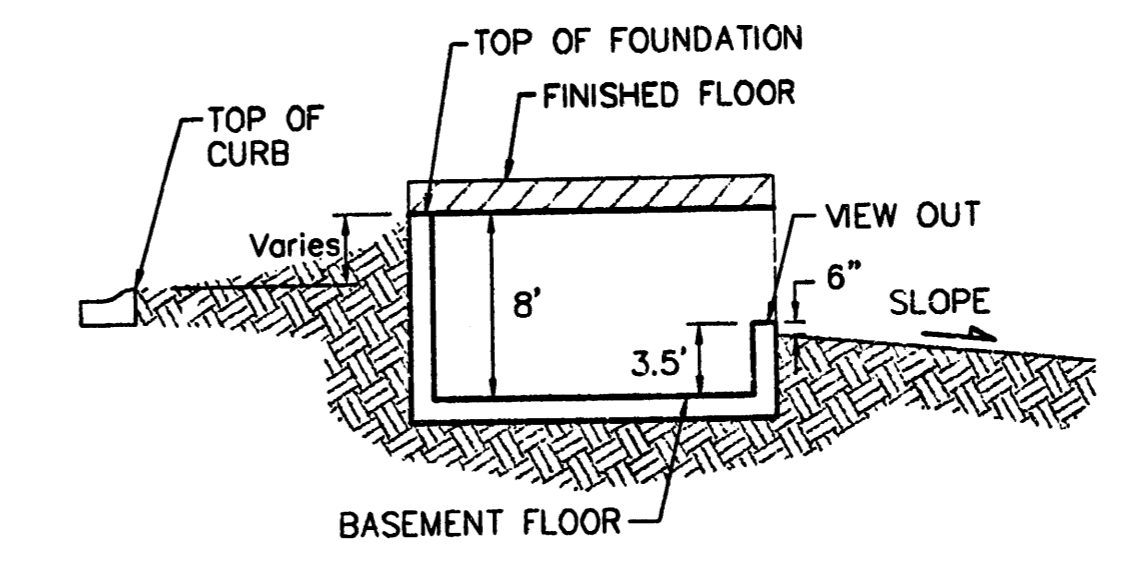
SCALE: 1" = 60'
 • = Iron

NOTES:
 Proposed Top of Foundation Elevations Are Shown On Plans. Contractor to Set Finished Floor Elevations.
 All Street Elevations Shown on Plans are for Top of Curb (Full-Height). Typically Roll-Type Curbs are Constructed. Deduct 0.25' From Top of Curb (Full-Height).
 This Grading Plan is Designed with View-Out Basements. Elevations Shown at Rear of House (XX.X V.O.) Are for Minimum Opening.

MINIMUM BUILDING PAD ELEVATIONS FOR LOWEST OPENING TO THE STRUCTURES		
LOT	BLOCK	ELEVATION CITY DATUM
7,8,9,10,11,14	A	169.5
1-15	C	172.8

BENCH MARKS:
 CITY DISC - 34.3' E. & 3.3' N. OF S.W. CORNER OF N.W. 1/4, SEC. 25, T-27-S, R-2-W
 ELEV. = 156.63 CITY DATUM
 1344.03 M.S.L.
 CITY DISC - 135TH ST. W. & MAPLE, 30' N. & 15' E. @ BOTH
 ELEV. = 150.20 CITY DATUM
 1337.60 M.S.L.

NOTE:
 A MASTER GRADING PLAN FOR DRAINAGE HAS BEEN DEVELOPED FOR THIS SUBDIVISION AND IS ON FILE WITH THE CITY OF WICHITA, KANSAS. ALL DRAINAGE EASEMENTS, RIGHTS-OF-WAY, OR RESERVES SHALL REMAIN AT ESTABLISHED GRADES OR AS MODIFIED WITH THE APPROVAL OF THE CITY ENGINEER OF THE CITY OF WICHITA, KANSAS. NO OBSTRUCTIONS WHICH IMPEDE THE FLOW OF THIS DRAINAGE SYSTEM SHALL BE ALLOWED.



TYPICAL VIEW OUT
 NO SCALE

APPROVED DRAINAGE PLAN

REVISED 1-25-02 BY AEG
 REVISED 11-27-01 BY GNX/NBW

AUBURN HILLS 12TH ADDITION GRADING PLAN
 WICHITA, KANSAS

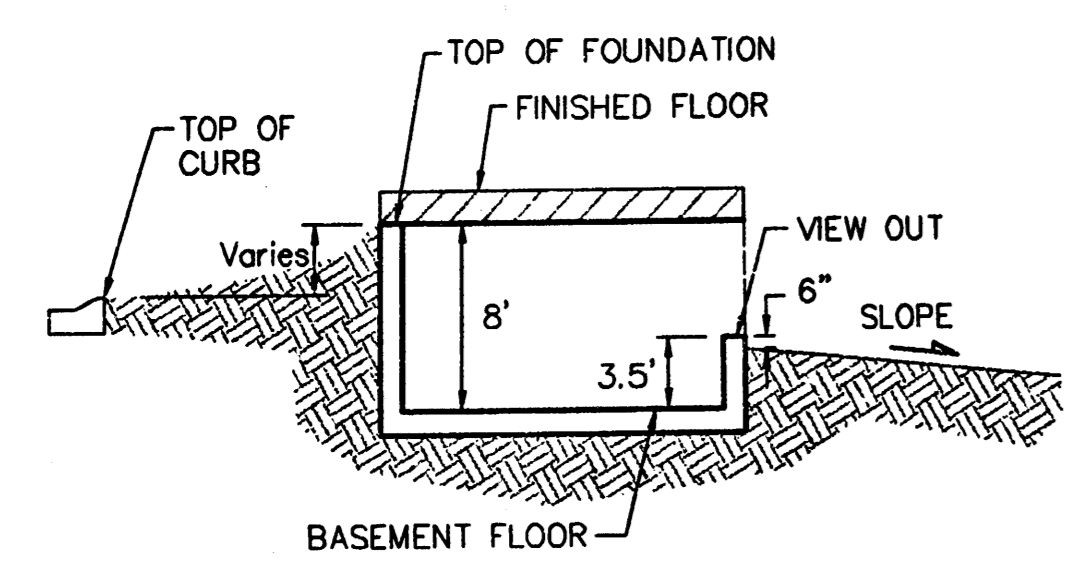
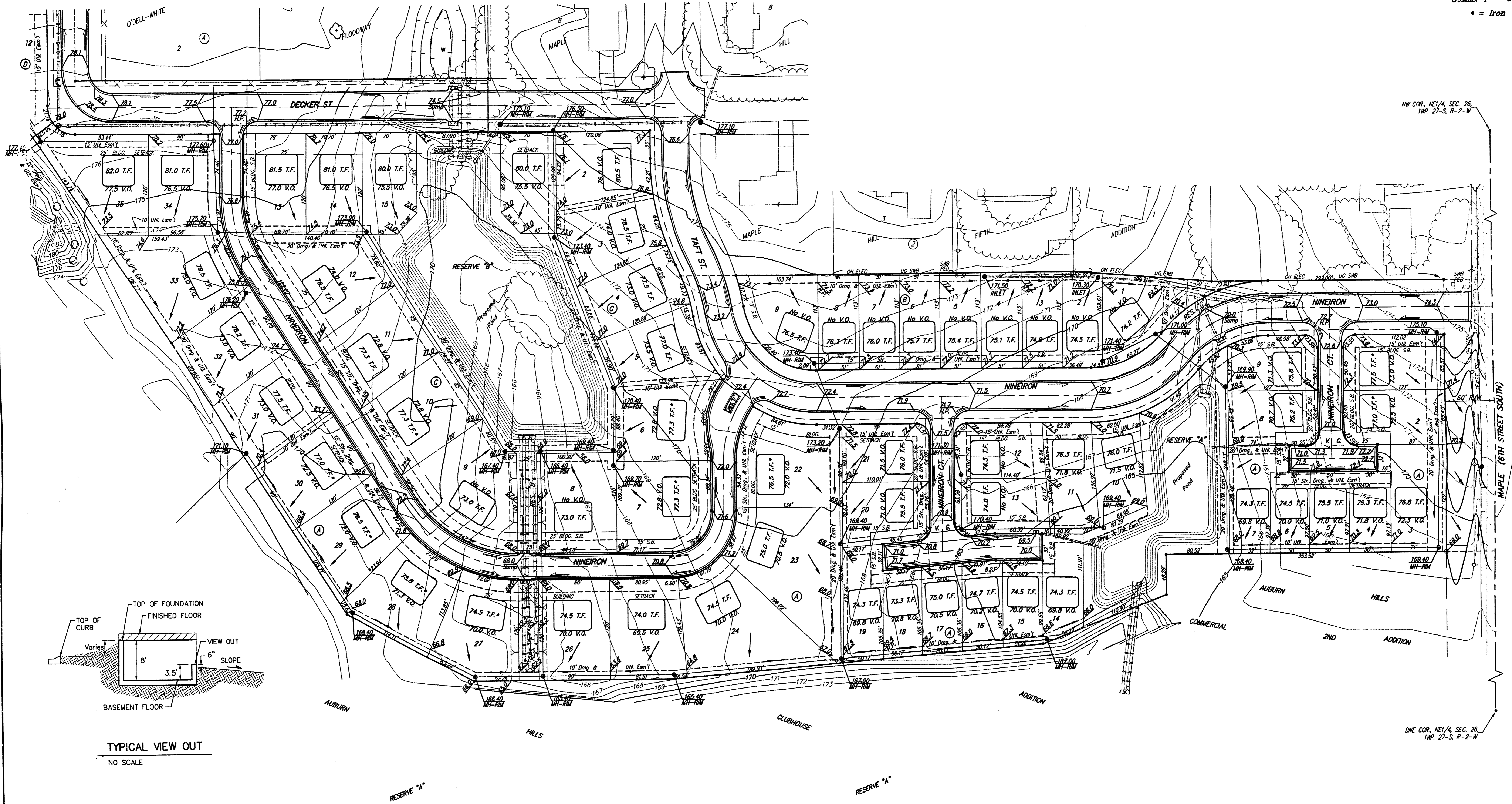
BAUGHMAN COMPANY P.A.
 ENGINEERING, SURVEYING, & PLANNING
 316-262-7222 • 316 ELLIS • WICHITA, KANSAS 67221

PROJECT NUMBER: _____

DESIGN: NBW | DRAWN: JAK | APPROVED: _____ | DATE: 10/24/00 | SCALE: 1" = 60' | SHEET: 1 OF 2

Auburn 12/01

SCALE: 1" = 60'
• = Iron



TYPICAL VIEW OUT
NO SCALE

NOTES:
Proposed Top of Foundation Elevations Are Shown on Plans. Contractor to Set Finished Floor Elevations.
All Street Elevations Shown on Plans are for Top of Curb (Full-Height). Typically Roll-Type Curbs are Constructed. Deduct 0.25' from Top of Curb (Full-Height).
This Grading Plan is Designed with View-Out Basements. Elevations Shown at Rear of House (XX.X V.O.) are for Minimum Opening.
* Requires extra-deep foundation.

MINIMUM BUILDING PAD ELEVATIONS FOR LOWEST OPENING TO THE STRUCTURES		
LOT	BLOCK	ELEVATION CITY DATUM
7,8,9,10,11,14	A	169.5
1-15	C	172.8

BENCH MARKS:
CITY DISC - 34.3' E. & 3.3' N. OF S.W. CORNER OF N.W. 1/4, SEC. 26, T-27-S, R-2-W. ELEV. = 156.63 CITY DATUM, 1344.03 M.S.L.
CITY DISC - 135TH ST. W. & MAPLE, 30' N. & 15' E. OF BOTH. ELEV. = 150.20 CITY DATUM, 1337.60 M.S.L.

NOTE:
A MASTER GRADING PLAN FOR DRAINAGE HAS BEEN DEVELOPED FOR THIS SUBDIVISION AND IS ON FILE WITH THE CITY OF WICHITA, KANSAS. ALL DRAINAGE EASEMENTS, RIGHTS-OF-WAY, OR RESERVES SHALL REMAIN AT ESTABLISHED GRADES OR AS MODIFIED WITH THE APPROVAL OF THE CITY ENGINEER OF THE CITY OF WICHITA, KANSAS. NO OBSTRUCTIONS WHICH IMPEDE THE FLOW OF THIS DRAINAGE SYSTEM SHALL BE ALLOWED.

REVISIONS			
NO.	DATE	DESCRIPTION	DR. BY
1	12/16/00	Rear Yard to 1%	JAK NBW

AUBURN HILLS 12TH ADDITION GRADING PLAN
WICHITA, KANSAS

BAUGHMAN COMPANY P.A.
ENGINEERING, SURVEYING, & PLANNING
316-262-7271 • 315 ELLIS • WICHITA, KANSAS 67211

PROJECT NUMBER: _____

DESIGN: NBW DRAWN: JAK APPROVED: _____ DATE: 10/24/00 SCALE: 1" = 60'

SHEET 2 OF 2