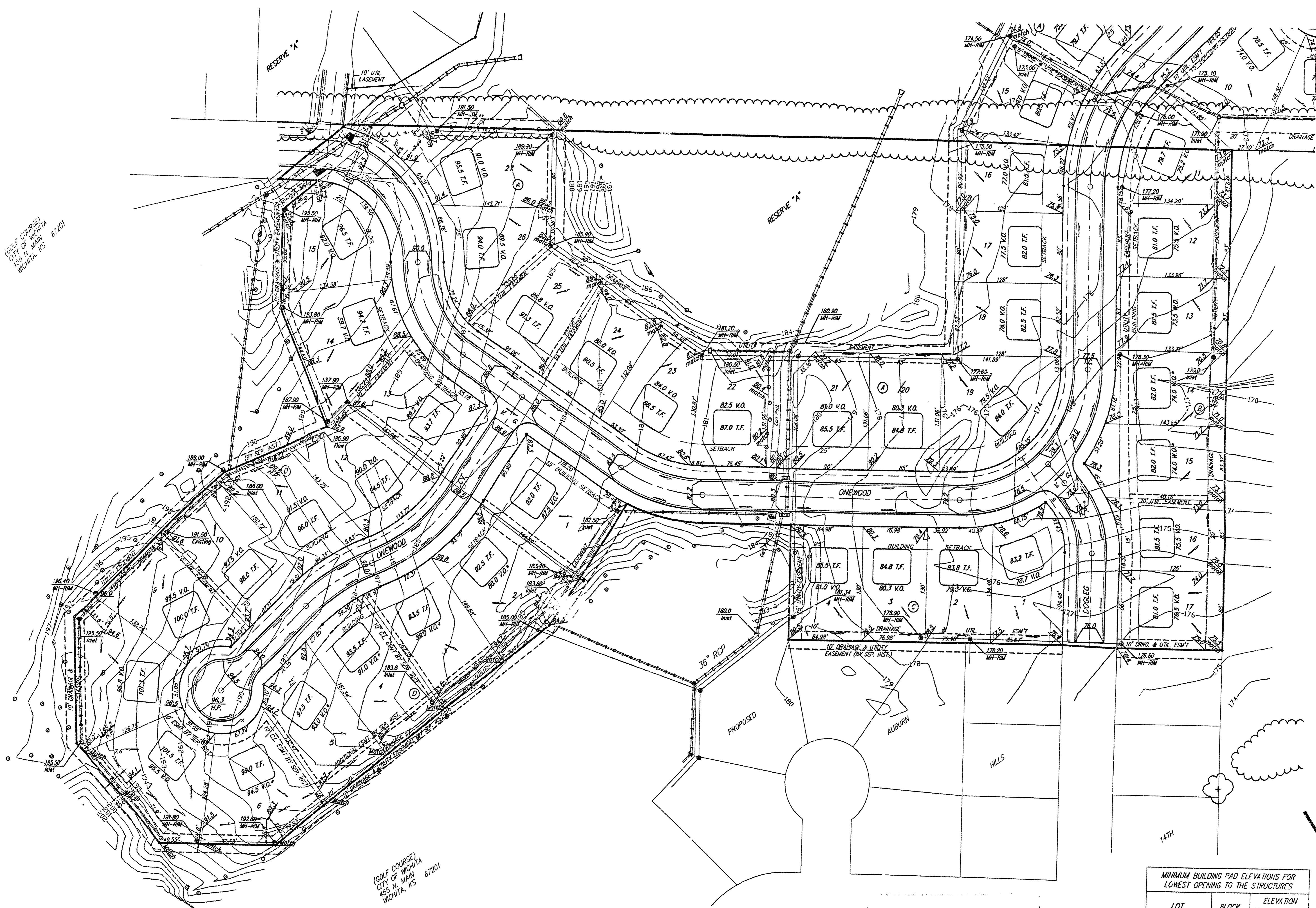


BENCHMARK:  
 CITY DISC- 34.3' E. & 3.3' N. OF S.W. CORNER OF  
 N.W. 1/4, SEC. 25, T-27-S, R-2-W. ELEV.=156.63  
 CITY DATUM(134.03 M.S.L.)

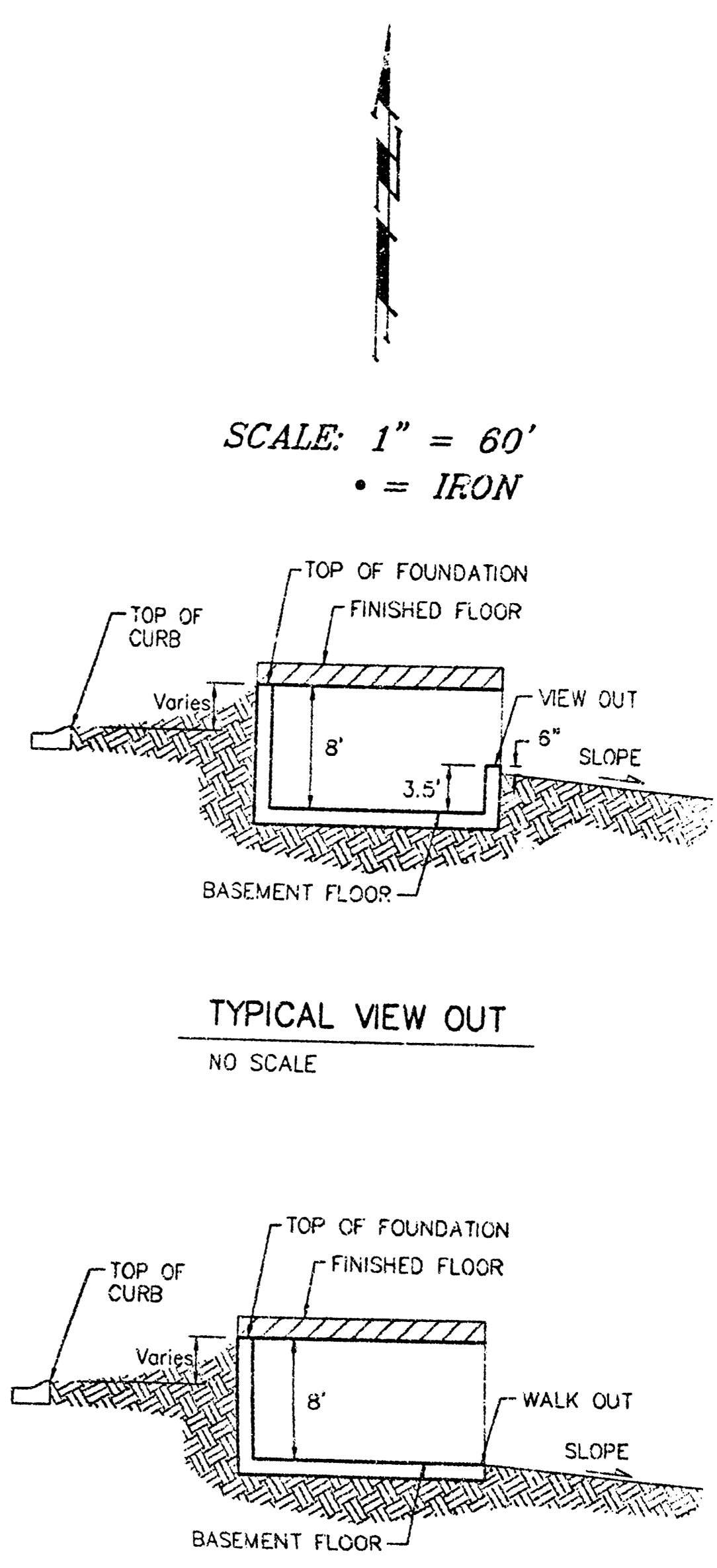
(GOLF COURSE)  
 CITY OF WICHITA  
 405 N. MAIN  
 WICHITA, KS 67201



(GOLF COURSE)  
 CITY OF WICHITA  
 405 N. MAIN  
 WICHITA, KS 67201

**APPROVED  
 DRAINAGE PLAN**

MINIMUM BUILDING PAD ELEVATIONS FOR LOWEST OPENING TO THE STRUCTURES		
LOT	BLOCK	ELEVATION CITY DATUM
1-5	A	165.0
6	A	166.0
7	A	167.0
8-11	A	168.0
12	A	171.0
13	A	173.0
14-16	A	175.0



SCALE: 1" = 60'  
 • = IRON

TYPICAL VIEW OUT  
 NO SCALE

TYPICAL WALK OUT  
 NO SCALE

**NOTES:**  
 A master grading plan for drainage has been developed for the subdivision and is on file with the City of Wichita, Kansas. Construction of residential structures must follow the master site grading plan elevations which are higher than the minimum pad requirement.  
 All drainage easements, rights-of-way, or reserves shall remain at established grades or as modified with the approval of the City Engineer of the City of Wichita, Kansas. No obstructions which impede the flow of this drainage system shall be allowed.  
 Proposed top of foundation elevations are shown on plans. Contractor to set finished floor elevations.  
 All street elevations shown on plans are for top of curb (full-height). Typically roll-type curbs are constructed. Deduct 0.25' from top of curb (h.l.-height).  
 This Grading Plan is designed with View-Out and Walk-Out Basements. Elevations shown at Rear of House (XX.X V.O. and XX.X W.O.) are for minimum opening.  
 All elevations shown on plans are City of Wichita Datum.

\* Requires extra-deep foundation.  
 As-Built 7-15-02 by AEG

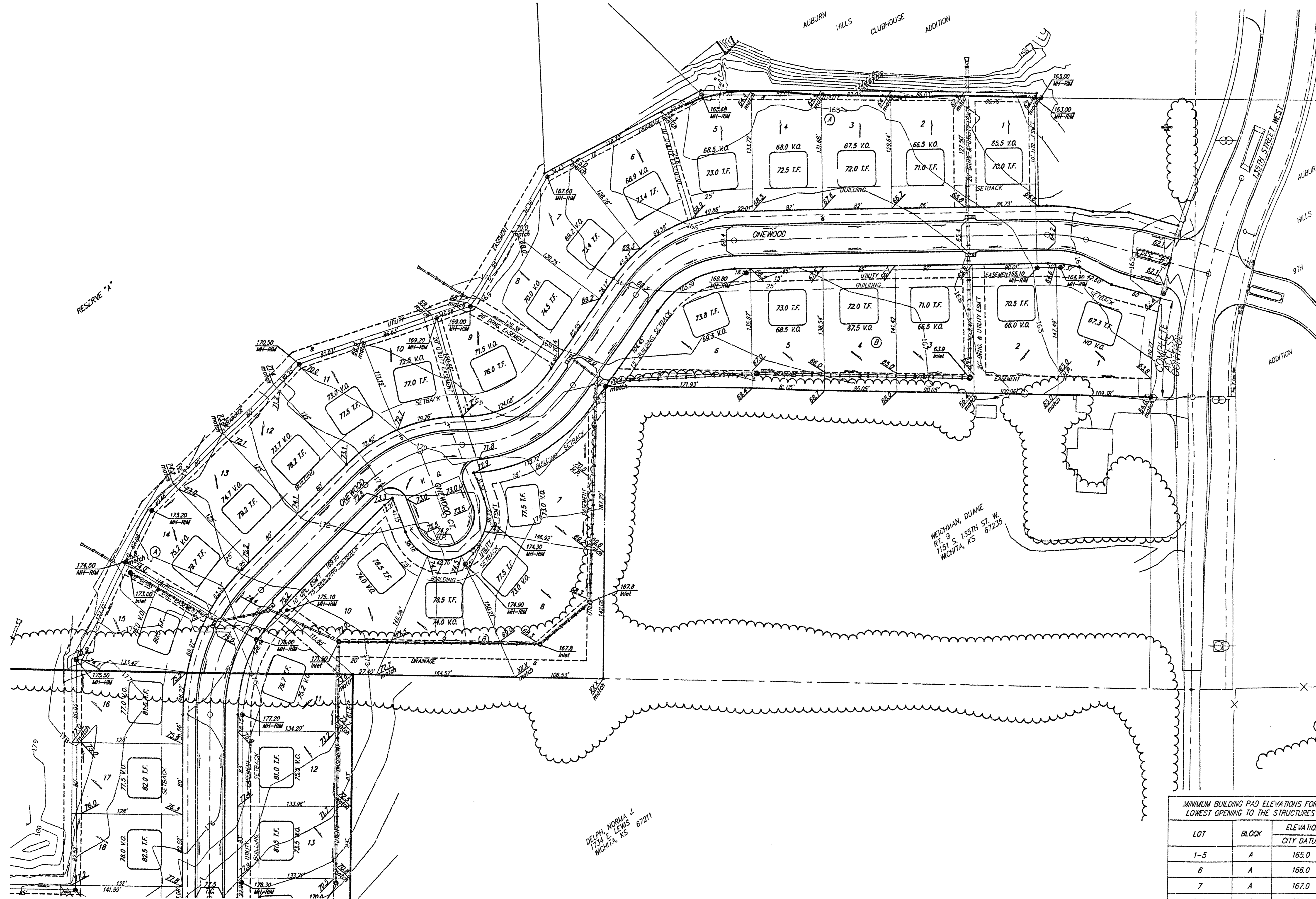
**AUBURN HILLS 13TH ADDITION  
 GRADING PLAN**  
 WICHITA, KANSAS

**BAUGHMAN COMPANY P.A.**  
 ENGINEERING, SURVEYING, & PLANNING  
 316-282-7271 318 E. FULLER WICHITA, KANSAS 67211

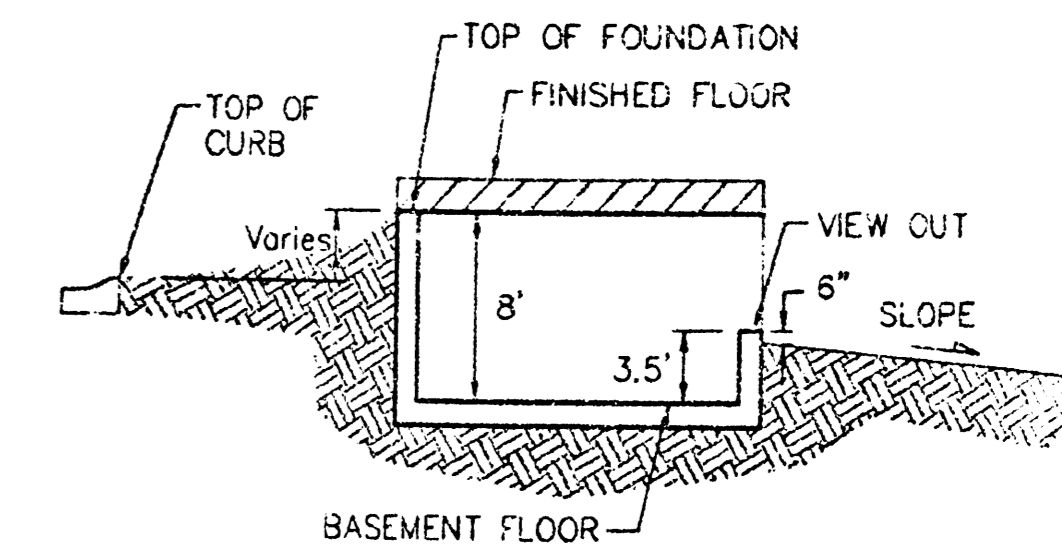
PROJECT NUMBER: \_\_\_\_\_ SHEET: **1** OF **2**

DESIGN: NEW DRAWN: JAK/AEG APPROVED: \_\_\_\_\_ DATE: 11/14/01 SCALE: 1" = 60'

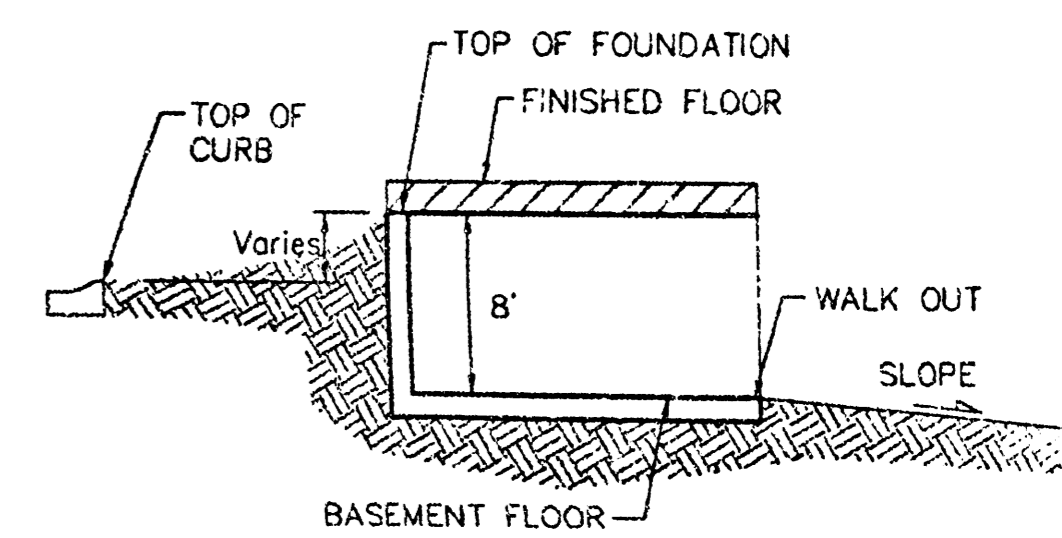
BENCHMARK:  
 CITY DISC- 34.3' E. & 3.3' N. OF S.W. CORNER OF  
 N.W. 1/4, SEC. 23, T-27-S, R-2-W. ELEV.=156.63  
 CITY DATUM(1344.03 M.S.L.)



SCALE: 1" = 60'  
 • = IRON



TYPICAL VIEW OUT  
 NO SCALE



TYPICAL WALK OUT  
 NO SCALE

**NOTES:**

A master grading plan for drainage has been developed for the subdivision and is on file with the City of Wichita, Kansas. Construction of residential structures must follow the master site grading plan elevations which are higher than the minimum pad requirement.

All drainage easements, rights-of-way, or reserves shall remain at established grades or as modified with the approval of the City Engineer of the City of Wichita, Kansas. No obstructions which impede the flow of this drainage system shall be allowed.

Proposed top of foundation elevations are shown on plans. contractor to set finished floor elevations.

All street elevations shown on plans are for top of curb (full-height). Typical roll-type curbs are constructed. Deduct 0.25' from top of curb (full-height).

This Grading Plan is designed with View-Out and Walk-Out Basements. Elevations shown at Rear of House (XX.X V.O. and XX.X W.O.) are for minimum opening.

All elevations shown on plans are City of Wichita Datum.

\* Requires extra-deep foundation.

As-Built 7-15-02 by AEG

**AUBURN HILLS 13TH ADDITION  
 GRADING PLAN  
 WICHITA, KANSAS**

**BAUGHMAN COMPANY P.A.**  
 ENGINEERING, SURVEYING, & PLANNING  
 316-242-7271 • 316 ELLIS • WICHITA, KANSAS 67211

MINIMUM BUILDING PAD ELEVATIONS FOR LOWEST OPENING TO THE STRUCTURES		
LOT	BLOCK	ELEVATION CITY DATUM
1-5	A	165.0
6	A	166.0
7	A	167.0
8-11	A	168.0
12	A	171.0
13	A	173.0
14-16	A	175.0

DESIGN	DRAWN	APPROVED	DATE	SCALE	SHEET
NEW	JAK/AEG		11/14/01	1" = 60'	2

DELOPH NORMAN J.  
 1542 E. LINCOLN  
 WICHITA, KS 67211

Auburn Hills 13th Addition